

DRAWING NUMBER
26-80

DRAWING NUMBER

DRAWING NUMBER

DRAWING NUMBER

PLAT NO. 1 RANCH ESTATES

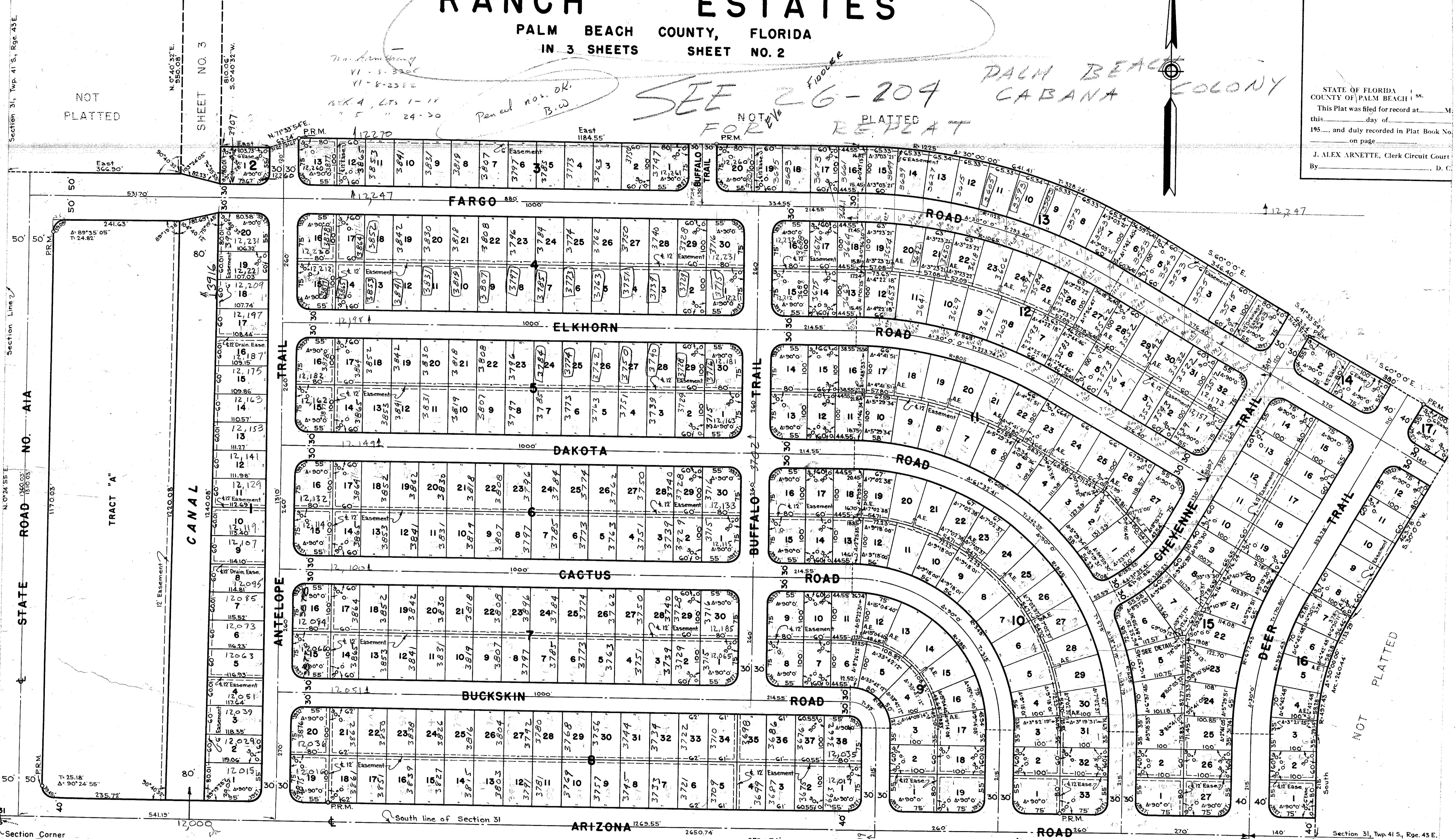
PALM BEACH COUNTY, FLORIDA
IN 3 SHEETS SHEET NO. 2

26-80



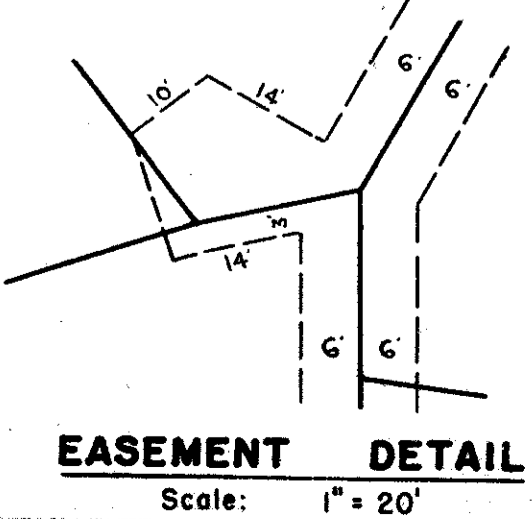
STATE OF FLORIDA
COUNTY OF PALM BEACH
This Plat was filed for record at _____ M.
this _____ day of _____
195____ and duly recorded in Plat Book No. _____
on page _____
J. ALEX ARNETTE, Clerk Circuit Court
By _____ D. C.

SEE 26-209 FOR RE-PLAT
PALM BEACH CABANA COLONY

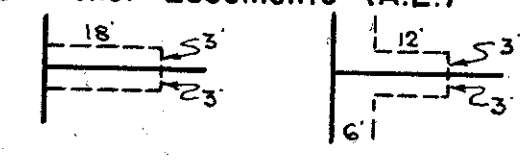


Section 31, Twp. 41 S., Rge. 43 E. NOT PLATTED
Section 31, Twp. 42 S., Rge. 43 E. NOT PLATTED

NOTE
Building Setback Lines shall be as required by Palm Beach County Zoning Regulations.
There shall be no buildings or other structures placed on Utility Easements.
There shall be no buildings or any kind of construction or trees or shrubs placed on Drainage Easements.



NOTE
Block Corners are rounded with a 25ft. radius curve, unless otherwise shown.
Easements are for Public Utilities, unless otherwise noted.
6'x18' Anchor Easements (A.E.)



1000-339

BROCKWAY, WEBER & BROCKWAY
ENGINEERS, INCORPORATED
WEST PALM BEACH, FLORIDA

**PLAT NO. 1
RANCH ESTATES
IN 3 SHEETS SHEET NO. 2**

FIELD: _____ SCALE: _____ Dwg. No. _____
OFFICE: J. J. F. _____
DR. BY: M. G. B. _____ DATE: MARCH 1951

(26-80) **31/41/43**