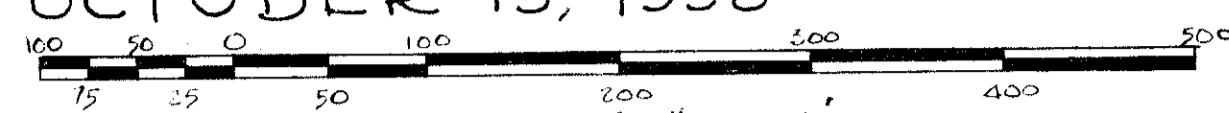


10/15/58

# JUPITER HIGHLANDS

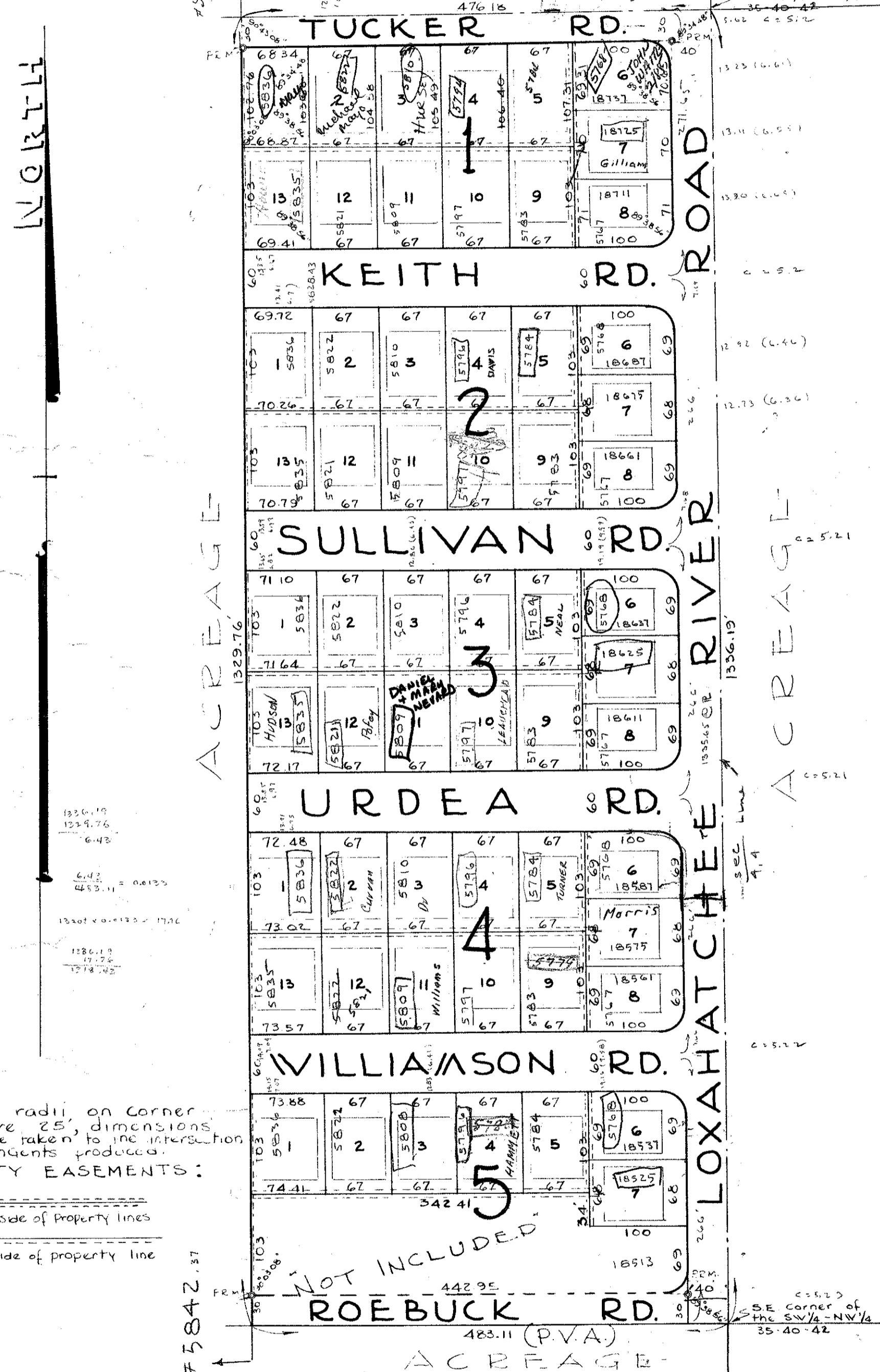
BROWARD ENGINEERS & SURVEYORS  
POMPANO BEACH, FLORIDA  
OCTOBER 15, 1958



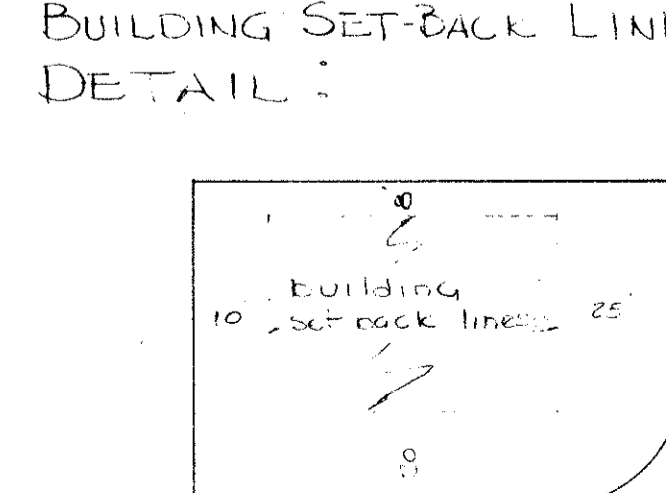
SCALE: 1"=100'

A SUBDIVISION of the S.W. 1/4 of the N.W. 1/4 of SECTION 35,  
TWP. 40 SOUTH, RGE. 42 EAST, PALM BEACH COUNTY, FLORIDA  
LESS AND EXCEPT the WEST 825 feet THEREOF.

STATE OF FLORIDA  
COUNTY OF PALM BEACH  
This Plat was filed for record on 10/15/58  
at 2:15 o'clock PM on October 15  
1958 and duly recorded in Book 184,  
Page 241  
Bertie M. Bilton  
Clerk



Note:  
Corner radii on corner  
lots are 25' dimensions  
are to be taken to the intersection  
of the tangents produced.  
UTILITY EASEMENTS:  
6' either side of property lines  
6' one side of property line



NOTES:  
There shall be no buildings  
on utility easements.  
There shall be no buildings or any  
kind of construction or the  
planting of trees or shrubs on  
drainage easements.  
Building setback lines shall  
be as required by PALM BEACH  
COUNTY Zoning Regulations.

STATE OF FLORIDA S.S.  
COUNTY OF PALM BEACH

Know All Men By These Presents : That T.G. Williamson, Inc., a Florida Corporation, owner of  
The Tract of Land lying and being in Palm Beach County, Florida, Shown hereon as "JUPITER HIGHLANDS",  
And being more particularly described as follows to wit: The Southwest one-quarter (S.W. 1/4) of the  
Northwest one-quarter (N.W. 1/4) of Section 35, Township 40 South, Range 42 East, Palm Beach County,  
Florida, Less and Except the West 825 feet thereof, have Caused the Same to be Surveyed, Subdivided,  
and Platted as shown hereon, and do hereby dedicate to the perpetual use of the public, as public  
Thoroughfares, the Roads, and Easements for utilities as shown hereon, Reserving however unto themselves, their  
heirs, successors, assigns or legal Representatives, the reversion or reversions thereof whenever the Same shall  
be abandoned by the public or discontinued by law.

In witness whereof, T.G. Williamson, Inc., has Caused these Presents to be Signed by its President and attested  
by its Secretary, this 30th day of ~~SEPTEMBER~~ A.D., 1958.  
Signed, Sealed and delivered in the Presence of:

T. G. WILLIAMSON INC.  
*John C. Ryan* (Witness)  
*John W. Meisner* (Witness)  
*J. S. Williamson* (President)  
*John Urdea Jr.* (Secretary)

STATE OF FLORIDA S.S.  
COUNTY OF PALM BEACH

I hereby CERTIFY that on this day personally appeared before me an officer duly Authorized to Administer  
Oaths and take Acknowledgements, T. G. Williamson and John Urdea, Jr., President and Secretary respectively  
of T.G. WILLIAMSON, INC., a Florida Corporation, And the Acknowledged to me the execution of the  
forgoing Instrument for the purposes therein Expressed. Witness My Hand and Official Seal at Jupiter,  
Palm Beach, County, Florida, this 30th day of ~~SEPTEMBER~~ A.D., 1958.

My Commission Expires : ~~SEPTEMBER 30, 1961~~  
*Richard B. Wiggins*  
NOTARY PUBLIC

STATE OF FLORIDA S.S.  
COUNTY OF PALM BEACH

I hereby CERTIFY that the Plat shown hereon is a true and Correct representation of a Survey made under my  
direction of the forgoing described property, And that Said Survey and Plat is accurate to the best of my  
Knowledge and belief and that Permanent Reference Monuments (P.R.M.) have been Set as required by law.

BROWARD ENGINEERS & SURVEYORS

Subscribed and sworn to before me this 30th day  
of ~~SEPTEMBER~~ A.D., 1958.  
MY COMMISSION EXPIRES: July 16, 1961

BY: *Richard B. Wiggins*  
RICHARD B. WIGGINS  
REG. LAND SURVEYOR NO. 682  
STATE OF FLORIDA

*Marion Blue Mueller*  
NOTARY PUBLIC

This plat of "JUPITER HIGHLANDS" is hereby  
approved by AKSEL KRISTENSEN and MARGARET KRISTENSEN  
his wife, holders of a mortgage dated Sept. 16, 1958 and  
recorded in official Records Book No. 240 at page 219 of  
the Public Records of Palm Beach County, Florida.

*J. S. Williamson*  
*John W. Meisner*  
*Aksel Kristensen*  
*Margaret Kristensen*

Approved OCTOBER 20<sup>TH</sup> A.D. 1958  
Board of County Commissioners:  
CHAIRMAN: *Ray C. Mitchell, Jr.*  
COUNTY ENGINEER: *Stephen Smedley*

1000-393

35/40/42

