

DRAWING NUMBER
24-233

SHEET 2

DELRAY SHORES

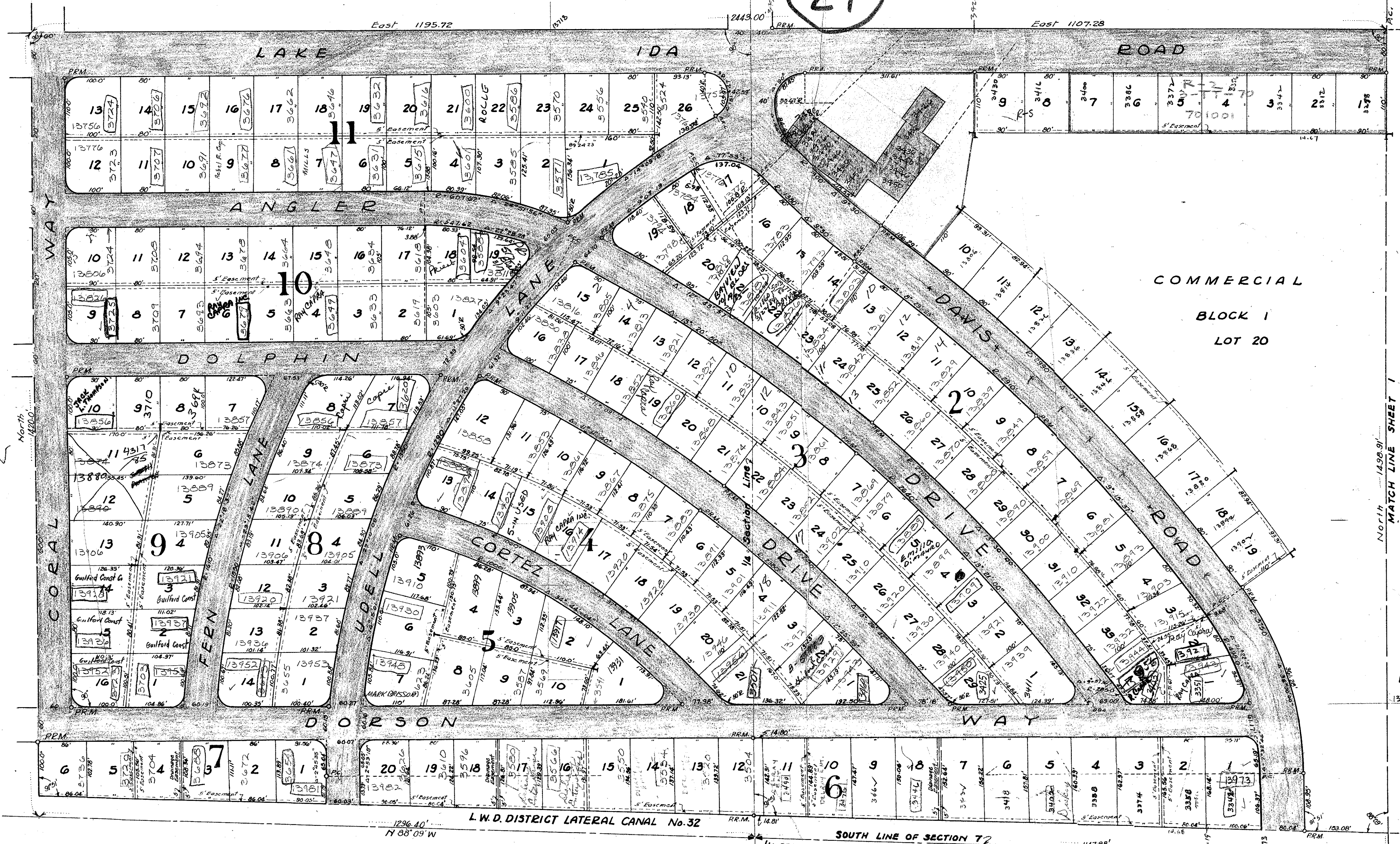
IN SECTION 7 T46S - R43E

PALM BEACH COUNTY FLORIDA

DELRAY SHORES INC. OWNERS AND DEVELOPERS

H.C. FUGATE, REGISTERED SURVEYOR

SCALE 1"=100' (21) MAY 1956.



COMMERCIAL
BLOCK 1
LOT 20

14000.00
13718.70
281.30
1498.91
281.30 = 5.33

- *NOTE***
- 1- All dimensions shown are to the points of intersection of road rights of way unless otherwise noted.
 - 2- Street intersections are rounded with a 25' Radius unless otherwise shown.

1000-460

Fair Share 28 - 300
RS
Group B
FH 100, P 113 most
some B

7/46/43
24-233

DRAWING NUMBER

DRAWING NUMBER

DRAWING NUMBER

PLAN HOLD CORPORATION • IRVINE, CALIFORNIA

PLAN HOLD CORPORATION • IRVINE, CALIFORNIA