

# PLAT NO. 8 OF GOLFVIEW HEIGHTS

IN 2 SHEETS SHEET NO. 2

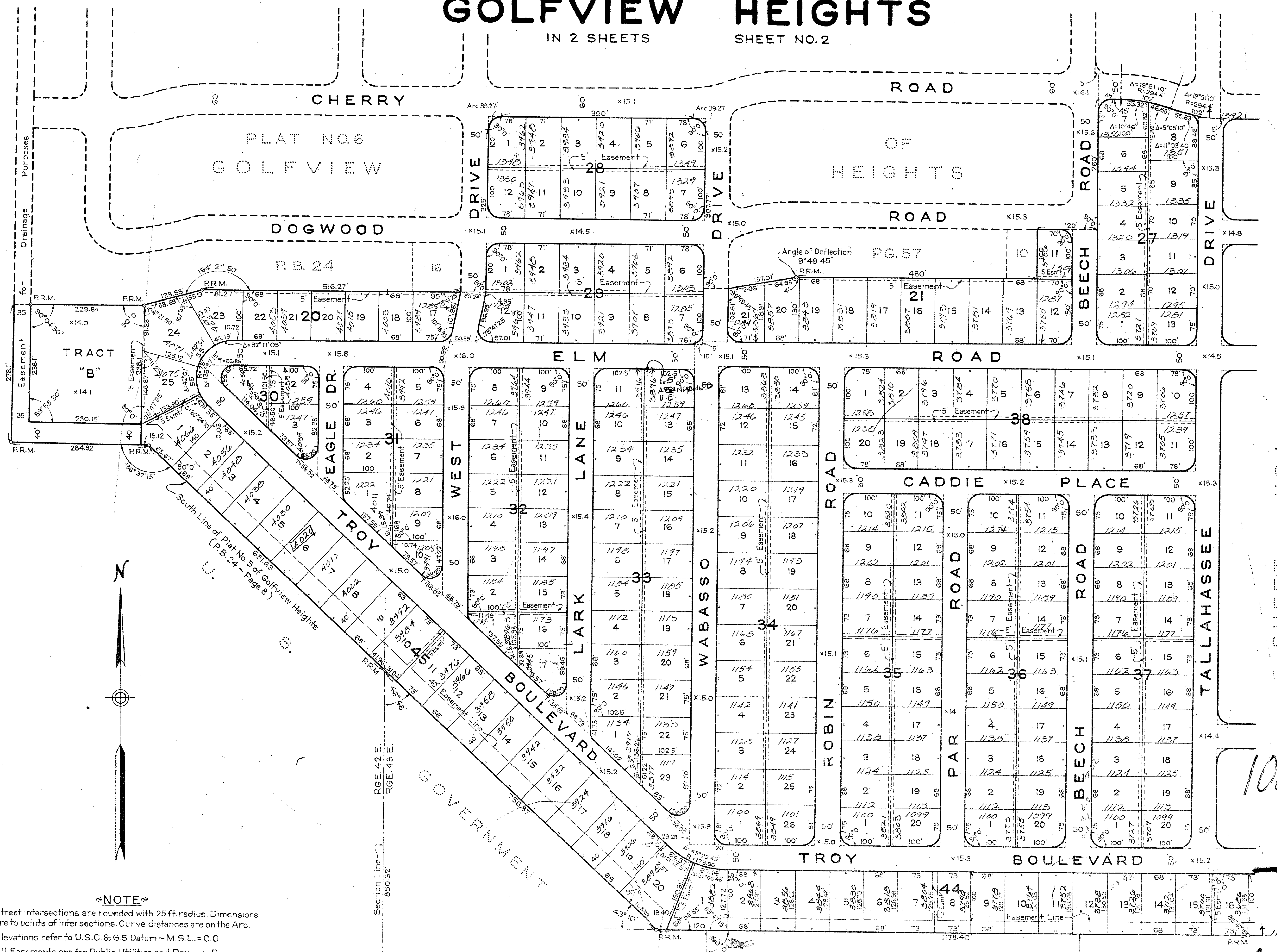
104

DRAWING NUMBER  
**24-104**

DRAWING NUMBER

DRAWING NUMBER

DRAWING NUMBER



STATE OF FLORIDA  
COUNTY OF PALM BEACH  
This Plat was filed for record at \_\_\_\_\_  
this \_\_\_\_\_ day of \_\_\_\_\_  
195\_\_\_\_, and duly recorded in Plat Book No \_\_\_\_\_  
on page \_\_\_\_\_  
J. ALEX ARNETTE, Clerk Circuit Court,  
By \_\_\_\_\_, D. C.

SHEET NO. 1

**NOTE**  
Street intersections are rounded with 25 ft. radius. Dimensions are to points of intersections. Curve distances are on the Arc.  
Elevations refer to U.S.C. & G.S. Datum ~ M.S.L. = 0.0  
All Easements are for Public Utilities and Drainage Purposes.  
Building Set Back Lines shall be 20 feet on the front streets and 15 feet on the side streets.  
Elevations shown thus: X15.2

1000-440  
**24**  
**104**

GEORGE BROCKWAY  
REGISTERED ENGINEER & SURVEYOR  
WEST PALM BEACH, FLORIDA  
PLAT NO. 8 OF GOLFVIEW HEIGHTS  
SHEET NO. 2  
FIELD R.E.N. \_\_\_\_\_  
OFFICE H.L.F. \_\_\_\_\_  
By J. L. F. \_\_\_\_\_  
SCALE 1" = 100'  
Dwg. No. BF-57A  
DATE \_\_\_\_\_

10  
29  
104

Section Line  
5329 Section Corner to Section Corner