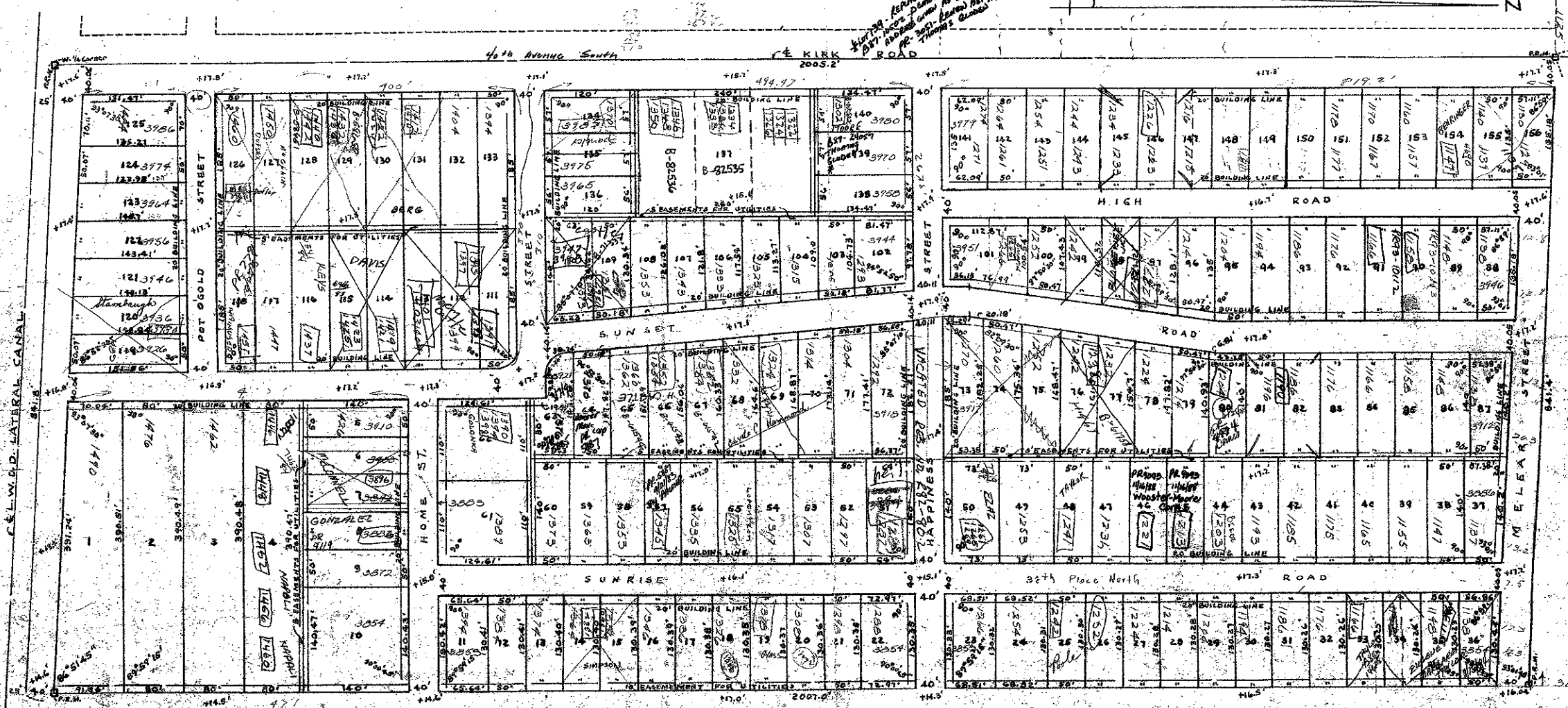


RESTRICTIONS All property shall meet Board of Health requirements for sewerage and water. No building or home shall be left covered with black tar paper for a period longer than six months. All buildings shall be kept painted. No black paint can be used. Minimum setback as shown on plat. Side line setback shall be four feet. The use of lots creating an eye-sore, a nuisance to the community, or a hazard to public health and safety shall not be permitted. The breeding, training or harboring of dogs for commercial purposes shall not be permitted. Also, the rights of ingress and egress over lots, to dig, maintain and clean ditches are reserved. Ditches shall not be filled. Twenty foot setback on streets and roads.

PLAT NO. 6 OF  
**PINE AIR**  
 IN NW 1/4 OF SEC. 7, TWP. 44S. RGE. 43E.  
 PALM BEACH COUNTY, FLA.  
 BEING A REPLAT OF LOT 5, PART OF LOTS 3, 4 & 6, BLOCK 2,  
 SECTION 7, PALM BEACH PLANTATIONS, AS RECORDED IN PLAT BOOK 10,  
 PAGE 20, PUBLIC RECORDS OF PALM BEACH COUNTY, FLORIDA.  
 SCALE 1" = 80'

4  
 STATE OF FLORIDA  
 COUNTY OF PALM BEACH  
 This plat was filed for record on 11:00 AM  
 the 9th day of October 1952  
 and duly recorded in Plat Book No.  
 on page 4  
 J. A. METTE, Clerk Circuit Court  
 Palm Beach, Florida, D. C.



NOTE: Elevations are shown plus (+) or minus (-) and refer to U.S.C.G.S. datum.

STATE OF FLORIDA  
 COUNTY OF PALM BEACH  
 KNOW ALL MEN BY THESE PRESENTS, that TELLIN, INC., a Florida Corporation, owner of the tract of land shown hereon, and more particularly described as follows:  
 All of LOT 5, the South one-half of LOT 4, the West 100 Feet of LOT 6, the West 100 Feet of the South one-half of LOT 3, Block 2, of Section 7, Twp. 44S., Rge. 43E., Palm Beach Plantations, as filed in Plat Book 10 at Page 20, Public Records of Palm Beach County, Florida.  
 has caused the same to be surveyed and platted as shown hereon and does hereby dedicate to the perpetual use of the public as public highways the Roads & Streets as shown hereon, reserving, however, unto itself, its successors, assigns, or legal representatives, the reversion or reversions thereof whenever the same shall be abandoned by the Public or discontinued by law.  
 IN WITNESS WHEREOF, it has caused these presents to be signed by its President and Attested by its Secretary and its Corporate Seal to be affixed hereto by and with the authority of its Board of Directors this 9 day of October, A.D., 1952.  
 ATTEST  
 By: Gladys M. Nalle, Secretary  
 TELLIN, INCORPORATED.  
 By: Frank D. Tellin, President

STATE OF FLORIDA  
 COUNTY OF PALM BEACH  
 I HEREBY CERTIFY that on this day personally appeared before me, an officer duly authorized to administer oaths and take acknowledgments, FRANK D. TELLIN and GLADYS M. NALLE, President and Secretary, respectively, of TELLIN, INCORPORATED, a corporation to me well known and known to me to be the individuals described in, and who executed the foregoing dedication and they acknowledged before me that they executed the same as such officers of said corporation by and with the authority of the Board of Directors of said corporation, and that their act and deed was the act and deed of said corporation.  
 WITNESS my hand and official seal at West Palm Beach, County of Palm Beach and State of Florida, this 9 day of October, A.D., 1952.  
 By: J. C. Roberts, Notary Public

STATE OF FLORIDA  
 COUNTY OF PALM BEACH  
 I HEREBY CERTIFY, that the plat shown hereon is a true and correct representation of a survey made under my direction and it is accurate to the best of my knowledge and belief, and that permanent reference payments (P.R.M.) have been set of required by law.  
 Subscribed and Sworn before me this 9 day of October, A.D., 1952.  
 My Commission Expires: Dec 1952  
 1000-360  
 53  
 7/44/424

DRAWING NUMBER  
**4-24-4**

DRAWING NUMBER

DRAWING NUMBER

8400  
 N.W. Corner  
 Sec. 7, Twp. 44 - Rge. 43

Approved: Oct 9th A.D., 1952  
 Supervisors of L.W. Drainage Dist.  
 By: W. H. ...  
 Manager

Approved: Oct 14th A.D., 1952  
 Board of County Commissioners  
 By: J. ...  
 Chairman