

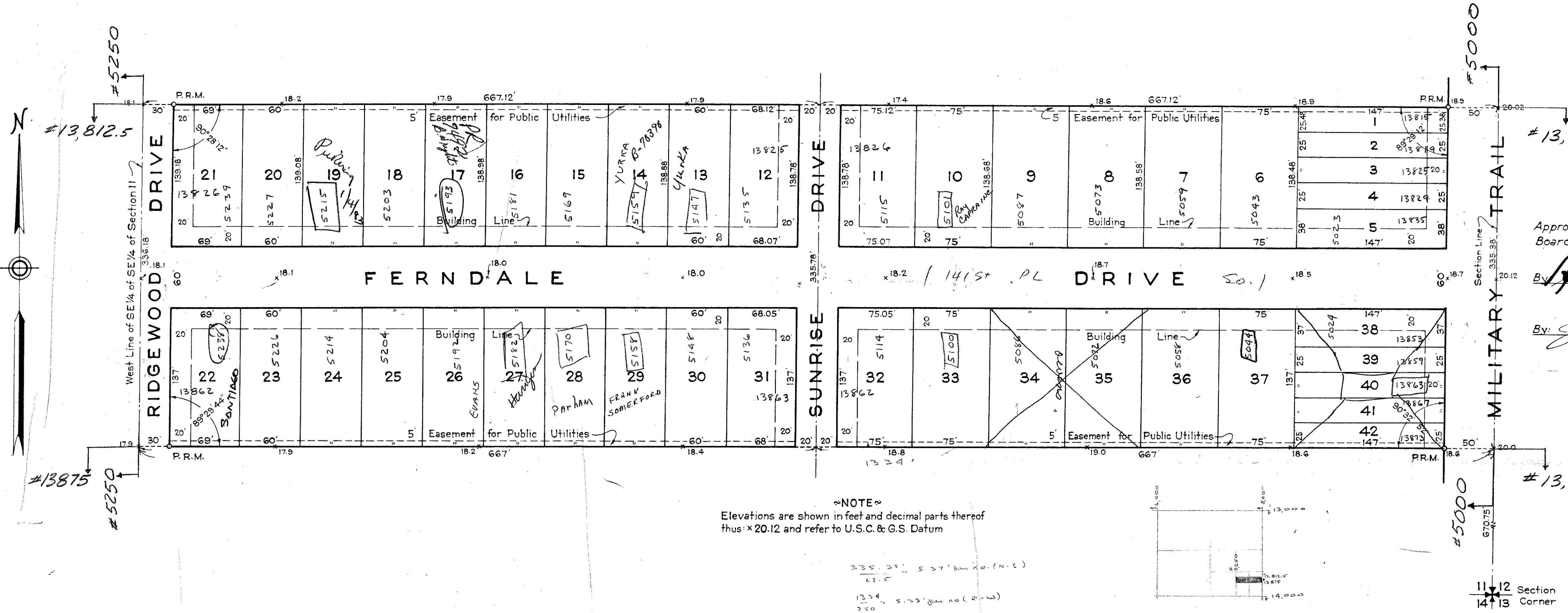
PLAT OF MILITARY RIDGE

IN SE 1/4 OF SEC. 11, TWP. 46 S., RGE. 42 E.
PALM BEACH COUNTY, FLORIDA

STATE OF FLORIDA
COUNTY OF PALM BEACH

This Plat was filed for record at 10:00
this 25th day of September
1952, and duly recorded in Plat Book No.
23 on page 242.

J. ALEX ARNETTE, Clerk, Circuit Court
By *Thaddeus P. Plant*



Approved: *August 25*, A. D. 1952
Board of County Commissioners

By: *Thaddeus P. Plant*
Chairman

By: *James Board*
County Engineer

STATE OF FLORIDA
COUNTY OF PALM BEACH ss

KNOW ALL MEN BY THESE PRESENTS, that TRAIL RIDGE, INC., a Corporation organized and existing under the laws of the State of Florida, the owner of the tract of land lying and being in Palm Beach County, Florida, shown hereon as MILITARY RIDGE, and more particularly described as follows, to wit:

The South Half (S 1/2) of the Northeast Quarter (NE 1/4) of the Southeast Quarter (SE 1/4) of the Southeast Quarter (SE 1/4) and the South Half (S 1/2) of the Northwest Quarter (NW 1/4) of the Southeast Quarter (SE 1/4) of Section 11, Township 46 South, Range 42 East, Palm Beach County, Florida. Less the existing Right of Way of Military Trail.

has caused the same to be surveyed and platted as shown hereon, and does hereby dedicate to the perpetual use of the public, as public highways, the Drives as shown hereon.

IN WITNESS WHEREOF, the said Corporation has caused these presents to be signed by its Vice-President and attested by its Secretary and its corporate seal to be affixed hereto by and with the authority of the Board of Directors of said Corporation this 24th day of July, A. D. 1952.

Attest:

TRAIL RIDGE, INC.

By: *W. R. Whipp*
Secretary

By: *Paul A. ...*
Vice-President

STATE OF FLORIDA
COUNTY OF DADE ss

I HEREBY CERTIFY that on this day personally appeared before me, an officer duly authorized to administer oaths and take acknowledgments, PAUL H. LAUFER and W. L. WHIPP, Vice-President and Secretary, respectively, of TRAIL RIDGE, INC., a Florida Corporation, to me well known and known to me to be the individuals described in and who executed the foregoing dedication, and they acknowledged before me that they executed the same as such officers of said Corporation by and with the authority of the Board of Directors of said Corporation for the purposes therein expressed.

WITNESS my hand and official seal at Miami, County of Dade, and State of Florida, this 24th day of July, A. D. 1952.

Bert R. Broadwell
Notary Public

My Commission expires: *MARCH 31, 1956*

STATE OF FLORIDA
COUNTY OF PALM BEACH ss

I HEREBY CERTIFY that the plat shown hereon is a true and correct representation of a survey, made under my direction, of the foregoing described property, and that said survey is accurate to the best of my knowledge and belief, and that permanent reference monuments (P.R.M.) have been placed as required by law.

H. P. Fitzgerald
Registered Land Surveyor
Florida Certificate No. 152

Subscribed and sworn to before me this 22nd day of August, A. D. 1952.

Judge Yoman
Notary Public

My Commission expires: *March 24, 1955*

23
242

GEORGE S. BROCKWAY
REGISTERED ENGINEER & SURVEYOR
WEST PALM BEACH, FLORIDA

MILITARY RIDGE

| | | |
|------------------|--------------|----------|
| FIELD: J. P. H. | SCALE: = 60' | Dwg. No. |
| OFFICE: H. L. F. | | |
| DR. BY: J. J. F. | | |

1146 1912

DRAWING NUMBER 23-242

DRAWING NUMBER

DRAWING NUMBER

DRAWING NUMBER

DRAWING NUMBER