

PLAT OF DELRAY BEACH SHORES

IN S. E. 1/4 OF SEC. 21, TWP. 46 S, RGE. 43 E.

PALM BEACH COUNTY, FLORIDA

"Little Venice"
A John B. Reid Development

167

STATE OF FLORIDA
COUNTY OF PALM BEACH
This Plat was filed for record on the 23rd day of August, 1951, and duly recorded in Plat Book 23 on page 167
L. ALLEN ARNETTE, Clerk Circuit Court
By: M. Blackwood, D.

STATE OF FLORIDA
COUNTY OF PALM BEACH ss

KNOW ALL MEN BY THESE PRESENTS, that DIER, INC., a Corporation organized and existing under the laws of the State of Florida, the owner in fee simple of the tract of land lying and being in Palm Beach County, Florida, shown hereon and more particularly described as follows, to wit:

The South 1310 feet of the North 4780 feet, lying between the right of way of State Road No A1A and the right of way of the Intracoastal Waterway, Section 21, Township 46 South, Range 43 East, Palm Beach County, Florida.

has caused the same to be surveyed and platted as shown hereon and does hereby dedicate to the perpetual use of the public, as public highways, the streets as shown on the attached plat, and the Yacht Basins shown hereon are dedicated and restricted to the use of the owners of property in this subdivision.

IN WITNESS WHEREOF, it has caused these presents to be signed by its President and attested by its Secretary and its corporate seal to be affixed hereto by and with the authority of its Board of Directors this 22nd day of August, A. D. 1951.

Attest:
By: George P. Doyle Secretary
By: John B. Reid President
DIER, INC.

STATE OF FLORIDA
COUNTY OF DADE ss

I HEREBY CERTIFY that on this day personally appeared before me, an officer duly authorized to administer oaths and take acknowledgments, JOHN B. REID and GEORGE R. DOYLE, President and Secretary, respectively, of DIER, INC., a Corporation, to me well known and known to me to be the individuals described in, and who executed the foregoing dedication, and they acknowledged before me that they executed the same as such officers of said Corporation, by and with the authority of the Board of Directors of said Corporation for the purposes therein expressed, and that their act and deed was the act and deed of said Corporation.

WITNESS my hand and official seal of Miami Beach, County of Dade, and State of Florida, this 22nd day of August, A. D. 1951.

Dolph C. Gubel
Notary Public

My Commission expires: May 9th 1955

STATE OF FLORIDA
COUNTY OF PALM BEACH ss

I HEREBY CERTIFY that the plat shown hereon is a true and correct representation of a survey, made under my direction, of the above described property, and that said survey is accurate to the best of my knowledge and belief, and that permanent reference monuments (P.R.M.) have been placed as required by law.

H. L. Fitzgerald
Registered Land Surveyor
Florida Certificate No. 152

Subscribed and sworn to before me this 23rd day of August, A. D. 1951.

Walter H. Percy
Notary Public

My Commission expires: December 16, 1953

1000-515
23
167

Approved: Aug. 27, A. D. 1951
Board of County Commissioners

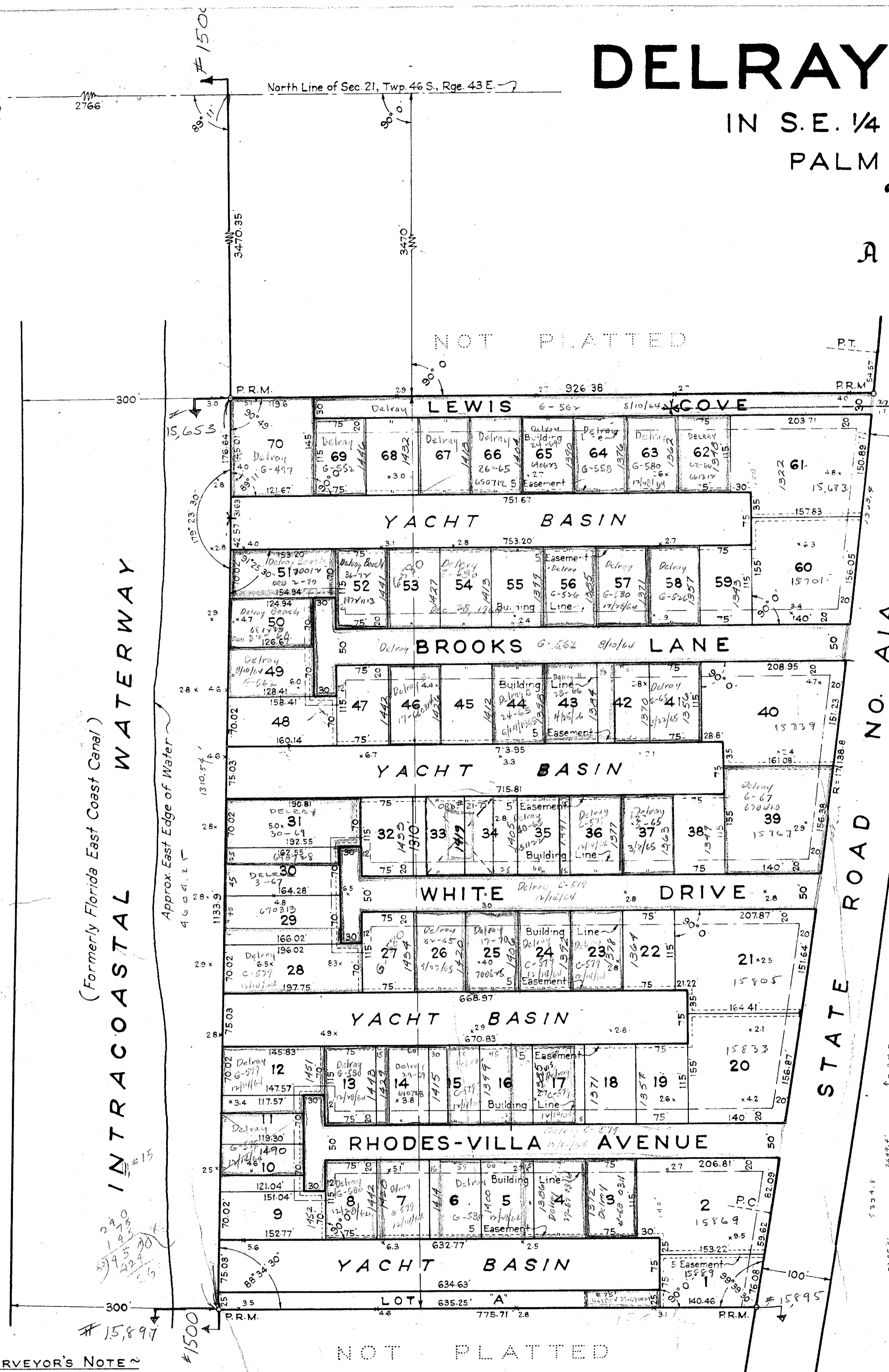
By: Paul Ford
Chairman

By: John B. Reid
County Engineer

GEORGE S. BROCKWAY
REGISTERED ENGINEER & SURVEYOR
WEST PALM BEACH, FLORIDA

DELRAY BEACH SHORES
PALM BEACH COUNTY, FLA.

FIELD: R.E.N. OFFICE: H.L.F. DR BY: J.J.E. BK: M-24
SCALE: 1" = 100' Dwg. No. 21/46/43



SURVEYOR'S NOTE

This plat embraces the south 70.12 feet of Lot 11, all of Lots 12, 13 and 14, and the north 154.28 feet of Lot 15 of "Amended Plat of that Part of Government Lots 2 and 3, Sec. 21, Government Lots 2 and 3, Sec. 28, lying East of the Florida East Coast Canal, all in T. 46 S., R. 43 E.", according to plat on file in the office of the Clerk of the Circuit Court in and for Palm Beach County, Florida, in Plat Book 2 at page 72, and that part of Government Lot 4 of said Section 21, which lies East of the aforementioned Lots and parts of Lots and lies West of the right of way of State Road No. A1A, and that part of the land acquired from the State of Florida, which lies between Government Lots 3 and 4 of said Section 21 and within the North and South limits as heretofore defined. The North and South dimensions of the lots in the Subdivision above referred to, have been determined by proportionate measurements.

NOTE
Elevations are shown thus: x 4.6 and refer to U.S.E.D. Datum. B.M. - 1/2" Iron Pipe & State Road No. A1A, 2 feet south of south property line. Elevation = 8.38

DRAWING NUMBER
23-167

DRAWING NUMBER

DRAWING NUMBER

DRAWING NUMBER