

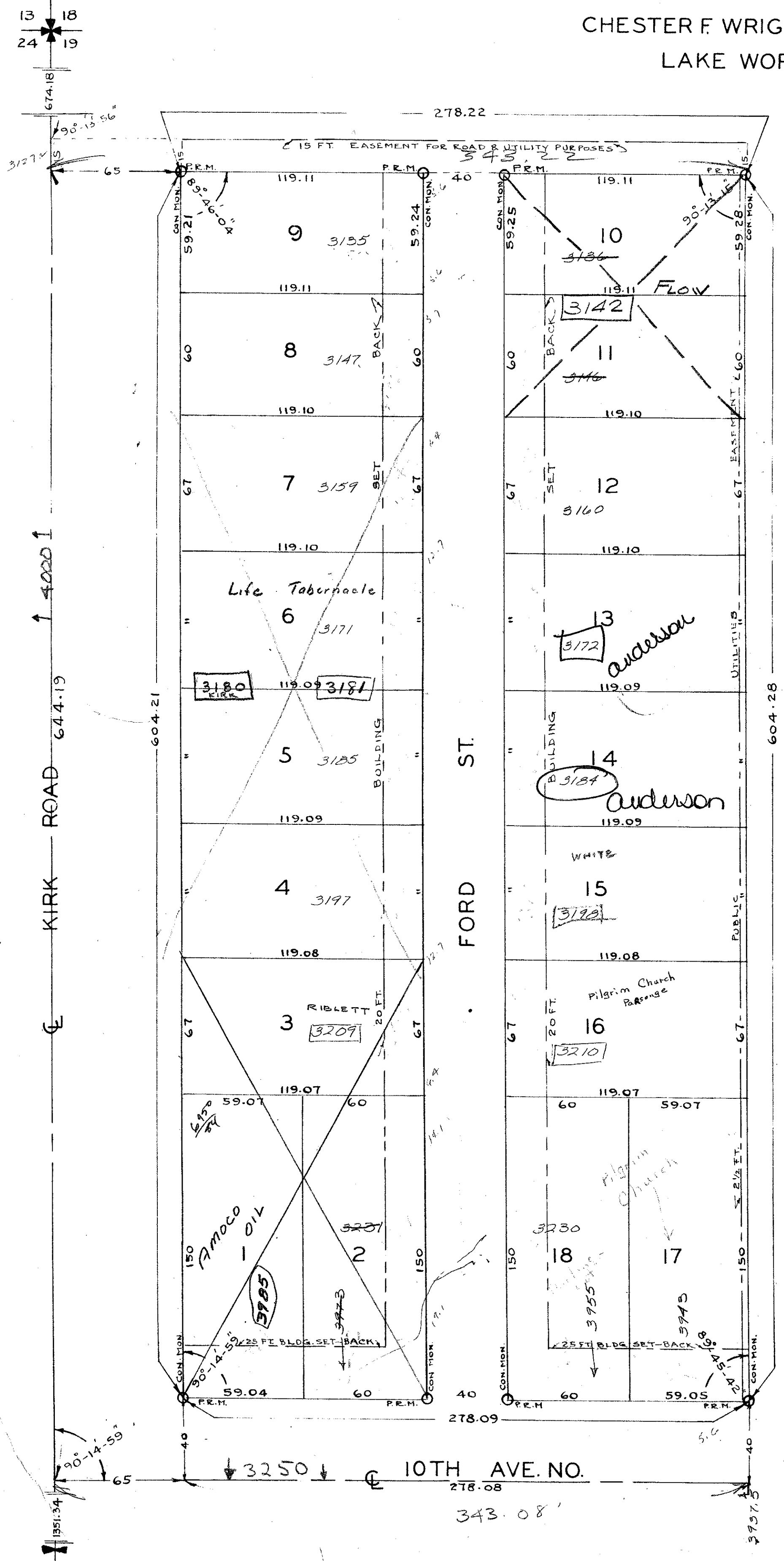
PINE DIVISION

146

A RESUBDIVISION OF THE SOUTH HALF (1/2) OF TRACT SIXTEEN (16) OF FRANK H. SWAN SUBDIVISION OF SECTION NINETEEN (19), TOWNSHIP FORTY-FOUR (44) SOUTH, RANGE FORTY-THREE (43) EAST, AS RECORDED IN PLAT BOOK SIX (6), PAGE SIXTY-SIX (66), RECORDS OF PALM BEACH COUNTY, FLORIDA.

CHESTER F. WRIGHT — ENGINEER & LAND SURVEYOR
LAKE WORTH FLORIDA

STATE OF FLORIDA
COUNTY OF PALM BEACH
This Plat was filed for record on 18 day of June 1951, and duly recorded in Plat Book No. 23 on page 146.
J. ALEX ARNETTE, Clerk Circuit Court
By Marjorie B. Reese, D.



DEDICATION

STATE OF FLORIDA S. S.
COUNTY OF PALM BEACH

KNOW ALL MEN BY THESE PRESENTS: THAT MARY REDMAN, A SINGLE WOMAN, OWNER IN FEE SIMPLE OF THE TRACT OF LAND LYING AND BEING IN PALM BEACH COUNTY, FLORIDA, SHOWN HEREON AS "PINE DIVISION," AND MORE PARTICULARLY DESCRIBED AS FOLLOWS, TO WIT; A RESUBDIVISION OF THE SOUTH HALF (1/2) OF TRACT SIXTEEN (16) OF THE FRANK H. SWAN SUBDIVISION OF SECTION NINETEEN (19) TOWNSHIP FORTY-FOUR (44) SOUTH, RANGE FORTY-THREE (43) EAST, PALM BEACH COUNTY, FLORIDA, RECORDED IN PLAT BOOK SIX (6), PAGE SIXTY-SIX (66) IN THE OFFICE OF THE CLERK OF THE CIRCUIT COURT IN AND FOR PALM BEACH COUNTY, FLORIDA, HAS CAUSED THE SAME TO BE SURVEYED AND PLATTED AS SHOWN HEREON, AND DOES DEDICATE TO THE PERPETUAL USE OF THE PUBLIC THE ROADS AND STREETS SHOWN ON THIS PLAT, RESERVING HOWEVER, UNTO HERSELF, HER HEIRS, ASSIGNS AND LEGAL REPRESENTATIVES, THE REVERSION OR REVERSIONS OF SUCH, WHENEVER ABANDONED OR DISCONTINUED BY LAW.

IN WITNESS WHEREOF: I HAVE HEREUNTO SET MY HAND AND SEAL, THIS 28th DAY OF APRIL, A.D. 1951

Mary Redman (SEAL) J. Malone (WITNESS)
May 2. Nicholls (WITNESS)

ACKNOWLEDGEMENT

STATE OF FLORIDA S.S.
COUNTY OF PALM BEACH

I HEREBY CERTIFY: THAT MARY REDMAN, A SINGLE WOMAN, ON THIS DAY PERSONALLY APPEARED BEFORE ME — AN OFFICER DULY AUTHORIZED TO ADMINISTER OATHS AND TAKE ACKNOWLEDGMENTS — TO ME, WELL KNOWN TO BE THE INDIVIDUAL DESCRIBED IN, AND WHO EXECUTED THE FOREGOING DEDICATION, AND SHE ACKNOWLEDGED BEFORE ME THAT SHE EXECUTED THE SAME FREELY AND VOLUNTARILY, WITHOUT ANY COMPELSION, CONSTRAINT, APPREHENSION OR FEAR, FOR THE PURPOSE THEREIN EXPRESSED.

WITNESS: MY HAND AND OFFICIAL SEAL, THIS 28th DAY OF APRIL, A.D. 1951

MY COMMISSION EXPIRES Nov. 25, 1953. May 2. Nicholls NOTARY PUBLIC

CERTIFICATION

STATE OF FLORIDA S.S.
COUNTY OF PALM BEACH

I HEREBY CERTIFY: THAT THE TRACT OF LAND SHOWN HEREON AS "PINE DIVISION" WAS SURVEYED AND PLATTED UNDER MY DIRECTION, AND THAT SAID PLAT IS A TRUE AND CORRECT REPRESENTATION THEREOF TO THE BEST OF MY KNOWLEDGE AND BELIEF, AND THAT PERMANENT REFERENCE MONUMENTS (P.R.M.) HAVE BEEN SET AS REQUIRED BY LAW.

SWORN AND SUBSCRIBED TO BEFORE ME, THIS 27th DAY OF APRIL, A.D. 1951

MY COMMISSION EXPIRES Nov. 25, 1953. May 2. Nicholls NOTARY PUBLIC

APPROVED
BOARD OF COUNTY COMMISSIONERS — BY

Paul F. Wright
REGISTERED ENGINEER & LAND SURVEYOR
FLORIDA CERTIFICATES 472-165
Paul Rardin Chairman
Jim Boyd County Engineer

1000-509
(23-146)
19/44/4

DRAWING NUMBER
23-146

DRAWING NUMBER
PLAN HOLD CORPORATION • PALM BEACH, CALIFORNIA
REGISTERED NUMBER 1004

DRAWING NUMBER
PLAN HOLD CORPORATION • PALM BEACH, CALIFORNIA
REGISTERED NUMBER 1004

DRAWING NUMBER
PLAN HOLD CORPORATION • PALM BEACH, CALIFORNIA
REGISTERED NUMBER 1004