

PART OF
RE-PLAT OF BLOCK 10
 OF
MEADOW PARK

AS IN
 PLAT BOOK 22, PAGE 7
 PALM BEACH COUNTY, FLORIDA

SCALE: 1" = 50' APRIL, 1951

140

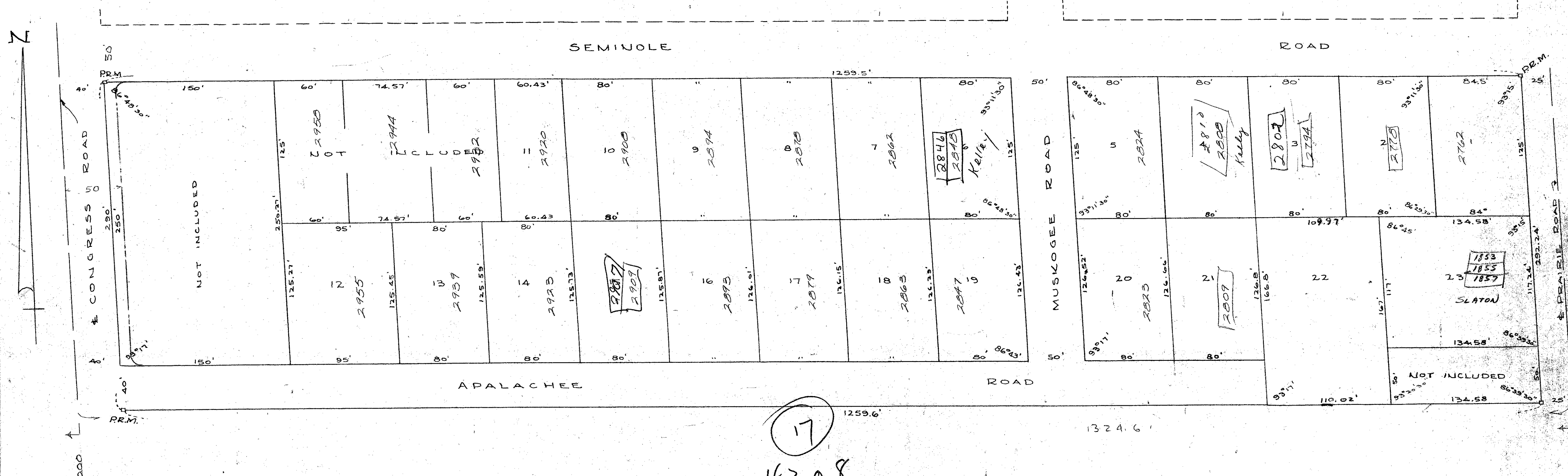
STATE OF FLORIDA
 COUNTY OF PALM BEACH
 This Plat was filed for record at 1:25
 this 2 day of MAY
 1951 and duly recorded in Plat Book No.
 22 on page 193
 J. ALBERT RITTE, Clerk of Court
 By: *Thompson & Reed*, D.

DRAWING NUMBER
23-143

DRAWING NUMBER
 PLAN HOLD CORPORATION - IRVINE, CALIFORNIA
 PREPARED BY N. W. BERTHOLD
 REGISTERED LAND SURVEYOR

DRAWING NUMBER
 PLAN HOLD CORPORATION - IRVINE, CALIFORNIA
 PREPARED BY N. W. BERTHOLD
 REGISTERED LAND SURVEYOR

DRAWING NUMBER
 PLAN HOLD CORPORATION - IRVINE, CALIFORNIA
 PREPARED BY N. W. BERTHOLD
 REGISTERED LAND SURVEYOR



17
 4308

STATE OF FLORIDA
 COUNTY OF PALM BEACH
 Know all men by these presents,
 that COUNTRY HOMES, INCORPORATED, a
 corporation organized and existing under the laws
 of the STATE OF FLORIDA, the owner in fee simple
 of the tract of land lying and being in Palm Beach
 County, Florida, shown on the attached plat and more par-
 ticularly described as follows, to wit:

The replat of Block 10, Meadow Park,
 as in plat Book 22, page 7, Public Records of Palm Beach
 County, Florida, except Lots 1 to 6 inc., N. 125' of Lot 7,
 W. 60' of N. 125'
 of Lot 8, S. 50' of Lot 15,
 has caused the same to be surveyed and
 platted as shown on the attached plat and does here-
 by dedicate to the perpetual use of the public as public
 highways, the roads as shown thereon, reserving however, unto
 itself, its successors, assigns or legal representatives the
 reversion or reversions thereof whenever the same shall
 be abandoned by the public or discontinued by law.

IN WITNESS WHEREOF, it has caused
 these presents to be signed by its President, at-
 tested by its Secretary, and its corporate Seal
 to be affixed hereto by and with the authority
 of its Board of Directors this 1st day of
 May A.D., 1951.

Attest
 By *Wilbur J. Divine* Secretary
 By *Kenyon Riddle* President



STATE OF FLORIDA
 COUNTY OF PALM BEACH
 I HEREBY CERTIFY that on this day
 personally appeared before me, an officer duly
 authorized to administer oaths and take acknowledg-
 ments, KENYON RIDDLE and WILBUR F. DIVINE, pres-
 ident and Secretary respectively of COUNTRY HOMES,
 inc., a Florida Corporation, to me well known and
 known to me to be the individuals described in and
 who executed the foregoing dedication, and they
 acknowledged before me that they executed the same
 as such officers of said Corporation by and with the
 authority of the Board of Directors of said Cor-
 poration for the purposes therein expressed, and
 that their act and deed was the act and deed of
 said Corporation.

WITNESS my hand and official Seal at
 West Palm Beach, County of Palm Beach and
 State of Florida, this 1st day of May
 A.D., 1951.

Romey L. Dinkler
 Notary Public

My Commission expires:
 March 11, 1954

Approved: *S-1*, A.D., 1951
 Board of Supervisors of Lake Worth
 Drainage District.
 By: *W. J. Thomson*
 General Manager

Approved: *May*, A.D., 1951
 Board of County Commissioners
 By: *J. M. Boyd*
 County Engineer

STATE OF FLORIDA
 COUNTY OF PALM BEACH
 I HEREBY CERTIFY that the plat shown hereon is a true and
 correct representation of a survey made under my direction of the foregoing
 described property and that said survey is accurate to the best of my know-
 ledge and belief, and that permanent reference monuments (P.R.M.) have been
 placed as required by law.

1000-502
Augusta Co. Way to wit
 Registered Land Surveyor
 Florida Certificate No. 187.

Subscribed and Sworn to before me this 1st day of MAY, A.D., 1951

(23-143)
 My Commission expires: October 22nd 1952
 8/44/43