

DRAWING NUMBER 21/11

DRAWING NUMBER

DRAWING NUMBER

DRAWING NUMBER

LILLY'S SUBDIVISION

THE N.W. 1/4 OF N.W. 1/4 OF S.W. 1/4 OF SEC. 36, TWP. 43 S., RGE. 42 E.
(LESS THE SOUTH 180')
PALM BEACH COUNTY, FLORIDA

SCALE: 1" = 30' MAY 1946.

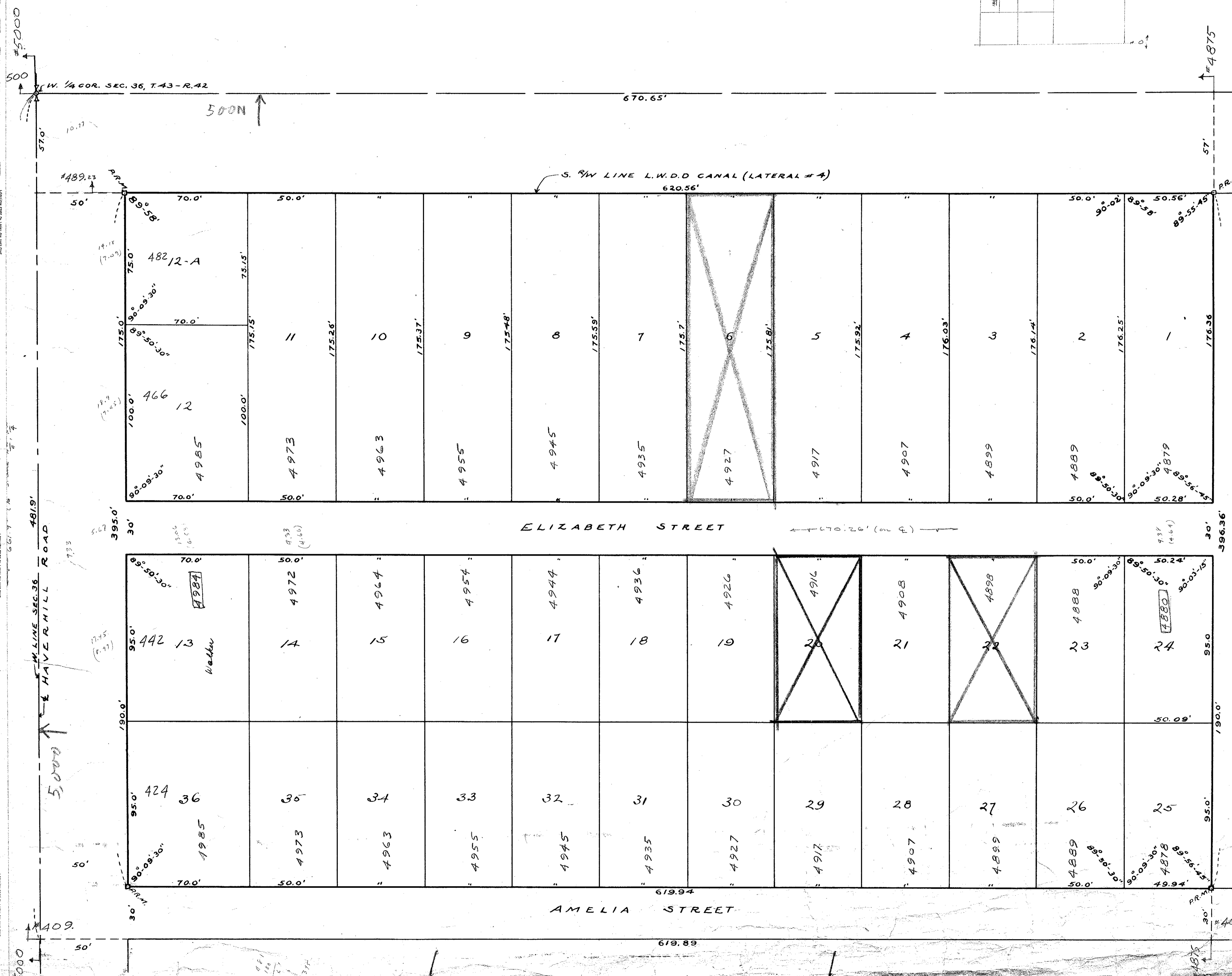
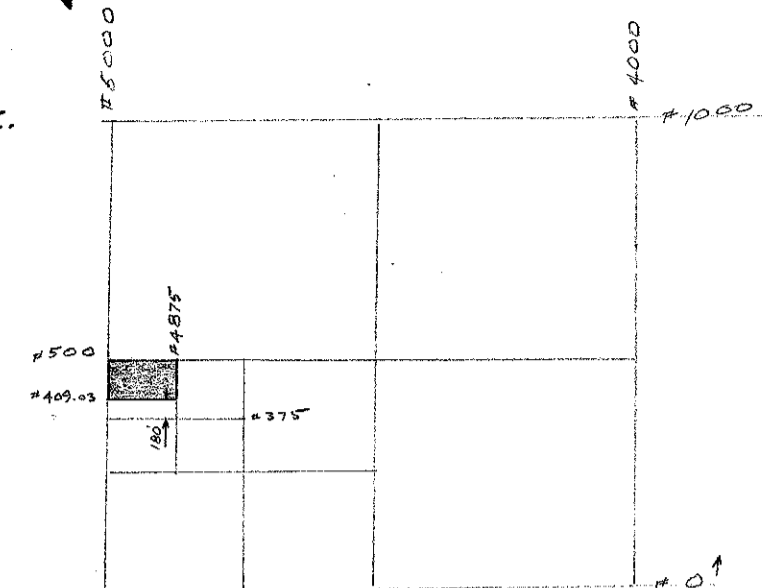
NOTE:
THIS PLAT REFILED
TO CORRECT ERROR IN DEDICATION

46

11

STATE OF FLORIDA
COUNTY OF PALM BEACH
This Plat was filed for record at 8:58 A.M.
this 12th day of DEC.
1946, and duly recorded in Plat Book No.
21 on page 46
J. ALEX ARNETTE, Clerk Circuit Court
By Marjorie B. Rose

STATE OF FLORIDA
COUNTY OF PALM BEACH
This Plat was filed for record at 2:15 P.M.
this 18th day of June
1946, and duly recorded in Plat Book No.
21 on page 11
J. ALEX ARNETTE, Clerk Circuit Court
By D. B. Overett, D.C.



DEDICATION

STATE OF FLORIDA } 35.
COUNTY OF PALM BEACH }
KNOW ALL MEN BY THESE PRESENTS that
Lillie E. Creel, unmarried, the owner in fee
simple of the tract of land shown hereon as
"LILLY'S SUBDIVISION" and more particularly
described as the N.W. 1/4 of the N.W. 1/4 of the
S.W. 1/4 of Sec. 36, Twp. 43 S., Rge. 42 E.,
Palm Beach County, Florida, has caused the same
to be surveyed and platted as shown hereon,
and does by these presents dedicate to the
perpetual use of the public all the Streets,
and Roads shown hereon, reserving unto herself,
her heirs, successors, assigns or legal representa-
tives the reversion or reversions of the same
whenever abandoned by the public or discon-
tinued by law.

IN WITNESS WHEREOF the said owner, Lillie
E. Creel, unmarried, has hereunto set her
hand and seal this 15th day of June A.D. 1946.
Signed, sealed and delivered
in the presence of:
N. R. Fitzgerald Lillie E. Creel (SEAL)

STATE OF FLORIDA } 35.
COUNTY OF PALM BEACH }
I HEREBY CERTIFY that on this day person-
ally appeared before me Lillie E. Creel, unmar-
ried, to me well known and known by me to be
the individual who executed the foregoing ded-
ication, and she executed the same for the
uses herein expressed.
Witness my hand and official seal of said
County and State this 15th day of June A.D. 1946.
My commission expires: March 24, 1947
Wojan of Public

APPROVED by Board of Supervisors, Lake Worth
Prainage District.
June 13 1946. BY W. J. Johnson
General Manager.

APPROVED by the Board of County Commissioners.
June 18 1946. BY J. W. Boyd
County Engineer.

AFFIDAVIT

STATE OF FLORIDA } 35.
COUNTY OF PALM BEACH }
I HEREBY CERTIFY that the tract of land
shown on the attached plat as "LILLY'S SUBDIV-
ISION" was surveyed and platted under my
direction and that said plat is a correct and
true representation thereof to the best of my
knowledge and belief, and that Permanent Ref-
erence Monuments have been set as required
by law.

Augusta Weisbucht
Registered Surveyor No. 187.
Subscribed and Sworn to before me this
17th day of June A.D. 1946.
Sidney B. Davis
Notary Public
My commission expires:
Nov. 28 1948

Calc. B. W. O.
36/43/45