

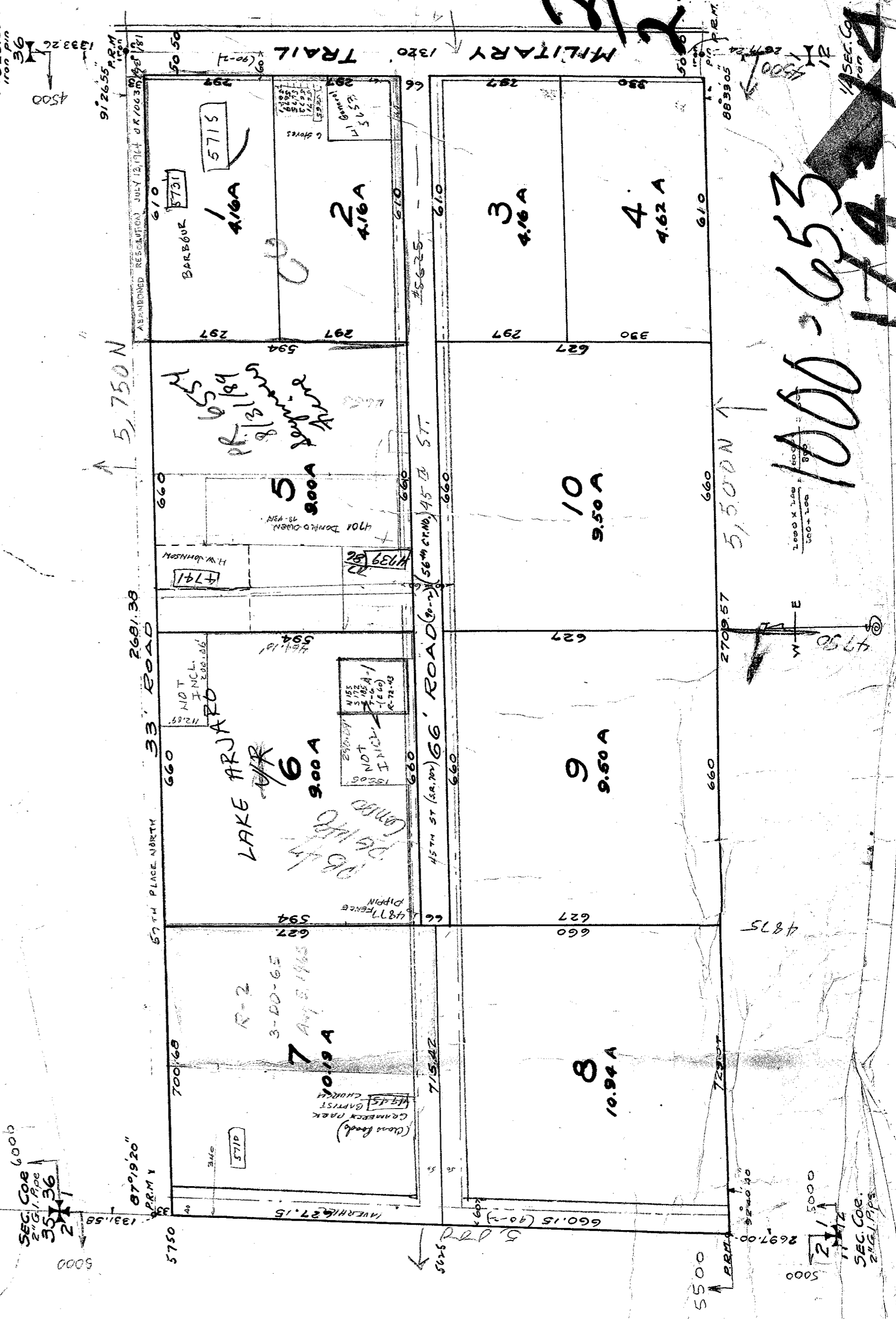
DRAWING NUMBER  
PLAN HOLD CORPORATION • IRVINE, CALIFORNIA  
REGISTRY NUMBER 02348

DRAWING NUMBER  
**20-23**  
PLAN HOLD CORPORATION • IRVINE, CALIFORNIA  
REGISTRY NUMBER 02348

STATE OF FLORIDA  
COUNTY OF PALM BEACH  
This plan was filed for recording July 19, 1943.  
3 20" map of July  
20 5:00 PM  
23  
Agnes D. Bennett

**ADAMS SUBDIVISION**  
OF THE 50,1320 FT. OF  
GOV. LOTS 1 & 2, SEC. 1, T.43 S., R.42 E.,  
LYING WEST OF THE MILITARY TRAIL  
PALM BEACH COUNTY, FLORIDA  
FOR  
**A. C. ADAMS**  
SCALE 1"=200' MARCH 1942.  
H.C. FUGATE, Registered Surveyor,  
Florida Cert. No. 132.

Approved July 19, A.D. 1943.  
BOARD OF COUNTY COMMISSIONERS  
By: *P.B. Williams*  
Asst. County Engineer.



20  
23

1000-653  
174