

92/14/26

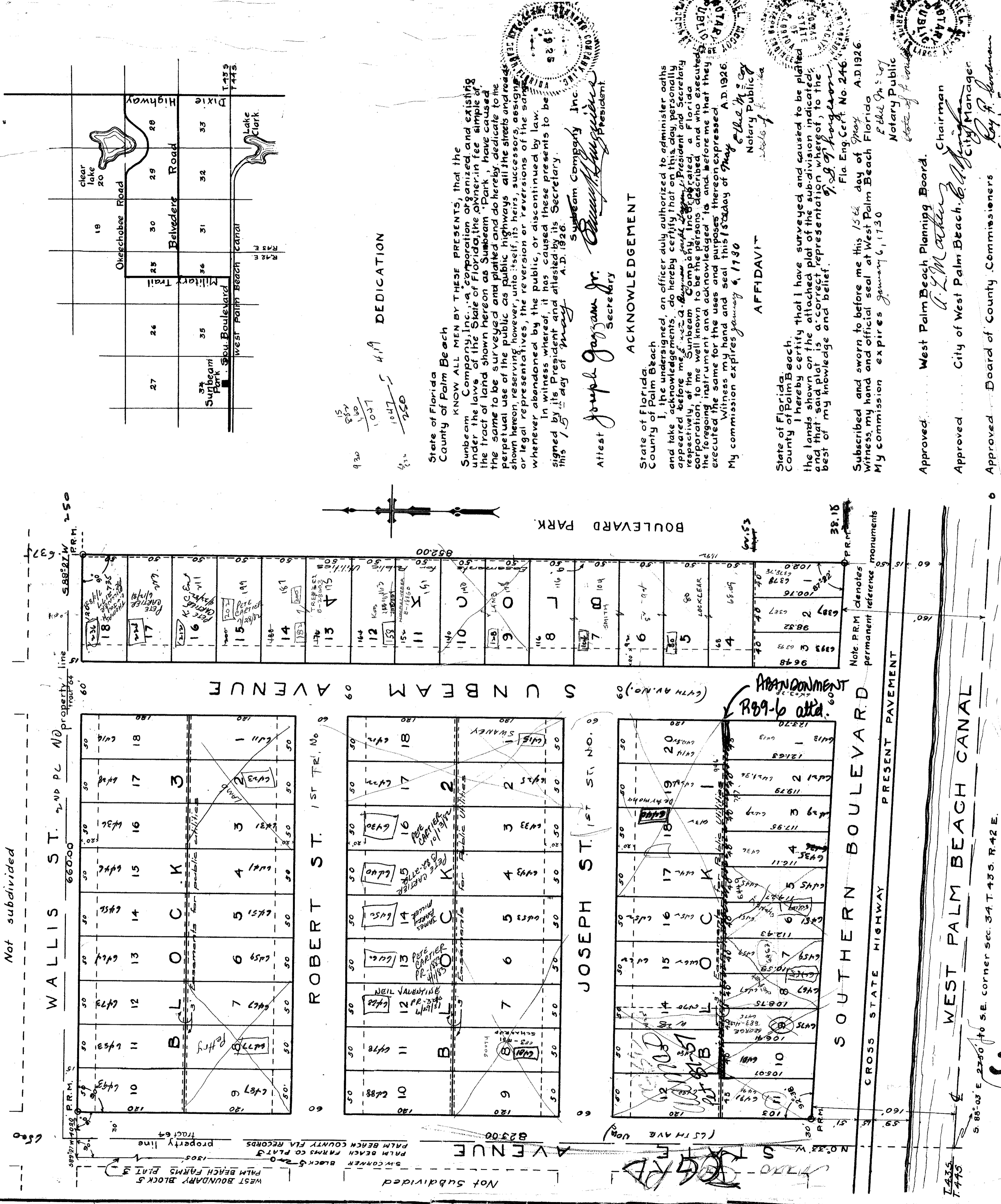
# SUNBEAM PARK 3234

WEST PALM BEACH.  
 PALM BEACH COUNTY FLA.  
 SUNBEAM COMPANY INC. WEST PALM BEACH FLA.

A SUBDIVISION OF TRACT 64, BLOCK 5, PALM BEACH FARMS CO. PLAT 3.

AS FILED IN PLAT BOOK #2 PALM BEACH COUNTY RECORDS. PAGE 46

Note:  
 Numbers deviate to comply with P.B.C.  
 Plat. See Sheet #2 in P.B.C. same numbering  
 folder for call.



15  
 857  
 1007  
 1047  
 250  
 419  
 DEDICATION

State of Florida  
 County of Palm Beach

KNOW ALL MEN BY THESE PRESENTS, that the Sunbeam Company, Inc., a corporation organized and existing under the laws of the State of Florida, the owner in fee simple of the tract of land shown hereon as Sunbeam Park, has caused the same to be surveyed and platted and do hereby dedicate to the perpetual use of the public as public highways all the streets and roads shown hereon, reserving however, unto itself, its heirs, successors, assigns or legal representatives, the reversion or reversions of the same, whenever abandoned by the public, or discontinued by law.

In witness whereof, it has caused these presents to be signed by its President and attested by its Secretary this 15<sup>th</sup> day of May, A.D. 1926.

Sunbeam Company Inc.  
 President  
 Secretary

Attest Joseph J. Grogan Jr.  
 Secretary

ACKNOWLEDGEMENT

State of Florida  
 County of Palm Beach

I, the undersigned, an officer duly authorized to administer oaths and take readings, do hereby certify that on this day, personally appeared before me the undersigned, the President and Secretary respectively of the Sunbeam Company, Inc., a corporation organized and existing under the laws of the State of Florida, and who executed the foregoing instrument and acknowledged to me and before me that they executed the same for the uses and purposes thereon expressed.

Witness my hand and seal this 15<sup>th</sup> day of May, A.D. 1926.  
 My commission expires January 6, 1930.

Notary Public  
 State of Florida

AFFIDAVIT

State of Florida  
 County of Palm Beach

I hereby certify that I have surveyed and caused to be platted the lands shown on the attached plat of the subdivision indicated, and that said plat is a correct representation thereof to the best of my knowledge and belief.

Witness my hand and official seal at West Palm Beach Florida this 15<sup>th</sup> day of May, A.D. 1926.  
 My commission expires January 6, 1930.

Notary Public  
 State of Florida

Approved: West Palm Beach Planning Board.  
 Chairman  
 City of West Palm Beach  
 City Manager  
 Board of County Commissioners  
 County Engineer

NOTE.  
 BUILDING LINE 20' FROM FRONT LINE OF ALL LOTS EXCEPT LOTS FRONTING ON SOUTHERN BOULEVARD.  
 3' EASEMENT ON REAR OF ALL LOTS FOR PUBLIC UTILITIES SHOWN BY DOTTED LINES.  
 STREETS TO BE PAVED SURFACED WITH MARL AND ROCK MINIMUM WIDTH OF TEN FEET.

1000-610  
 34/43/42  
 SUNBEAM PARK  
 92/14/26

26

Filed for Record at 10:00 AM  
 June 17  
 1926

T. G. THORGESEN  
 CIVIL ENGINEER  
 P.L.A. CERT. 1946  
 SCALE 1" = 60' MAY 15 '26