

STATE OF FLORIDA  
 County of Palm Beach  
 This Plat was filed for Record at  
 this 4<sup>th</sup> day of June 1926  
 and duly recorded in Plat Book No. 14  
 at Page 25  
*J. J. Ginn* Clerk Circuit Court

25

PLAT 2  
 LAKE IDA GARDENS  
 DELRAY - PALM BEACH COUNTY - FLA.

VACATED  
 8/9/1954  
 DB 1064 Pg. 494

21

DEDICATION

KNOW ALL MEN BY THESE PRESENTS:  
 That the Sculthorp Realty Company, Inc. a corporation organized and existing under the laws of the State of Florida, owner in fee simple of the tract of land shown on this plat and described as follows:  
 Being the N 1/4 of the SW 1/4 of the SE 1/4 of Sec. 8, Twp. 43 S., R. 13 E., Palm Beach County, Fla., or otherwise being described as the N 1/4 of Lot 3 according to the plat now on file in Plat Book B page 45 in the office of the Clerk of Circuit Court, Palm Beach Co., Florida.  
 has caused said land to be surveyed and platted and does hereby dedicate to the perpetual use of the public as public highways the streets and alleys shown hereon, reserving unto itself the reversion and reversions thereof whenever the same shall be abandoned by the public or discontinued by law.  
 In Witness Whereof, said Sculthorp Realty Co. Inc. has caused these presents to be signed on its behalf by its President and attested by its Secretary, and its corporate seal, affixed this 30<sup>th</sup> day of March A.D. 1926

Attest: *Stanley F. Sculthorp*  
 Secretary  
*Jesse L. Sculthorp*  
 President  
 SCULTHORN REALTY CO. INC.

ACKNOWLEDGMENT

COUNTY OF PALM BEACH,  
 STATE OF FLORIDA.  
 I Herby Certify, That on this 30<sup>th</sup> day of March A.D. 1926, before me personally appeared Jesse L. Sculthorp and Stanley F. Sculthorp respectively, President and Secretary of Sculthorp Realty Co. Inc., a corporation under the laws of the State of Florida, to me known to be the persons described in and who executed the foregoing dedication and severally acknowledged the execution thereof to be their free act and deed as such officers for the uses and purposes therein mentioned, and that they affixed thereto the official seal of said Corporation, and the said dedication is the act and deed of said Corporation.  
 Witness my hand and official seal at Delray in the County of Palm Beach and State of Florida, the day and year last aforesaid.

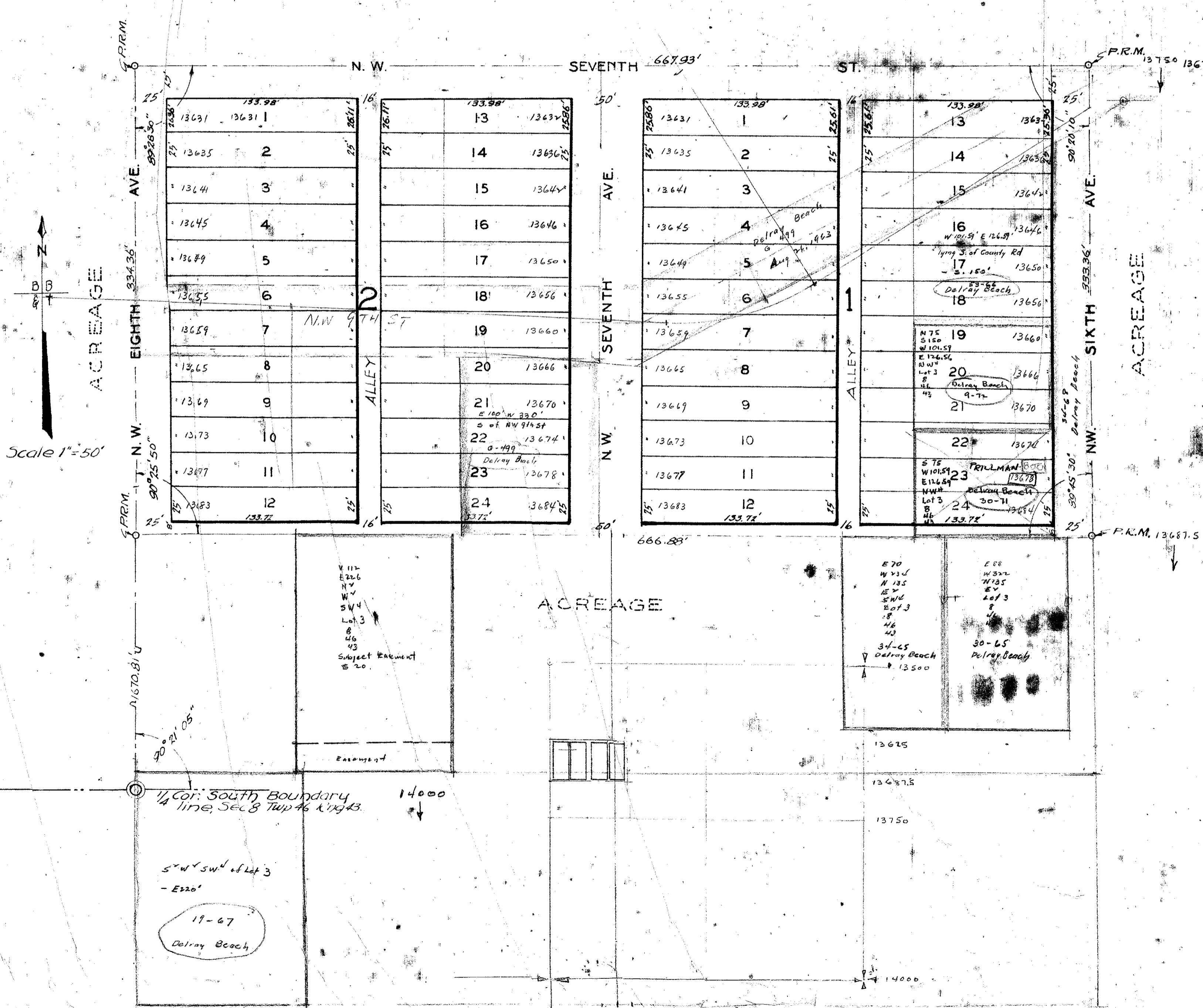
*J. W. R.*  
 Notary Public  
 My commission expires July 6-1927

ENGINEERS CERTIFICATE

We Certify, That the location, measurements and angles of the boundary lines of the plat shown hereon, to be taken from actual data found on the ground by survey under our direction, that the subdivision into lots and as located by the above mentioned survey, was made under our direction, and that the information shown hereon is true and accurate to the best of our knowledge and belief.

BUTLER BARNETT & TAYLOR  
 By *W. H. Barnett*  
 Florida State Certified #14  
 Subscribed and sworn to before me this 26<sup>th</sup> day of May 1926  
*W. H. Barnett*  
 Notary Public  
 My commission expires May 3/1927

APPROVED BY CITY COUNCIL - CITY OF DELRAY: *Lauren C. Naisid* CITY CLERK  
 APPROVED BY BOARD OF COUNTY COMMISSIONERS: *Ray P. Goodman* COUNTY ENGINEER



LAKE IDA GARDENS - PLAT #2

14/25

BUTLER BARNETT & TAYLOR  
 Civil Engineers  
 411 N. Cityway Bank Bldg.  
 West Palm Beach, Florida

DRAWING NUMBER  
 14-25

DRAWING NUMBER

DRAWING NUMBER

DRAWING NUMBER

PLAN HOLD CORPORATION - IRVINE, CALIFORNIA  
 REGISTERED PROFESSIONAL ENGINEER

PLAN HOLD CORPORATION - IRVINE, CALIFORNIA  
 REGISTERED PROFESSIONAL ENGINEER

PLAN HOLD CORPORATION - IRVINE, CALIFORNIA  
 REGISTERED PROFESSIONAL ENGINEER