

Any information given herewith is obtained from sources we consider reliable. However, we are not responsible for Misstatements of Facts, Errors, Omissions, Prior Sales, Withdrawal from Market, or Change in Price Without Notice.

# REPLAT OF LOXAHATCHEE DISTRICT SUBDIVISION. LOXAHATCHEE GROVES

PALM BEACH COUNTY, FLORIDA.  
PALM BEACH LOXAHATCHEE COMPANY  
WEST PALM BEACH, FLORIDA

A SUBDIVISION OF SECTIONS 17-18-19-20-21, THE N.W. 1/4 AND W. 1/2 OF S.W. 1/4 OF SECTION 22. THE W. 1/2 OF N.W. 1/4 AND W. 1/2 OF S.W. 1/4 OF SECTION 27. SECTIONS 28-29-30, ALL OF SECTIONS 31-32 & 33 NORTH OF WEST PALM BEACH CANAL, THE W. 1/2 OF N.W. 1/4 AND ALL OF W. 1/2 OF S.W. 1/4 OF SECTION 34 NORTH OF WEST PALM BEACH CANAL. ALL IN T. 43 S - R. 41 E.

STATE OF FLORIDA  
This instrument was filed for record at  
5:25 p.m. on the 14th day of  
June, 1925, in Public Office of  
Deputy Clerk of the County of Palm Beach,  
Florida, at West Palm Beach, Florida.  
J. G. Thorgeason  
Deputy Clerk

DEDICATION -

SCALE 1 IN. = 1000 FT.

State of Florida }  
County of Palm Beach } SS  
KNOW ALL MEN BY THESE PRESENTS, that the Palm Beach Loxahatchee Company Inc., a corporation organized and existing under the Laws of the State of Florida, the owners in fee simple of the tract of land shown hereon as Loxahatchee Groves, have caused the same to be surveyed and platted and do hereby dedicate to the perpetual use of the public as public highways all the roads shown hereon. Reserving however unto itself, its heirs, successors, assigns or legal representatives the reversion or reversions of the same whenever abandoned by the public or discontinued by Law.  
In witness whereof, it has caused these presents to be signed by its President, and attested by its Secretary  
this 4th day of June, A.D. 1925  
Palm Beach Loxahatchee Co. Inc.

Attest: J. G. Thorgeason Secretary  
Geo. F. Bancel President

ACKNOWLEDGEMENT -  
State of Florida }  
County of Palm Beach } SS  
I, the undersigned, an officer duly authorized to administer oaths and take acknowledgements, do hereby certify that on this day personally appeared before me George F. Bancel and B. D. Cole, President and Secretary respectively, of the Palm Beach Loxahatchee Company Inc., a Florida corporation, to me well known to be the person described and who executed the foregoing instrument and acknowledged to and before me that they executed the same for the uses and purposes therein expressed.  
Witness my hand and seal, this 4th day of June, A.D. 1925  
My commission expires Dec 2nd 1928  
J. G. Thorgeason  
Notary Public

AFFIDAVIT -  
State of Florida }  
County of Palm Beach } SS  
I hereby certify that I have surveyed and caused to be platted, the lands shown on the attached plat of the Sub-Division indicated and that said plat is a correct representation thereof to the best of my knowledge and belief.  
J. G. Thorgeason  
Fla. Eng. Cert. No. 246  
Subscribed and sworn to before me this 4th day of June, A.D. 1925  
witness my hand and official seal at West Palm Beach, Florida.  
My commission expires Dec 2nd 1928  
J. G. Thorgeason  
Notary Public

ALL TRACTS ARE INSIDE A 35 MILE SYSTEM OF CANALS AND ROADS.

ARTHUR MURRAY  
REAL ESTATE  
LOXAHATCHEE - 683-1370  
LAKE WORTH, FLORIDA - 585-5385

EARL GILCHRIST - BRANCH MGR.  
967-3444 (Res.)  
JACK DELATUSH, ASSOC.  
582-4720 (Res.)  
EDWARD OLSON, ASSOC.  
1-946-5732 (Res.)

1000-796

COLLECTING CANAL RD

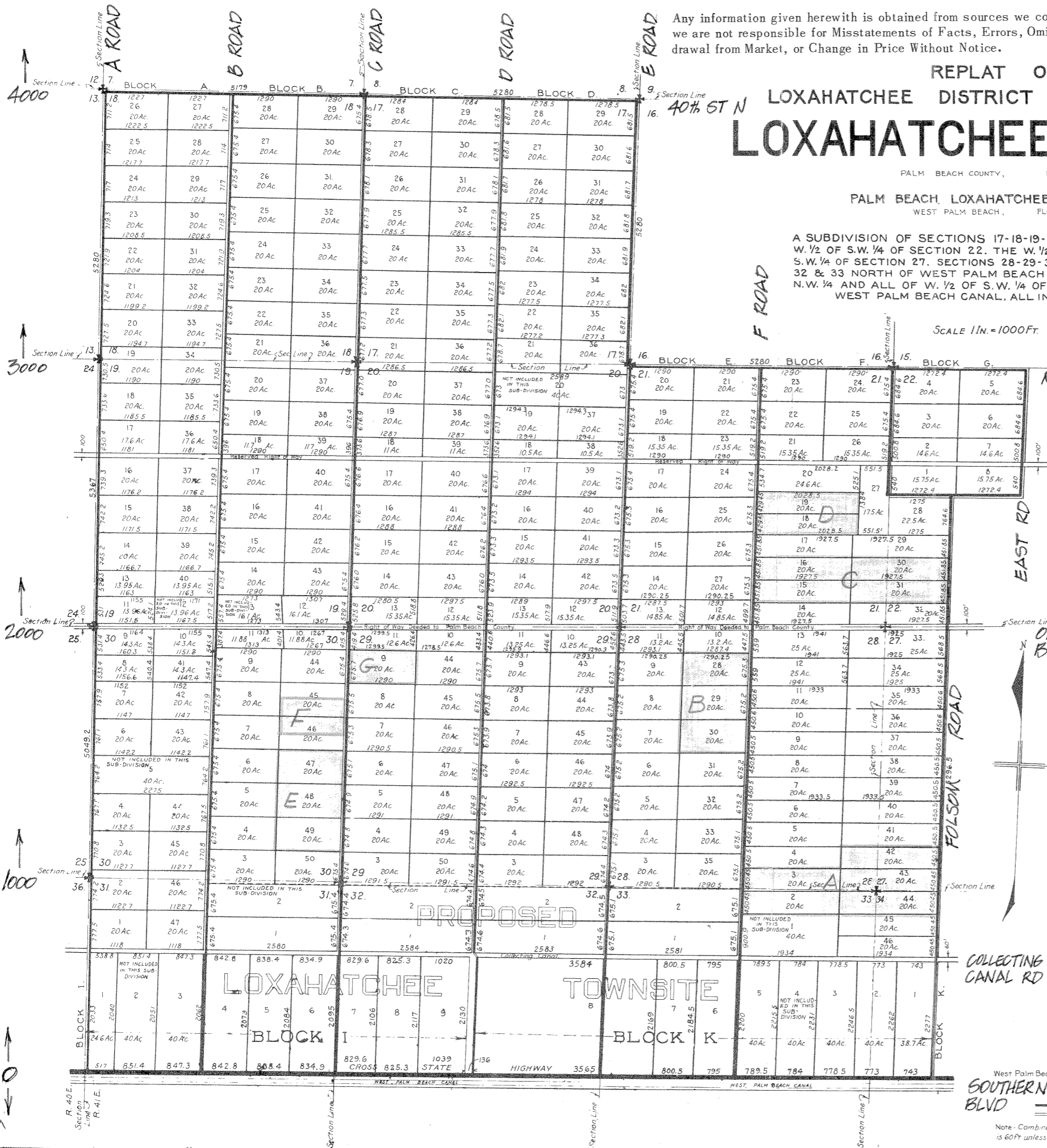
SOUTHERN BLVD

LEGEND.

— Roads  
— Canals and Drainage Ditches  
Note - Combined width of 4 ft. at top of ditch and road is 60 ft unless otherwise noted.

Field Work by: T. G. THORGEASON, C.E.  
Fla. Eng. Cert. No. 246  
Drawing by: CARR & McPADDEN, INC.  
CIVIL ENGINEERS,  
Fla. Eng. Cert. Nos. 113 & 250  
WEST PALM BEACH - FLORIDA.

DRAWING NO. E146



Section Line 4000  
Section Line 3000  
Section Line 2000  
Section Line 1000  
R. 40 E.  
Section Line 27  
R. 41 E.

Section Line 12  
Section Line 13  
Section Line 14  
Section Line 15  
Section Line 16  
Section Line 17  
Section Line 18  
Section Line 19  
Section Line 20  
Section Line 21  
Section Line 22  
Section Line 23  
Section Line 24  
Section Line 25  
Section Line 26  
Section Line 27  
Section Line 28  
Section Line 29  
Section Line 30  
Section Line 31  
Section Line 32  
Section Line 33  
Section Line 34