

DRAWING NUMBER  
9-26

Dedication

STATE OF FLORIDA  
COUNTY OF PALM BEACH  
KNOW ALL MEN BY THESE PRESENTS, that E. M. CLEVELAND, an unmarried man, the owner in fee simple of that certain tract of land shown and described hereon, more particularly described as follows: N 1/2 of NE 1/4 of NW 1/4 and N 1/2 of S 1/2 of NE 1/4 of NW 1/4 of SECTION 36 TWP 43 S, R 42 E, PALM BEACH COUNTY, FLORIDA, has caused the same to be surveyed and platted and does hereby dedicate to the perpetual use of the public, GLOVE STREET and MILITARY TRAIL, as shown hereon, reserving unto himself, his heirs, legal representatives and assigns, the reversion or reversion of the same whenever abandoned by the public or discontinued by law.

# PLAT OF The Cleveland Groveacres

# 26

N 1/2 OF NE 1/4 OF NW 1/4 AND N 1/2 OF S 1/2 OF NE 1/4 OF NW 1/4  
SECTION 36 TOWNSHIP 43 SOUTH, RANGE 42 EAST  
West Palm Beach, Florida  
SCALE 1" = 60'      MARCH, 1923

Signed and sealed in the presence of:  
*[Signature]*      *[Signature]*

DRAWING NUMBER

Acknowledgment

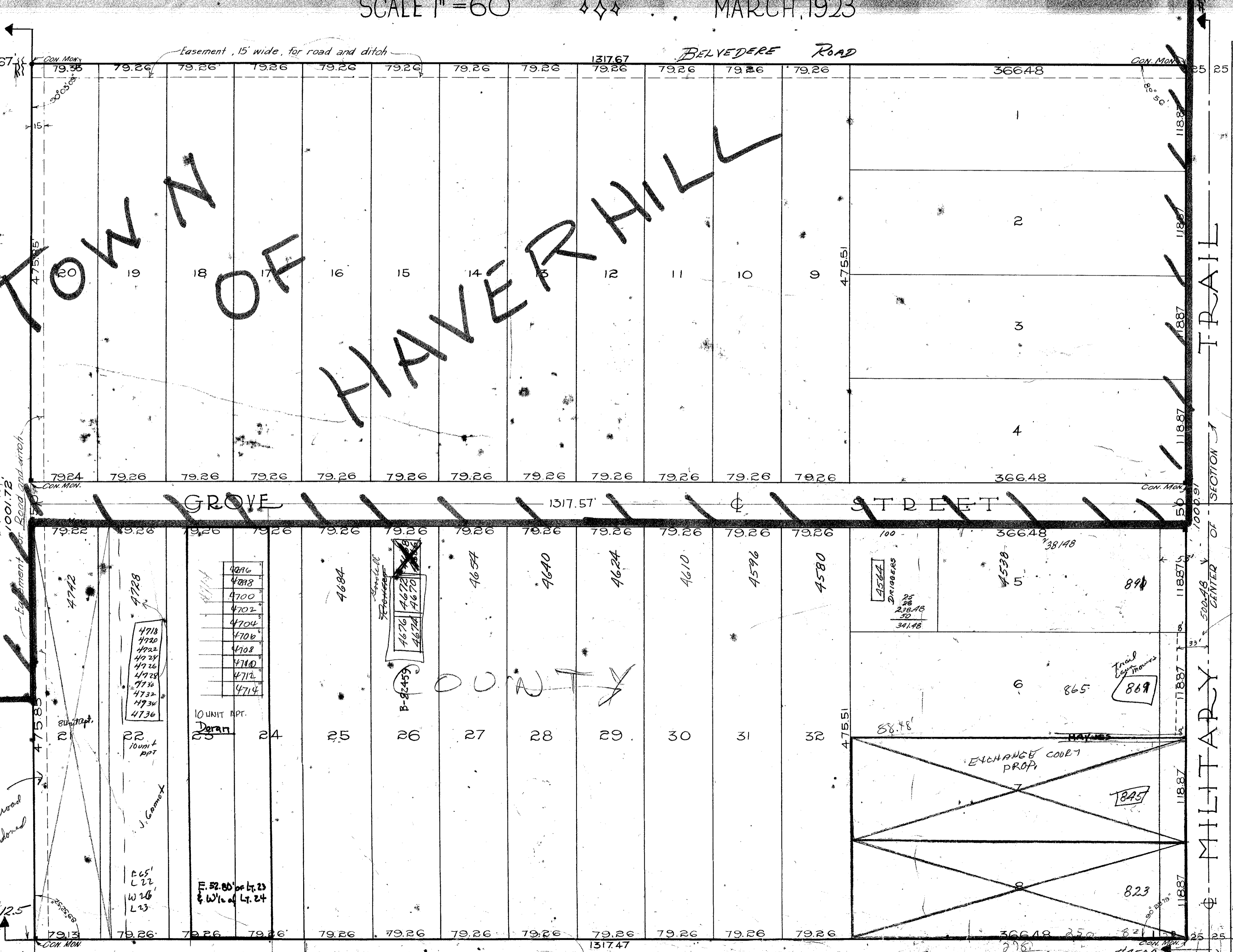
STATE OF FLORIDA  
COUNTY OF PALM BEACH  
I HEREBY CERTIFY that on this day personally appeared before me, an officer duly authorized to administer oaths and take acknowledgments, E. M. CLEVELAND, an unmarried man, to me well known to be the party described in and who executed the foregoing dedication and he acknowledged before me that he executed the same for the uses and purposes therein stated.

DRAWING NUMBER

Affidavit

STATE OF FLORIDA  
COUNTY OF PALM BEACH  
I HEREBY CERTIFY that the angles and measurements shown hereon are taken from actual data found on the ground by a survey under my direction and are true and accurate to the best of our knowledge and belief of that certain tract of land shown hereon and more particularly described as follows:  
N 1/2 of NE 1/4 of NW 1/4 and N 1/2 of S 1/2 of NE 1/4 of NW 1/4 of SECTION 36, TOWNSHIP 43 S, RANGE 42 E, PALM BEACH COUNTY, FLORIDA.

DRAWING NUMBER



5 3 5 Civil  
23 Civil 5  
23 Civil 9  
26  
True & Found

#906.25  
13344  
250 = 5.34 (15)  
134257  
250 = 5.37 (15)  
Present R/W  
as of 10-26-51

1000-677  
9  
26

Surveyed and platted  
by  
CARR & FADDEN, INC.  
Civil Engineers  
State Cert's Nos. 173 & 280  
WEST PALM BEACH, FLORIDA  
MARCH 1923