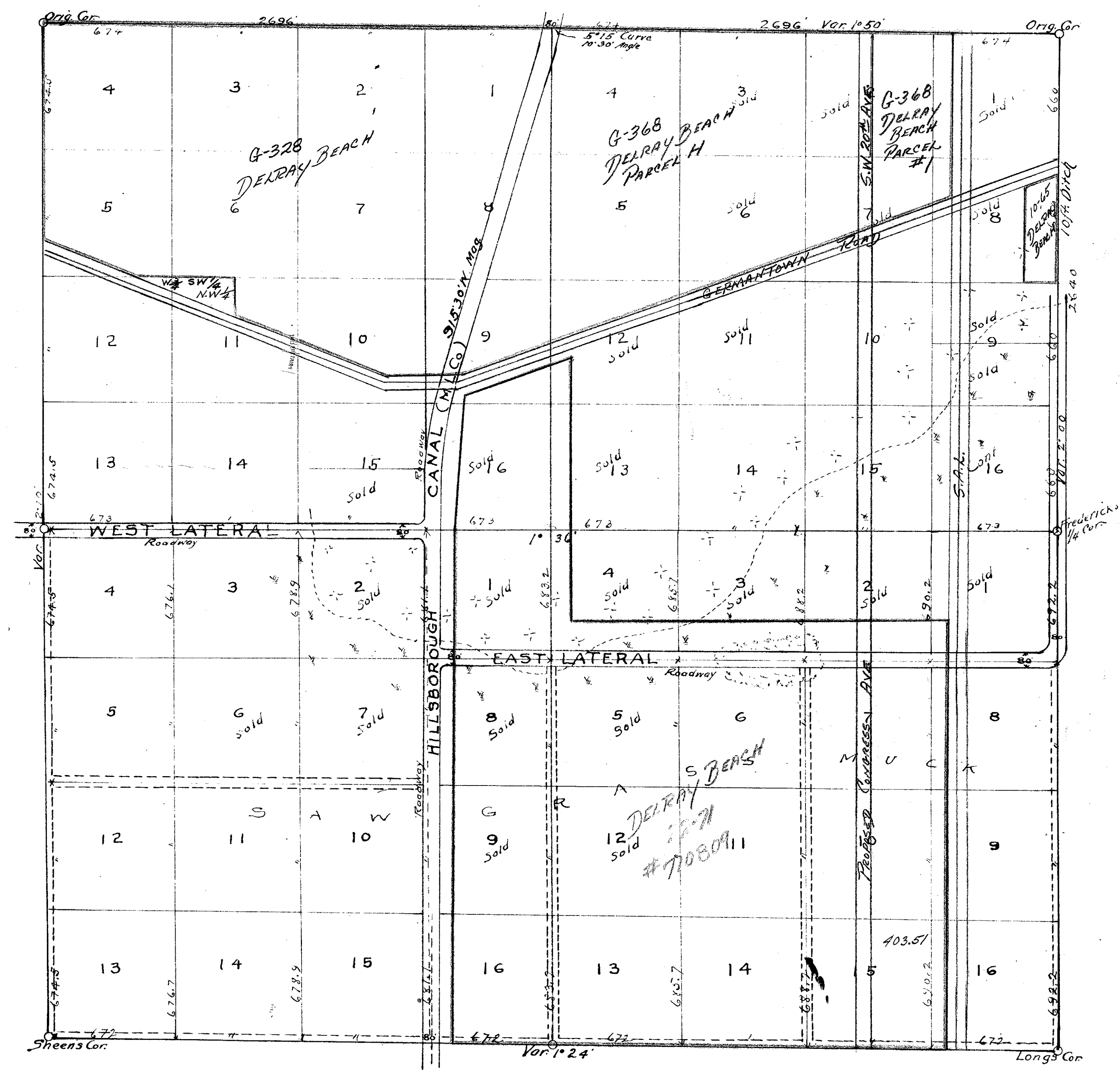


GERMANTOWN ROAD MAP IN THE MAKING  
AS PER CALL TO DESIGN #670210

MODEL LAND COMPANY'S  
SUBDIVISION OF  
THE SOUTH HALF OF SECTION 30, T. 46S, R. 43E.  
Scale 400ft. to 1 inch  
Surveyed by Geo. A. Long, 1915



I hereby certify that the plat herewith presented is a true and correct representation of the survey and subdivision of Section 30, Twp. 46S, R. 43E. as made by me, and that the boundaries, corners and distances shown there on, are shown in their true positions and distances; that the field work was done in conformity with the rules as set forth for governmental surveys and subdivisions. This to the best of my knowledge and belief.

Surveyor: \_\_\_\_\_

Personally appeared before me Geo. A. Long known to me to be the party who executed the foregoing affidavit, and affirms the same to be his free will and deed, this 12<sup>th</sup> day of April, 1916

*Elwyn H. Hines* Notary Public  
My term expires - March 6, 1915

1000-649  
May 16<sup>th</sup> 1916  
Plate  
Geo. A. Long  
Notary