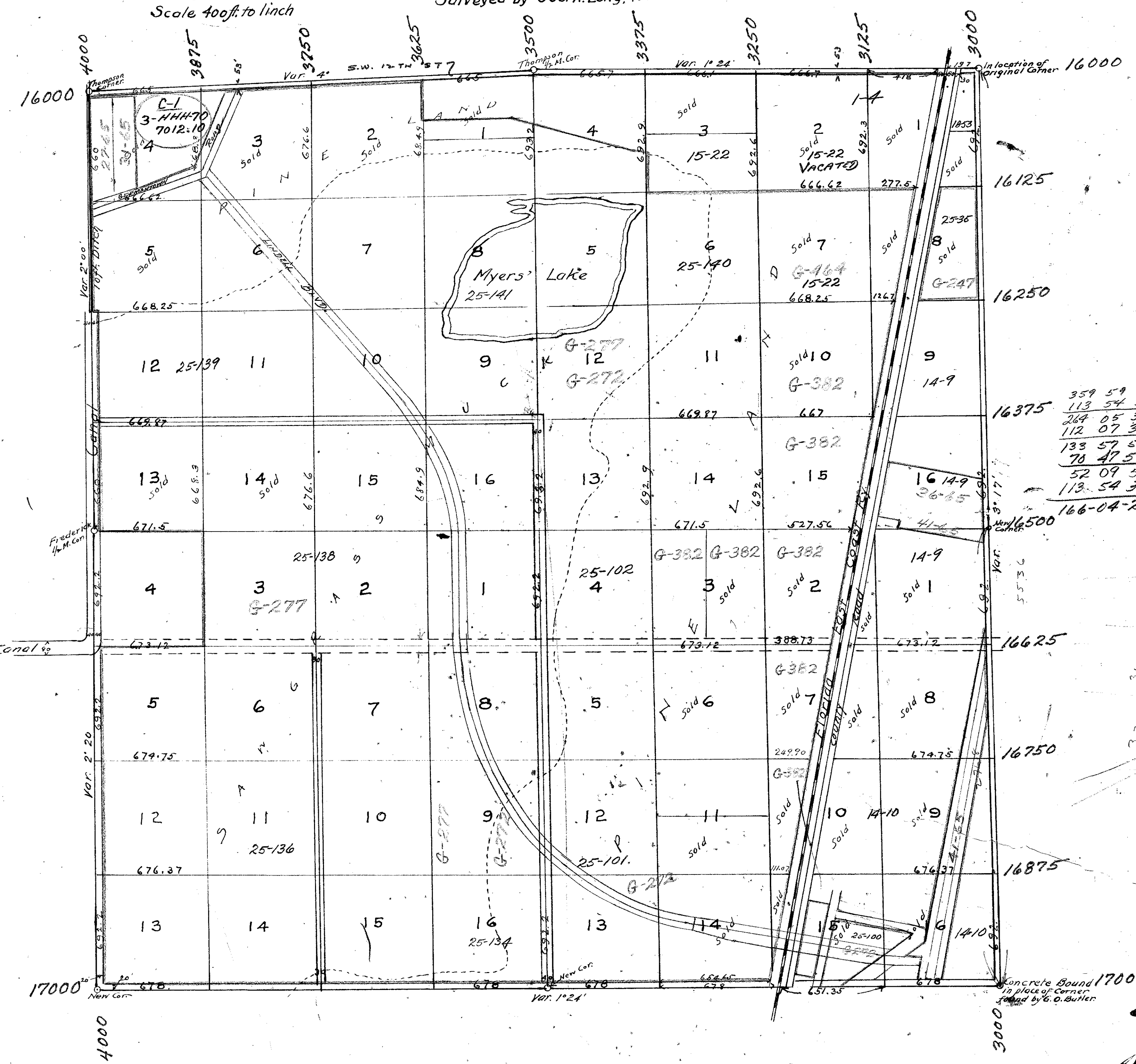


6-50

UNRECORDED FILE

MODEL LAND COMPANY'S
SUBDIVISION OF
SECTION 29, T. 46 S. R. 43 E.
Surveyed by Geo. A. Long, 1915.



I hereby certify that the plat herewith presented is a true and correct representation of the survey and subdivision of Section 29, Twp. 46 S., R. 43 E. as made by me; and that the boundaries, corners and distances shown there on are shown in their true positions and distances; that the field work was done in conformity with the rules as set forth for governmental surveys and subdivisions. This to the best of my knowledge and belief

Geo. A. Long
surveyor

Personally appeared before me, Geo. A. Long known to me to be the party who executed the foregoing affidavit and affirms the same to be his free will and deed, this 12th day of April, 1916
George W. Moore Notary Public.
My term expires March 6, 1918

359 59 60
113 54 30
269 05 30
112 07 30
133 57 54
70 47 56
52 09 58
113 54 30
166-04-28
113-54-30
112-07-36
226-02-06
180
46-02-06
133
52
70-47-56
46-02-06
24-45-50
113-54-30
158-40-20

6/50

1000-649

May 16 11th
Plats
Geo. A. Butler
Miner