

4-47

47

DEDICATION

STATE OF FLORIDA  
 COUNTY OF PALM BEACH  
 KNOW ALL MEN BY THESE PRESENTS, That the PIONEER INVESTMENT CO., a Florida Corporation, owning the lands situated in Palm Beach County, Florida, shown on this Plat No. 1, forming parts of Sections 33 and 34 in T.41 S., R.37 E., has caused the same to be surveyed and plotted and so hereby dedicates the perpetual use of the public the street and ways shown hereon, reserving, howsoever, unto themselves, their heirs, legal representatives and assigns, the reversion or reversions, whenever said streets or alleys or either or any of them shall be abandoned by the public or discontinued by law.

IN WITNESS WHEREOF, The PIONEER INVESTMENT CO. has caused these presents to be Subscribed by its President and its Corporate Secretary, hereunto attested and attested to before me this 16th day of Aug. A.D. 1924.

THE  
 PIONEER INVESTMENT CO. PLAT NO. 1  
 THE TOWNSITE OF  
 CANAL POINT  
 PALM BEACH COUNTY  
 FLORIDA

200 - March 4  
 47  
 Rev. 5. 1920

SCALE 1 inch = 60 feet  
 WARD RANDOLPH  
 ENGINEER  
 REG. NO. 391

199 of 183

Earl J. Reed  
 President  
 E.S. Motter  
 Secretary

ACKNOWLEDGMENT

STATE OF FLORIDA  
 COUNTY OF PALM BEACH  
 I, the undersigned officer authorized to take acknowledgments, duly qualified and acting, hereby certify that EARL J. REED, President and E.S. MOTTER, Assist. Sec. respectively of the PIONEER INVESTMENT CO. to me personally known, this day appeared before me in person and acknowledged that they executed the foregoing instrument as such officers of said Corporation, and I further certify that I know the said persons making such acknowledgments to be the individuals described in and who executed the said instrument.

IN WITNESS WHEREOF, I hereunto set my hand and Seal at Lake Worth in said County and State this 16th day of Aug. A.D. 1924.

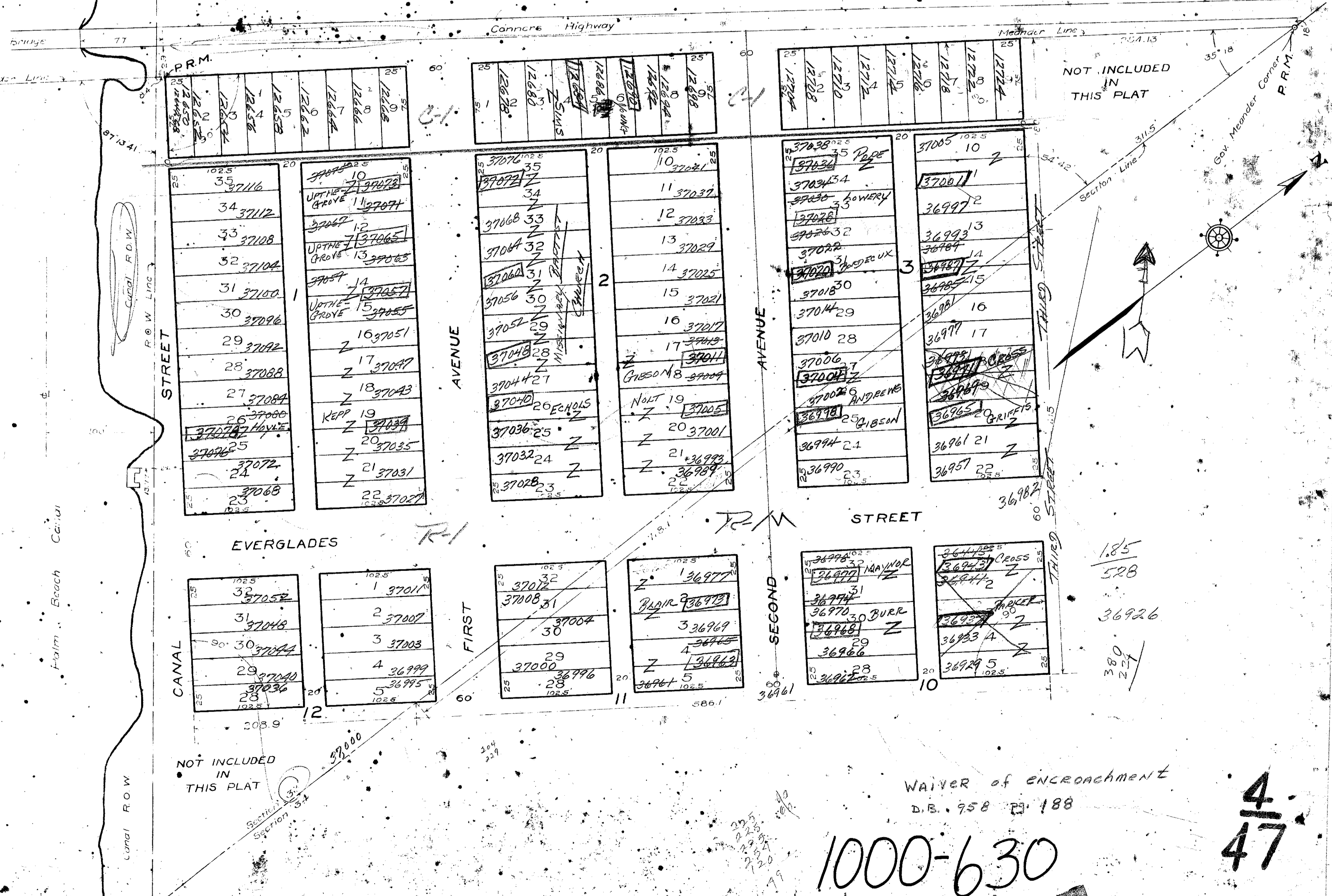
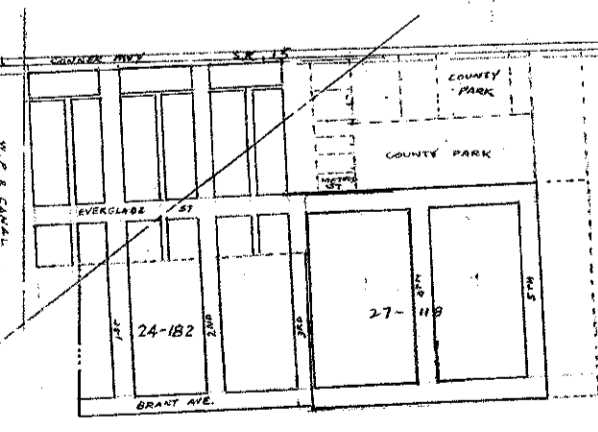
Henry F. Pitt  
 Notary Public  
 My Commission expires February 7, 1927

ENGINEER'S AFFIDAVIT

STATE OF FLORIDA  
 COUNTY OF PALM BEACH  
 I HEREBY CERTIFY, That the information contained on this map was obtained from actual data found on the ground by a survey under my direction, and that to the best of my knowledge and belief it was correctly made and is correctly shown upon the said plat.

Ward Randolph  
 State License No. 391  
 Sworn and subscribed to before me this 16th day of Aug. A.D. 1924.  
 Notary Public  
 My Commission expires February 7, 1927

APPROVED 1926  
 BOARD OF COUNTY COMMISSIONERS  
 BY COUNTY ENGINEER



WAIVER of ENCROACHMENT  
 D.B. 958 23 188  
 1000-630

47