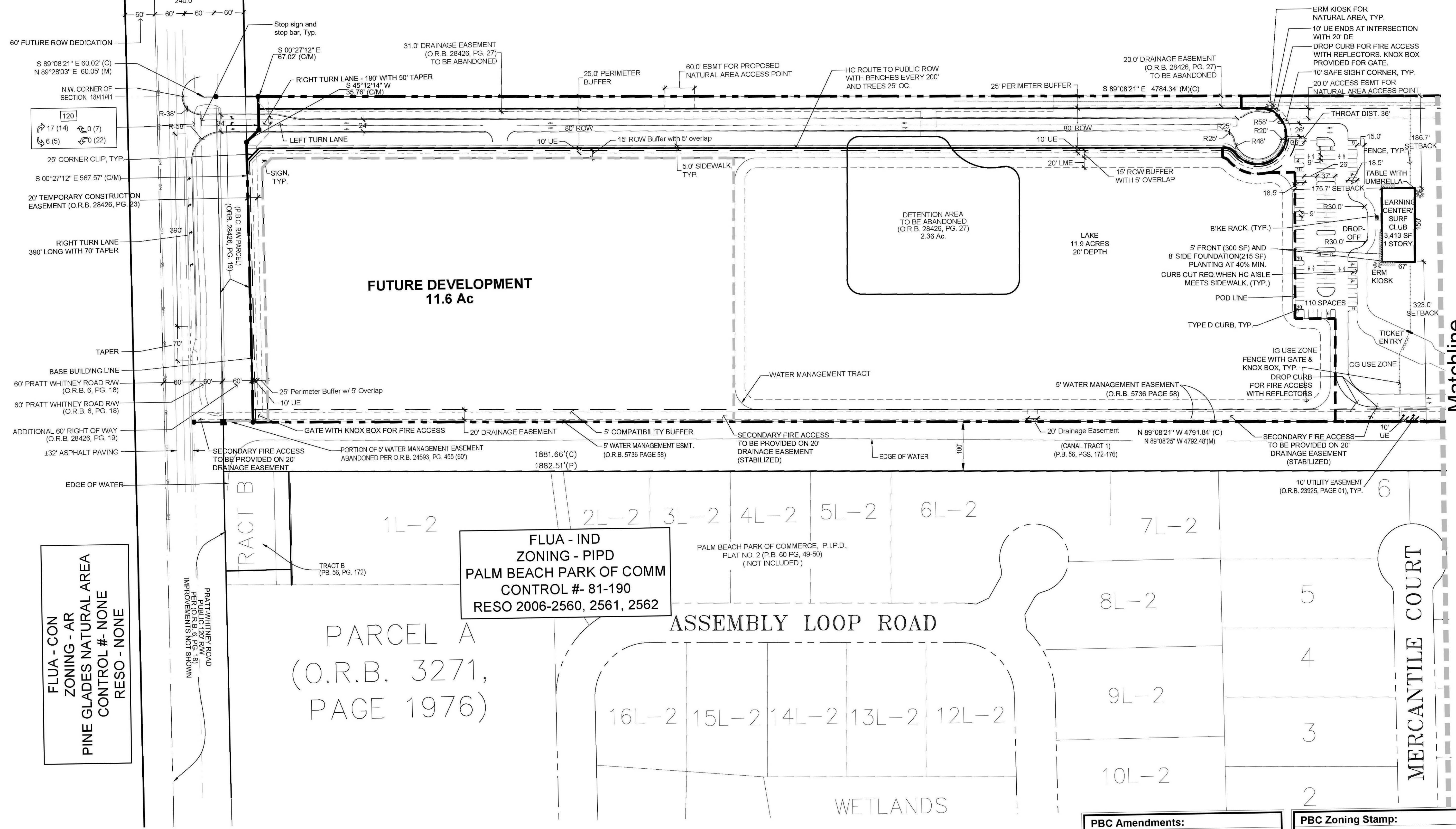


PINE GLADES NATURAL AREA
CONTROL # - NONE
RESO - NONE

UNPLATTED
(NOT INCLUDED)



FLUA - CON
ZONING - AR
PINE GLADES NATURAL AREA
CONTROL # - NONE
RESO - NONE

FLUA - IND
ZONING - PIPD
PALM BEACH PARK OF COMM
CONTROL # - 81-190
RESO 2006-2560, 2561, 2562

PARCEL A
(O.R.B. 3271,
PAGE 1976)

ASSEMBLY LOOP ROAD

WETLANDS

MERCANTILE COURT



Urban Planning & Design
Landscape Architecture
Communication Graphics

610 Clematis Street, Suite CU02
West Palm Beach, FL 33401
561.366.1100 FAX: 561.366.1111
www.udkstudios.com
#LCC000035

Copyright:
All ideas, designs, arrangements, and plans
represented by this drawing are owned by, and
the property of the designer, and were created
for the exclusive use of the specified project.
These ideas, designs, arrangements or plans
shall not be used by, or disclosed to any person,
firm, or corporation without the written
permission of the designer.

Palm Beach Park of Commerce
Surf Ranch Florida
Palm Beach County, FL
Preliminary Site Plan



0 50' 100' 200'
Scale: 1" = 100'-0"

Date: 11-15-16
Project No.: 80-026.149
Designed By: SCM
Drawn By: KK
Checked By: KWWJB

Revision Dates:
01-09-17 Submit PAC
04-24-17 Resubmit Site Plan
05-26-17 Resubmit Site Plan

PBC Amendments:

PBC Zoning Stamp:

PSP-2
of 3