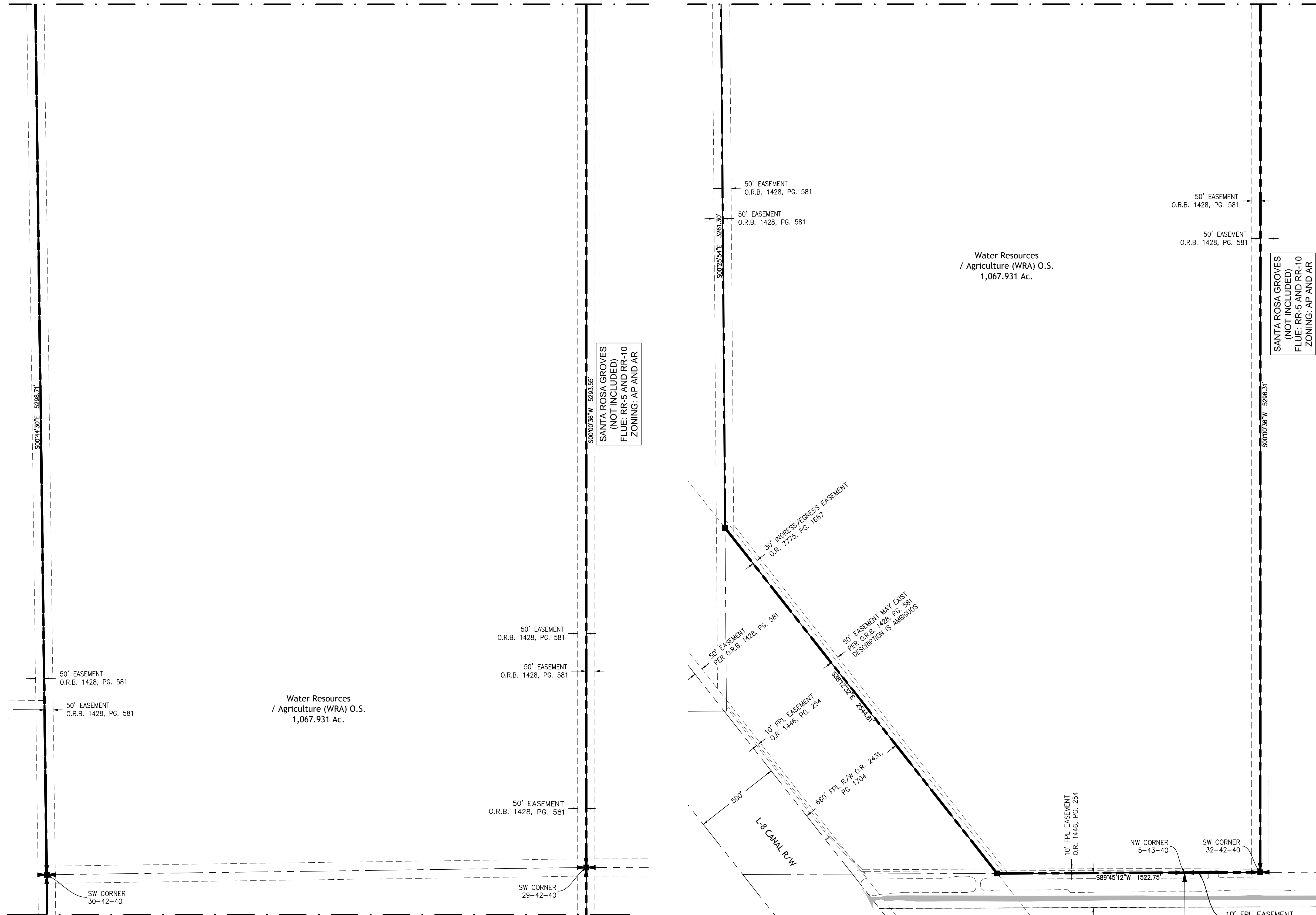


MATCHLINE - SEE PMP-9 FOR CONTINUATION

MATCHLINE - SEE BELOW CONTINUATION



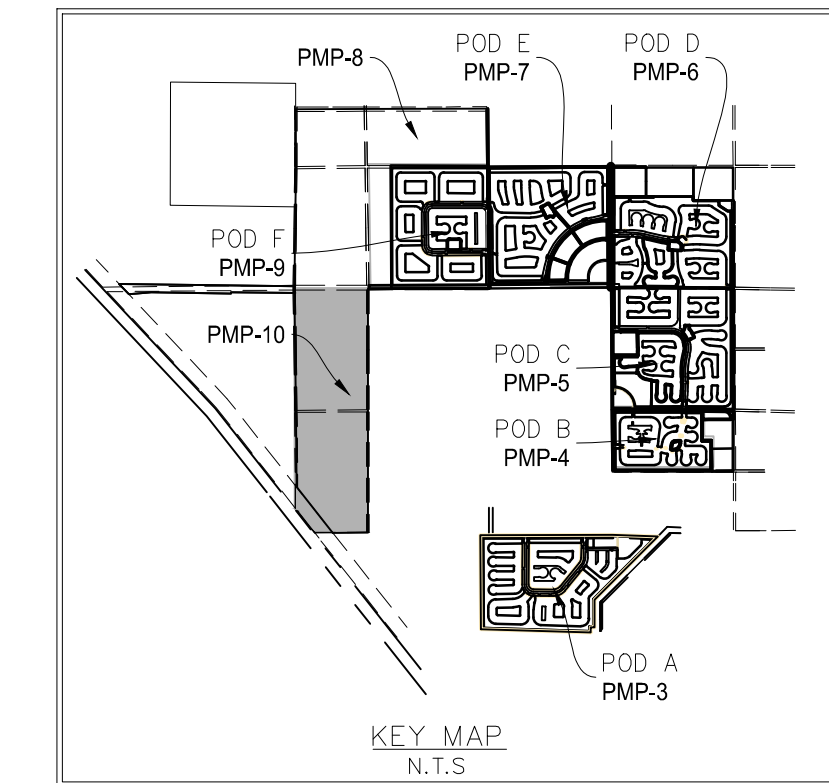
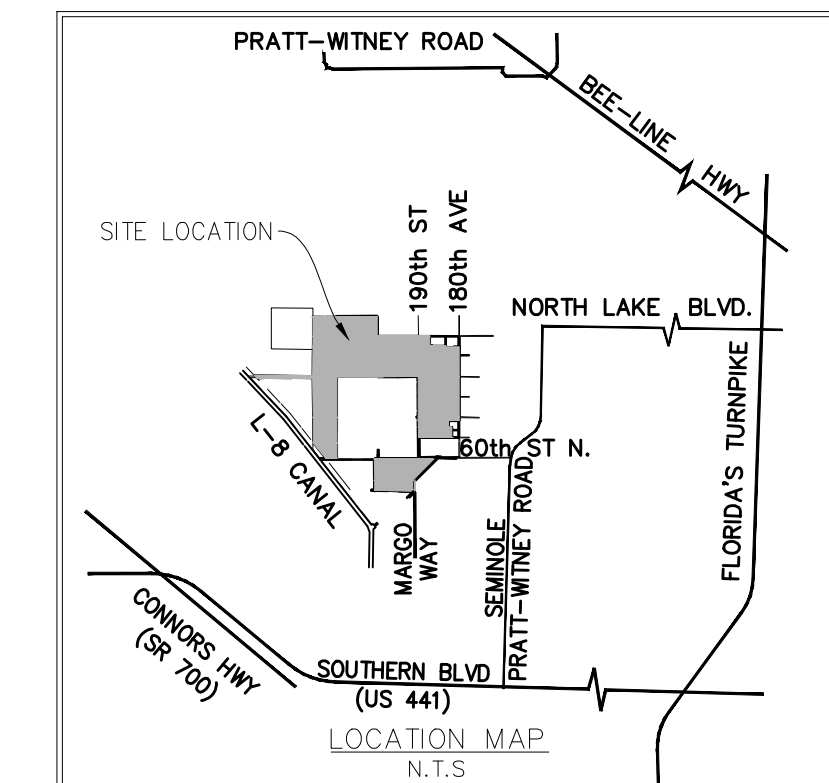
Water Resources / Agriculture (WRA) O.S. 1,067.931 Ac.

Water Resources / Agriculture (WRA) O.S. 1,067.931 Ac.

SANTA ROSA GROVES (NOT INCLUDED) FLUE: RR-5 AND RR-10 ZONING: AP AND AR

SANTA ROSA GROVES (NOT INCLUDED) FLUE: RR-5 AND RR-10 ZONING: AP AND AR

- LEGEND**
- AC - ACRES
 - AG - ABOVE GRADE
 - AP - AGRICULTURAL PRODUCTION
 - AR - AGRICULTURAL RESIDENTIAL
 - BE - BUFFER EASEMENT
 - [B.S.] - PALM TRAIL BUS STOP
 - C.B. - COMPATIBILITY BUFFER
 - CIE - CONCEPTUAL IMPROVEMENT EXPANSION
 - CON - CONSERVATION
 - DE - DRAINAGE EASEMENT
 - DU - DWELLING UNIT
 - I.B. - INCOMPATIBILITY BUFFER
 - ITID - INDIAN TRAILS IMPROVEMENT DISTRICT
 - L.A.E. - LIMITED ACCESS EASEMENT
 - LME - LAKE MAINTENANCE ESMT.
 - L.S.E. - LIFT STATION EASEMENT
 - O.R.B. - OFFICIAL RECORD BOOK
 - [O.S.] - OPEN SPACE
 - [P.A.] - PEDESTRIAN ACCESS
 - P.A.A. - PUBLIC ACCESS AREA
 - PDD - PLANNED DEVELOPMENT DISTRICT
 - P.G.A. - PEDESTRIAN GATHERING AREA
 - ROW OR RW - RIGHT OF WAY
 - [RR] - RURAL RESIDENTIAL
 - S.B.S. - SCHOOL BUS SHELTER
 - [STBK] - SETBACK
 - [T.D.] - TROLLEY DEPOT
 - T.S. - TROLLEY STOP
 - UE - UTILITY EASEMENT
 - WRA - WATER RESOURCES AGRICULTURE
 - => - VEHICULAR ACCESS
 - X - MODEL ROW
 - [] - OPEN SPACE
 - * - FOCAL POINT



Amendments:

Zoning Stamps:

200' NON EX. EASEMENT
O.R.B. 1329, PG. 142
O.R.B. 1504, PG. 839
O.R.B. 15855, PG. 1578
(I, E, M, IRR, & DE)
O.R.B. 1428, PG. 581

Amendments:

Zoning Stamps:

PALM BEACH WEST ASSOCIATES I, LLLP
 1600 SAWGRASS CORPORATE PKWY
 SUITE 400
 SUNRISE, FLORIDA 33323
 954-753-1730

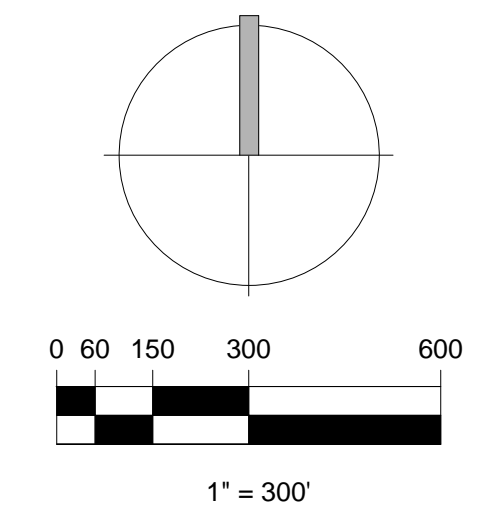
Consultants:
CIVIL ENGINEER
 GLH Engineering, LLC
 1600 Sawgrass Corporate Pkwy
 Suite 400
 Sunrise, FL 33323
 954-753-1730
SURVEYOR
 Sand and Hills Survey, Inc.
 8461 Lake Worth Road, Suite 410
 Lake Worth, FL 33467
 (561) 209-6048
TRAFFIC ENGINEER
 Simmons and White
 5601 Corporate Way, Suite 200
 West Palm Beach, FL 33407
 (561) 478-7848
PLANNERS
 Urban Design Kilday Studios
 610 Clematis Steert, Suit CU02
 West Palm Beach, FL 33401
 (561) 366-1100

Project:
INDIAN TRAILS GROVE - PUD

Palm Beach County, Florida
Sheet title:
PRELIMINARY Master Plan - Open Space

Date:
2015-07-15

Revisions:
 2015-09-28 Resubmittal
 2016-01-25 Resubmittal
 2016-02-22 Resubmittal
 2016-05-23 Resubmittal
 2016-08-29 Resubmittal
 2016-09-26 Resubmittal
 2016-10-24 Resubmittal
 2016-11-28 Resubmittal
 2016-12-15 Resubmittal



Sheet number:
PMP-10