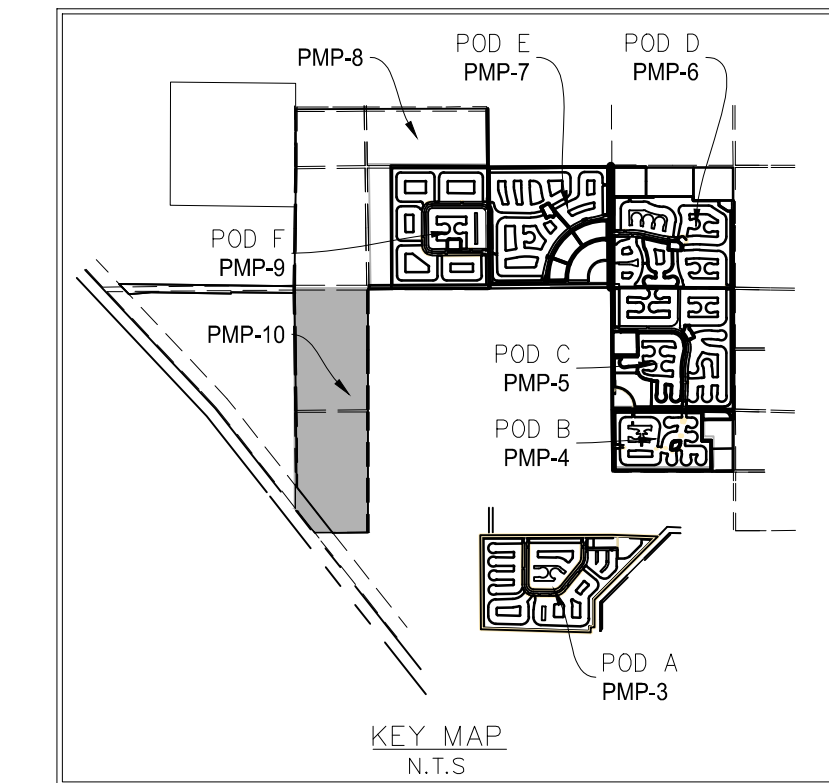
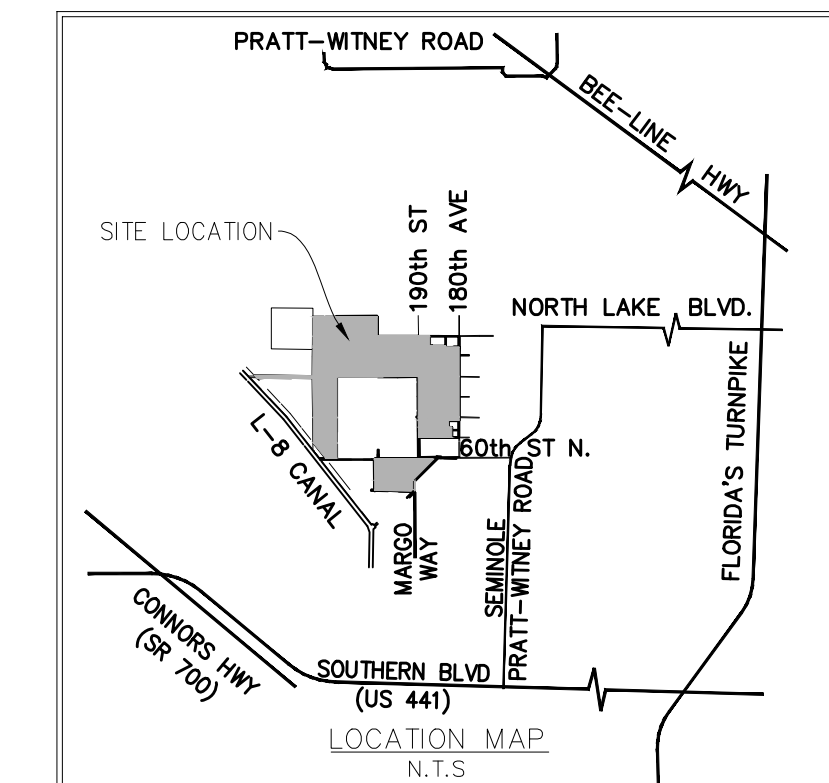
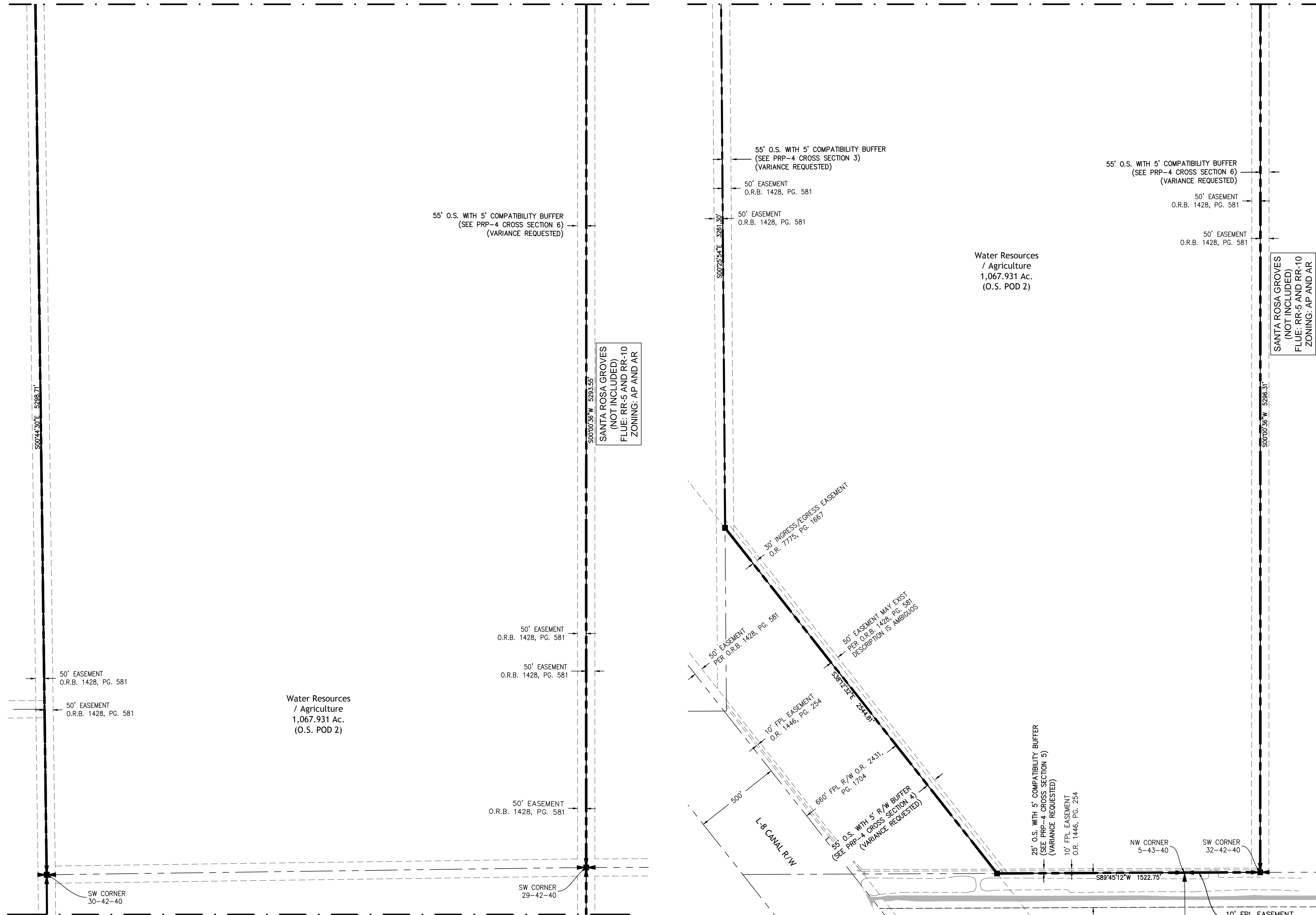


MATCHLINE - SEE PMP-9 FOR CONTINUATION

MATCHLINE - SEE BELOW CONTINUATION



SANTA ROSA GROVES  
(NOT INCLUDED)  
FLUE: RR-5 AND RR-10  
ZONING: AP AND AR

- LEGEND**
- AC - ACRES
  - AG - ABOVE GRADE
  - AP - AGRICULTURAL PRODUCTION
  - AR - AGRICULTURAL RESIDENTIAL
  - BE - BUFFER EASEMENT
  - [B.S.] - PALM TRAIL BUS STOP
  - C.B. - COMPATIBILITY BUFFER
  - CON - CONSERVATION
  - DE - DRAINAGE EASEMENT
  - DU - DWELLING UNIT
  - I.B. - INCOMPATIBILITY BUFFER
  - ITID - INDIAN TRAILS IMPROVEMENT DISTRICT
  - L.A.E. - LIMITED ACCESS EASEMENT
  - LME - LAKE MAINTENANCE ESMT.
  - L.S.E. - LIFT STATION EASEMENT
  - O.R.B. - OFFICIAL RECORD BOOK
  - O.S. - OPEN SPACE
  - [P.A.] - PEDESTRIAN ACCESS
  - [P.A.A.] - PUBLIC ACCESS AREA
  - PDD - PLANNED DEVELOPMENT DISTRICT
  - [P.G.A.] - PEDESTRIAN GATHERING AREA
  - ROW OR RW - RIGHT OF WAY
  - RR - RURAL RESIDENTIAL
  - [S.B.S.] - SCHOOL BUS SHELTER
  - STBK - SETBACK
  - [T.D.] - TROLLEY DEPOT
  - [T.S.] - TROLLEY STOP
  - UE - UTILITY EASEMENT
  - => - VEHICULAR ACCESS
  - X - MODEL ROW
  - [ ] - OPEN SPACE
  - \* - FOCAL POINT

Amendments:

Zoning Stamps:

**PALM BEACH WEST ASSOCIATES I, LLLP**  
1600 SAWGRASS CORPORATE PKWY  
SUITE 400  
SUNRISE, FLORIDA 33323  
954-753-1730

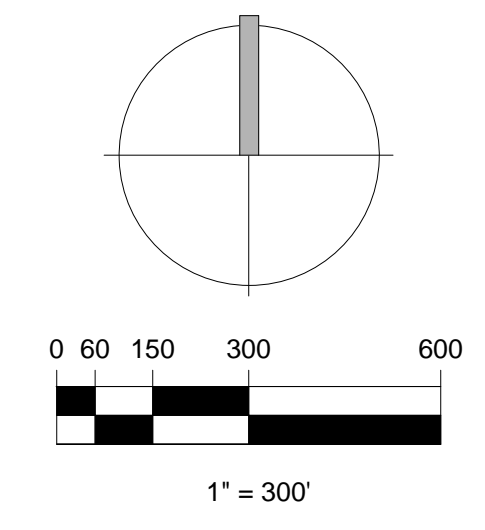
**Consultants:**  
**CIVIL ENGINEER**  
GLH Engineering, LLC  
1600 Sawgrass Corporate Pkwy  
Suite 400  
Sunrise, FL 33323  
954-753-1730  
**SURVEYOR**  
Sand and Hills Survey, Inc.  
8461 Lake Worth Road, Suite 410  
Lake Worth, FL 33467  
(561) 209-6048  
**TRAFFIC ENGINEER**  
Simmons and White  
5601 Corporate Way, Suite 200  
West Palm Beach, FL 33407  
(561) 478-7848  
**PLANNERS**  
Urban Design Kilday Studios  
610 Clematis Steert, Suit CU02  
West Palm Beach, FL 33401  
(561) 366-1100

**Project:**  
**INDIAN TRAILS GROVE - PUD**

Palm Beach County, Florida  
**Sheet title:**  
**PRELIMINARY Master Plan - Open Space Pod**

**Date:**  
**2015-07-15**

**Revisions:**  
2015-09-28 Resubmittal  
2016-01-25 Resubmittal  
2016-02-22 Resubmittal  
2016-05-23 Resubmittal  
2016-08-29 Resubmittal  
2016-09-26 Resubmittal  
2016-10-24 Resubmittal  
2016-11-28 Resubmittal  
2016-12-15 Resubmittal



**Sheet number:**  
**PMP-10**