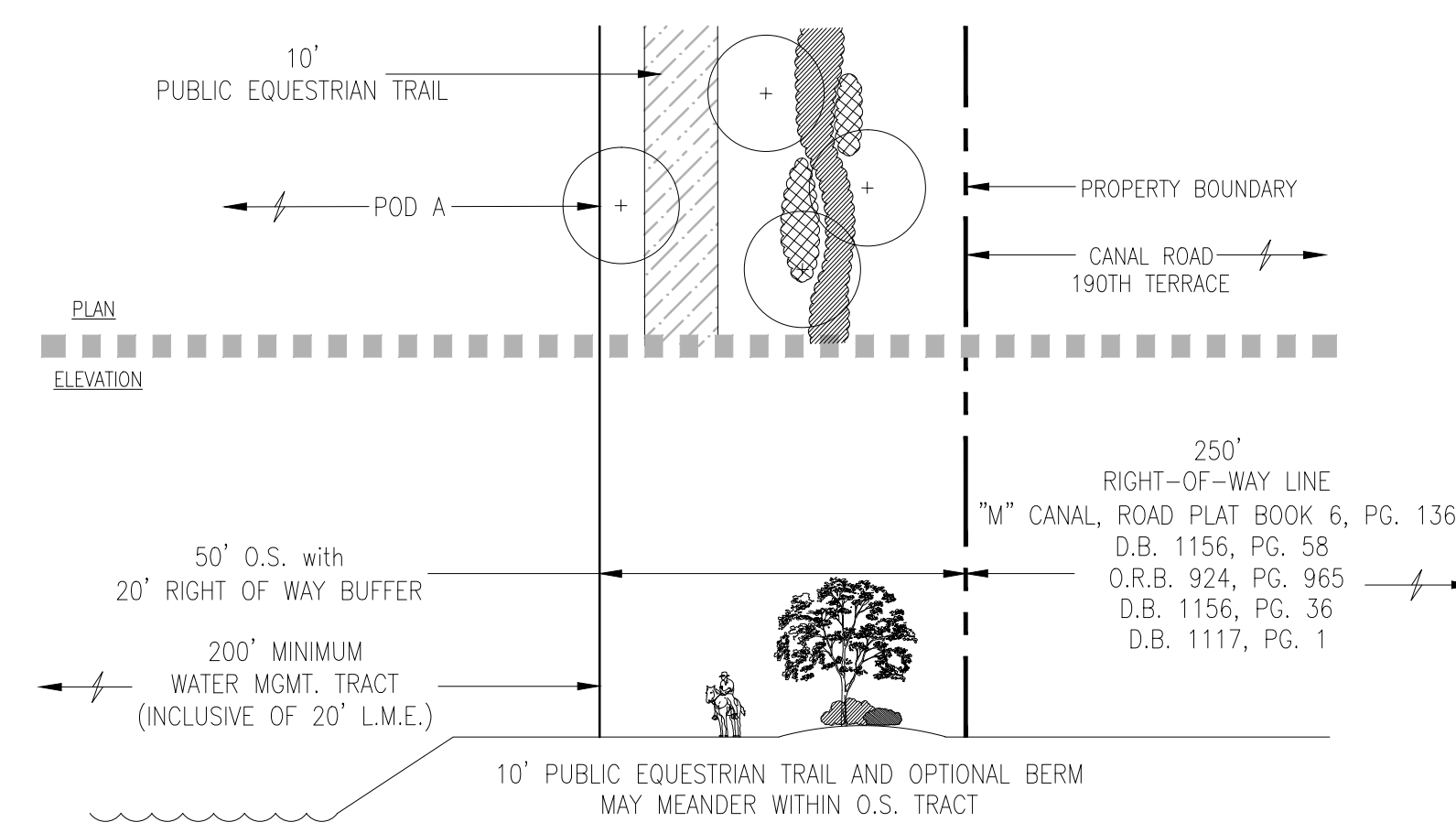
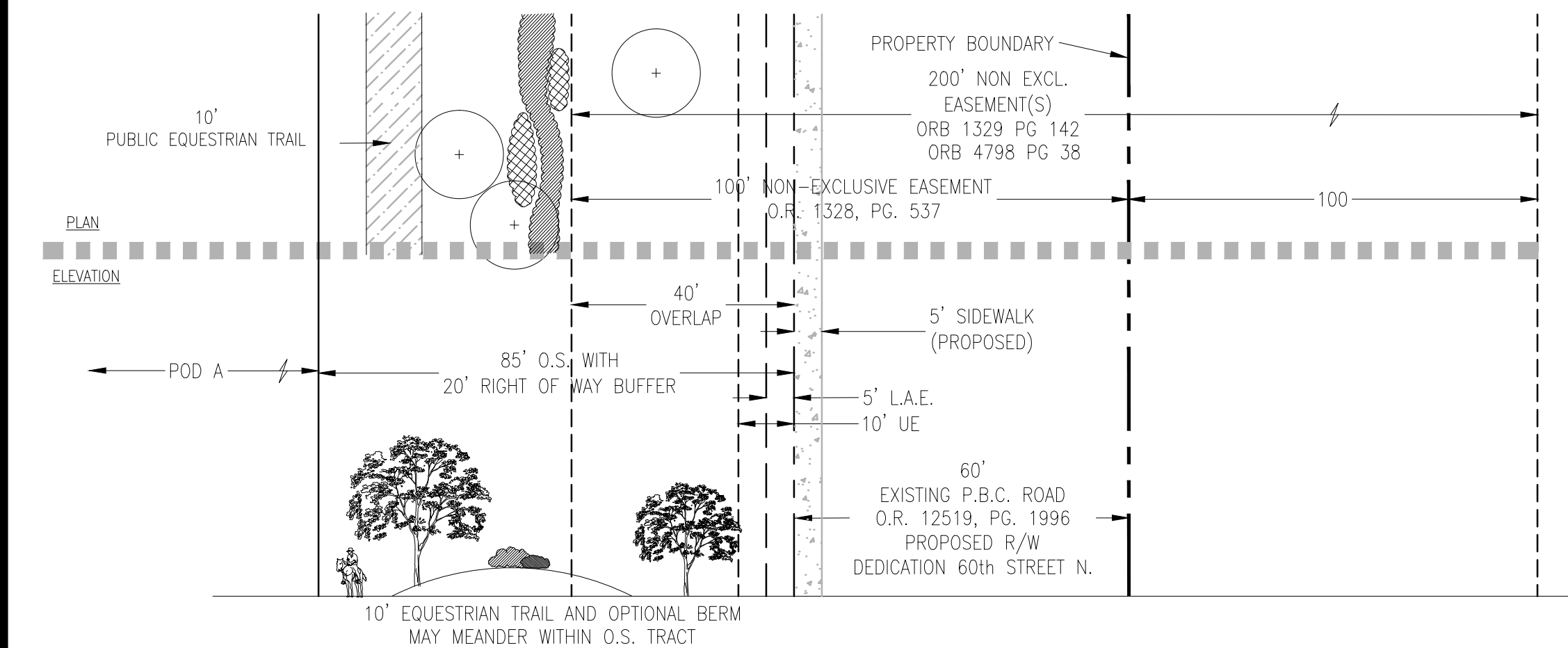


A - 85' O.S. with 50' Rural Parkway - 60th St. N. - POD A

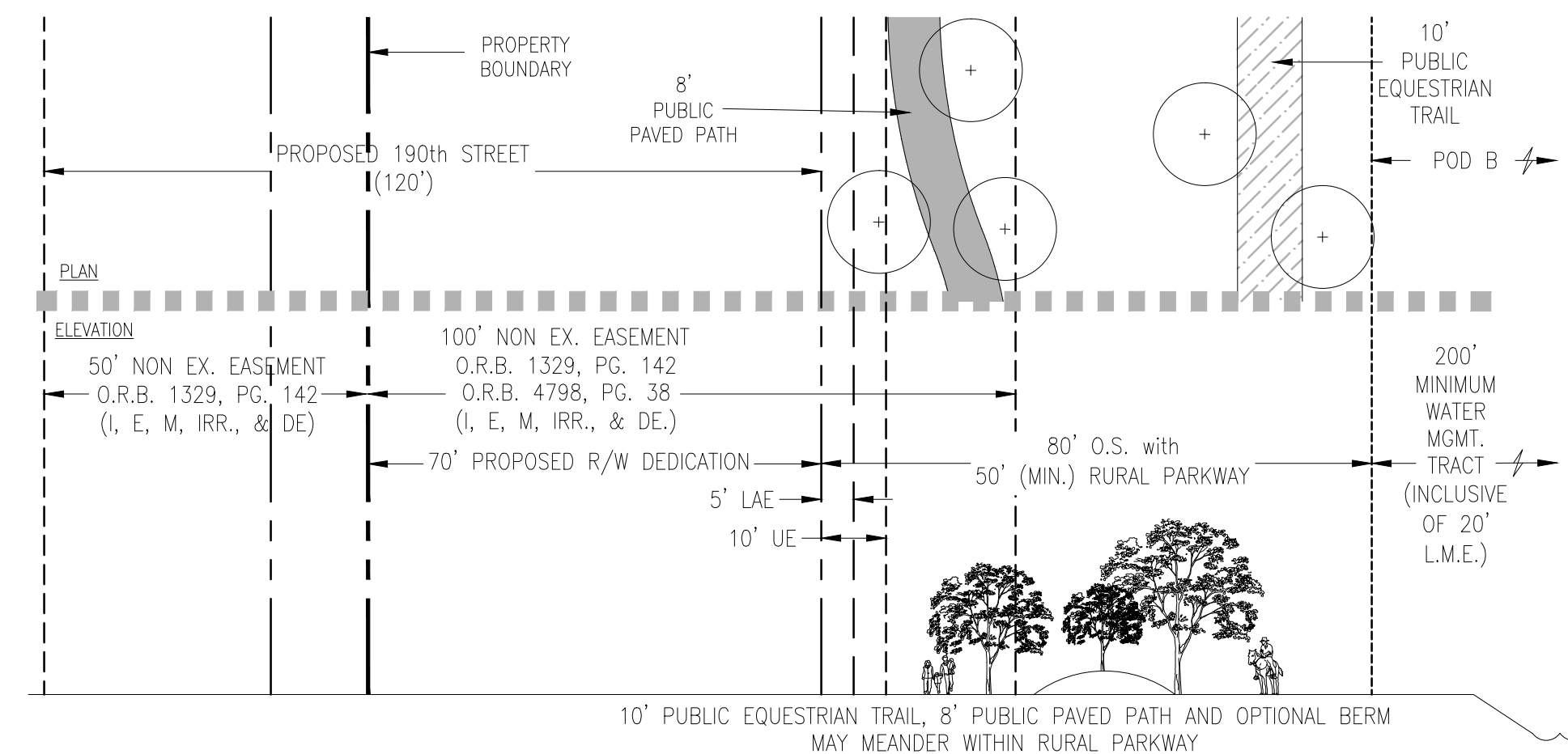


D - 50' O.S. with 20' R/W - 190th Terr. 'M' Canal - POD A

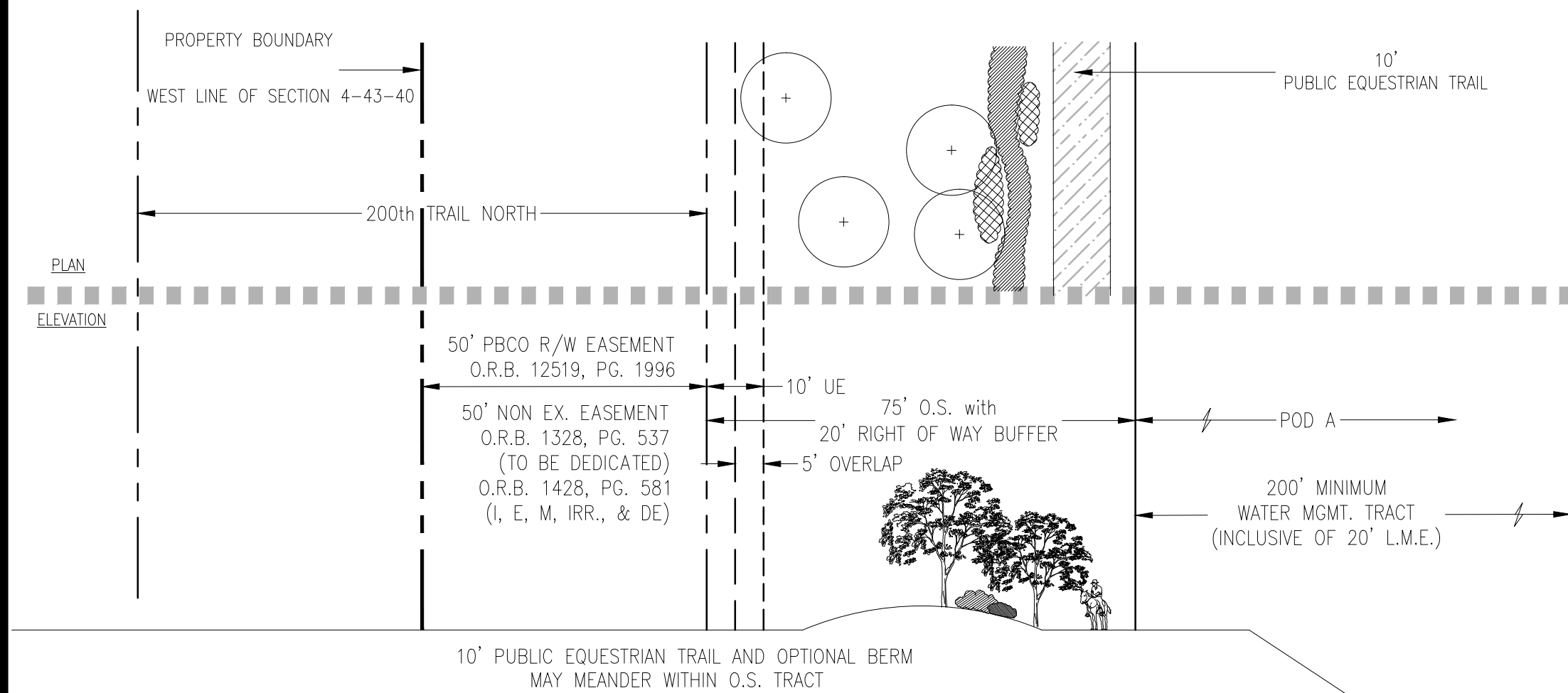
Planting Requirements - Buffer Sections
Notes:
 1. Landscape material, pedestrian path & equestrian trail planting within R/W Buffers & Incompatibility and Compatibility Buffers shall be (at a minimum) in accordance with Article 7, and may meander within O.S. tract.
 1. Planting within Rural Parkways shall be consistent with the conditions of approval included in the comprehensive plan amendment (LGA-2016-017) approved by BCC on September 22, 2016.



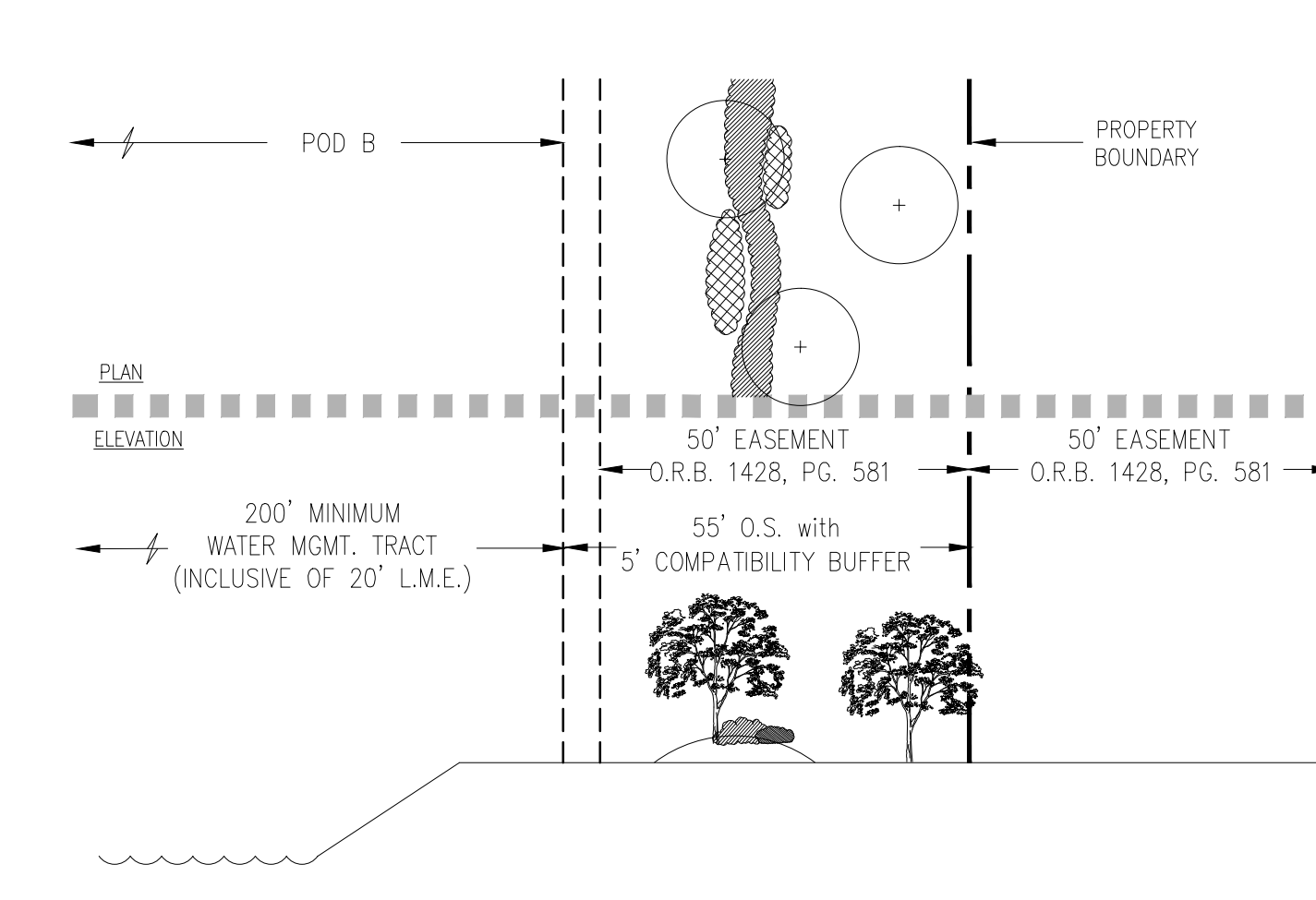
A.1 - 85' O.S. with 20' R/W Buffer - 60th St. N. - POD A



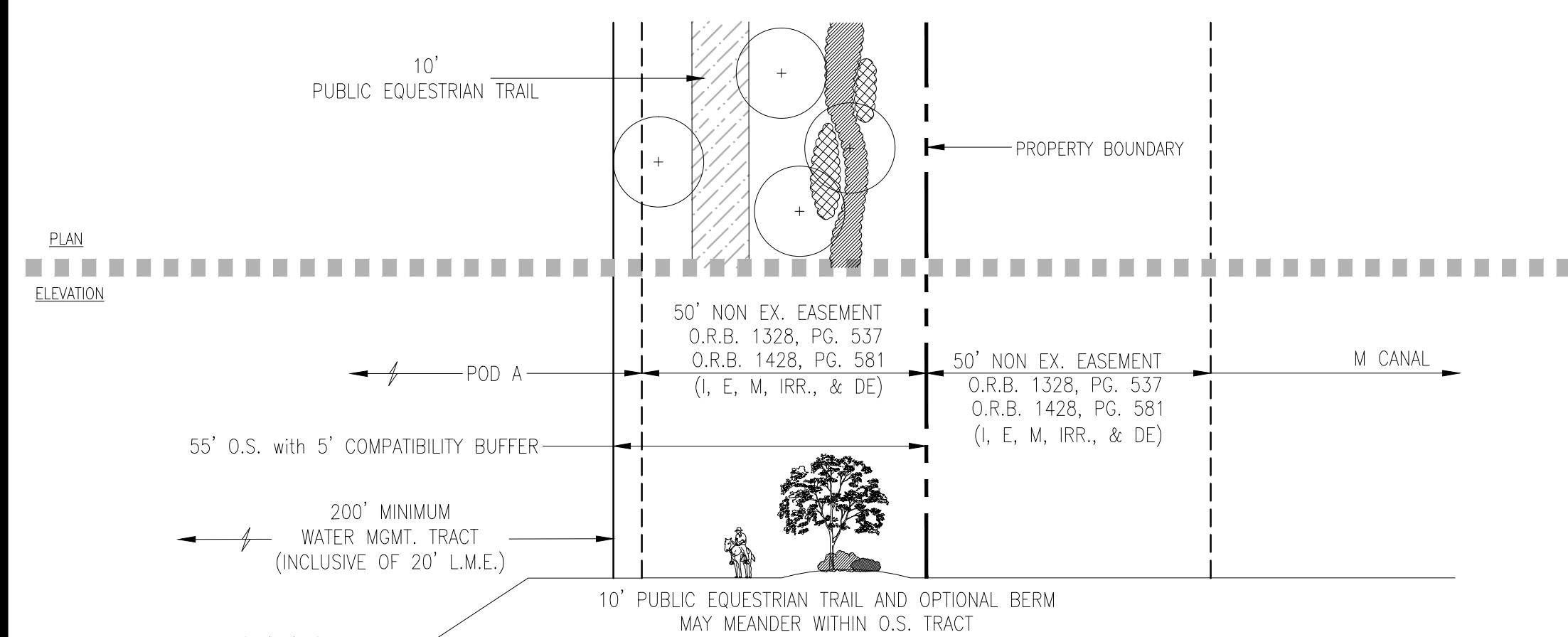
E - 80' O.S. with 50' Rural Parkway - 190th St. - POD B



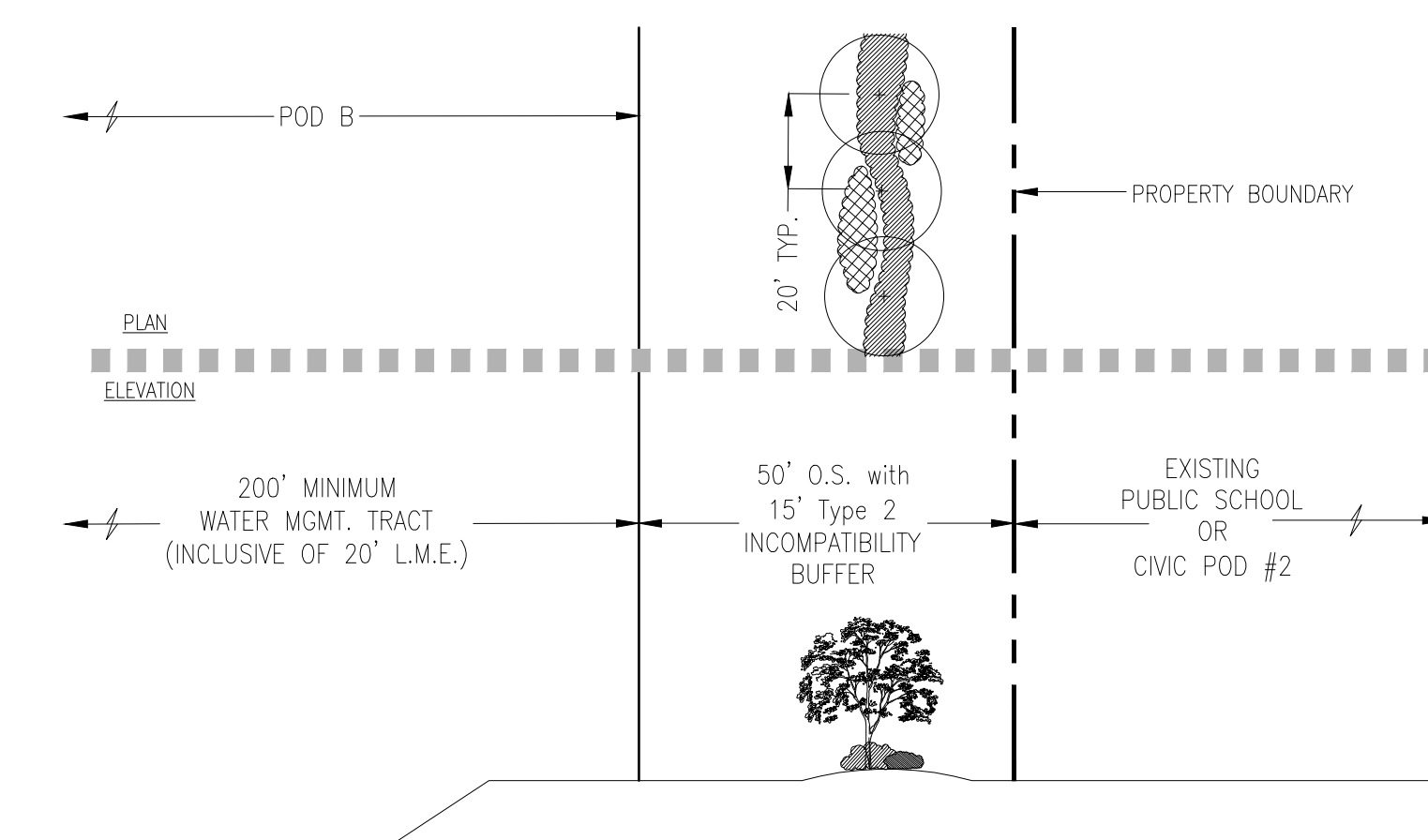
B - 75' O.S. with 20' R/W Buffer- East side of 50' R/W 200th Trail North - POD A (Existing Dirt Road)



F - 55' O.S. with 5' Compatibility Buffer - POD B South



C - 55' O.S. with 5' Compatibility Buffer - POD A South



G - 50' O.S. with 15' Type 2 Incompatibility Buffer - POD B East

PALM BEACH WEST ASSOCIATES I, LLLP
 1600 SAWGRASS CORPORATE PKWY SUITE 400
 SUNRISE, FLORIDA 33323
 954-753-1730

Consultants:
CIVIL ENGINEER
 GLH Engineering, LLC
 1600 Sawgrass Corporate Pkwy Suite 400
 Sunrise, FL 33323
 954-753-1730
SURVEYOR
 Sand and Hills Survey, Inc.
 8461 Lake Worth Road, Suite 410
 Lake Worth, FL 33467
 (561) 209-6048
TRAFFIC ENGINEER
 Simmons and White
 2581 Metrocentre Blvd. Suite 3
 West Palm Beach, FL 33407
 (561) 478-7848
PLANNERS
 Urban Design Kilday Studios
 610 Clematis Street, Suite CU02
 West Palm Beach, FL 33401
 (561) 366-1100

Project:
INDIAN TRAILS GROVE - PUD

Palm Beach County, Florida
Sheet title:
PRELIMINARY Regulating Plan

Date:
2015-07-15

Revisions:
 2015-09-28 Resubmittal
 2016-01-25 Resubmittal
 2016-02-22 Resubmittal
 2016-05-23 Resubmittal
 2016-08-29 Resubmittal
 2016-09-26 Resubmittal
 2016-10-24 Resubmittal

Amendments:

Zoning Stamps:

Sheet number:
PRP-2