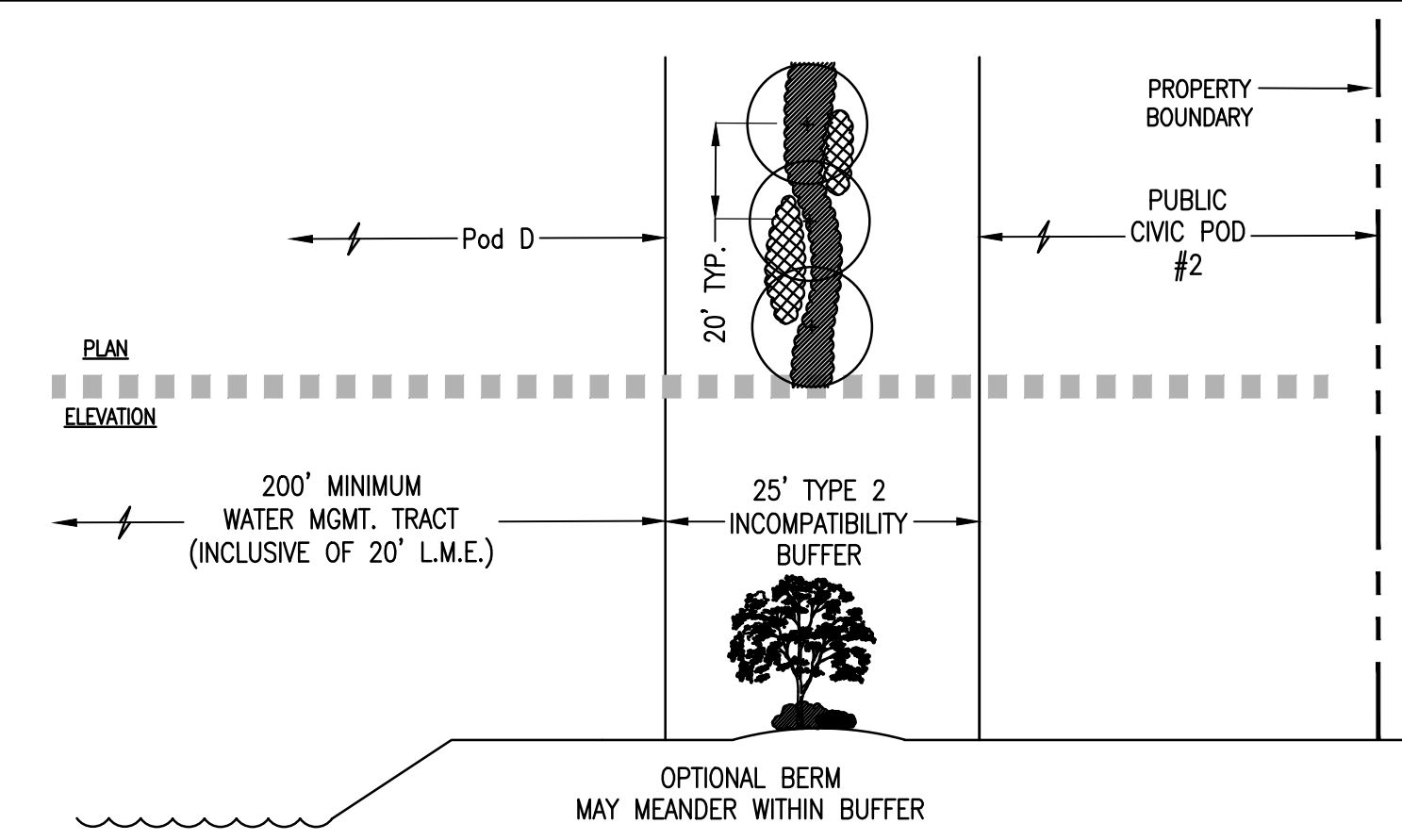


Section G - 50' Type 2 Incompatibility Buffer
 Planting for this buffer shall consist of:

- Canopy trees 20' on center.
- A minimum 6' ht. continuous solid opaque visual screen composed of hedges or shrubs, either alone or in combination with a wall, fence and/or berm. A wall counts as 1 layer of planting; however, a wall shall require a continuous hedge along both sides of the wall and shall then satisfy the shrub planting requirement in lieu of the following:
- For each 100 linear feet of buffer length the following plants shall be provided:

- 25 large shrubs (36" ht) spaced 48" oc minimum
- 25 medium shrubs (24" ht) spaced 30" oc minimum
- 50 small shrubs (18" ht) spaced 24" oc minimum
- 200 ground cover (6" ht) plants

H - 50' Type 2 Incompatibility Buffer

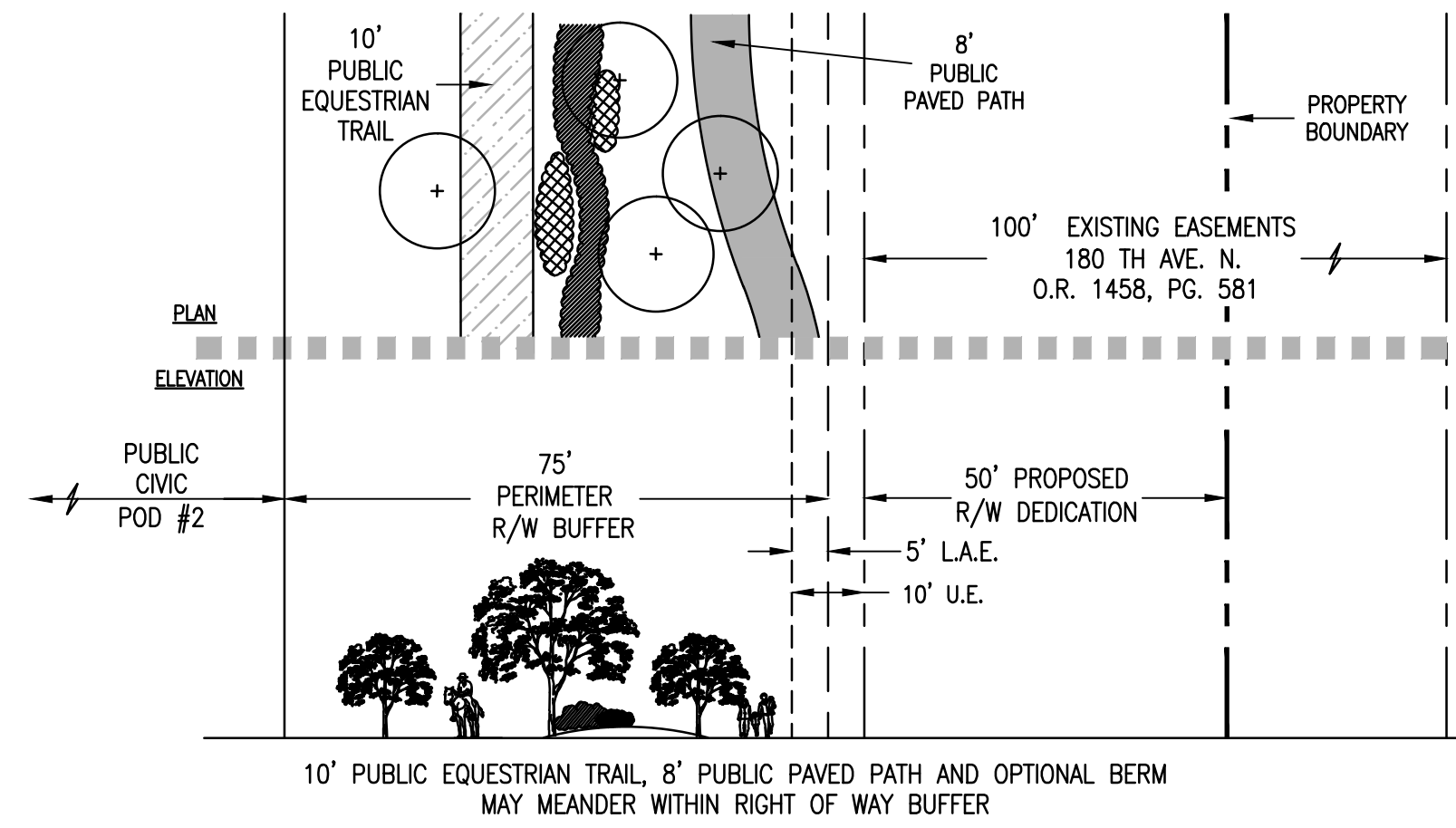


Section J.2 - 25' Type 2 Incompatibility Buffer
 Planting for this buffer shall consist of:

- Canopy trees 20' on center.
- A minimum 6' ht. continuous solid opaque visual screen composed of hedges or shrubs, either alone or in combination with a wall, fence and/or berm. A wall counts as 1 layer of planting; however, a wall shall require a continuous hedge along both sides of the wall and shall then satisfy the shrub planting requirement in lieu of the following:
- For each 100 linear feet of buffer length the following plants shall be provided:

- 25 large shrubs (36" ht) spaced 48" oc minimum
- 25 medium shrubs (24" ht) spaced 30" oc minimum
- 50 small shrubs (18" ht) spaced 24" oc minimum
- 200 ground cover (6" ht) plants

J.2 - 25' Type 2 Incompatibility Buffer

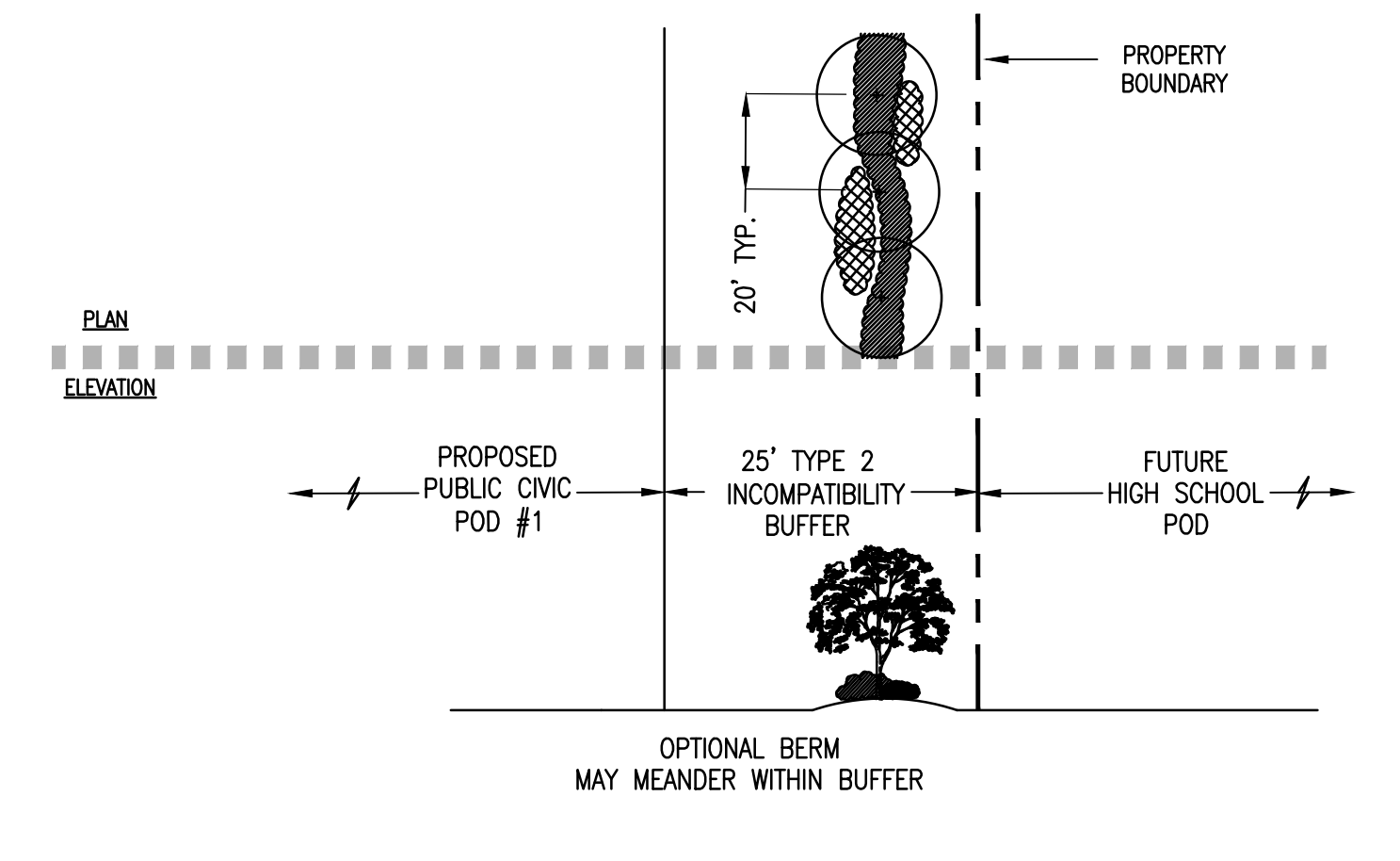


Section I - 75' Perimeter Right of Way Buffer
 Planting for this buffer shall consist of:

- A minimum 2' ht. continuous opaque visual screen composed of planting alone or in combination with a fence/wall/berm.
- 1 Canopy tree per 25 linear feet.
- For each 100 linear feet of buffer length the following plants shall be provided:

- 25 large shrubs (36" ht) spaced 48" oc minimum
- 25 medium shrubs (24" ht) spaced 30" oc minimum
- 50 small shrubs (18" ht) spaced 24" oc minimum
- 200 ground cover (6" ht) plants

I - 75' Perimeter R/W Buffer - 180th at Public Civic Pod #2

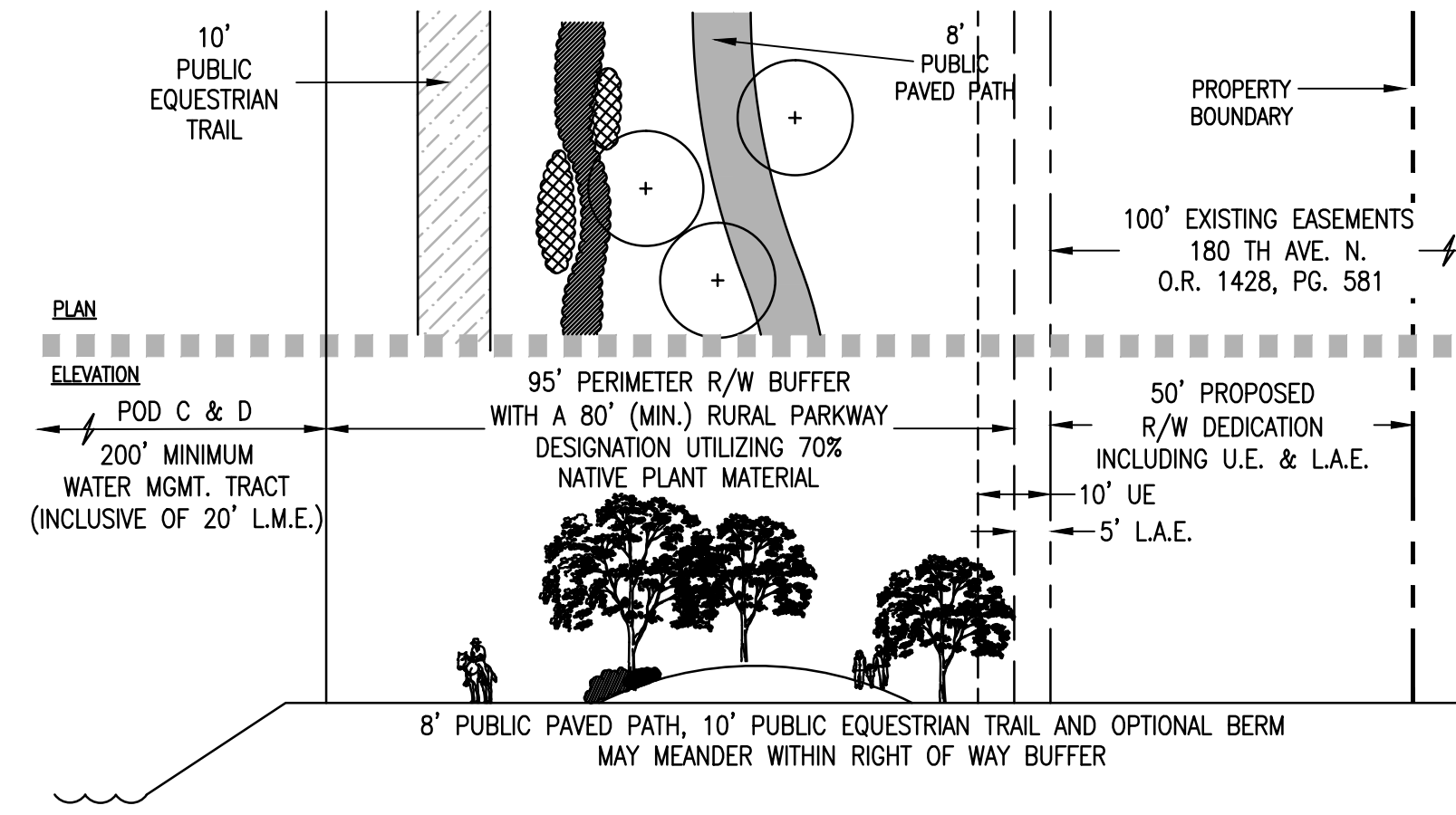


Section J.3 - 25' Type 2 Incompatibility Buffer
 Planting for this buffer shall consist of:

- Canopy trees 20' on center.
- A minimum 6' ht. continuous solid opaque visual screen composed of hedges or shrubs, either alone or in combination with a wall, fence and/or berm. A wall counts as 1 layer of planting; however, a wall shall require a continuous hedge along both sides of the wall and shall then satisfy the shrub planting requirement in lieu of the following:
- For each 100 linear feet of buffer length the following plants shall be provided:

- 25 large shrubs (36" ht) spaced 48" oc minimum
- 25 medium shrubs (24" ht) spaced 30" oc minimum
- 50 small shrubs (18" ht) spaced 24" oc minimum
- 200 ground cover (6" ht) plants

J.3 - 25' Type 2 Incompatibility Buffer

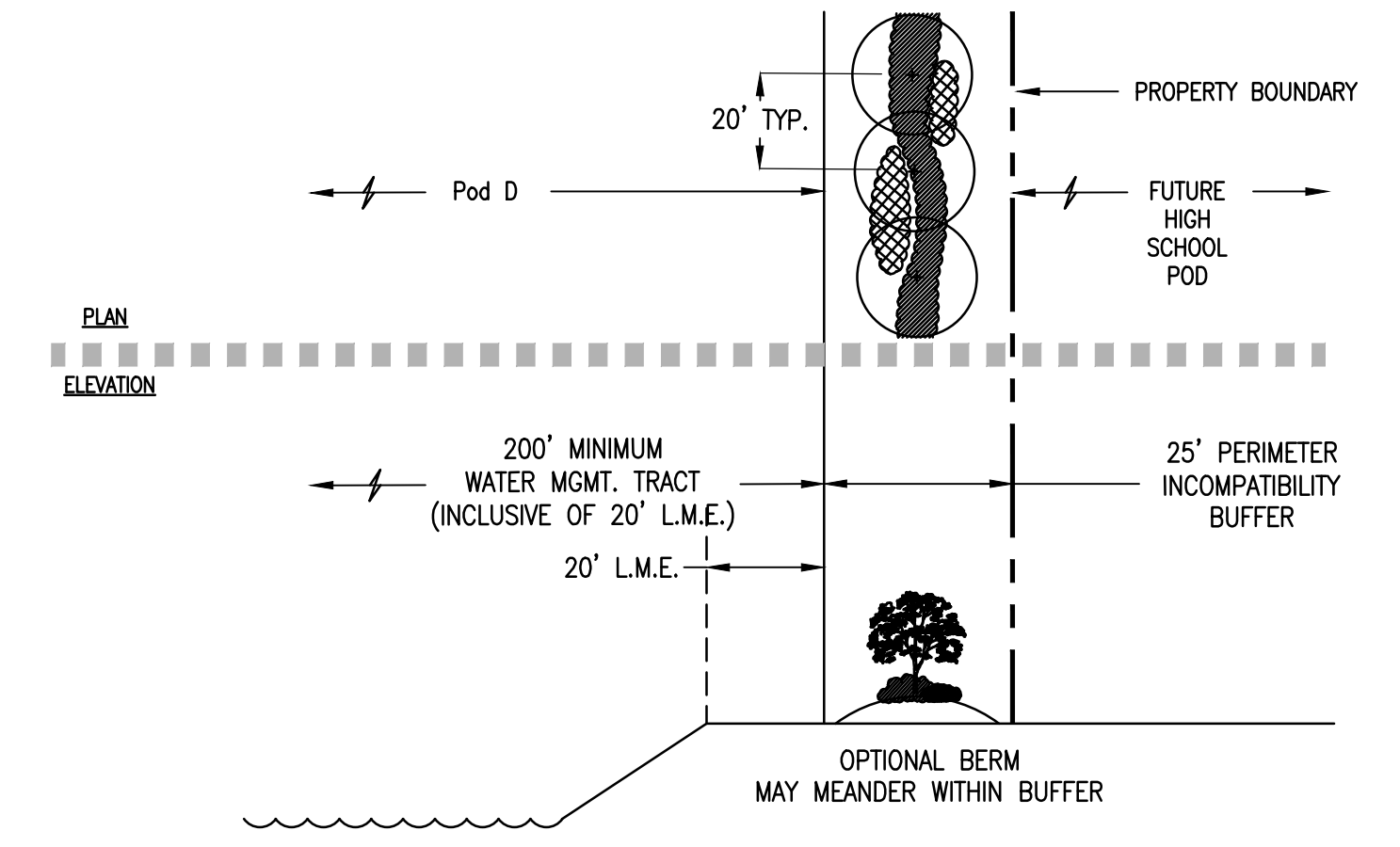


Section J - 95' Perimeter Right of Way Buffer
 Planting for this buffer shall consist of:

- A minimum 2' ht. continuous opaque visual screen composed of planting alone or in combination with a fence/wall/berm.
- 1 Canopy tree per 25 linear feet.
- For each 100 linear feet of buffer length the following plants shall be provided:

- 25 large shrubs (36" ht) spaced 48" oc minimum
- 25 medium shrubs (24" ht) spaced 30" oc minimum
- 50 small shrubs (18" ht) spaced 24" oc minimum
- 200 ground cover (6" ht) plants

J - 95' Perimeter R/W Buffer - 180th along Pods C & D

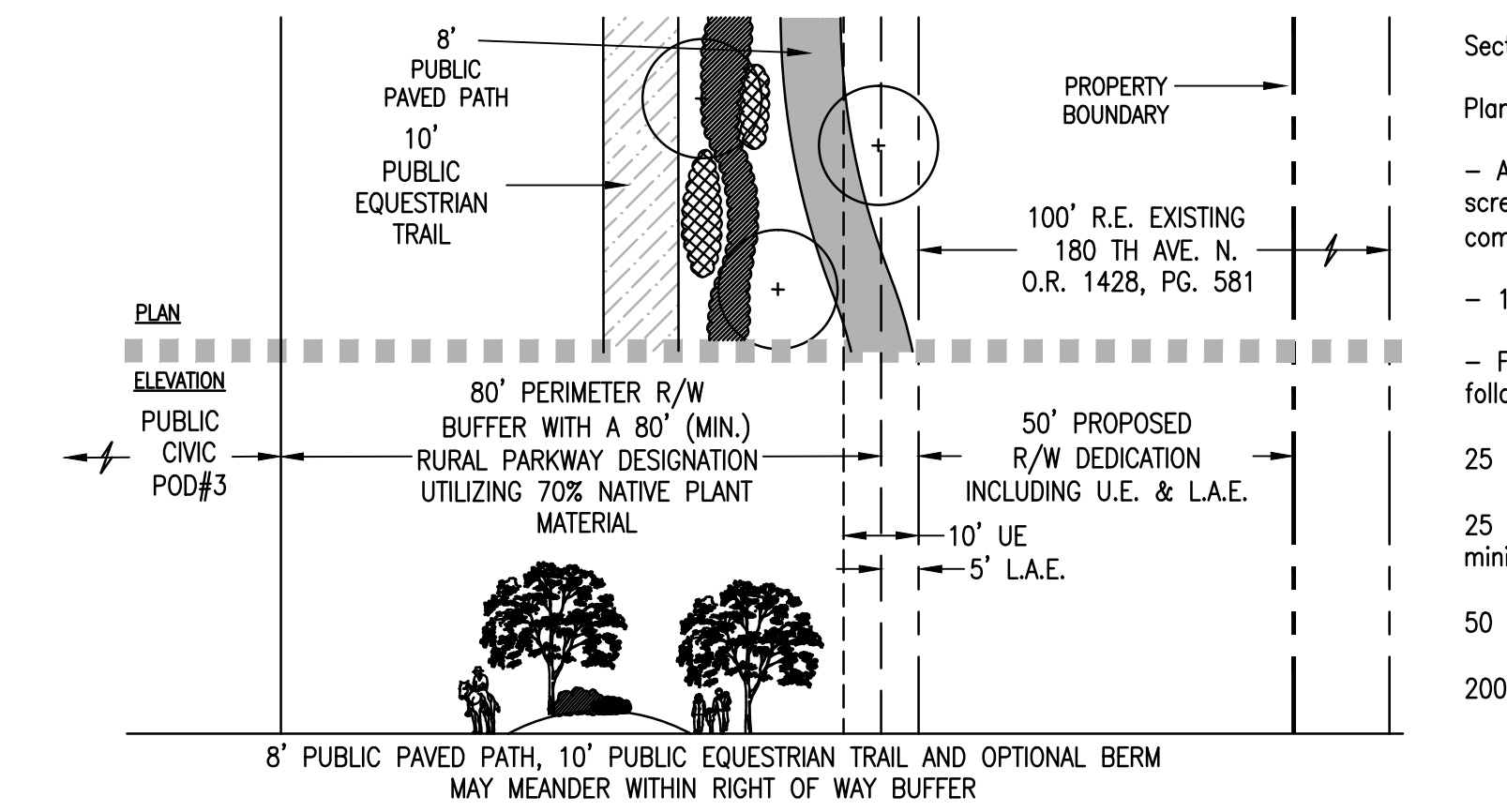


Section K - 25' Perimeter 2 Incompatibility Buffer
 Planting for this buffer shall consist of:

- Canopy trees 20' on center.
- A minimum 6' ht. continuous solid opaque visual screen composed of hedges or shrubs, either alone or in combination with a wall, fence and/or berm. A wall counts as 1 layer of planting; however, a wall shall require a continuous hedge along both sides of the wall and shall then satisfy the shrub planting requirement in lieu of the following:
- For each 100 linear feet of buffer length the following plants shall be provided:

- 25 large shrubs (36" ht) spaced 48" oc minimum
- 25 medium shrubs (24" ht) spaced 30" oc minimum
- 50 small shrubs (18" ht) spaced 24" oc minimum
- 200 ground cover (6" ht) plants

K - 25' Perimeter Incompatibility Buffer

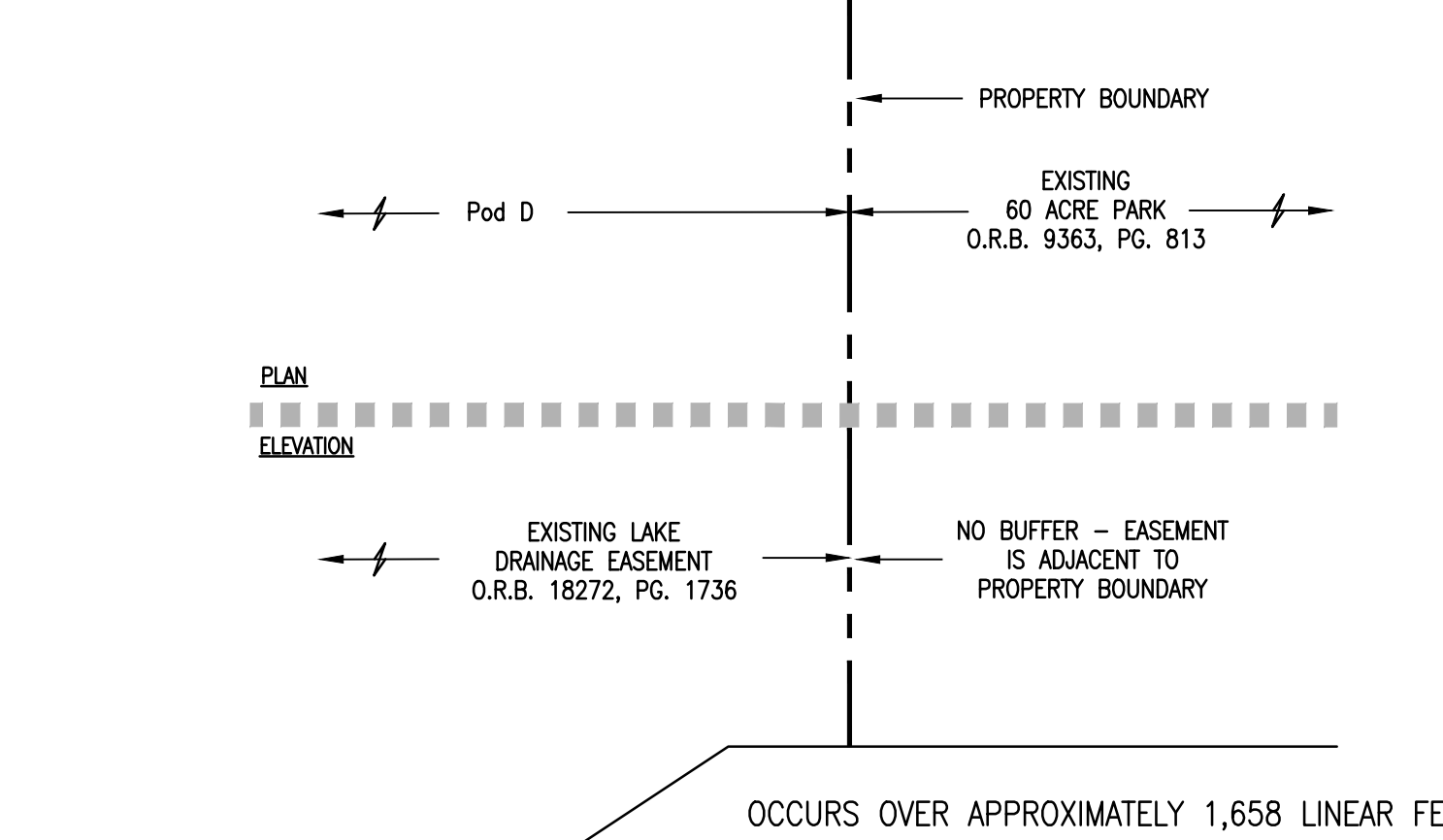


Section J.1 - 80' Perimeter Right of Way Buffer
 Planting for this buffer shall consist of:

- A minimum 2' ht. continuous opaque visual screen composed of planting alone or in combination with a fence/wall/berm.
- 1 Canopy tree per 25 linear feet.
- For each 100 linear feet of buffer length the following plants shall be provided:

- 25 large shrubs (36" ht) spaced 48" oc minimum
- 25 medium shrubs (24" ht) spaced 30" oc minimum
- 50 small shrubs (18" ht) spaced 24" oc minimum
- 200 ground cover (6" ht) plants

J.1 - 80' Perimeter R/W Buffer - 180th at Public Civic Pod #3



Section L - No Buffer
 Occurs over approximately 1,658 linear feet.

L - No Buffer

PALM BEACH WEST ASSOCIATES I, LLLP
 1600 SAWGRASS CORPORATE PKWY SUITE 400
 SUNRISE, FLORIDA 33323
 954-753-1730

Consultants:
CIVIL ENGINEER
 GLH Engineering, LLC
 1600 Sawgrass Corporate Pkwy Suite 400
 Sunrise, FL 33323
 954-753-1730
SURVEYOR
 Sand and Hills Survey, Inc.
 8461 Lake Worth Road, Suite 410
 Lake Worth, FL 33467
 (561) 209-6048
TRAFFIC ENGINEER
 Simmons and White
 2581 Metrocentre Blvd, Suite 3
 West Palm Beach, FL 33407
 (561) 478-7848
PLANNERS
 Urban Design Kilday Studios
 610 Clematis Street, Suite CU02
 West Palm Beach, FL 33401
 (561) 366-1100

Project:
INDIAN TRAILS GROVE - PUD

Palm Beach County, Florida
 Sheet title:
PRELIMINARY Regulating Plan

Date:
2015-07-15

Revisions:
 2015-09-28 Resubmittal
 2016-01-25 Resubmittal
 2016-02-22 Resubmittal
 2016-05-23 Resubmittal

Amendments:

Zoning Stamps:

Sheet number:
PRP-3