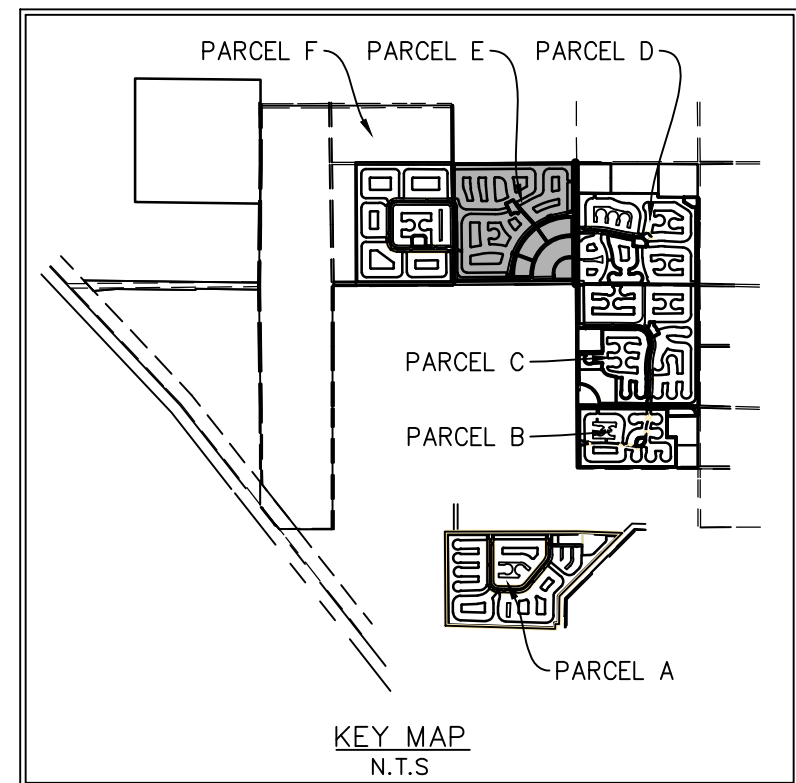
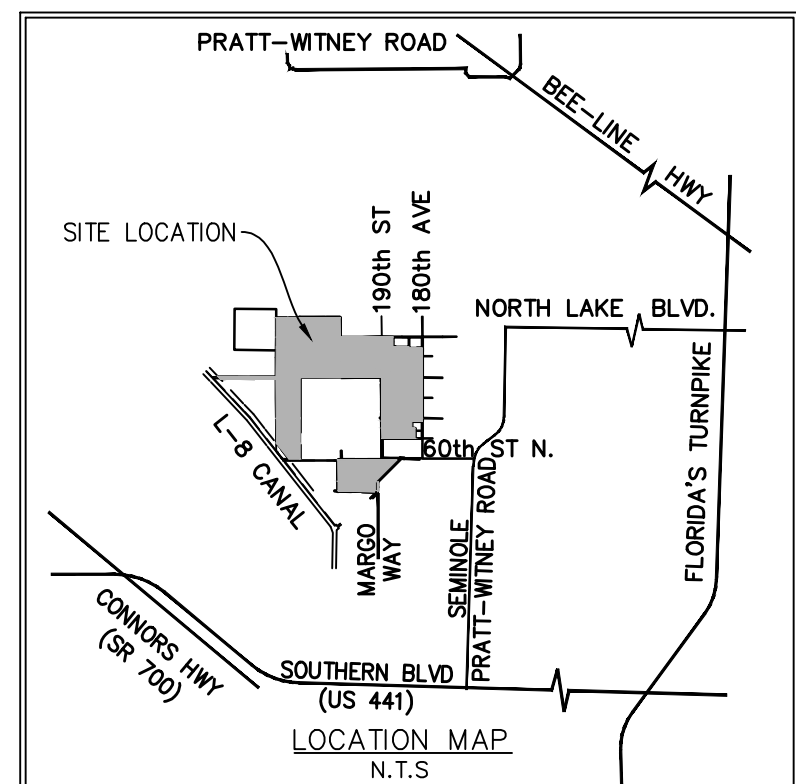


- LEGEND**
- AC - ACRES
 - AG - ABOVE GRADE
 - AP - AGRICULTURAL PRODUCTION
 - AR - AGRICULTURAL RESIDENTIAL
 - BE - BUFFER EASEMENT
 - DE - DRAINAGE EASEMENT
 - CON - CONSERVATION
 - DU - DWELLING UNIT
 - C.B. - COMPATIBILITY BUFFER
 - I.B. - INCOMPATIBILITY BUFFER
 - ITID - INDIAN TRAILS IMPROVEMENT DISTRICT
 - LME - LAKE MAINTENANCE ESMT.
 - OS - OPEN SPACE
 - PDD - PLANNED DEVELOPMENT DISTRICT
 - ROW OR RW - RIGHT OF WAY
 - RR - RURAL RESIDENTIAL
 - STBK - SETBACK
 - UE - UTILITY EASEMENT
 - L.A.E. - LIMITED ACCESS EASEMENT
 - L.S.E. - LIFT STATION EASEMENT
 - S.B.S. - SCHOOL BUS SHELTER
 - O.R.B. - OFFICIAL RECORD BOOK
 - P.T.S. - PALM TRAN BUS STOP
 - - OPEN SPACE
 - ★ - FOCAL POINT



Parcel E		Parcel E	
Lake No.	Acres	Site Area Breakdown	Acres
32	14.15	Net Development Area	289.00
33	13.47	Recreation Pod	5.25
34	3.46	Entrance / Spine Road	14.84
35	12.61	Misc. Open Space	23.09
36	10.00	Civic Pod #5	15.46
37	20.39	Civic Pod #6	22.64
38	6.69	Civic Pod #7	25.03
39	6.78	Commercial Pod #3	16.090
40	10.70	Perimeter Landscape Buffers	46.32
41	6.92	Lakes	161.67
42	40.19	Proposed R/W Dedication	15.61
43	4.14		
44	6.38		
45	5.81		
Total	161.67		

R/W Dedication		Acres
Indian Trails Blvd.		9.569
190th Street		6.044
Total		15.613

Open Space - Parcel E		Acres
Lake Tracts		161.67
Recreation Pod		5.25
Misc. Open Space		23.09
Perimeter Landscape Buffers		46.32
Total Provided		236.33

Recreation Required (.006 per unit) x 859		Acres
Rec Required - Parcel E		5.15
Rec Provided - Parcel E (Gross)		5.25

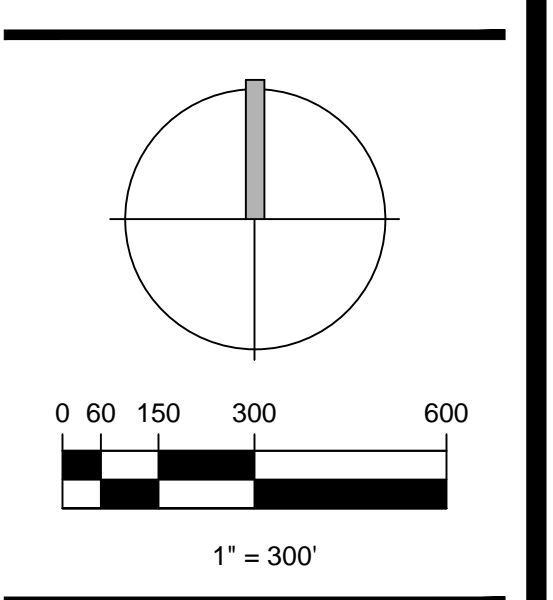
Parcel E	Acres	Units	Type	Density
Pod E-1	39.583	48	ZLL	4.62
		135	TH	
Pod E-2	142.663	327	ZLL	2.29
Pod E-3	65.340	168	ZLL	2.57
Pod E-4	124.794	181	SF	1.45
Total		859		

PALM BEACH WEST ASSOCIATES I, LLLP
 1600 SAWGRASS CORPORATE PKWY
 SUITE 400
 SUNRISE, FLORIDA 33323
 954-753-1730

Consultants:
CIVIL ENGINEER
 GLH Engineering, LLC
 1600 Sawgrass Corporate Pkwy
 Suite 400
 Sunrise, FL 33323
 954-753-1730
SURVEYOR
 Sand and Hills Survey, Inc.
 8461 Lake Worth Road, Suite 410
 Lake Worth, FL 33467
 (561) 209-6048
TRAFFIC ENGINEER
 Simmons and White
 5601 Corporate Way, Suite 200
 West Palm Beach, FL 33407
 (561) 478-7848
PLANNERS
 Urban Design Kilday Studios
 477 S. Rosemary, Suite 225
 West Palm Beach, FL 33401
 (561) 366-1100

Project:
INDIAN TRAILS GROVE - PUD
 Palm Beach County, Florida
 Sheet title:
PRELIMINARY Master Plan - Parcel E

Date:
2015-07-15
Revisions:
 2015-09-28 Resubmittal
 2016-01-25 Resubmittal
 2016-02-22 Resubmittal



Sheet number:
PMP-6

NOTE: POD ENTRY SIGNS WILL BE PROVIDED AND SHOWN ON FINAL MASTER PLAN AS OUTLINED ON THE PMP-1