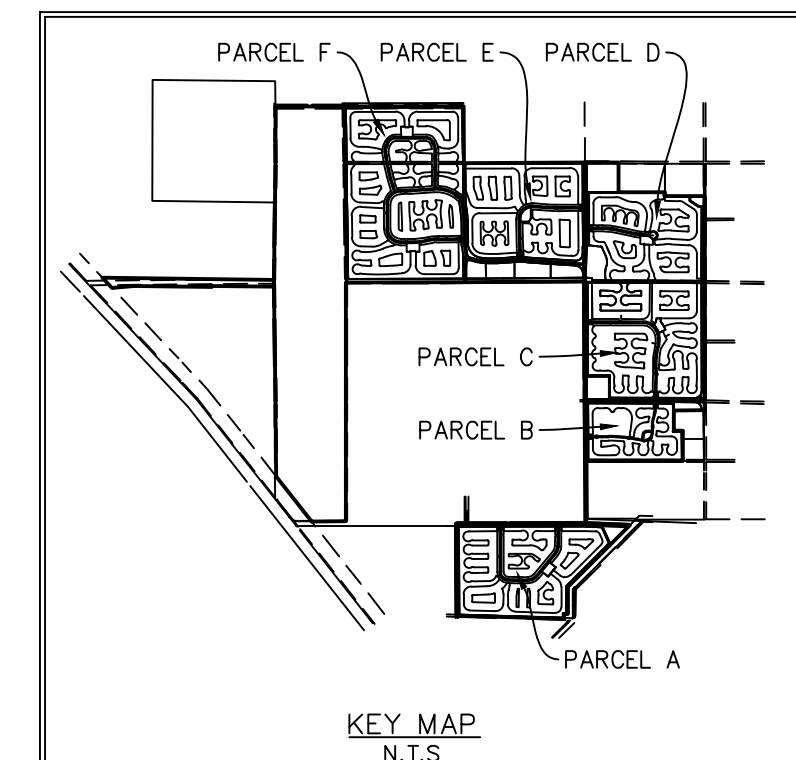
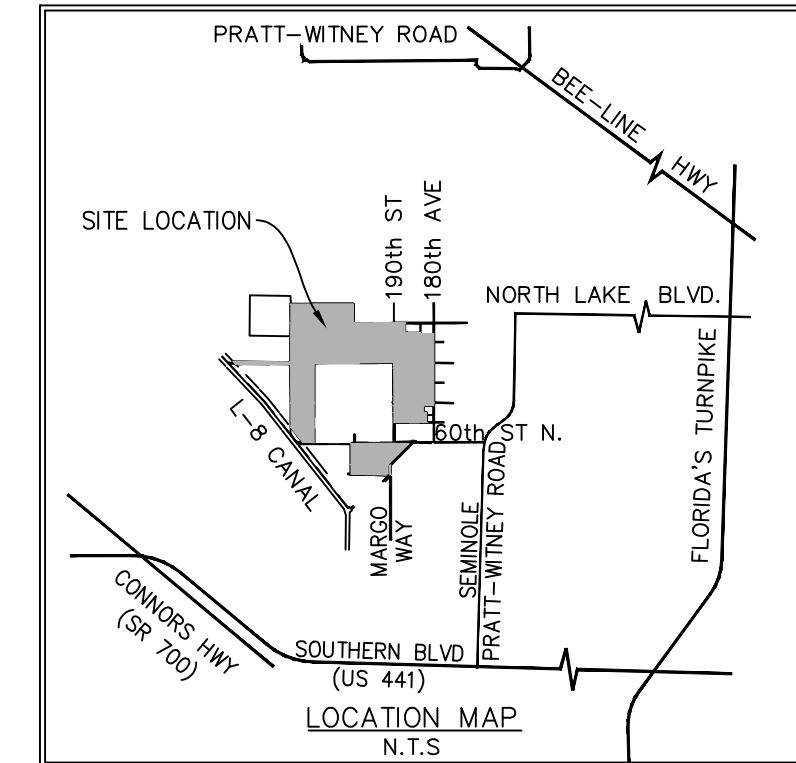
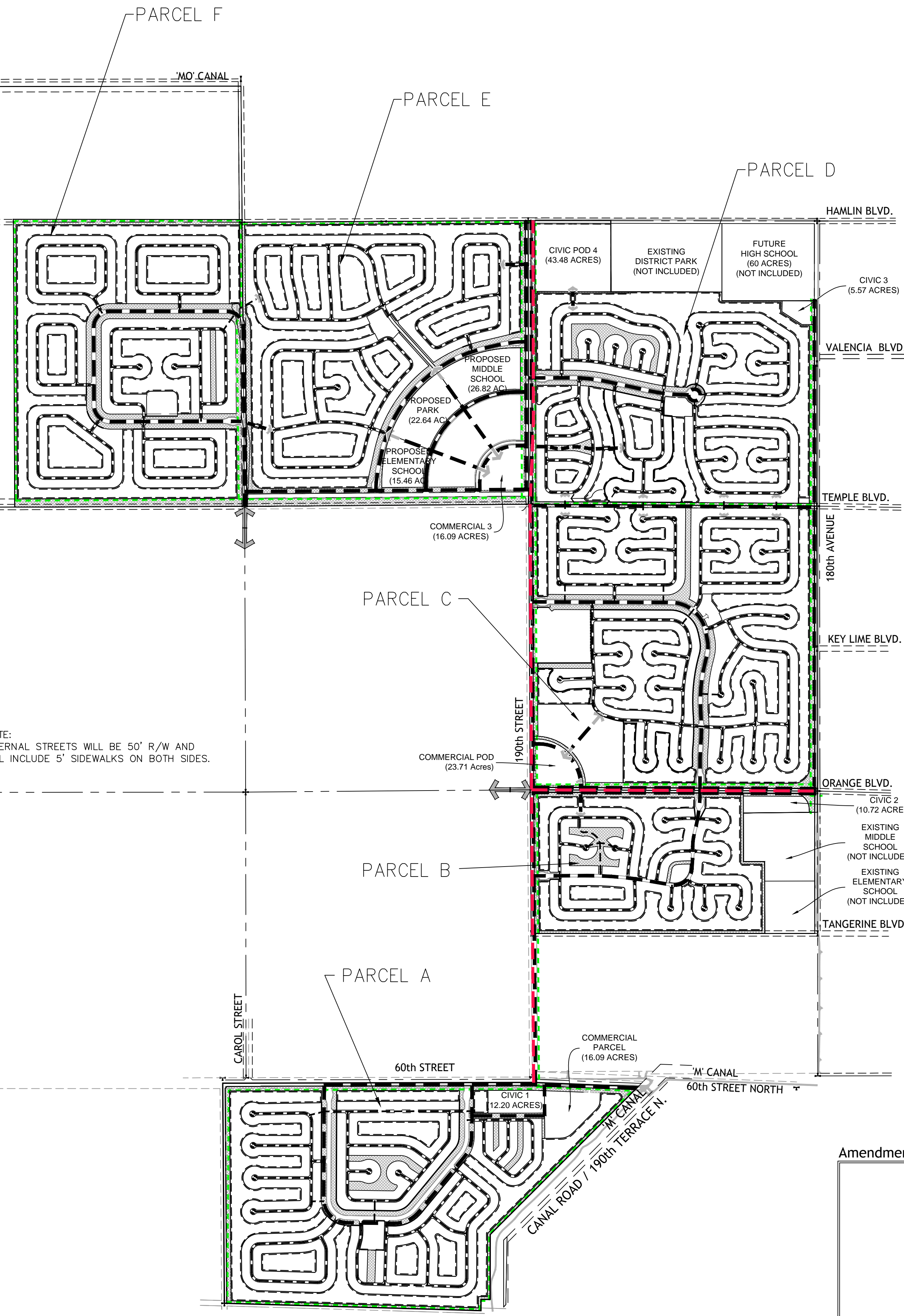


INDIAN TRAILS IMPOUNDMENT AREA (NOT INCLUDED)

OPEN SPACE (1,707.931 acres)

NOTE:
INTERNAL STREETS WILL BE 50' R/W AND
WILL INCLUDE 5' SIDEWALKS ON BOTH SIDES.



LEGEND - STREET LAYOUT PLAN

- STREET SYSTEM
- PEDESTRIAN PATHWAY
- EQUESTRIAN TRAIL
- RURAL PARKWAY

Indian Trail Groves

	Streets	Cul-de-Sacs	%	Focal Points
Pod A	18	9	50.00%	3
Pod B (1)	13	10	76.92%	2
Pod C	28	25	89.29%	4
Pod D	17	11	64.71%	3
Pod E	20	11	55.00%	3
Pod F	36	20	55.56%	5
Project	132	86	65.15%	20

Notes:
1) Pod B - 12 Cul-de-sacs included. Pedestrian connection between 2 cul-de-sacs = 10 counted

Amendments:

Zoning Stamps:

PALM BEACH WEST ASSOCIATES I, LLLP
1600 SAWGRASS CORPORATE PKWY
SUITE 400
SUNRISE, FLORIDA 33323
954-753-1730

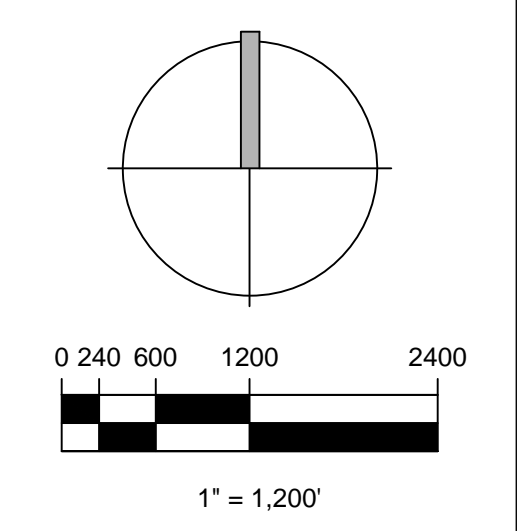
Consultants:
CIVIL ENGINEER
GLH Engineering, LLC
1600 Sawgrass Corporate Pkwy
Suite 400
Sunrise, FL 33323
954-753-1730
SURVEYOR
Sand and Hills Survey, Inc.
8461 Lake Worth Road, Suite 410
Lake Worth, FL 33467
(561) 209-6048
TRAFFIC ENGINEER
Simmons and White
2581 Metrocentre Blvd, Suite 3
West Palm Beach, FL 33407
(561) 478-7848
PLANNERS
Urban Design Kilday Studios
610 Clematis Street, Suite CU02
West Palm Beach, FL 33401
(561) 366-1100

Project:
INDIAN TRAILS GROVE - PUD

Palm Beach County, Florida
Sheet title:
PRELIMINARY Equestrian/Pedestrian /Street Layout

Date:
2015-07-15

Revisions:
2015-09-28 Resubmittal
2016-01-25 Resubmittal
2016-02-22 Resubmittal



Sheet number:
PMP-11