

LAND USE MIX				
High Density residential				
Unit Type	Land Area		Net Density DU/Acre	
	Min. Acres	Max. Acres	Min.	Max.
High Density 1 (ZLL & TH)	62	94	5.00	7.00
High Density 2 (ZLL)	65	98	3.00	5.00
Medium Density residential				
Unit Type	Land Area		Net Density DU/Acre	
	Min. Acres	Max. Acres	Min.	Max.
ZLL & SF	346	519	2.00	4.00
Low Density residential				
Unit Type	Land Area		Net Density DU/Acre	
	Min. Acres	Max. Acres	Min.	Max.
SF	942	1413	1.00	3.00
Open Space				
Total Required Open Space	Min. %	Max. %		
	66.67%	80.00%		
Exterior Open Space	Min. %	Max. %		
	50.00%	70.00%		
Civic Requirement				
Total Civic	Min. %	Max. %		
	2.00%	4.00%		
Commercial Requirement				
Total Commercial	Min. Acres	Max. Acres		
	47	56		
Recreation Requirement				
(3943 Residential Units)	Min. Acres	Max. Acres		
	.006 acres per unit	24	65	

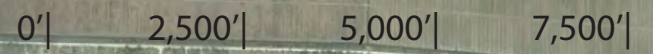
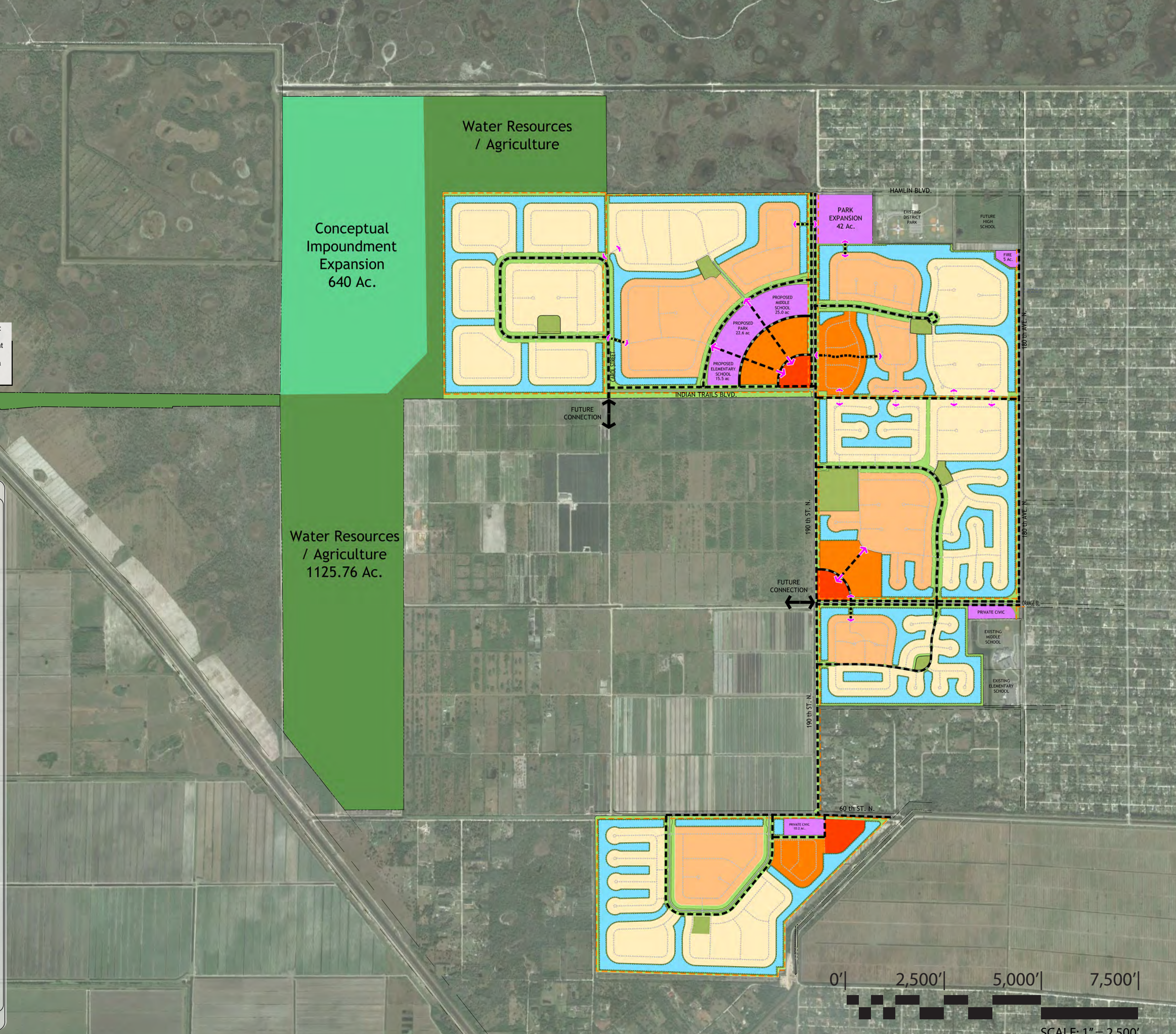
Note: Exterior Open Space is included in Total Open Space.

Note: Commercial includes: 300,000 SF Retail, 30,000 SF Office & 20,000 SF Light Industrial. 47 acres being 2% of the developable area (total acreage less EXTERIOR open space).

LEGEND

- Public connectivity via open spaces and collector & arterial roadways 11.25 miles +/-
- Public horse trails - 17.5 miles +/-
- Schematic pedestrian paths
- Community connectivity
- Commercial / Retail, Office & Light Industrial
- High Density Development Multi family and ZLL lots
- Medium density housing 50' ZLL to 65' SF lots
- Low density housing 65' SF to 100'+ SF lots
- Civic / Institutional use
- Private Recreation
- Perimeter Open Space
- Perimeter Open Space Water Management Areas
- Water Resources / Agriculture
- Conceptual Impoundment Expansion

IndianTrails MP 2015-09



SCALE: 1" = 2,500'

NORTH

