



April 2025

FIRE RESCUE ADMINISTRATOR

Administrative Assistant III

COMMUNITY RISK REDUCTION
Fire Marshal / Division Chief

ASSISTANT FIRE CHIEF

PLANNING/GIS
Division Director II

FINANCE
Division Director II

OPERATIONS
Deputy Chief

ADMINISTRATION
Deputy Chief

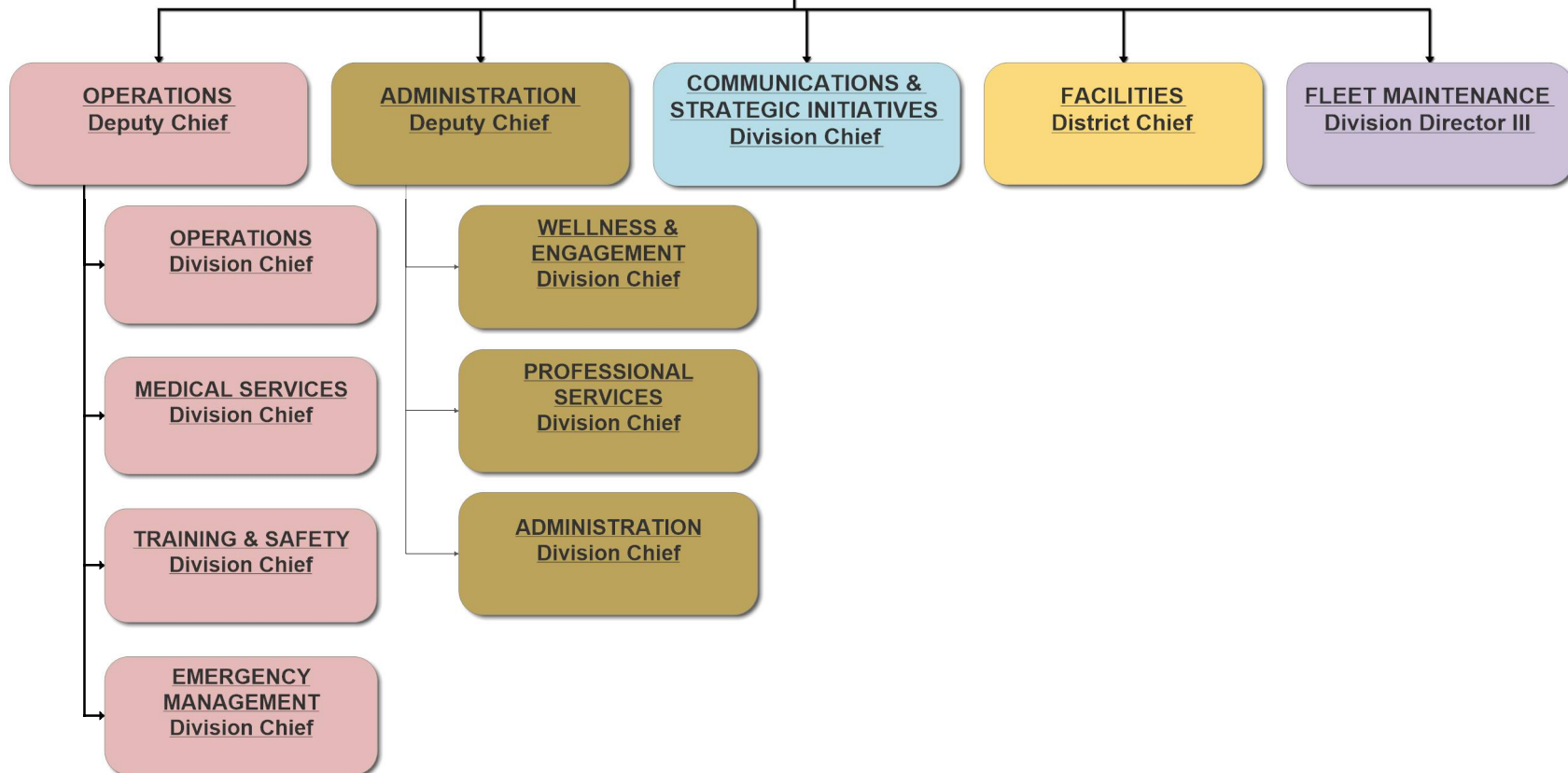
**COMMUNICATIONS &
STRATEGIC INITIATIVES**
Division Chief

FACILITIES
District Chief

FLEET MAINTENANCE
Division Director III



ASSISTANT FIRE CHIEF





OPERATIONS Deputy Chief

Administrative
Assistant III

OPERATIONS
Division Chief

MEDICAL SERVICES
Division Chief

TRAINING & SAFETY
Division Chief

EMERGENCY
MANAGMENT
Division Chief

PRIDE & PROTOCOL
On Call Prof.

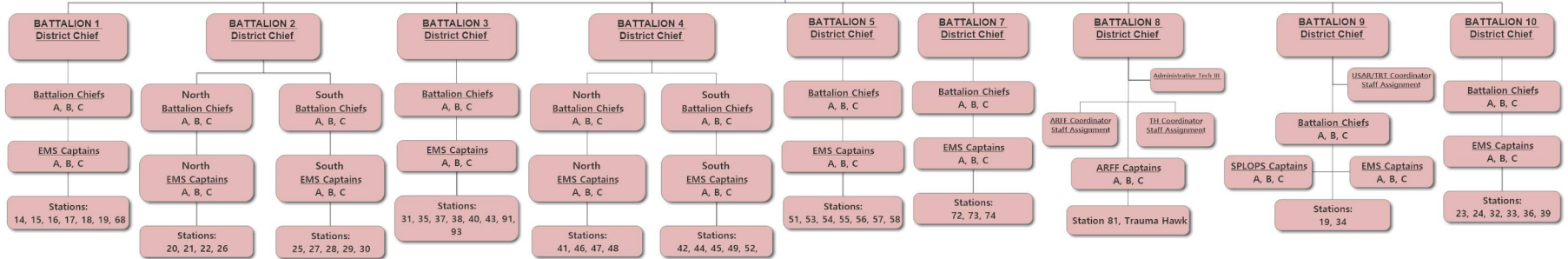
HONOR GUARD
PIPES & DRUMS



OPERATIONS Division Chief

Reserves

Operations Aide
Staff Assignment





MEDICAL SERVICES Division Chief

Asst to the Division Chief of
Medical Services
Staff Assignment

Hospital Liaison
Narcs/Exposure Control
Staff Assignment

EMS Quality Assurance /
EPCR Coordinator
Staff Assignment

Special Projects
Coordinator
Staff Assignment

FR Licensed Clinical
Social Work Coordinator

FR Licensed Clinical
Social Worker

FR Medical Social
Worker

Social Work Intern

On-Call Prof (2)

CARES Volunteers

Community Paramedic
Coordinator
Staff Assignment

Community Paramedic
Staff Assignment

Community Paramedics
Filled with Overtime

EMS Educators/CQI

EMS Educator/CQI
Staff Assignment

EMS Educator/CQI
Staff Assignment

EMS Educator/CQI
Staff Assignment



TRAINING & SAFETY Division Chief

Compliance Officer
Staff Assignment

Training Facility
Coordinator

Administrative
Assistant I

On Call Prof.

TRAINING & SAFETY District Chief

RECRUIT ACADEMY
Coordinator
Staff Assignment

Lead Instructors

Fire Coordinator
Staff Assignment

Fire CQI Coordinator
Staff Assignment

Probationary Firefighter
Training Coordinators
Staff Assignments (2)

Cadets

Assistant to the Division Chief of Training Battalion Chief/Staff Assignment

Aerial Coordinator
Staff Assignment

Dive Coordinator
Staff Assignment

Water Rescue Coordinator
Staff Assignment

Special Training Coordinator
Staff Assignment

Driver Coordinator
Staff Assignment

On Call
Training Assistant



EMERGENCY MANAGEMENT
Division Chief

**EOC Emergency
Services Branch**

Emergency Management Coordinator
Staff Assignment

**South Florida Regional
All-Hazards IMT**



ADMINISTRATION
Deputy Chief

**Administrative
Assistant III**

**WELLNESS &
ENGAGEMENT
Division Chief**

**PROFESSIONAL
SERVICES
Division Chief**

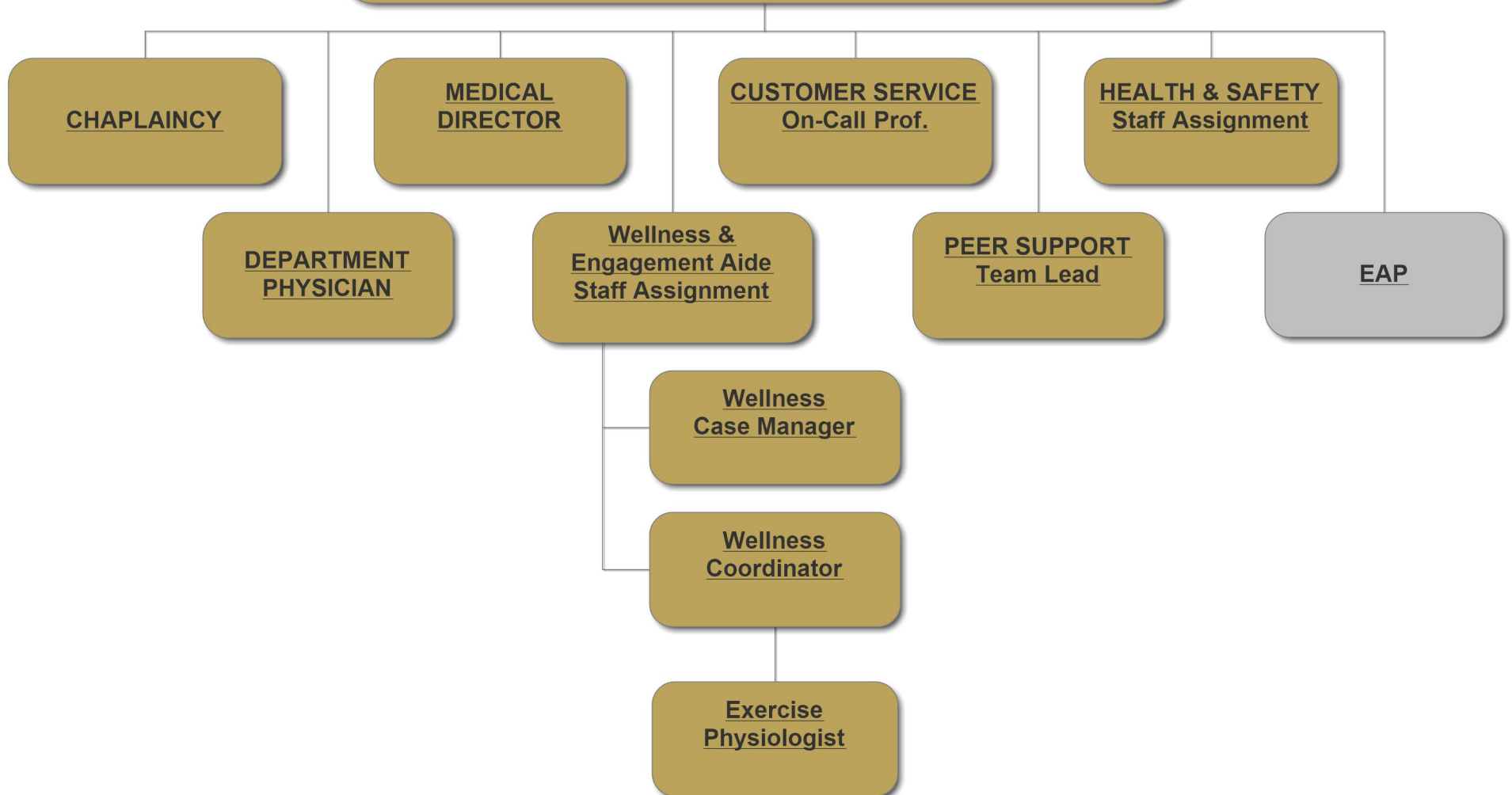
**ADMINISTRATION
Division Chief**

**INTERNAL AFFAIRS
Investigator
Staff Assignment**

EEO Compliance Officer



WELLNESS & ENGAGEMENT Division Chief





PROFESSIONAL SERVICES Division Chief

Professional Services Coordinator
Staff Assignment

RECRUITMENT & RETENTION
Special Assignment

Records & Information
Coordinator

Records & Information
Specialist

Administrative
Assistant II

Staffing Officer
Staff Assignment

Assistant Staffing Officer
Staff Assignment

Payroll & LTD
Coordinator

Financial Analyst II

Fiscal Specialist II

Fiscal Specialist II

Fiscal Specialist III

Administrative Clerk



ADMINISTRATION
Division Chief

Public Information Officer
Staff Assignment

Public Information and
Media Specialist

Student-Tech

MEDIA SERVICES
Video Manager

Broadcast Facility
Coordinator

TV Producer
Director

INFORMATION
TECHNOLOGY SERVICES
Manager



INFORMATION TECHNOLOGY SERVICES Manager

Data Processor II

System Integrator

Infrastructure
Systems Administrator III

Systems Administrator II

System Administrator I

System Administrator I

CAD
Systems Administrator III

Systems Administrator II

Applications
Systems Administrator III

Systems Administrator II

Systems Administrator II

Information Management
System Specialist



**COMMUNICATIONS &
STRATEGIC INITIATIVES**
Division Chief

**Fire Operations Officers
Staff Assignments (4)**

**RADIO SHOP
Communications
Coordinator**

Electronics Technician (5)

**COMMUNICATIONS
CENTER
Manager**

**ACCREDITATION
Accreditation Manager**

**Communications Center
Quality Assurance
Manager (2)**

**Communications Center
Training Supervisor**

**Communicator
Supervisor (4)**

**Communicator III (63)
Call Takers (6)**



FACILITIES
District Chief

**SECURITY & STATION
HARDENING**
Special Assignment

CAPITAL PROJECTS
Manager

FIRE RESCUE BUILDING
Coordinator

Facility Technician (7)



FLEET MAINTENANCE
Division Director III

Administrative Assistant I

SUPPORT SERVICES
Division Aide
Staff Assignment

RESPIRATORY PROTECTION
Manager

Respiratory Protection Specialist (2)

INVENTORY MANAGEMENT & STORES
Manager

Materials Manager

Inventory Specialist (3)

Driver

On Call - Prof (2)

Materials Manager

Inventory Specialist

Materials Manager

Inventory Specialist

Driver

FIRE APPARATUS MAINTENANCE
Superintendent

Shop Foreman (2)

Fire Apparatus
Technician II (20)



COMMUNITY RISK REDUCTION Fire Marshal / Division Chief

ISO/Special Projects
On Call Prof.

Administrative Assistant I

**NEW CONSTRUCTION
PLAN REVIEW
Supervisor
Staff Assignment**

Administrative Technician III

Administrative Technician II

**NEW CONSTRUCTION
Fire Inspectors (7)**

**PLAN REVIEW
Fire Inspectors (10)**

On Call Prof

Assistant Fire Marshal

**EXISTING INSPECTIONS
Supervisor
Staff Assignment**

Fire Inspectors (11)

Fire Inspectors (10)

**COMMUNITY EDUCATION
Supervisor
Staff Assignment**

Administrative Technician III

Community Educators (3)

On Call Prof (2)

**DROWNING PREVENTION
Manager**

Coordinator

**COMPANY INSPECTIONS
Fire Compliance Specialists
On Call Prof (4)**

**FIRE INVESTIGATIONS
Supervisor
Staff Assignment**

Fire Investigators (5)



FINANCE **Division Director II**

CONTRACTS/PURCHASING **Contract Manager**

Financial Analyst II

Procurement Specialist

Procurement Specialist

Financial Analyst II

Procurement Specialist

Procurement Specialist

On Call Prof.

BUDGET/REVENUE **Fiscal Manager I**

Financial Analyst I

REVENUE **Financial Analyst II**

Fiscal Specialist II

Fiscal Specialist II

Fiscal Specialist II

Intern

FINANCIAL SUPPORT **Financial Analyst II**

Financial Analyst I



PLANNING/GIS
Division Director II

Senior Planner

GIS Analyst

GIS/CADD
Technician II

Planner II

GIS Support Specialist

Planner I

Student-Tech