

2024 Tornado Annex Supplement



Incident Command Algorithm

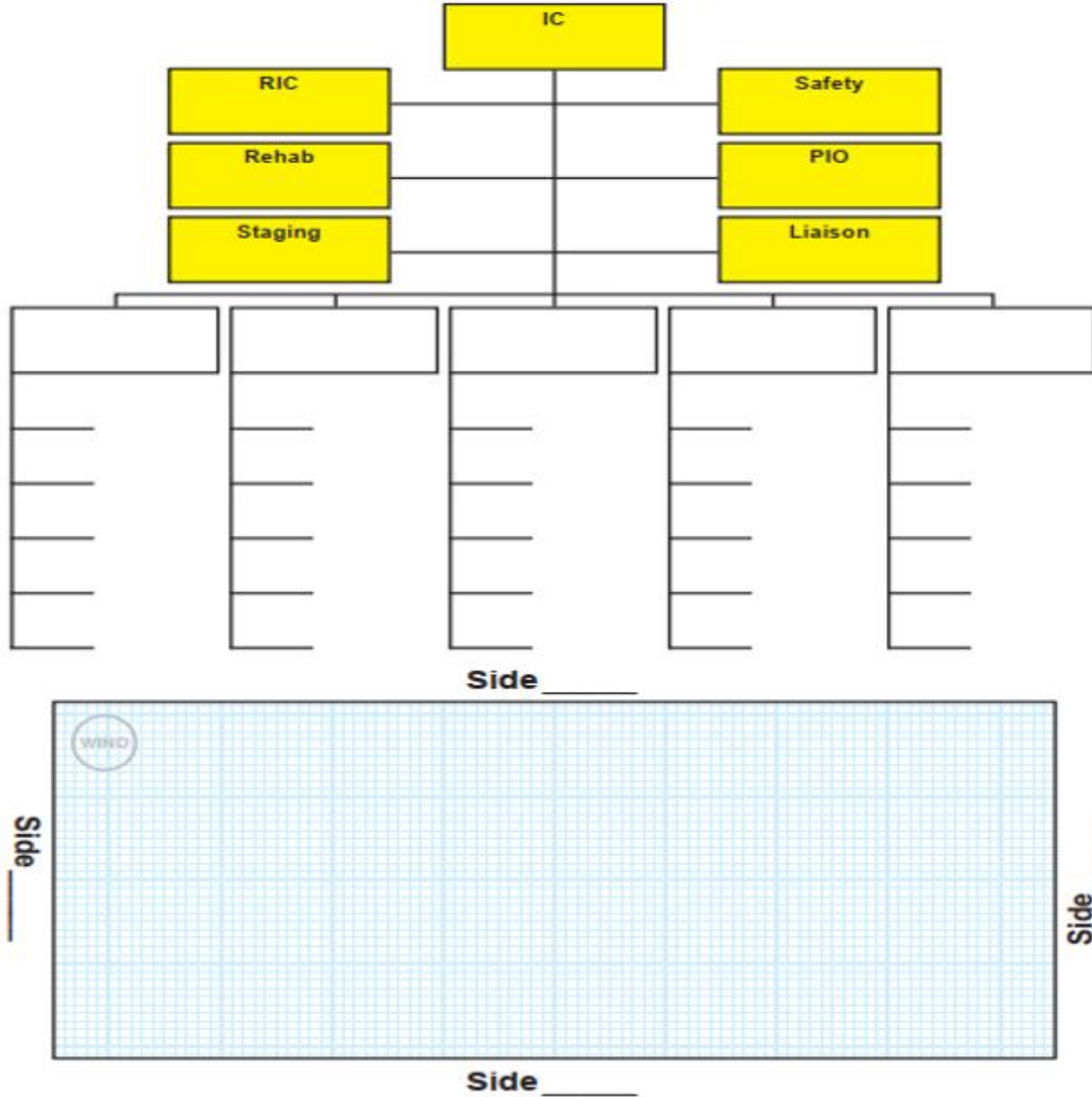
Short-term Mitigation plan (First 60 minutes)

- Ensure the safety of all personnel, residents, and visitors to PBC.
- Conduct a roll call and ensure all area units are safe and unharmed. Maintain accountability of all personnel throughout the duration of the incident.
- Establish a **COMMAND POST** which is visible but distanced away from the impacted area of damage. Continue to evaluate the need for additional resources throughout the incident.
- Establish **UNIFIED COMMAND** within 10 minutes of establishing a Command Post. Request a representative to report to the COMMAND POST (Police, Public Works, FPL, FPU, etc.).
- Consider a close-by school or shopping center parking lot as Level 2 staging /Base camp.
- Begin to identify a **PERIMETER** of the damage area. Specifically if there is one or multiple areas of severe damage. Notify the County Warning Point and consider the use of Drones, Mobile Command Unit, and Overhead Command Team if needed.
- Consider using Crossroads to divide incident into **4 Divisions** or **Branches**. Consider using Hot, Warm, and Cold Zones as the basic level of damage. Consider Command Bus and a larger Support Staff (IC, Operations, Planning, Logistics, Finance) if expected to last more than 1 operational period
- As Units arrive the Incident Commander shall create a strategic and methodical plan to have crews perform a **Rapid Impact Assessment (RIA)** in the following order; **(1) Fire Station and surrounding area; (2) Critical Infrastructure (3) Main Roads (4) All streets and buildings in response zones** using the **RIAT App** on their department cell-phones.

Crews should be mindful of the following hazards including;

- **Downed Power Lines**
- **Roads are blocked/ impassable due to debris (be prepared to walk, carry anticipated equipment such as medical equipment)**
- **Hazardous Spills**
- **Injured people on or near roadways**
- **Fires**
- **Flooding**
- **Possibility of continued severe weather**
- **When Searching buildings use the FEMA form Appendix**
- Emergency calls should be prioritized by dispatch or the Incident Commander (IC) and saved in chronological order in an effort to prioritize emergency calls. Although having crews complete their **(RIA)** is critical, Life safety does take precedence. Crews should expect to be dispatched to emergency calls. Afterwards, it is important for them to return and finish completing their **(RIA)**.
- Target Hazards (ACLF's, Trailer Parks, Hospitals, Hazardous Material) sites should be made a priority and if possible have the Community Risk Reduction Division (CCR) make contact with business owners.

Tactical/Accountability Board



Initial Period Command emphasis:

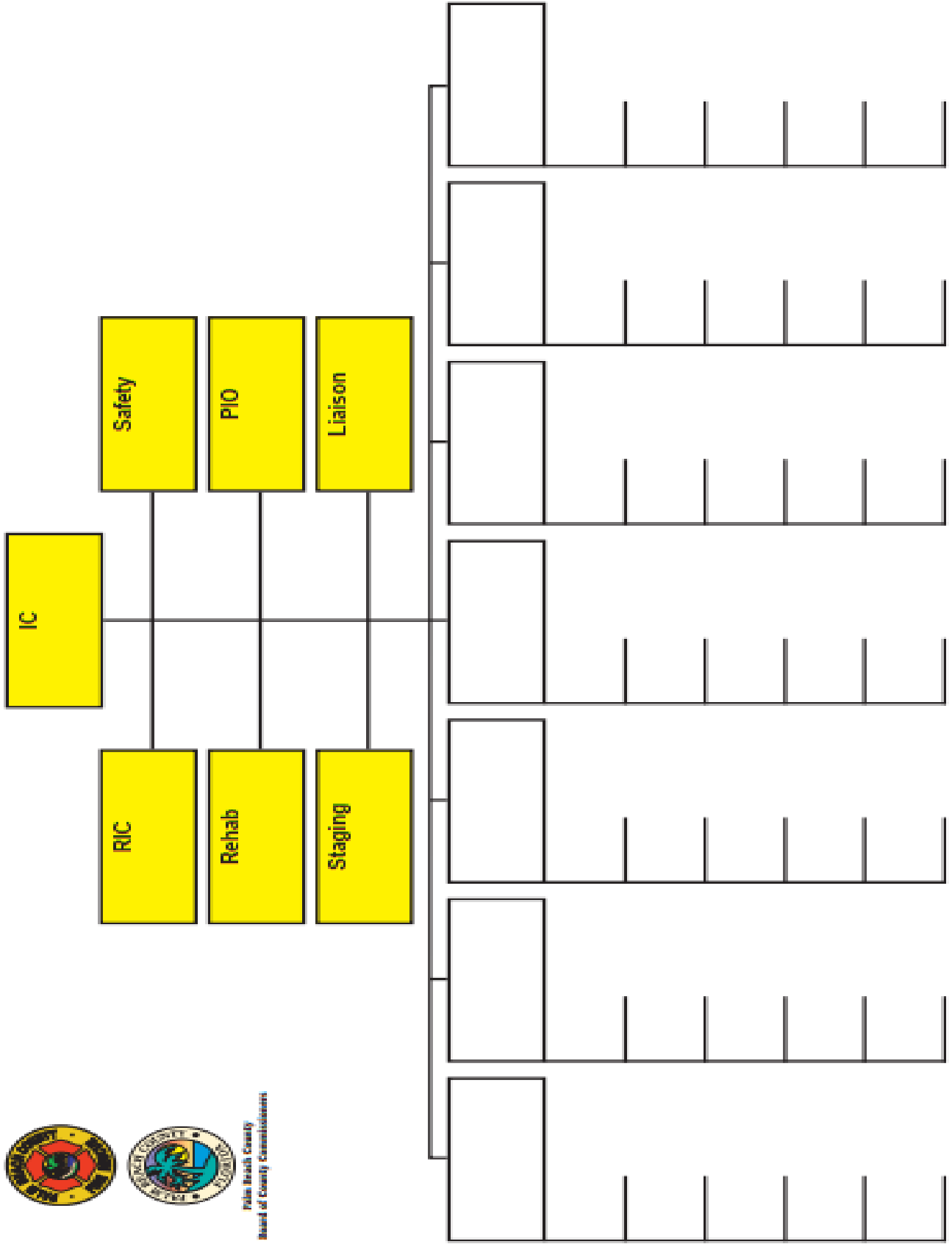
Fire Department: Life safety: including rescuing trapped civilians, transporting injured, extinguishing fires, identifying natural gas lines leaks.

Police: Perimeter control of civilians, identification and control of deceased civilians, security for the command post, media (PIO) and traffic control.

Public Works Emphasis: Clearing roads of large debris to allow for rescue vehicles. This could include small tools such as chainsaws and utilization of large debris moving machinery.



Palm Beach County
Board of County Commissioners



TORNADO WORKSHEET (Divisions / Branches)



