

South Lake Worth Inlet

Jack & Bore Casing Installation

Inlet Management

- Shoals and interior channels accumulate sediments over time.
- Periodic dredging of these areas is required to maintain navigation and water quality.
- Beach compatible sediments are dredged, pumped through a temporary pipeline, and placed on the beach to mitigate inlet effects.

Problem

- Past pipeline route causes disruption to park operations and beach access during dredge events.

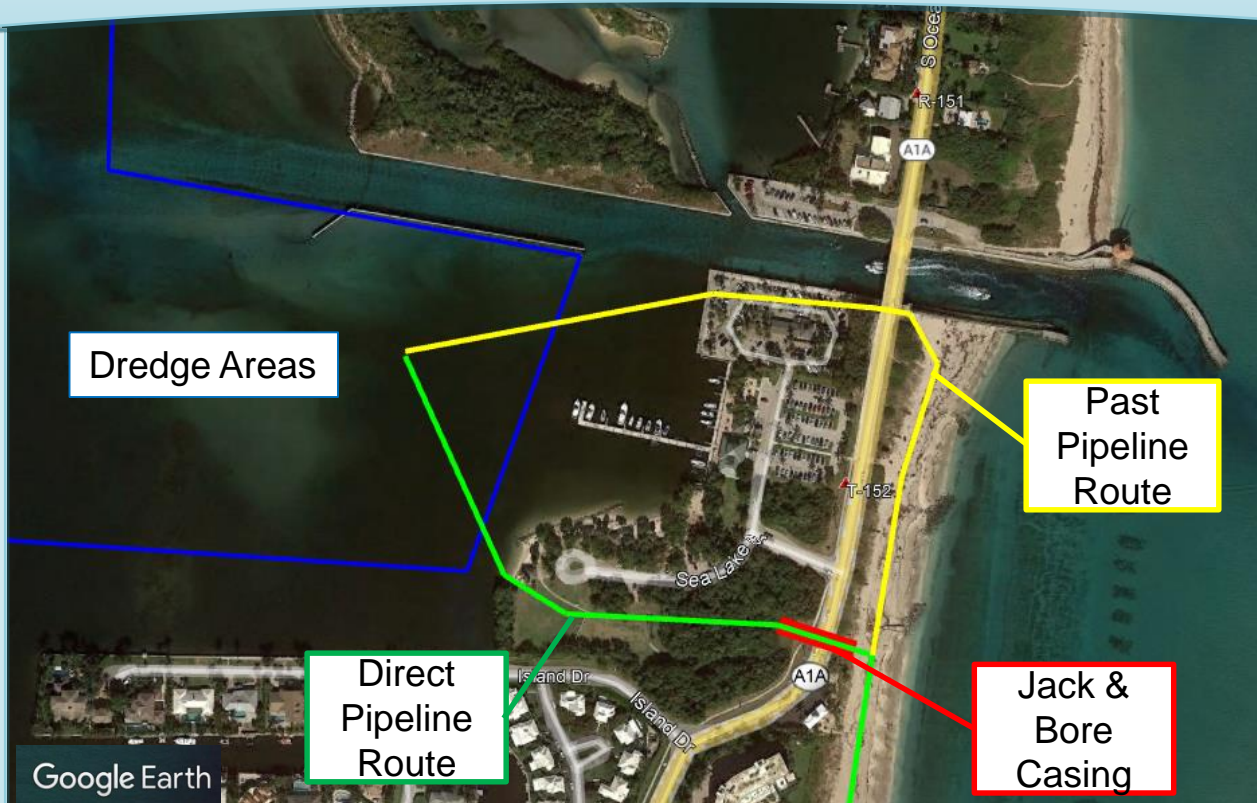
Solution

- Establish a more direct pipeline route between the dredge areas and beach.

Benefits

- No more pipeline in the parking lot or along the jetty.
- Less pipe on beach.
- More efficient, cost-effective mobilization and demobilization.

Connect with Us
@pbcerm



Project Overview

- Located at the south end of Ocean Inlet Park, Town of Ocean Ridge.
- Install a permanent, 115-foot, 30-inch diameter steel casing under State Road A1A.
- Casing will be sealed at both ends when not being used for the temporary pipeline during dredge events.
- Public access to the beach and most of the park will not be restricted during construction.
- State Road A1A will remain open during construction.
- Construction will take place after sea turtle nesting season.

Construction Timeline

- November-December 2021
Vegetation trimming; pre-work excavation and layout.
- January-March 2022
Excavation, installation, and backfilling around casing.



Project Partners

Palm Beach County and Florida Department of Environmental Protection



Palm Beach County Board of County Commissioners
Department of Environmental Resources Management
2300 North Jog Road - Fourth Floor, West Palm Beach, FL 33411
Phone: 561-233-2400 pbcerm.com

