

LED CONVERSION



STREET LIGHTING IN PALM BEACH COUNTY

Amy Harris, PE

WHY CONVERT TO LED ?



BENEFITS OF LED

LEDs offer:

- Superior color rendition and differentiation
- High color rendering index (CRI)
- More natural colors than HPS
- High efficiency
- Energy savings up to 50%+
- Greater variety of choices

Generally cost SAVINGS



SURTAX PROGRAM LED CONVERSION

- We have approximately **12,000** HPS lights to be **converted** within the 10 year plan.
- **Majority** are **FPL** owned and offer options to convert
- **Remaining** are owned by **FDOT** that we **maintain** for them with some compensation to do so
- Only **1%** of our existing lights are in **High Mast Towers**
- High Mast Towers are the **only systems** that have **mechanical** maintenance in addition to **electrical**

80 ft. High Mast Towers



- 44 Towers (3 lights each)
- **132** Lights

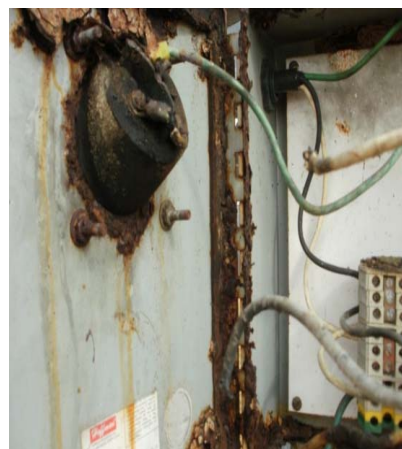
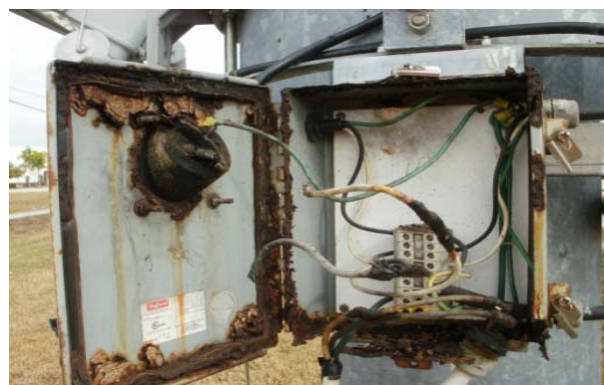
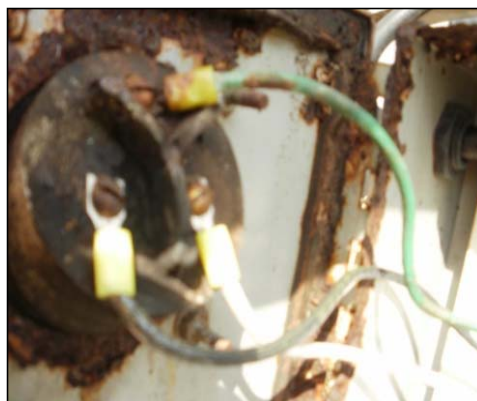
40 ft. Conventional Lights



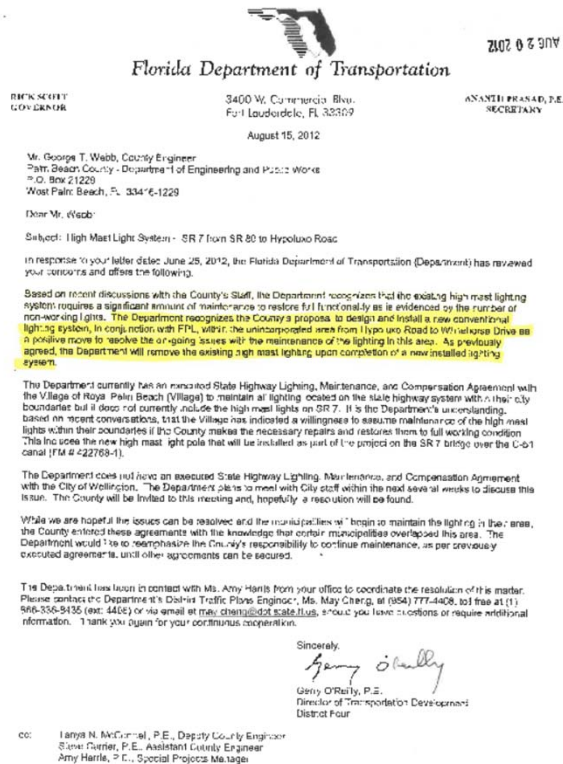
- **220 – 260** Lights
- \$300,000- \$400,000 CIAC

Maintenance Issues- Mechanical & Electrical





FDOT AGREES



- The Department recognizes the County's proposal to design and install a new conventional lighting system, in conjunction with FPL, within unincorporated area from Hypoluxo Road to Whitehorse Drive as a positive move to resolve the on-going issues with the maintenance of the lighting in this area. As previously agreed, the Department will remove the existing high mast lighting upon completion of a new installed lighting system.

WHY?

....80' High Mast **Towers** vs. 40' FPL **Poles**

- **Towers** have **both** mechanical & Electrical **maintenance**
- **LED** technology is **less efficient** for **higher wattage** replacement needs, so minimal savings
- Many **towers** have **1000W** lights
- **Maintenance** duties to **FPL**, relieving PBC staff
- **Savings** of over \$50,000 annual in **maintenance** by PBC
- **Increase** in FDOT **compensation** of approximately \$35,000 a year

WHAT WE NEED TO BEGIN:

- Funds to begin illumination analysis and layout design by consultant (Estimate **\$106,000 in FY 2025** to be sufficient)to **move to FY 2019**.
- **FPL** to complete design of equipment, prepare Work Order & Agreements
- **FDOT** to give final approval of new design, and program removal of Towers.
- Installation by FPL estimated 2021, (which coincides with the **FY 2021** funds available for **Tower Rehab of \$500,000**)

QUESTIONS ?

