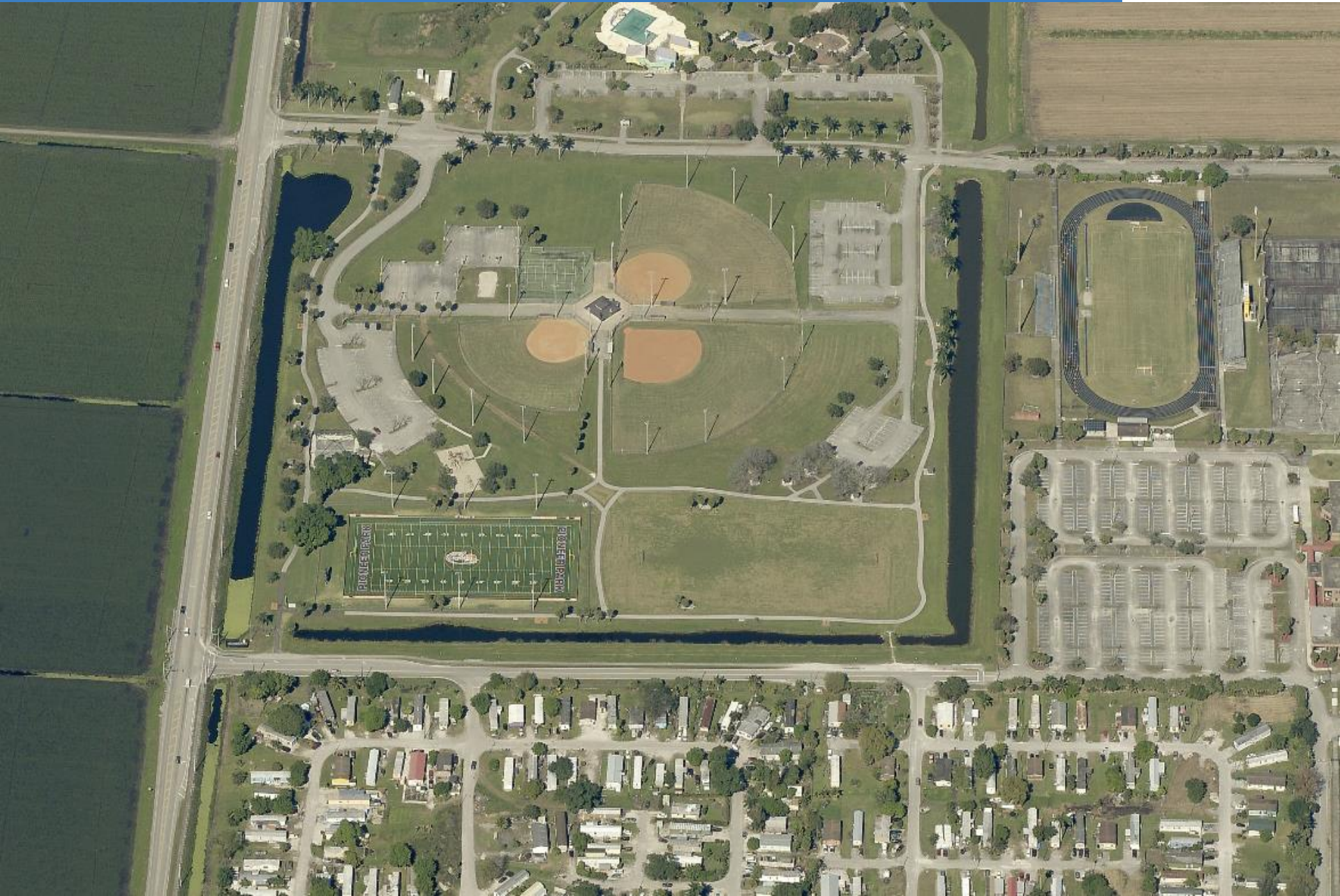


- \$68,600 in surtax funds were allocated in FY2022 for the Pioneer Park Light Replacement project.
- Project Scope: Replacement of light fixtures, brackets and heads/arms throughout the park to maintain safety. Existing lights are past their expected life cycle. Light poles were determined to be in good condition and not in need of replacement.
- Project Cost: \$117,503
- **Request to transfer \$60,000 from Parks and Recreation Surtax Reserves to cover the budget shortfall.**

Glades Pioneer Park Light Replacement



LED Light Specification

OSQ Series

OSQ™ LED Area/Flood Luminaire featuring Patented NanoComfort™ Technology – Version C

Rev. Date: V6 08/24/2023

Product Description

The OSQ™ Area/Flood luminaire blends extreme optical control, advanced thermal management and modern, clean aesthetics. Built to last, the housing is rugged cast aluminum with an integral, weathertight LED driver compartment. Versatile mounting configurations offer simple installation. Its slim, low-profile design minimizes wind load requirements and blends seamlessly into the site providing even, quality illumination. Medium is suitable upgrade for HID applications up to 400 Watts. Large is suitable upgrade for HID applications up to 1000 Watts. Extra Large is suitable upgrade for HID applications up to multiple 1000 Watts.

Applications: Parking lots, walkways, campuses, car dealerships, office complexes, pickleball courts, high-mast and internal roadways

Performance Summary

- Utilizes Patented NanoComfort™ Technology
- Utilizes Cree TrueWhite® Technology on 5000K Luminaires
- Assembled in the USA by Cree Lighting from US and imported parts
- Initial Delivered Lumens:** 4,000 - 85,000
- Efficacy:** Up to 171 LPW
- CRI:** Minimum 70 CRI (3000K, 4000K & 5700K); 90 CRI (5000K)
- CCT:** 3000K, 4000K, 5000K, 5700K
- Limited Warranty:** 10 years for luminaire; 10 years for Colorfast DeltaGuard® finish; 5 years for BML sensor; up to 5 years for Synapse® accessories; 1 year for luminaire accessories

* See <http://creeledlighting.com/warranty> for warranty terms. For Synapse accessories, consult Synapse spec sheets for details on warranty terms.

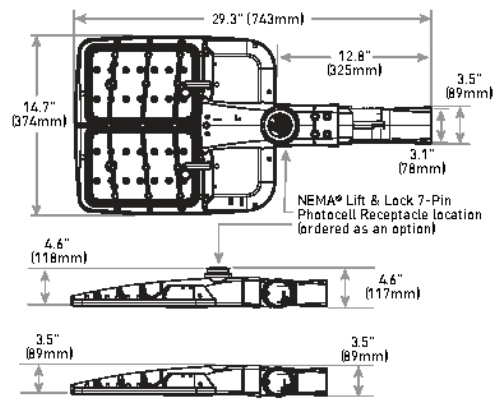
Ordering Information

Fully assembled luminaire is composed of two components that must be ordered separately:
 Example: **Mount:** OSQ-ML-C-AA-BK + **Luminaire:** OSQM-C-4L-30K7-2M-UL-NM-BK

Mount (Luminaire must be ordered separately)*			
OSQ-			
Medium/Large Mounts	Extra Large Mounts	Color Options:	SV Silver BZ Bronze
OSQ-ML-C-AA Adjustable Arm	OSQ-X-C-AA Adjustable Arm		BK Black WH White
OSQ-ML-C-DA Direct Arm	OSQ-X-C-DA Direct Arm		
OSQ-ML-C-TM Trunnion Mount			

* Reference luminaire mounting drill pattern, EPA, and pole configuration suitability data beginning on page 14.

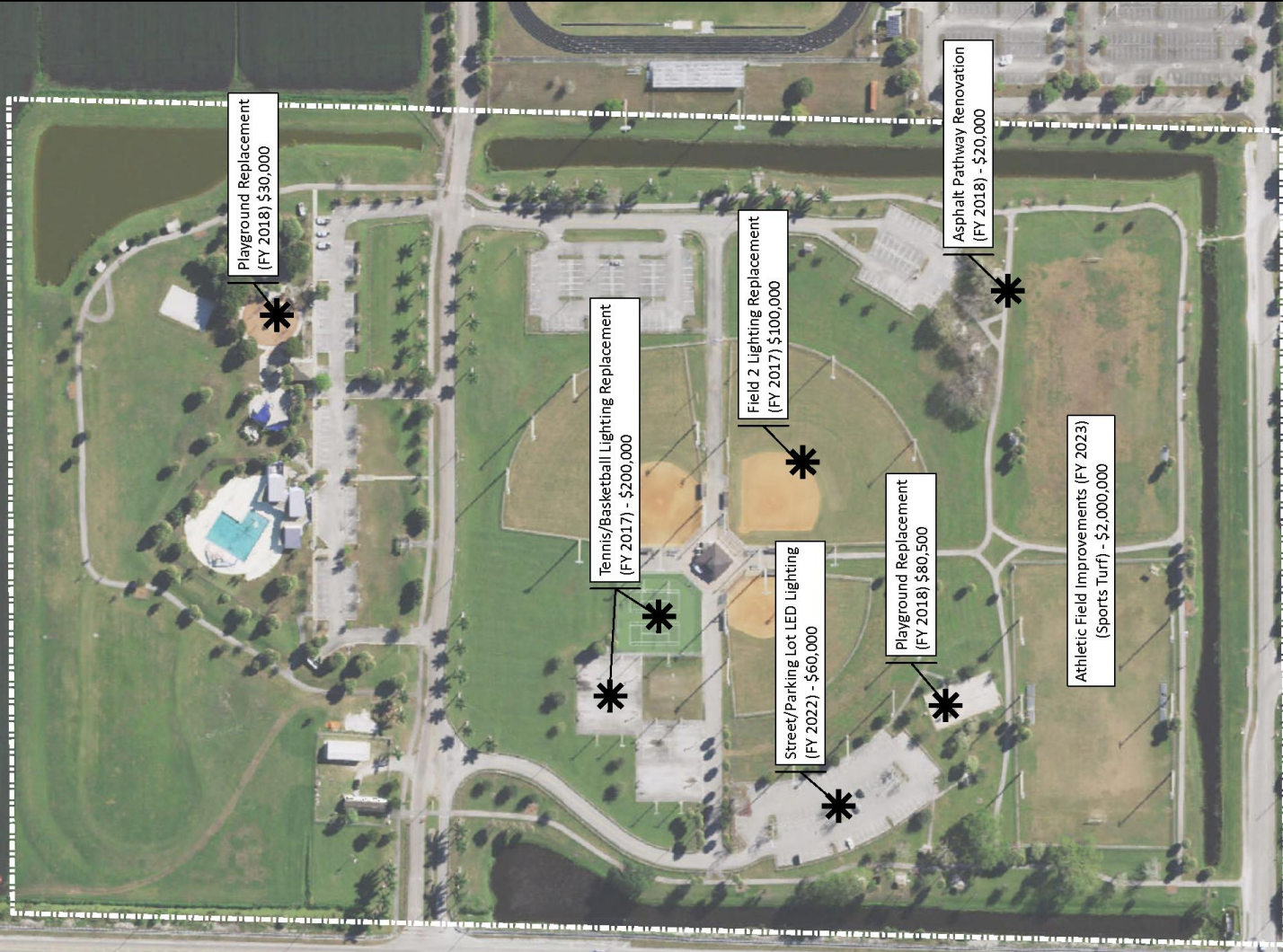
OSQM - AA Mount



Luminaire	Weight
OSQM	19.3 lbs. (8.8kg)

Note: For OSQL, OSQX and additional mounts, refer to drawings on page 27.

Glades Pioneer Park Surtax Projects



Playground Replacement
(FY 2018) \$30,000

Tennis/Basketball Lighting Replacement
(FY 2017) - \$200,000

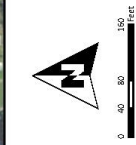
Street/Parking Lot LED Lighting
(FY 2022) - \$60,000

Field 2 Lighting Replacement
(FY 2017) \$100,000

Field 1 Lighting Replacement
(FY 2017) \$80,500

Asphalt Pathway Renovation
(FY 2018) - \$20,000

Athletic Field Improvements (FY 2023)
(Sports Turf) - \$2,000,000



This map is provided "as-is" without warranty or any representation of accuracy, completeness, or fitness for a particular purpose. The owner of this map shall be responsible for any errors or omissions. The user shall be responsible for any errors or omissions. The user shall be responsible for any errors or omissions. The user shall be responsible for any errors or omissions.

Glades Pioneer Park Infrastructure Sales Tax Capital Projects

Glades Pioneer CDBG Funded Projects



Attachment C - Design