

CAM D. MILANI PARK

COMMUNITY PRESENTATION
APRIL 2025



COUNTY PROJECT TEAM

Facilities Development and Operations (FDO)

Isamí C. Ayala-Collazo, ACA & FDO Director

Andy Gamble, Project Manager, FDO Capital Improvements

Fernando DelDago, Director, FDO Capital Improvements

Eric McClellan, Director FDO Strategic Planning

Ph. 561-233-0253

Parks and Recreation

Tammy K. Fields, Assistant County Administrator (ACA)

Jennifer Cirillo, Director, Parks and Recreation

Bob Hamilton, Director Planning, Research and Development, Parks and Recreation

Ph. 561-966-6651

Design Consultant

Brooks Scarpa Architects, Inc.

WHERE THE PROJECT STANDS

- In April 2024, the County issued to the Town a notice of Intent to Resume Development
- Design is progressing as per the Stipulated Settlement Agreement and Addendum (SSAA)
- Compliance Package is to be submitted to the Town, as required by the SSAA, by April 2026
- What cannot be considered at this time?
 - Not building the park
 - Modifications to the 43 conditions of the SSAA (e.g., reducing the number of parking spaces)
- What can be considered at this time?
 - Enhancements to the design that lead to a community-integrated design (e.g., look and feel, plant species, materiality)

COMMUNITY INPUT – OPEN DISCUSSION

Typical and customary decorum/respect is expected and required.

Design will proceed as required under the approved site plan and the Stipulated Settlement Agreement, County Staff is here to gather input, no decisions are to be made today, all input will be well-received.

Each speaker will be given 3 minutes to speak.

We will answer questions received, be it during the meeting or at a later time if information is not readily available.

EXISTING CONDITIONS

EXISTING PHOTOS

WEST PARCEL



EXISTING PHOTOS

WEST PARCEL

1



2



3



4



5



6



7



8



9

EXISTING PHOTOS

EAST PARCEL



EXISTING PHOTOS

EAST PARCEL

1



2



3



4



5



6



EXISTING PHOTOS

BEACH



EXISTING PHOTOS

BEACH

1



2



3



4



5



6



7



8



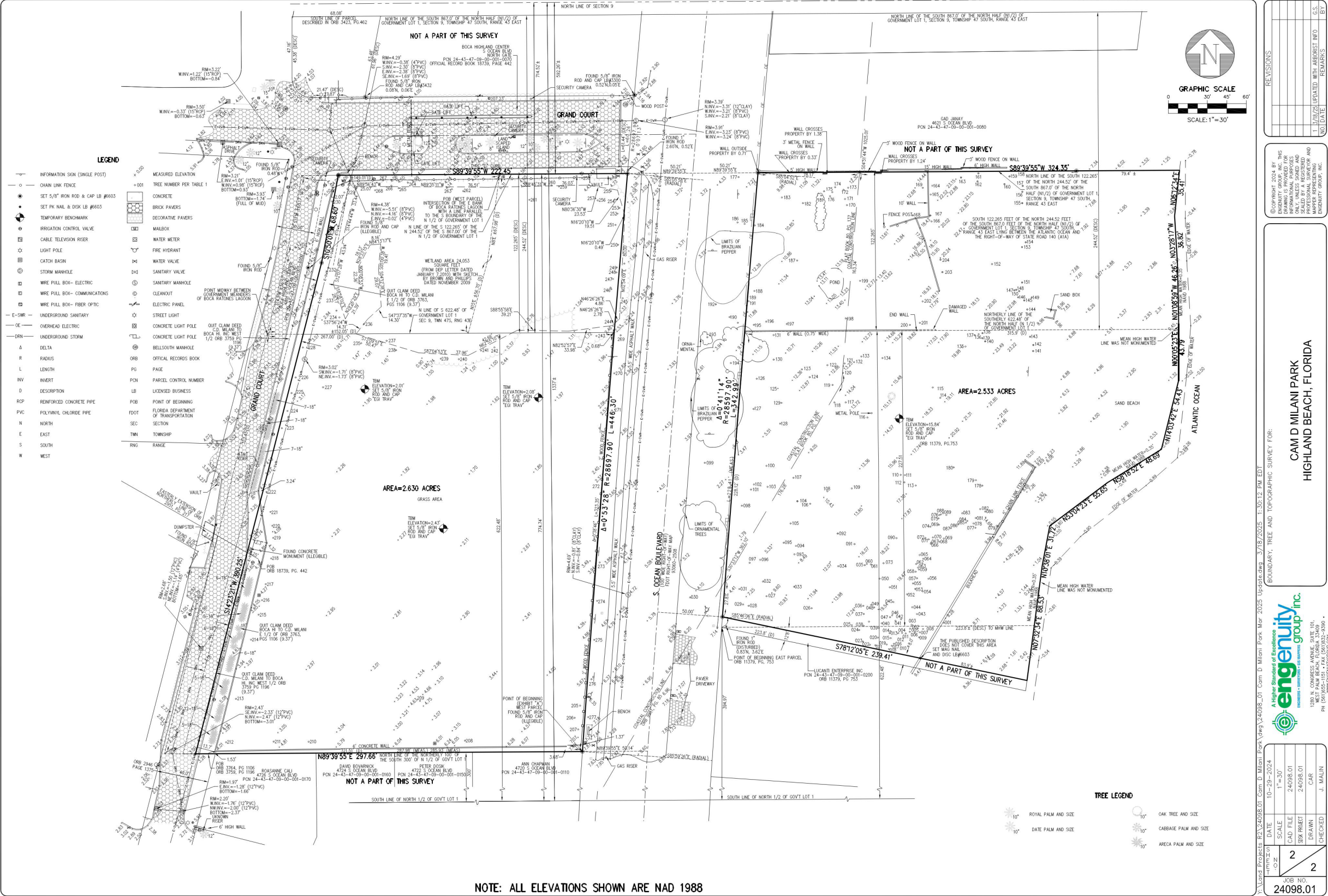
9

10



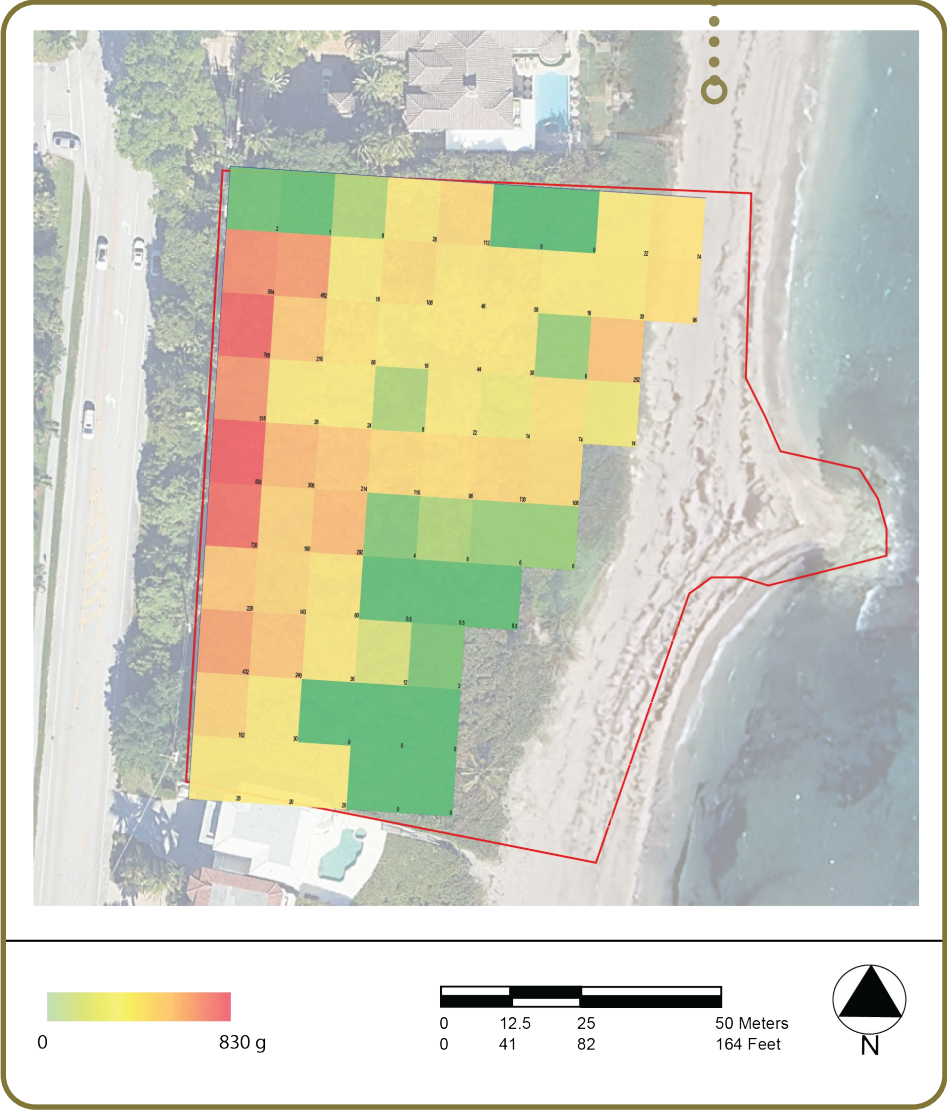
SITE ANALYSIS

SURVEY

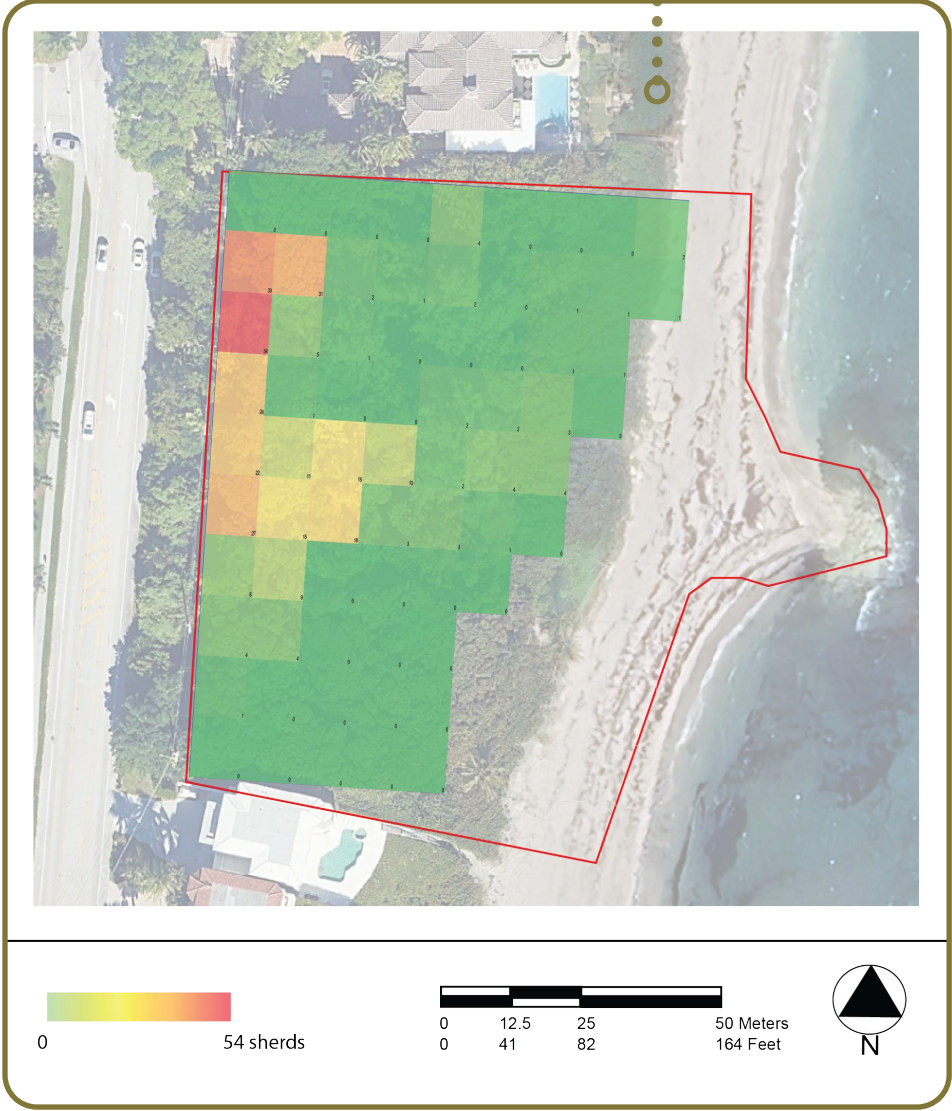


CULTURAL RESOURCE ASSESSMENT (CRAS)

Aerial photograph showing relative density of faunal bone recovered from shovel tests.



Map showing relative density of prehistoric ceramics recovered from shovel tests.

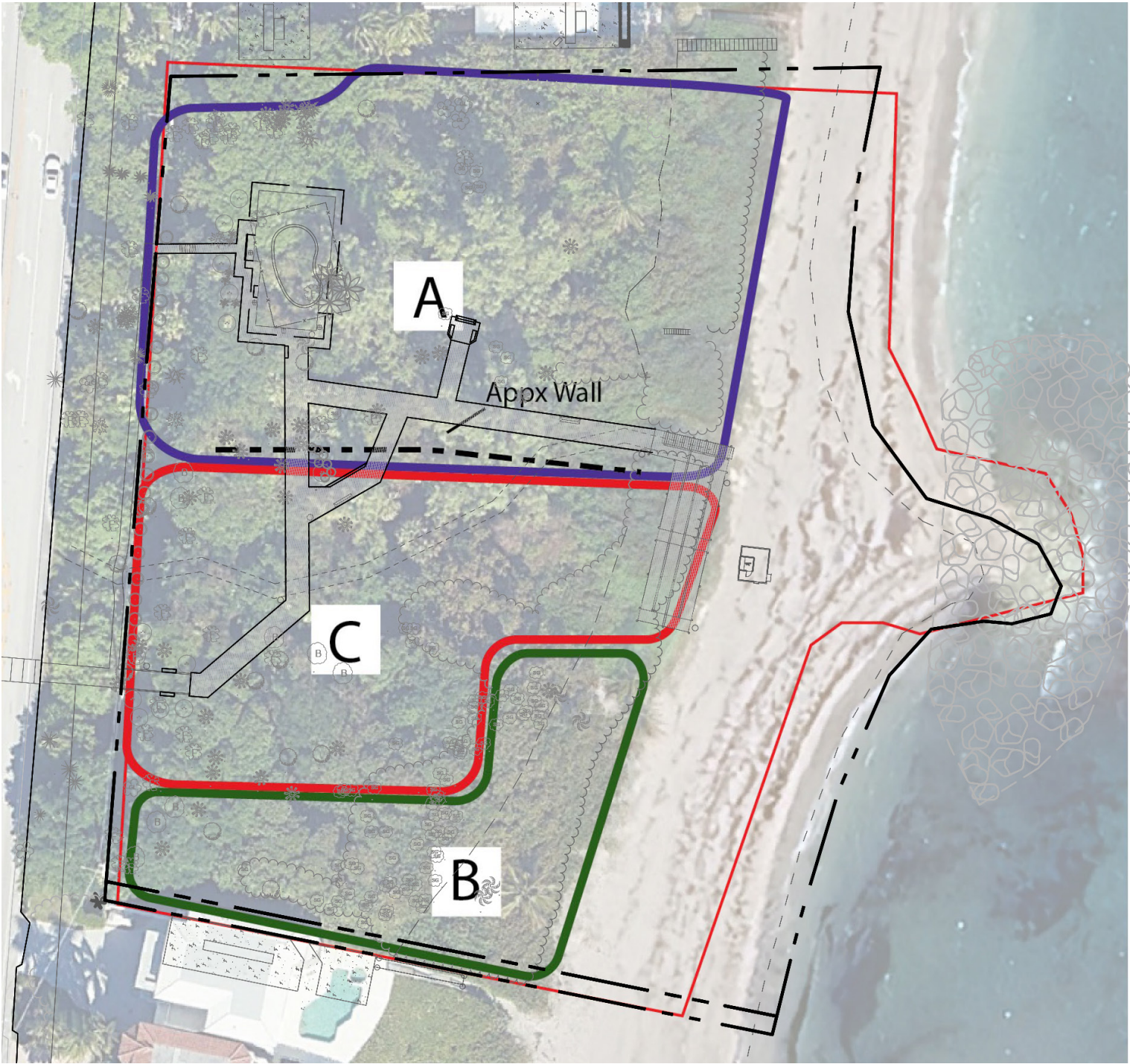


- A** Area of Intact Midden. Limit or avoid ground disturbance by adding fill.
- B** Area of Mostly Intact Soils. Limit or avoid ground disturbance by adding fill.
- C** Area of Reported Human Remains. Avoid improvements and/or trails.



Aerial photograph showing parcel divided into archeological management areas.

CULTURAL RESOURCE ASSESSMENT (CRAS)



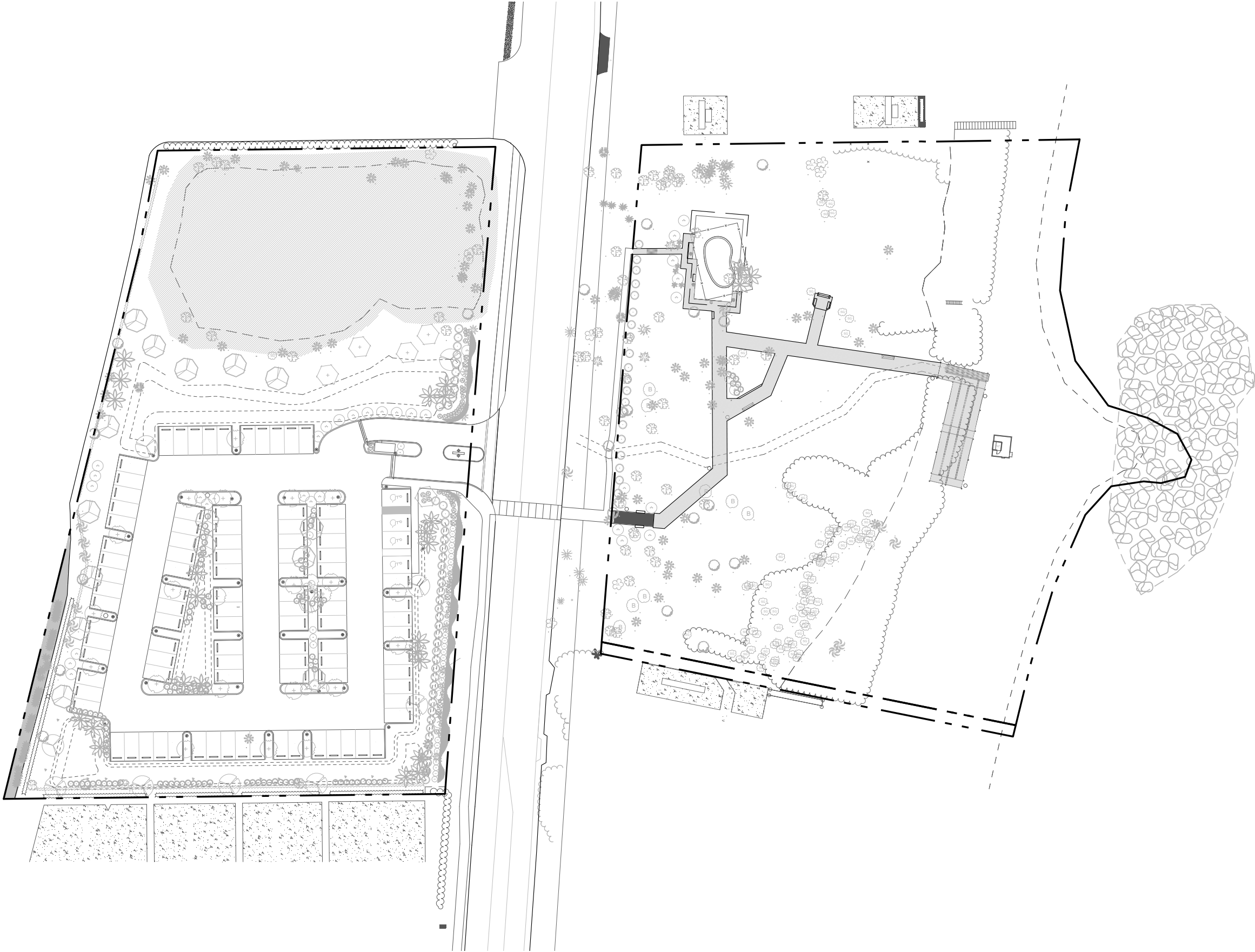
- A** Area of Intact Midden. Limit or avoid ground disturbance by adding fill.
- B** Area of Mostly Intact Soils. Limit or avoid ground disturbance by adding fill.
- C** Area of Reported Human Remains. Avoid improvements and/or trails.

SITE ECOLOGY, HYDROLOGY AND GEOLOGY



DESIGN APPROACH

STIPULATED SETTLEMENT AGREEMENT SITE PLAN



INITIAL SKETCHES

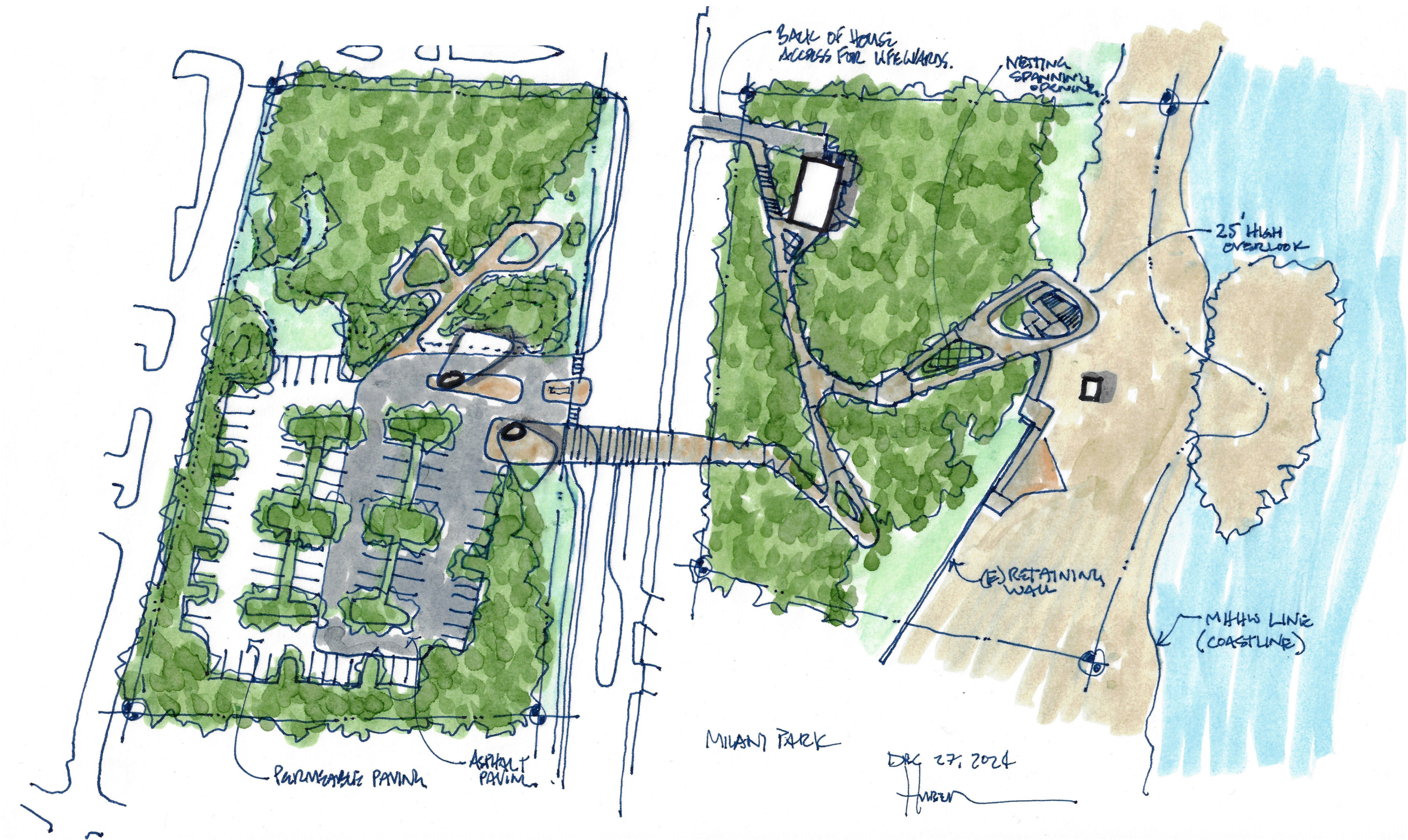


	STIPULATED SETTLEMENT AGREEMENT SITE PLAN	BROOKS + SCARPA PROPOSAL FOR CAM D. MILANI PARK
PARKING	100 parking spaces occupy the majority of the Western parcel. The proposed material is asphalt.	Shift parking lot to accommodate other program such as plaza or added landscaping features. Material can be partially asphalt and partially permeable concrete or similar surface.
LANDSCAPE	Proposed planting palette includes shade trees, palms and shrubs. Non-native, invasive vegetation will be removed.	Proposed planting palette will be updated to include Florida-friendly species. Non-native, invasive vegetation will be removed.
BOARDWALK	Linear boardwalk extends across Eastern parcel.	Explores the potential of additional boardwalk on Western parcel near wetland. Considers different configurations of boardwalk on Eastern parcel.
GATHERING AREAS	Gathering areas are limited to rest areas along boardwalk in Eastern parcel.	Increase gathering areas incorporating opportunities for education throughout the Eastern and Western parcels.

CONCEPTS

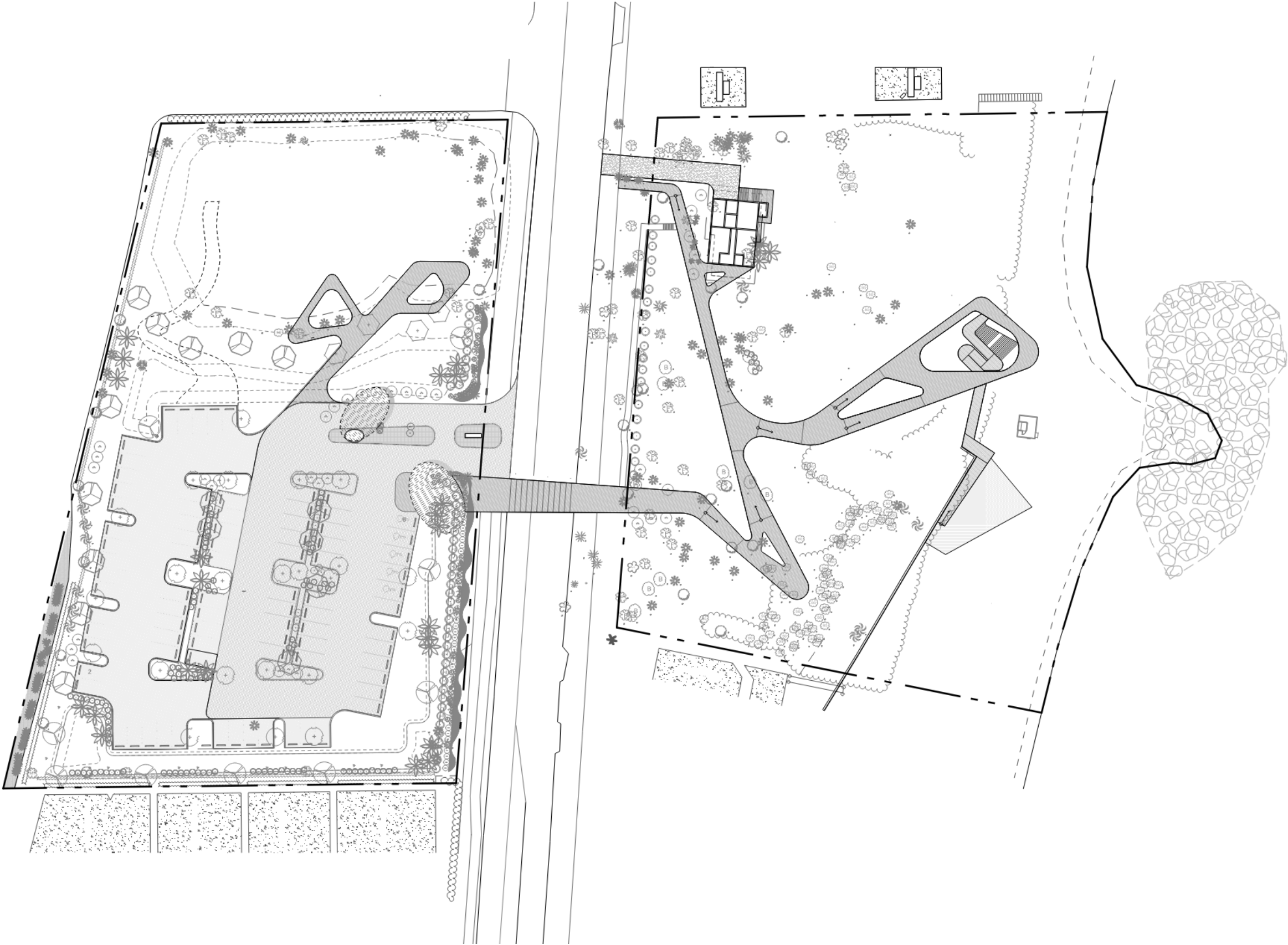
THE PERCH - *First Draft*

SKETCH



THE PERCH - *First Draft*

SITE



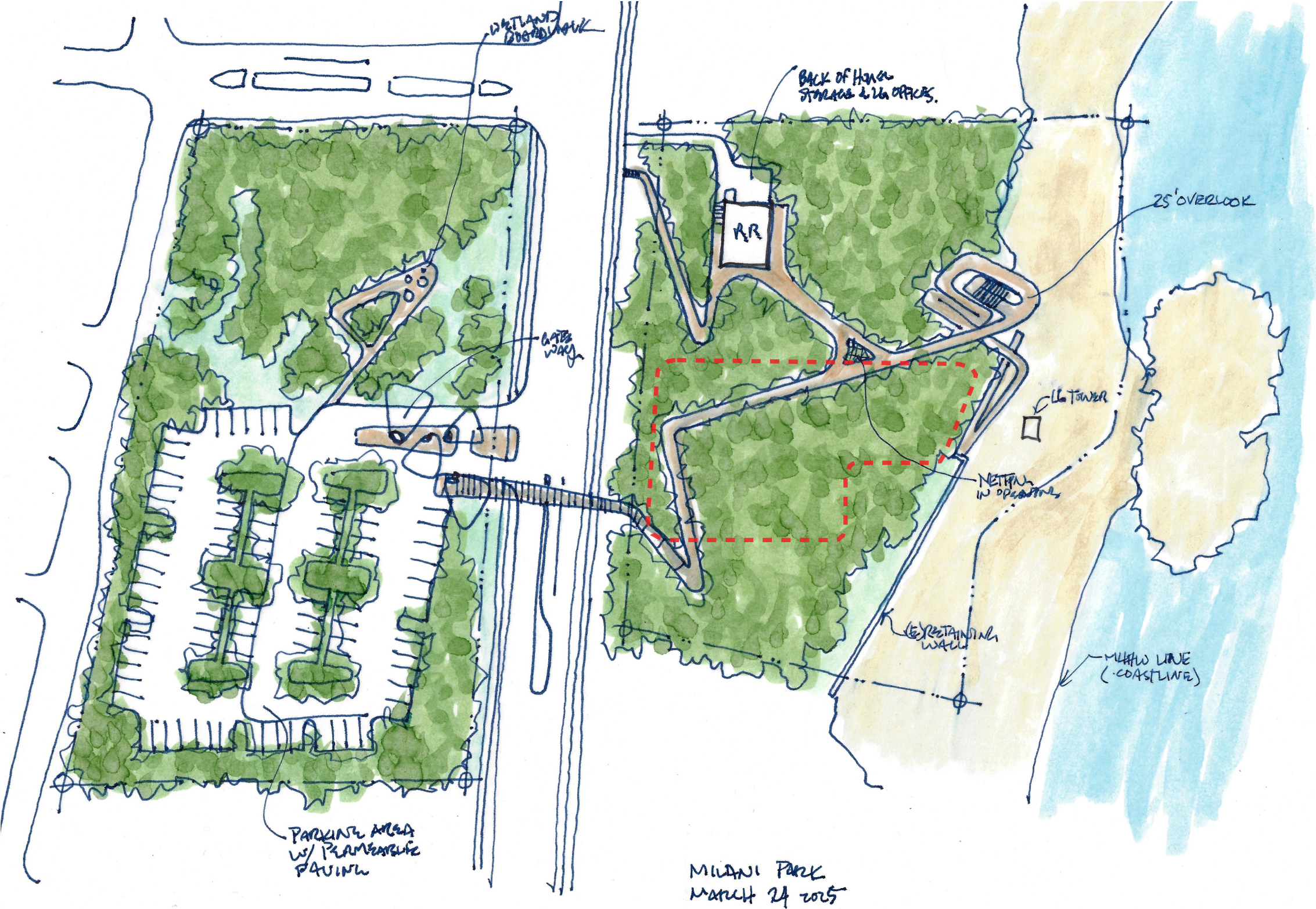
THE PERCH - *First Draft*

OVERLAY COMPARISON



THE PERCH - *Current Design*

SKETCH



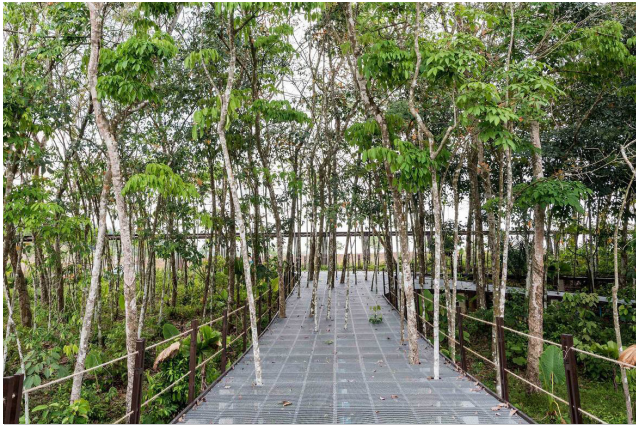
PROGRAM ELEMENTS

PROGRAM ELEMENTS

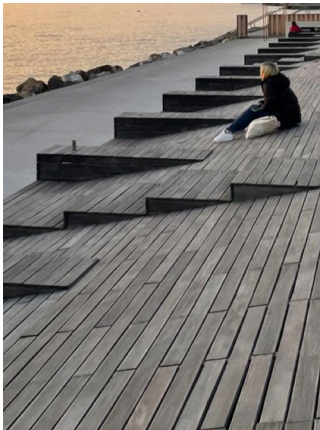
Elevated Boardwalk



Park(ing) Area



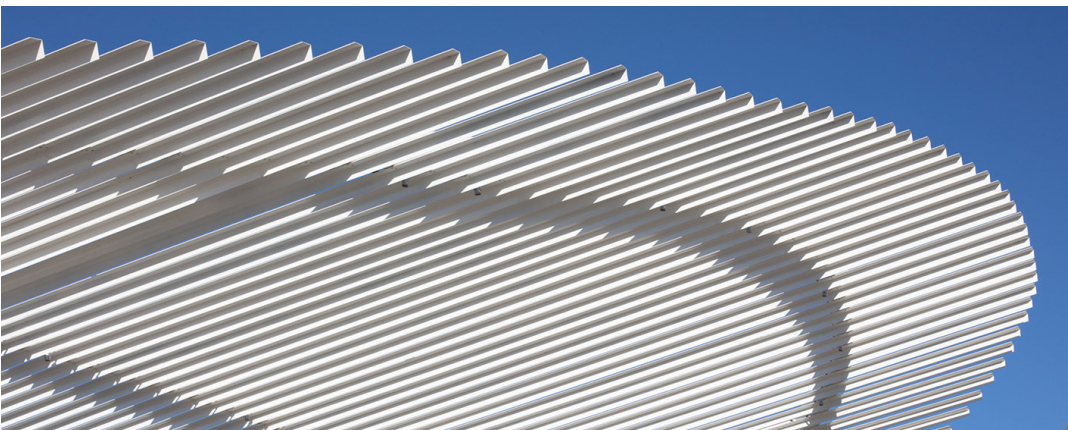
Florida-friendly Landscape



Social Stair



Signage

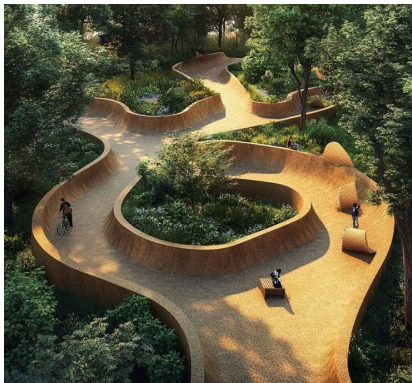


Shade Canopy

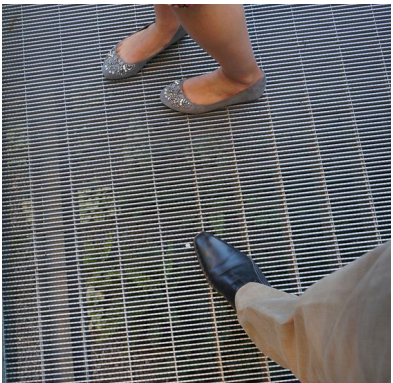


Building Materiality

ELEVATED BOARDWALK



MATERIALITY



Metal Grate



Accoya



Textured Concrete



Bronze Anodized Aluminum

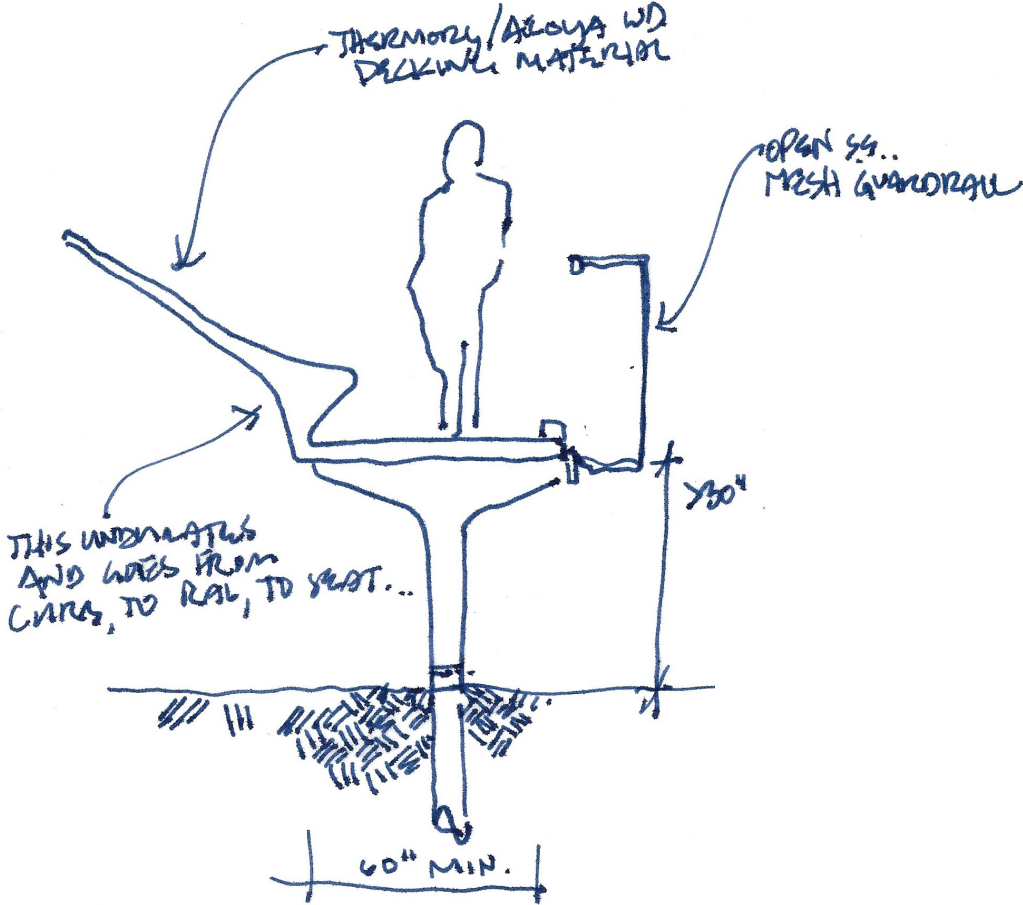
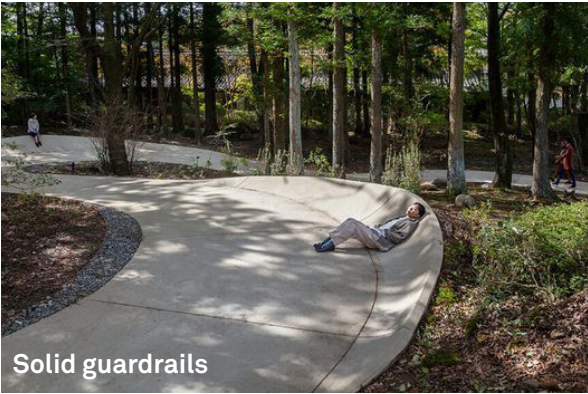
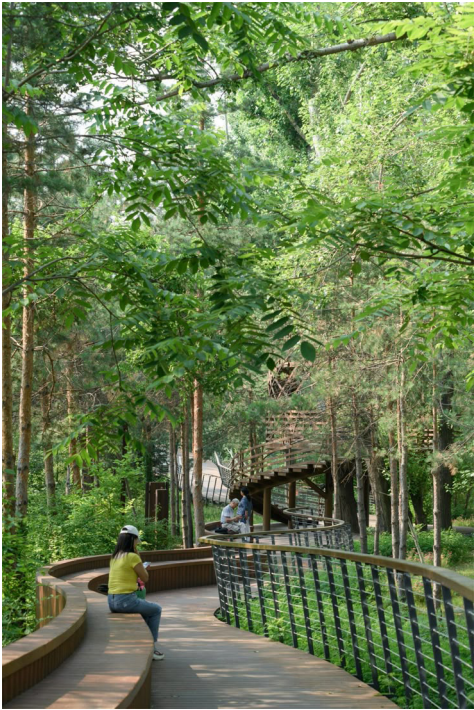
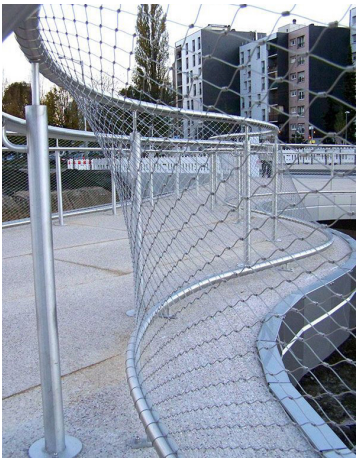


Concrete Planks

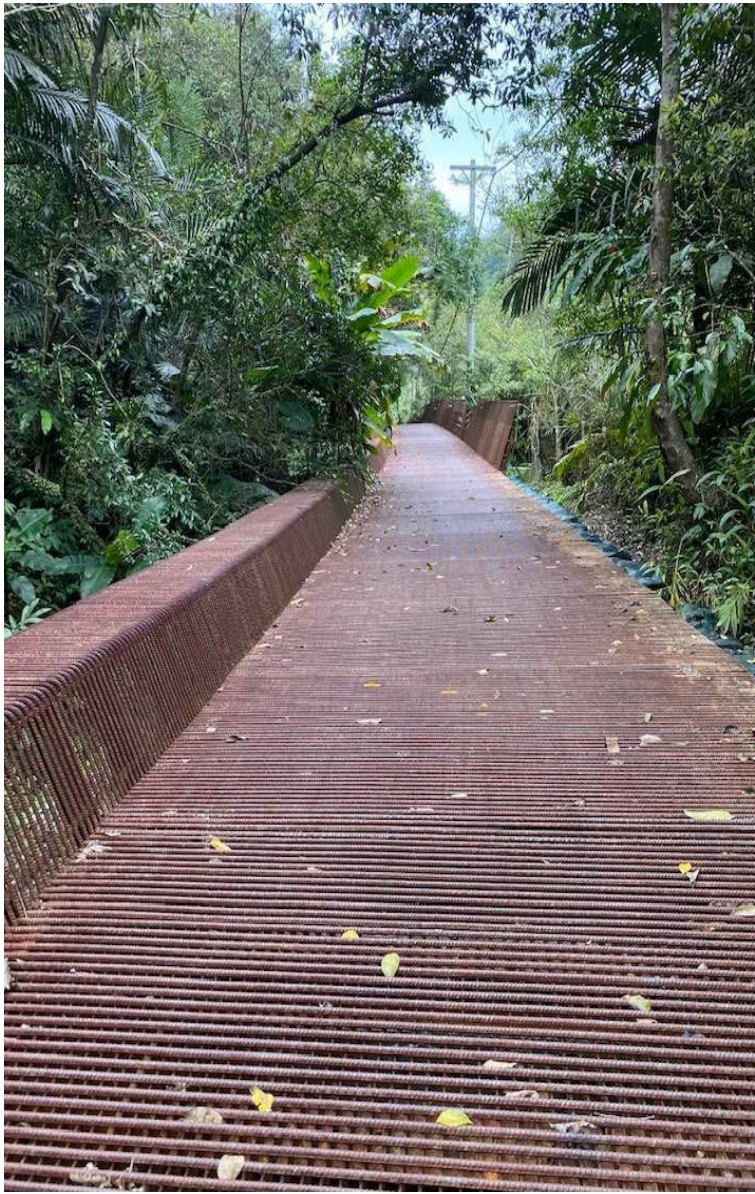


Laser Cuttings

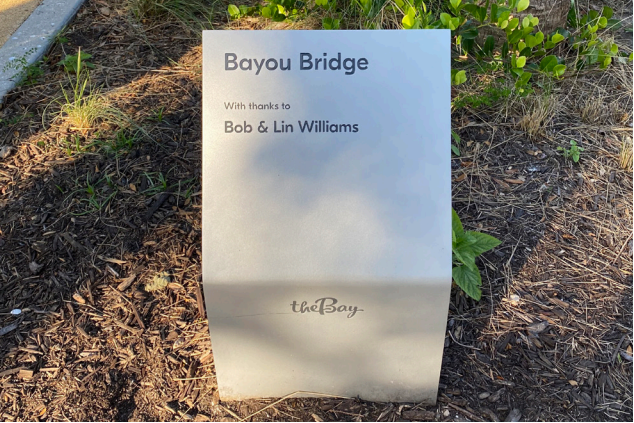
ELEVATED BOARDWALK RAILING



INTEGRATING PLAY AND MULTI-GENERATIONAL OPPORTUNITIES



SIGNAGE



EXISTING PLANTING PALETTE

X - Indicates plants to be removed from planting palette.

SHADE TREES



Live Oak



Red Bay



Gumbo Limbo



Pigeon Plum



Wax Myrtle

PALM TREES



Silver Saw Palm



Coconut Palm

ACCENTS AND SHRUBS



Sea Grape



Birds of Paradise



Crinum Lily



Sand Cordgrass



Banana



Cardboard Palm



Cocoplum



Croton



Liriope



St. Augustine Floritam



Silver Buttonwood

PROPOSED PLANTING PALETTE

✓ - Indicates plants to be added to planting palette.

SHADE TREES



Live Oak



Gumbo Limbo



Pigeon Plum



Green Buttonwood



Black Mangrove



White Mangrove



Bay Cedar



Cabbage Palm

PALM TREES



Silver Palm



Thatch Palm



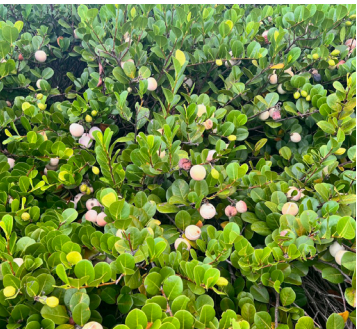
Sea Grape



Sand Cordgrass



Cardboard Palm



Cocoplum



Silver Buttonwood



Sevenyear Apple

ACCENTS/SHRUBS

GRASSES

GROUDCOVER



Saw Palmetto



Firebush



Spiderlily



Beachelder



Saltmeadow Cordgrass



Bitter Panicgrass



Beach Sunflower

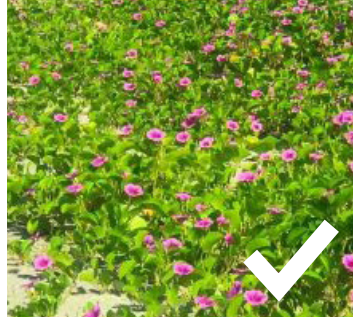


Sea Lavender

VINES



Wild Sage



Railroad Vine



Shoreline Purslane

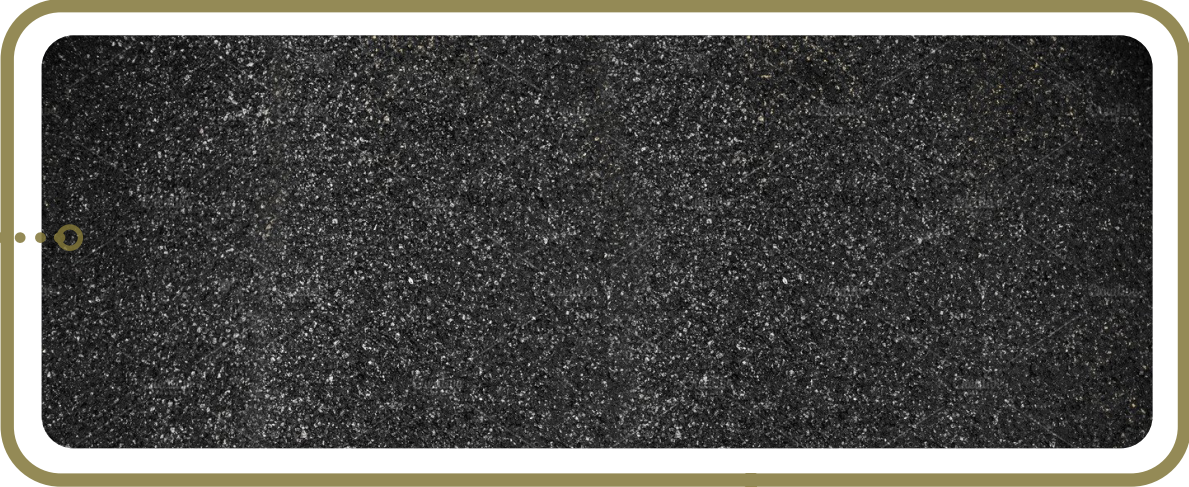


Beach Bean

PARK(ING) AREA & MATERIALITY

1

Asphalt



2

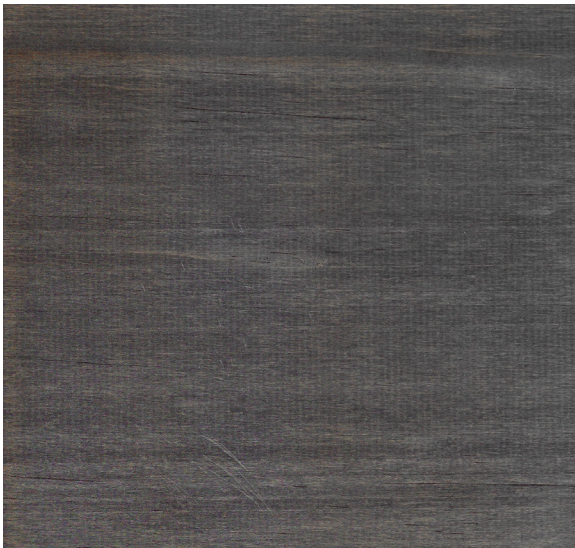
Alternate Material

2



BUILDING MATERIALITY

Accoya



Corrugated metal panels



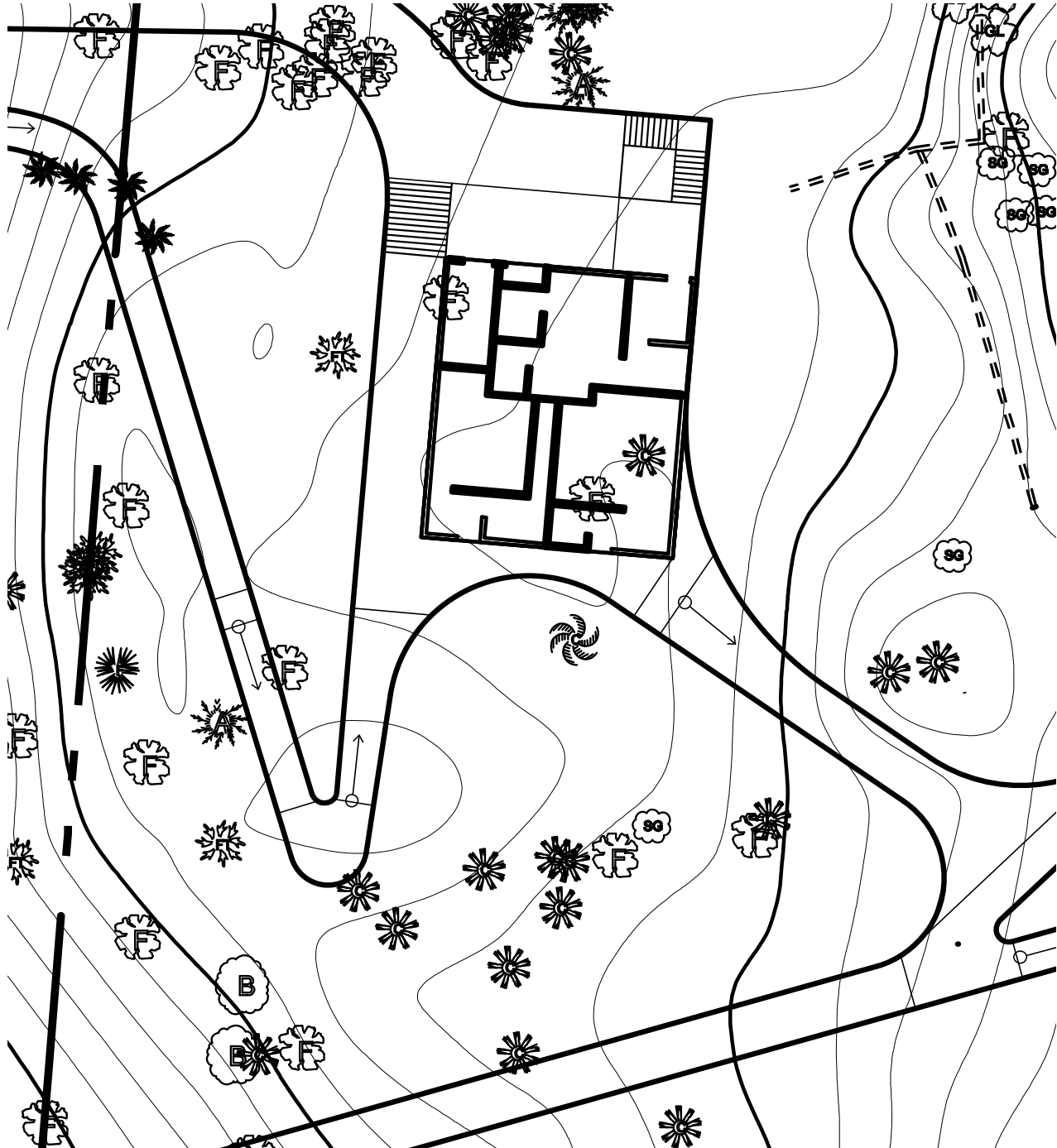
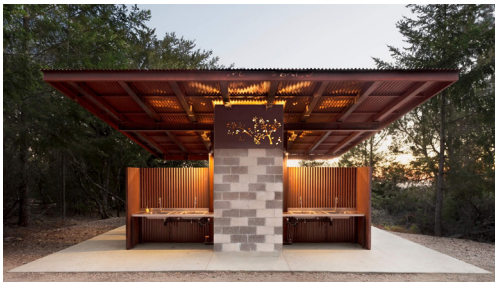
Steel mesh guardrails



Oyster shell material



Roof cut-outs



GATEHOUSE AND SHADE CANOPY



Example of shade canopy.

