

South Jupiter Dune Restoration Project

A Palm Beach County Shore Protection Project

Before



The dune suffered severe damage from Hurricane Irma, September 2017

After



Newly constructed dune after completion of the 2016 dune restoration. March 2016

Project Location

- Northern Palm Beach County (PBC), approximately 1.5 miles south of the Jupiter Inlet.
- Project area is from the Xanadu community south to the Jupiter Reef Club.

The Challenge

- PBC's dunes are vulnerable to severe storm impacts, human activity, and invasive nonnative vegetation.

The Solution

- Restore damaged dune by adding sand and stabilize the dune by planting native vegetation.
- Create beach access with dune crossovers to minimize disturbance.

Benefits

- Restores beach habitat.
- Provides sea turtle nesting habitat.
- Healthy dunes naturally protect the shoreline from erosion.
- Native salt-tolerant dune vegetation traps wind blown sand, collects it around the plant, and builds up the dune and surrounding beach.

How You Can Protect Dunes

- Use dune walkovers.
- Do not walk on dune vegetation or place towels or beach chairs in the dune.
- Remove invasive exotic dune plants.
- Limit beach raking.

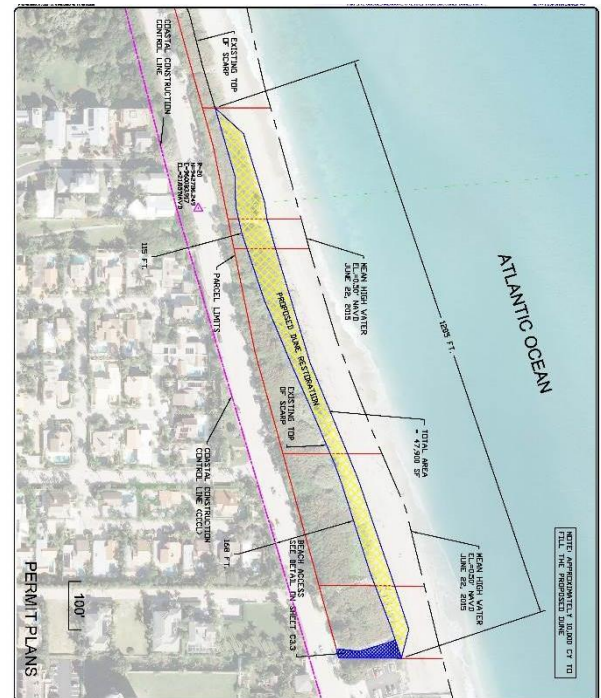
Connect with the Department of Environmental Resources Management



Project Overview

- The South Jupiter Dune Restoration project area is a part of Segment 2 of the North County Comprehensive Shore Protection Project.
- The dune was previously restored in 2016.
- In 2017 Hurricane Irma caused significant erosion to the project area.
- \$255,471 in Federal Emergency Management Agency disaster assistance will be used to construct the project.
- Construction is scheduled to begin in mid February 2020.
- Construction should take approximately two weeks and will be completed no later than February 29, 2020.
- Work will occur during daylight hours only.

Project Plans



Project Partners

Palm Beach County, Florida Department of Environmental Protection, Federal Emergency Management Agency



Palm Beach County Board of County Commissioners
 Department of Environmental Resources Management
 2300 North Jog Road - Fourth Floor, West Palm Beach, FL 33411-2743
 Phone: 561-233-2400 www.pbcgov.com/erm
 Like us on Facebook www.facebook.com/PBCERM

Published February 2020