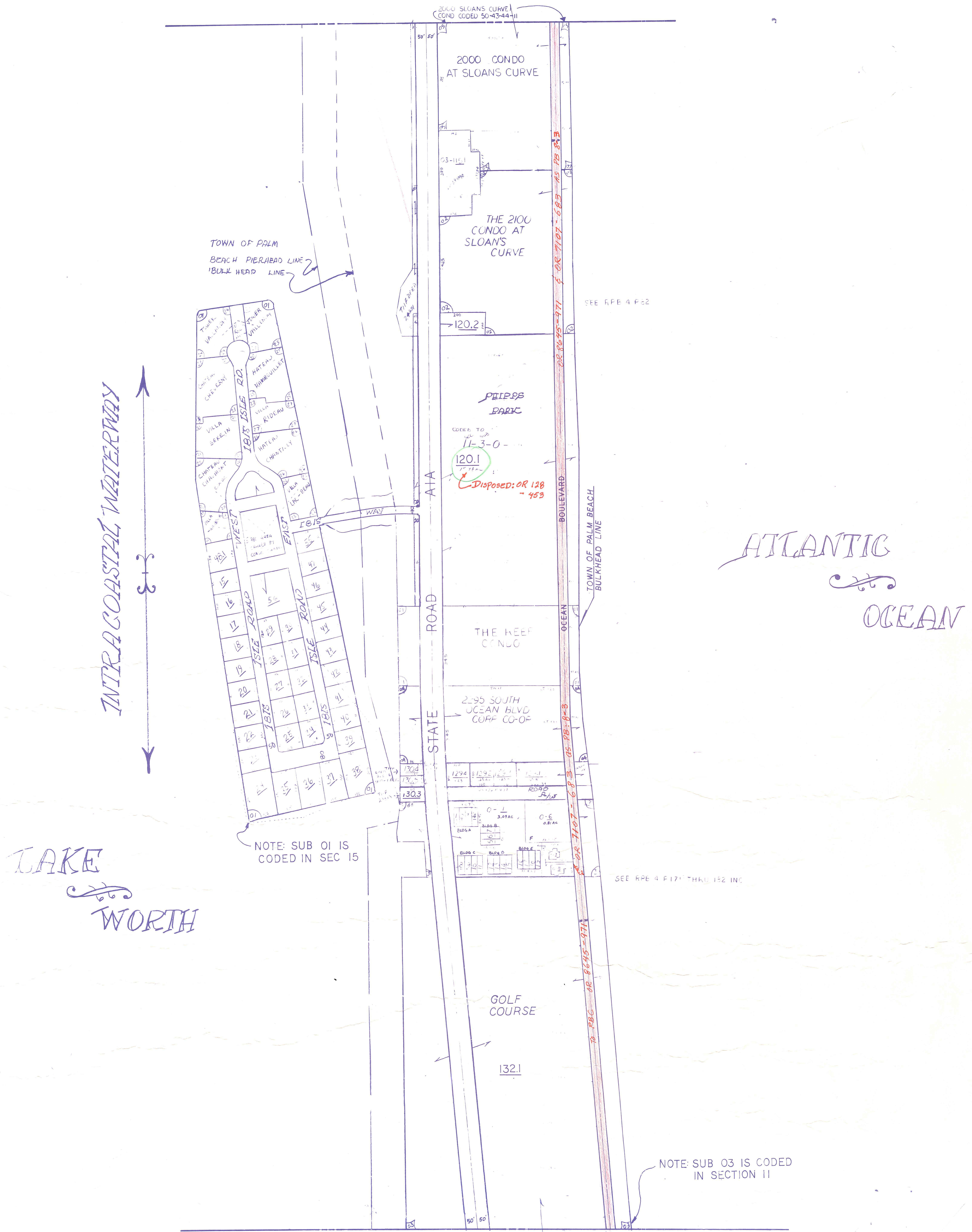
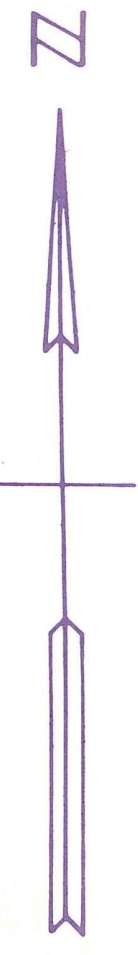


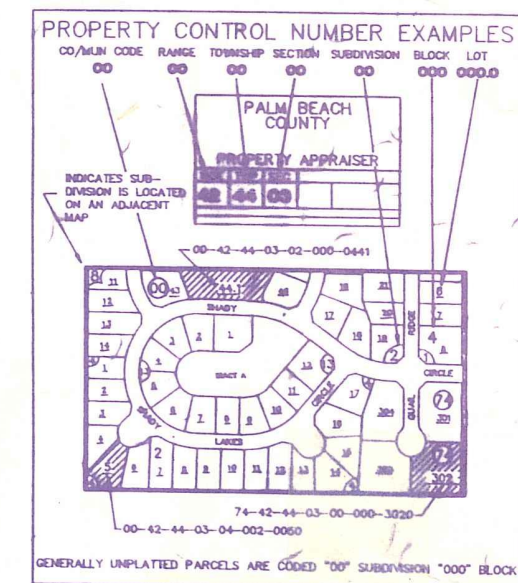
Palm Beach County (County) makes no representation or warranties whatsoever on the attached / enclosed information reflected herein pertaining to easements, rights-of-way, setback lines, reservations, agreements, and other similar matters. The information provided herein should not be relied upon by the requesting party to confirm the existence / non-existence of facts contained herein.



- 01 THE REEF CONDO (1975)
- 02 THE 2100 CONDO AT SLOANS CURVE (1981)
- 03 TRES VIDAS OF PB.
- 04 2295 SOUTH OCEAN BLVD. CORP. (HARBOR HILLS) CO-OP

NOTE: ALL OF SECTION 14 IS IN PALM BEACH - 50

NOTE:  
NOT TO BE REPRODUCED IN ANY FORM EXCEPT BY EXPRESS WRITTEN CONSENT FROM THE PALM BEACH COUNTY ASSESSOR.  
Information shown hereon is compiled from the best available sources and CANNOT be used for surveys or land transfers of any type.



A-23

PALM BEACH COUNTY  
GARY R. NIKOLITS  
PROPERTY APPRAISER

RGE	TWP	SEC	AERIAL
43	44	14	NO 11/80
SCALE	1"=200'		
DRAWN BY	John B. ...		
UPDATED			