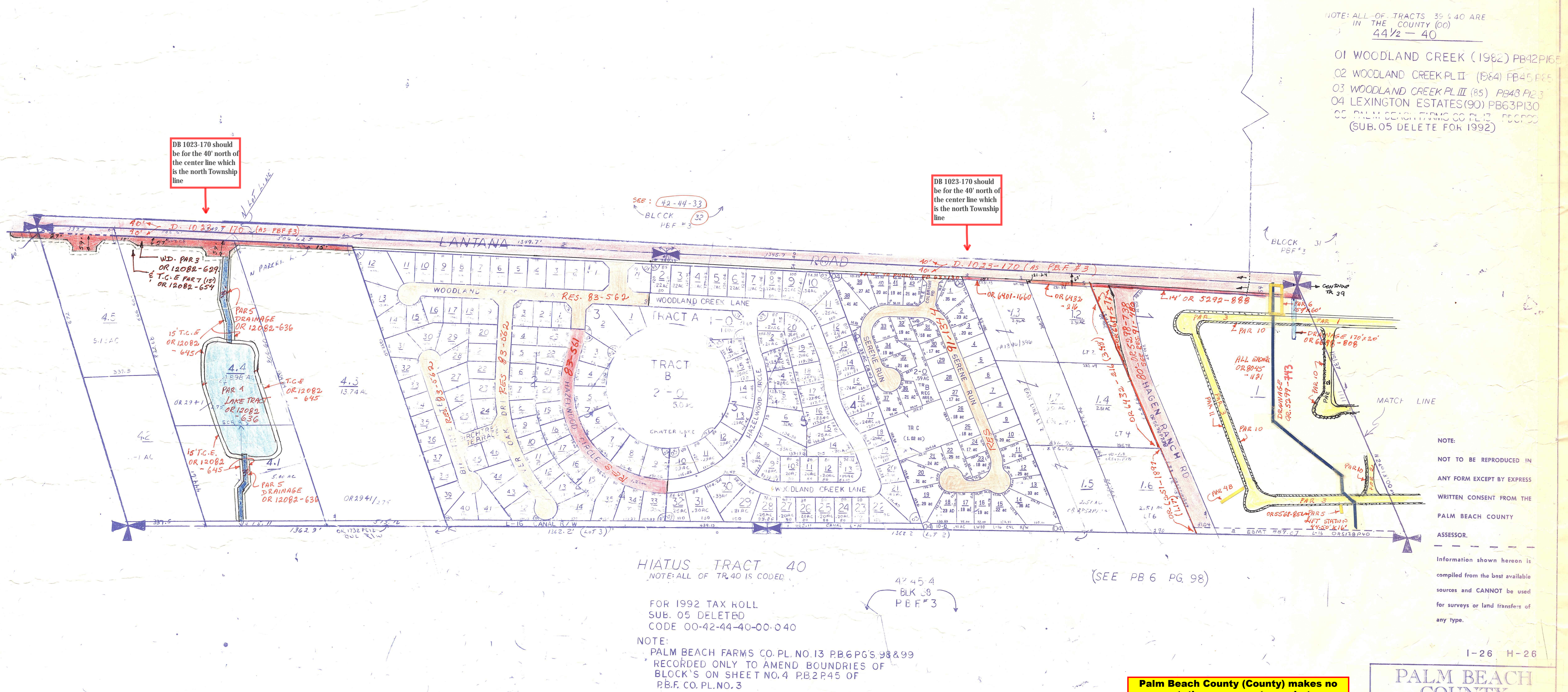


See RP Book 2 Page 27  
for CR 812 (Lantana Rd)

State Rd No. S-812 (Lantana Rd)  
80' R/W per FDOT R/W Map  
Sec No. 9353-151

NOTES:  
- P.B.C. Disposed To D.O.T  
N. 40 of 461, 1, 2 (TR 39)  
by D.B. 983 - 411



NOTE:

NOT TO BE REPRODUCED IN  
ANY FORM EXCEPT BY EXPRESS  
WRITTEN CONSENT FROM THE  
PALM BEACH COUNTY  
ASSESSOR.

\_\_\_\_\_

Information shown hereon is  
compiled from the best available  
sources and CANNOT be used  
for surveys or land transfers of  
any type.

I-26 H-26

**Palm Beach County (County) makes no representation or warranties whatsoever on the attached / enclosed information reflected herein pertaining to easements, rights-of-way, setback lines, reservations, agreements, and other similar matters. The information provided herein should not be relied upon by the requesting party to confirm the existence / non-existence of facts contained herein.**

PALM BEACH  
COUNTY  
GARY R. NIKOLITS

PROPERTY APPRAISER				
RGE	TWP	SEC	RS	AERIAL
42	44 1/2	HIATUS	30 40	5610 No 324
SCALE	1" = 200'			
DRAWN BY	OLLIS <del>1/2</del> 1/2			
UPDATED	4-21-93 DJF			