

Palm Beach County (County) makes no representation or warranties whatsoever on the attached / enclosed information reflected herein pertaining to easements, rights-of-way, setback lines, reservations, agreements, and other similar matters. The information provided herein should not be relied upon by the requesting party to confirm the existence / non-existence of facts contained herein.

NOTE  
ALL LOT DIMENSIONS TO CENTER  
LINE OF ROAD - SECTION 12

NOTES.

Bill of Sale from American Community Systems Inc. for on site (both) Buttonwood Plat 1 & 2, Water Distribution System to PBC. OR 4372-1537.

\* SUBORDINATION OF UTILITY INTEREST  
BTWN PBC & FRL. OR 5182-1430/35.

LAKE WORTH RD.  
OT. CASE N° 76-2836 CA (4) OF 2  
OR. 2584-781

LOTS ARE NOT TO SCALE

PARTS IN COUNTY - 00  
PARTS IN GREENACRES - 18

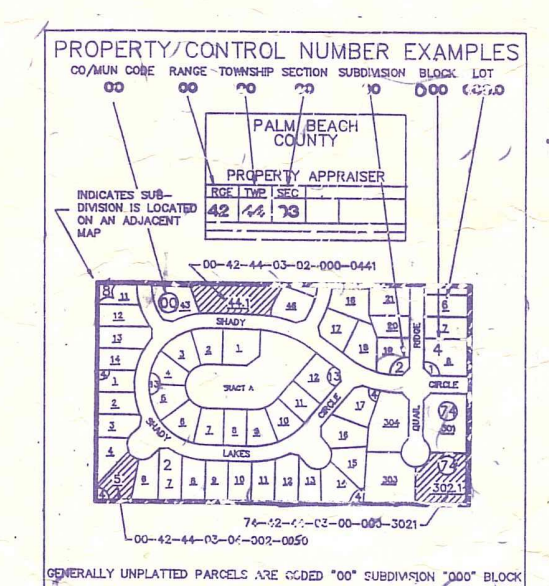
TO FIND SUBS THAT ARE NOT SHOWN  
REFER TO BLOCK 22 OF THE PALM  
BEACH FARMS -

TYPICAL LOTS

<p>66. A B D C</p> <p>LTS: 27, 28, 29, 34, 35, 36, 38, 39, 43, 44, 45, 46, 48</p>	<p>76. A B D C</p> <p>LTS: 26, 30, 31, 35, 33, 37, 40, 41, 42, 47, 49, 50</p> <p>A = CO10 B = CO50 C = CO30 D = CO40</p>
---	--

- PART ABANDONED OR1952 P1969
- SW01 PLAT OF PINECREST MOBILE HOME ESTATES PB26-229
  - SW02 POINCIANA PLACE PHASE I PB30-91
  - SW03 " " CONDOS PB31-191
  - SW04 RAMBLEWOOD (1977) PB31-214
  - SE05 HEATHER ESTATES (1977) PB33-127
  - NE06 SEVEN SPRINGS PL I (1978) PB33-127
  - SW07 POINCIANA PLACE CONDO A (1979) B (1979)
  - SW08 " " " PHASE I (1979)
  - REPLAT (1979) PB34-160
  - SW09 SUNCREST RIDGE SECT. 1 (CODED 09 in 42-43-27) AM 24
  - SW10 POINCIANA PLACE PHASE II-A (1979) PB35-54
  - SW11 RAMBLEWOOD II (1979) PB35-78
  - NE12 BUTTONWOOD PLAT I (1979) PB35-113
  - NE13 CHICKASAW MANOR (1979) PB35-189
  - NE14 CHICKASAW MANOR UNIT TWO (2D) PB38P72
  - NE15 AMBASSADORS T CONDO (1980) (A)
  - NE16 POINCIANA PLACE PHASE II (1980) PB40P160
  - NE17 BARCLAY AT POINCIANA COND (1980) (A)
  - NE18 CARLISLE AT POINCIANA COND (1980) (A)
  - NE19 POINCIANA PLACE PHASE II C (1980) (A)
  - NE20 LORCHESTER AT POINCIANA COND (1980) (A)
  - NE21 POINCIANA PLACE PHASE IIIA UNIT 2 (1980) (A)
  - NE22 POINCIANA PLACE PHASE IIIB TWINHILLS (1980) (A)
  - NE23 ESSEX AT POINCIANA COND (1980) (A)
  - NE24 POINCIANA LAKES BLDG AIF COND (1980) (A)
  - NE25 LUCERNE PARK PLAT NO 1 (2A) PHASE 1 (1980) (A)
  - NE26 GRAMERCY AT POINCIANA COND (1980) (A)
  - NE27 LUCERNE PARK COND (1980) (A)
  - NE28 POINCIANA PLAZA PHASE II COND (1980) (A)
  - NE29 SEVEN SPRINGS PLAT NO 2 (2A) PHASE 1 (1980) (A)
  - NE30 BUTTONWOOD PLAT 2 (2D) PHASE 1 (1980) (A)
  - NE31 VILLAGES OF WOODLAKE TWINHILLS (1980) (A)
  - NE32 VILLAGES OF WOODLAKE PL 3 (1980) (A)
  - NE33 VILLAGES OF WOODLAKE PL NO 7 REPT (1980) (A)
  - NE34 TOWN CLUB OF GREENACRES PHASE 1 (1980) (A)
  - NE35 LUCERNE PARK NO 2 PHASE 1 (1980) (A)
  - NE36 GREENACRES PLAZA PHASE 1 (1980) (A)
  - NE37 HARMICH COURTS PHASE 1 (1980) (A)
  - NE38 BUTTONWOOD PLAZA PHASE 1 (1980) (A)
  - NE39 LUCERNE PARK PL 3 - BLK 22
  - NE40 BARCLAY SQUARE (7) PHASE 1 (1980) (A)
  - NE41 POINCIANA PLACE PH 2-C REPL PHASE 1 (1980) (A)
  - NE42 LAKE WORTH WILLOW CORP CENTER (1980) (A)
  - NE43 HAMLET AT POINCIANA COND - BLK 22
  - NE44 PARK POINTE - BLK 22
  - NE45 SEVEN SPRINGS PL 2 AMND (1980) (A)
  - NE46 PARK POINTE PL 2 (SEE BLK 22)
  - NE47 VILLAGES OF WOODLAKE PL 4 (1980) (A)
  - NE48 FOUNTAINVIEW AT SPRING LAKES COND (91)
  - SE 49 VILLAGES OF WOODLAKE PL 5 (91) PB66 P107
  - SE 50 GREENACRES CITY BRANCH LIBRARY (91) PB67 P9

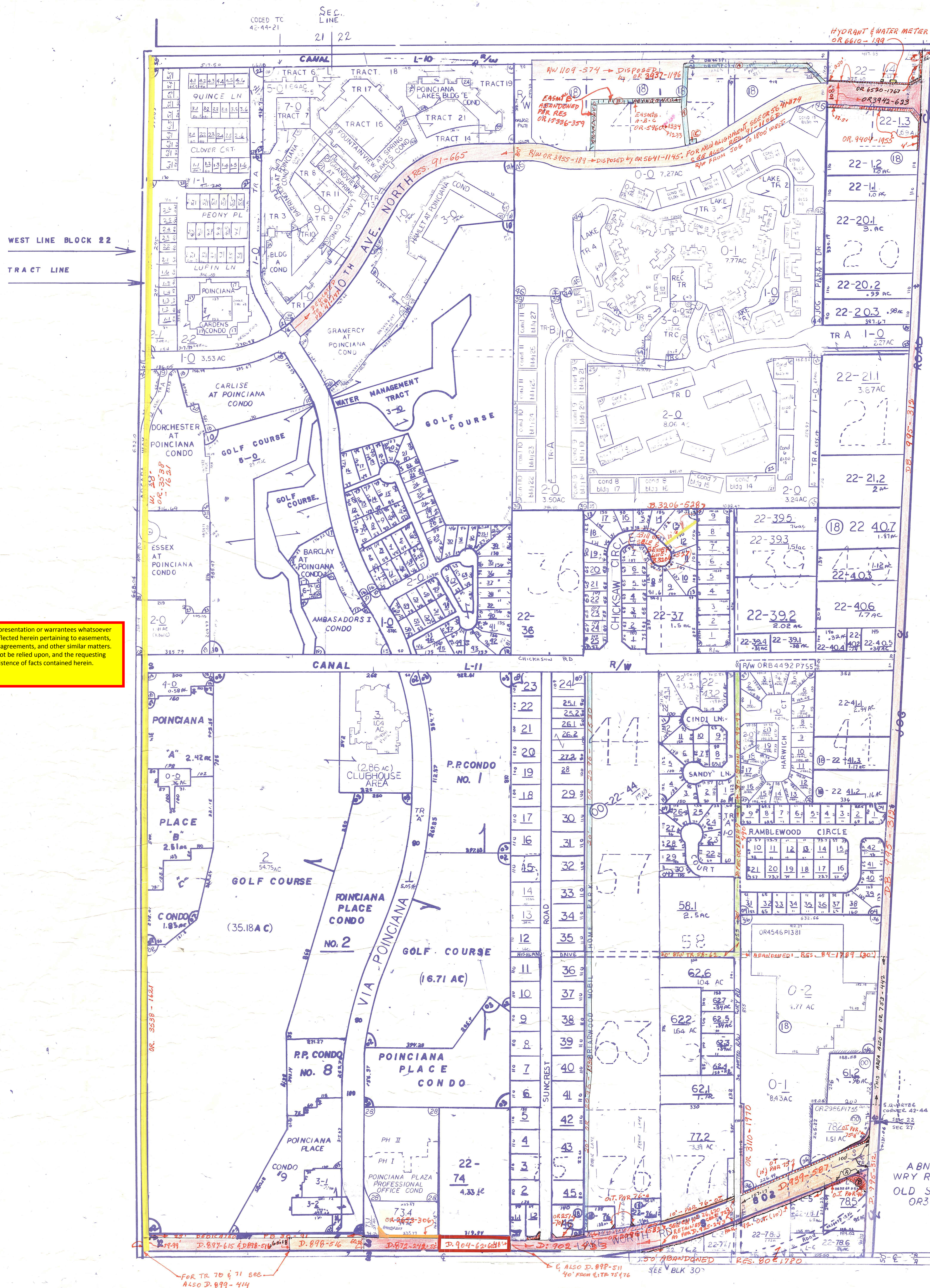
NOTE:  
NOT TO BE REPRODUCED IN  
ANY FORM EXCEPT BY EXPRESS  
WRITTEN CONSENT FROM THE  
PALM BEACH COUNTY  
PROPERTY APPRAISER  
Information shown hereon is  
compiled from the best available  
sources and CANNOT be used  
for surveys or land transfers of  
any type.



PALM BEACH COUNTY  
GARY R. NIKOLITS  
PROPERTY APPRAISER

RGE	TWP	SEC	1/4	AERIAL
42	44	22	EAST	NO 63-67A
SCALE		1" = 200'		
DRAWN BY		J. BUSH 17 AUGUST 9		
UPDATED				

Information Modify Date 5/20/2016  
Burger King  
Deed for Parcel in Sec 27 - OR 4270-1322  
Deed for Parcel in Sec 22 - OR 3421-1965  
Deed for RW Parcel 101 in Project 2012500 - OR 23066-1543 (has wrong call)



NOTE:  
PALM BEACH FARMS CO.  
PL. 3 IS CODED 05 IN  
27-43-42

PLATS NOT FOUND ON THIS MYLAR  
BUT LISTED BELOW MAY BE FOUND  
IN SECTION 42-44-22 (EAST 1/2)

- SW 01 PL. OF PINECREST MOBILE HOMES (PLAT AMENDED) PB 26-229  
SW 02 POINCIANA PLACE PHASE 1 (SEE SEC FILE) PB 30-91  
SW 03 " " CONDOS  
SW 04 RAMBLEWOOD (1977) PB31-191 (B)  
SE 05 HEATHER ESTATES (1977) PB31-214  
NE 06 SEVEN SPRINGS PL. (1978) PB33-127  
SW07 POINCIANA PLACE CONDO A,B,C (1979)  
SW08 " " PHASE I, REPLAT (1979) PB34-160  
SW09 SUNCREST RIDGE SEC. I (CODED 09 IN 42-43-27) AM24  
NW10 POINCIANA PLACE, PHASE II (1979) PB 35-54  
SW 11 RAMBLEWOOD TWO (1979) PB 35-78  
NE 12 BUTTWOOD PLAT I (1979) PB 35-113  
NE 13 CHICKSAW MANOR (1979) PB35-189  
NE 14 CHICKSAW MANOR UNIT TWO (1980) PB 36-72  
NW15 AMBASSADORS T CONDO (1981) PB 40 P51  
NW16 POINCIANA PLACE, PHASE II (B) (1981) PB 40 P51  
NW17 BARCLAY AT POINCIANA CONDO (1981) PB 40 P51  
NW18 CARLISLE AT POINCIANA CONDO (1982) PB 40 P51  
NW19 POINCIANA PLACE PHASE II-C (1982) PB41P47  
NW20 DORCHESTER AT POINCIANA CONDO (1982) PB 40 P51  
NW 21 POINCIANA PLACE PHASE III-A (1982) PB42P56  
NW 22 POINCIANA PLACE PHASE III-B (1982) PB42P50  
NW23 ESSEX AT POINCIANA CONDO (1983) PB 40 P51  
NW 24 POINCIANA LAKES BLDGASE CONDO (1984) PB45P72  
NW25 LUCERNE PARK PL NO. 1 (1984) PB45P72  
NW26 GRAMERCY AT POINCIANA CONDO (1985) PB 40 P51  
NW 27 LUCERNE PARK CONDO (1985) PB 40 P51  
28 POINCIANA PLAZA PROFESSIONAL OFFICE CONDO - 85  
29 SEVEN SPRINGS PLAT NO. 2 (1980) PB37P114 (B) SEC 22-42-42  
NE 30 BUTTWOOD PL 2 (1980) PB39P50 (B)  
31 VILLAGES OF WOODLAKE TWNHS (1980) PB39P171 (B)  
32 VILLAGES OF WOODLAKE TWNHS (1982) PB 43P157 (B)  
33 VILLAGES OF WOODLAKE PL NO2 REPL PB 45P172 84 (B)  
34 TOWN CLUB OF GREENACRES PB 49P158 (B)  
35 LUCERNE PARK PL NO 2 PB49P196 (B)  
36 GREENACRES PLAZA (86) PB50P116 (B)  
37 HARWICH COURTS (86) PB51P200 (B)  
38 BUTTWOOD PLAZA (86) PB52P29 (B)  
39 LUCERNE PARK PL 3 (87) PB52P194 (B)  
40 BARCLAY SQUARE - SEE E1/2 OF SEC  
NW41 POINCIANA PLACE PH 2-C REPL (87) PB54P25 (B)  
42 LAKE WORTH WILLOW CORP CENTER - SEE E1/2 OF SEC  
NW43 HAMLET AT POINCIANA CONDO (87)  
NW44 PARK POINTE PL I (88) PB 58P103 (B)  
45 SEVEN SPRINGS PL 2 AMND (SEE E 1/2 OF SEC)  
NW 46 PARK POINTE PL 2 (90) PB62P135 (B)  
47 VILLAGES OF WOODLAKE PL 4 (SEE E 1/2 OF SEC)  
NW 48 FOUNTAINVIEW AT SPRING LAKES CONDO (91)  
49 VILLAGES OF WOODLAKE PL 5 (91) PB66P107 SEE E 1/2 SEC 22  
50 GREENACRES CITY BRANCH LIBRARY (91) PB67 P9 (SEE E 1/2 SEC 22)

# NOTES

- ① COUNTY ABANDONMENT: RES. 73-597  
TRACTS 6 THRU 15  
" 26 " 35  
" 46 " 55  
" 65 " 69  
INCLUDING 30' R/W BTWN. 11-15 & 26-30  
AND 30' R/W BTWN. TRS 51-55 & 65-69  
OR. 2233-851.  
② WEST. PENINSULAR TITLE COMPANY V. P.R.C.  
OR. 5608-1286, SEE P.B. FARMS PLAT N°3 MAP  
FOR PLATTED RD R/W IN BLK 22  
ABND WRY RD OR2676P531  
OLD SR 802 & 50' RESERVATION BET BIKS 22 & 30  
OR3447P1526 RES R-80-1637  
③ POINCIANA PLACE - PHASE II A = 2 DRAINAGE EASMTS.  
a. BTWN. TR 29 & 32  
b. IN TR. 14  
SEE OR 3452-160-161  
④ LAKE WORTH RD.  
D.T. CASE N° 76-2836 CA(4) 011  
OR. 2584-781

NOTE:  
NOT TO BE REPRODUCED IN  
ANY FORM EXCEPT BY EXPRESS  
WRITTEN CONSENT FROM THE  
PALM BEACH COUNTY  
PROPERTY APPRAISER  
Information shown herein is  
compiled from the best available  
sources and CANNOT be used  
for surveys or land transfers of  
any type.

PALM BEACH  
COUNTY  
GARY R. NIKOLITS  
PROPERTY APPRAISER

RGE	TWP	SEC	BLK	AERIAL
42	44	22	22	NOS 01
SCALE 1"=200'				
DRAWN BY J. BUSH 6-21-79				
UPDATED 11-27-79				

Palm Beach County (County) makes no representation or warranties whatsoever on the attached /enclosed information reflected herein pertaining to easements, rights-of-way, setback lines, reservations, agreements, and other similar matters. The information provided herein should not be relied upon, and the requesting party must confirm the existence/ non-existence of facts contained herein.

NOTE:  
SUNCREST RIDGE SEC. I IS  
CODED 09 IN 27-43-42