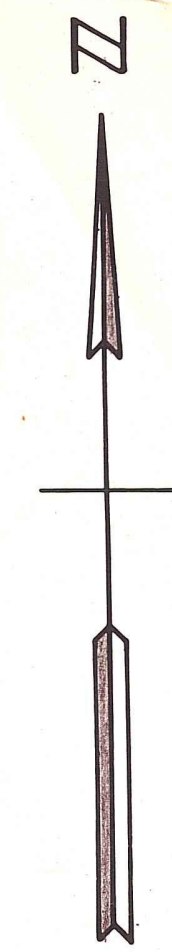


AGREEMENT BETWEEN P.B.C. (UTILITY) & DEVELOPER (HOLLYWOOD) FOR WATER & SEWER SERVICES - B. 4661-812-MISCELLANY -



AGREEMENT BETWEEN P.B.C. (UTILITY) AND ZIVAD AWADHICAN (DEVELOPER) FOR UTILITY PROVIDING WATER & SEWER SERVICES IN LANDS TO BE DEVELOPED. B. 4477-551 - MISCELLANY

Palm Beach County (County) makes no representation or warranties whatsoever on the attached / enclosed information reflected herein pertaining to easements, rights-of-way, setback lines, reservations, agreements, and other similar matters. The information provided herein should not be relied upon by the requesting party to confirm the existence / non-existence of facts contained herein.

AREA INDICATED IN ORANGE TO BE USED FOR WATER & SEWER FACILITIES AS PER AGREEMENT BETWEEN COUNTY & DEVELOPER PER 1/3770-1796 FILED IN MISCELLANY

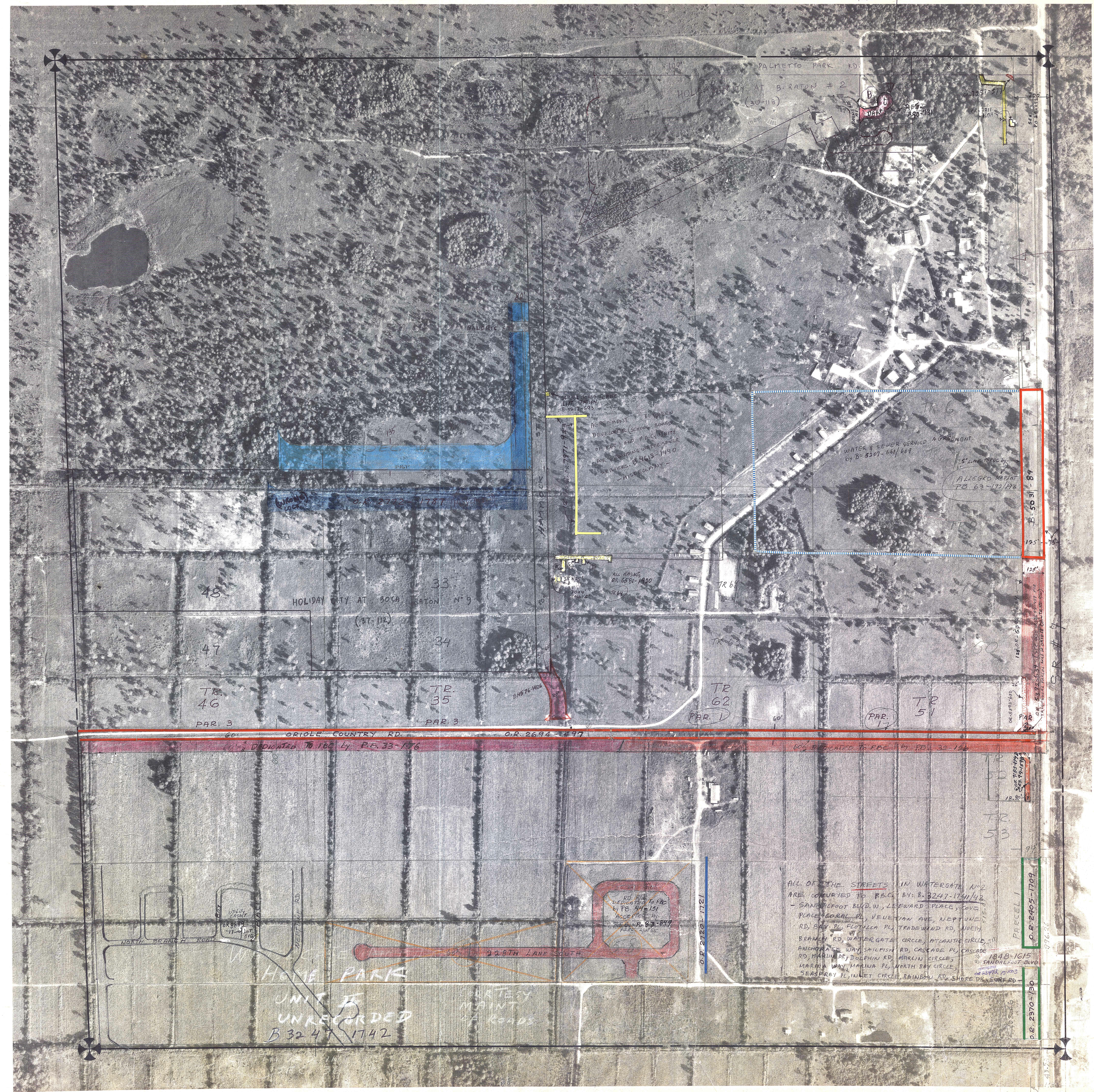
NOTE:

NOT TO BE REPRODUCED IN ANY FORM EXCEPT BY EXPRESS WRITTEN CONSENT FROM THE PALM BEACH COUNTY ASSESSOR. Information shown herein is compiled from the best available sources and CANNOT be used for surveys or land transfers of any type.

PALM BEACH COUNTY
555
DAVID L. REID
County Assessor

RGE	TWP	SEC	AERIAL
41	47	25	No. 131-A

SCALE 1"=200'



BROCKWAY, OWEN & ANDERSON ENGINEERS, INC.
ENGINEERS PLANNERS SURVEYORS
WEST PALM BEACH, FLORIDA

Aerial Photo Date - 10-23-70