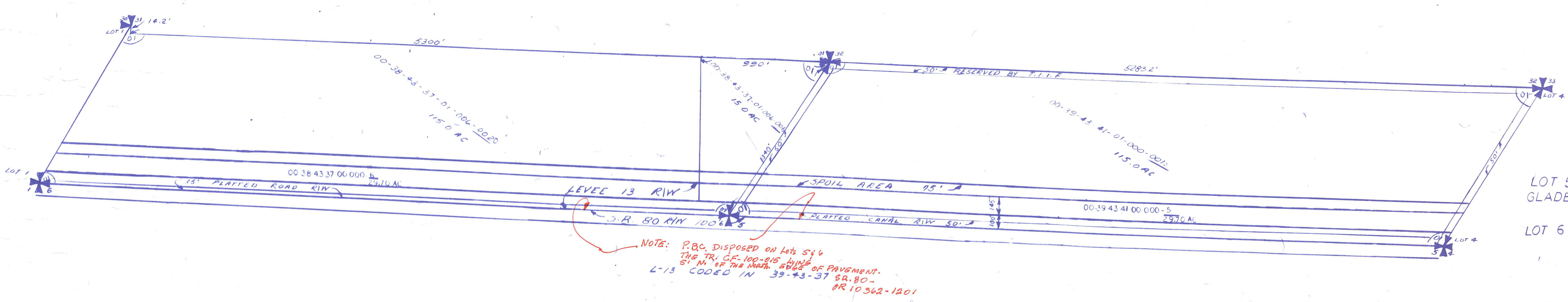
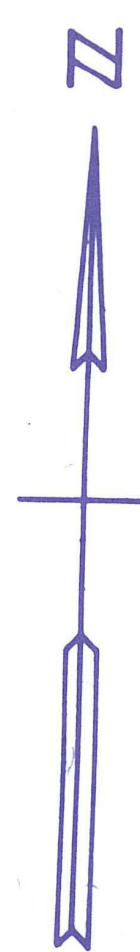


Palm Beach County (County) makes no representation or warranties whatsoever on the attached / enclosed information reflected herein pertaining to easements, rights-of-way, setback lines, reservations, agreements, and other similar matters. The information provided herein should not be relied upon by the requesting party to confirm the existence / non-existence of facts contained herein.



LOT 5
GLADELAND FARMS P.B. 10 P. 12-01
LOT 6 S/D P.B. 8- P. 84-01

ALL LOTS IN COUNTY 7 02

NOTE:
NOT TO BE REPRODUCED IN
ANY FORM EXCEPT BY EXPRESS
WRITTEN CONSENT FROM THE
PALM BEACH COUNTY
ASSESSOR.
Information shown herein is
compiled from the best available
sources and CANNOT be used
for surveys or land transfers of
any type.

CC-21 BB-21

PALM BEACH COUNTY
GARY R. NIKOLITS
PROPERTY APPRAISER

RGE	TWP	SEC	NO
39	43 1/2	LOTS 5 & 6	NO
SCALE		1"=400'	
DRAWN BY		m/10/02 SQU	
UPDATED			