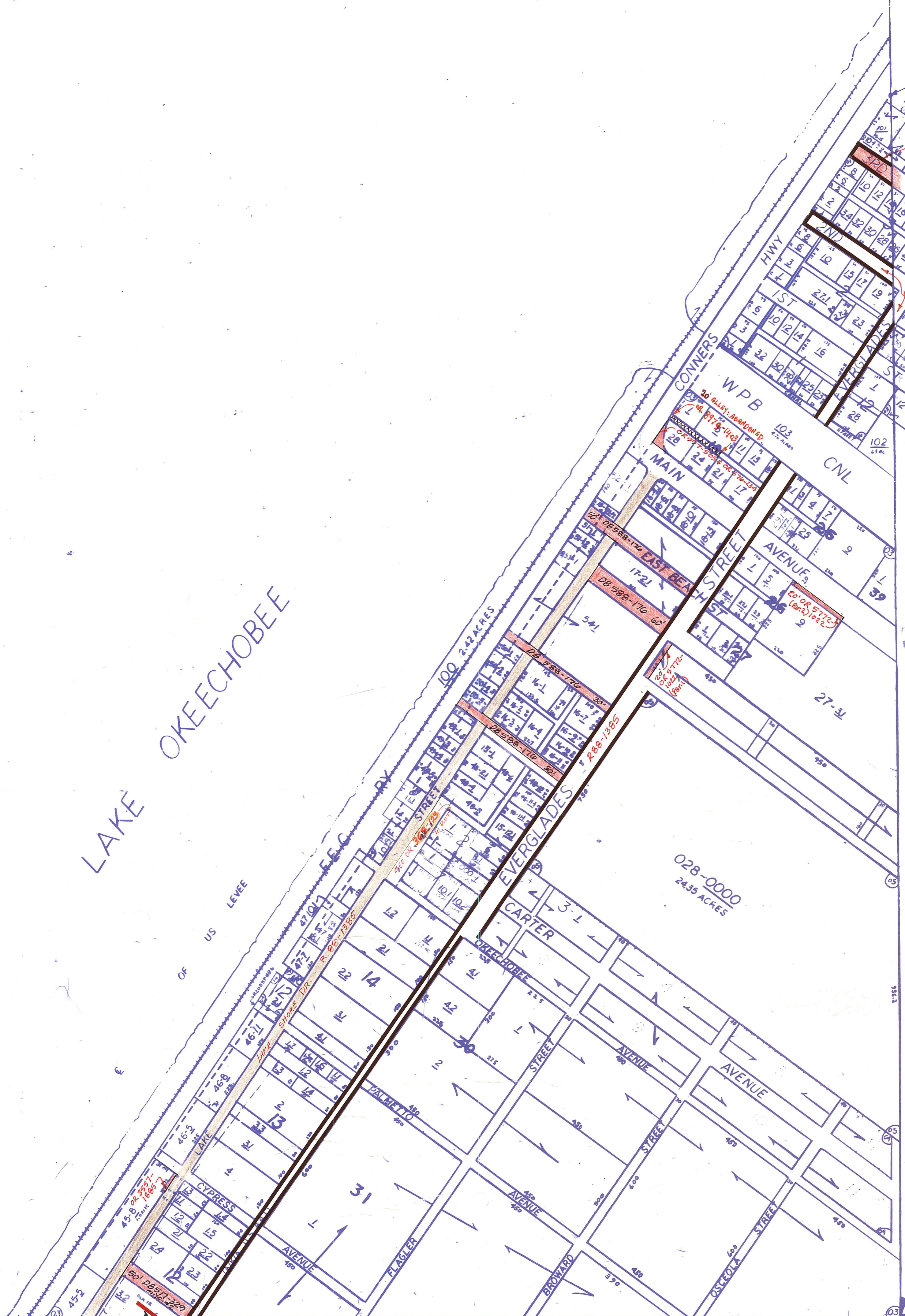
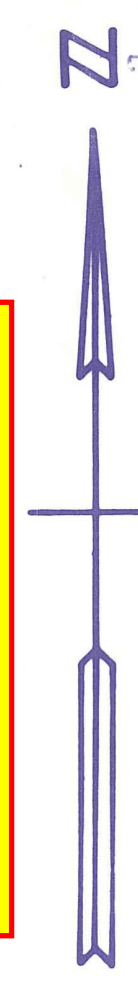


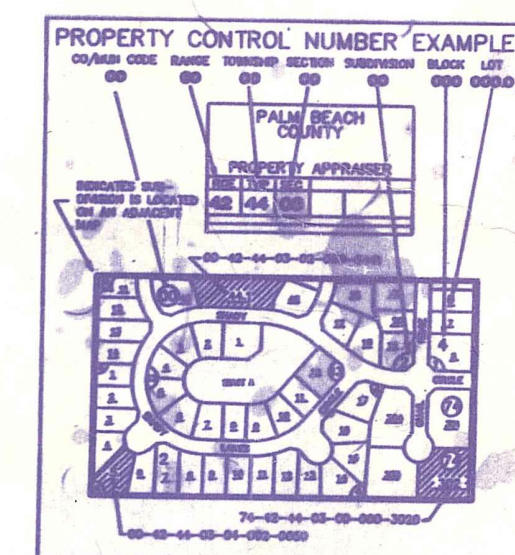
Palm Beach County (County) makes no representation or warrants whatsoever on the attached / enclosed information reflected herein pertaining to easements, rights-of-way, setback lines, reservations, agreements, and other similar matters. The information provided herein should not be relied upon by the requesting party to confirm the existence / non-existence of facts contained herein.



- NE 01 PIONEER INV CO PL 1 TOWNSITE CANAL POINT PB4 P47
- NE 02 CANAL POINT TOWNSITE ADD1 PB24 P182
- ALL 03 NEMAHA SUB PB3 P28
- E1/2 04 J E CARTERS RESUB PB14 P68
- SE 05 NEMAHA REPL OF PT OF BLKS 28,29,35,36,40,41&45

☆NOTE: ALL OF SECTION IS IN THE COUNTY-00

NOTE:
NOT TO BE REPRODUCED IN ANY FORM EXCEPT BY EXPRESS WRITTEN CONSENT FROM THE PALM BEACH COUNTY



PALM BEACH COUNTY
Misc.
PROPERTY APPRAISER

RGE	TWP	SEC	AERIAL
37	41	33	NO 339
SCALE		1:200	
DRAWN BY		OLLIS 8/1/70	
UPDATED		5/8/91	

MM-8