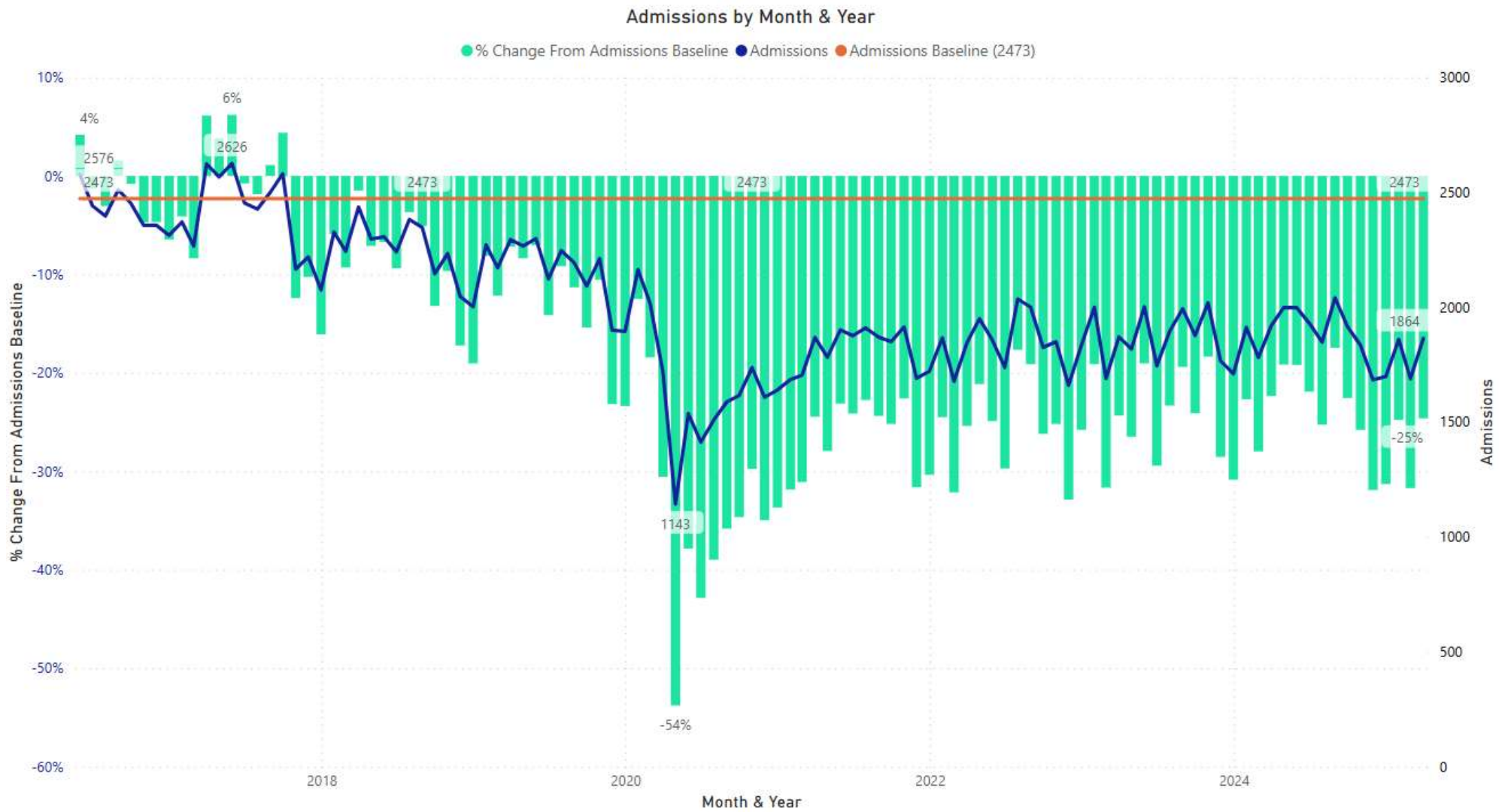


# Research Planning Unit (RPU)

Jail Trends as of: April 30, 2025

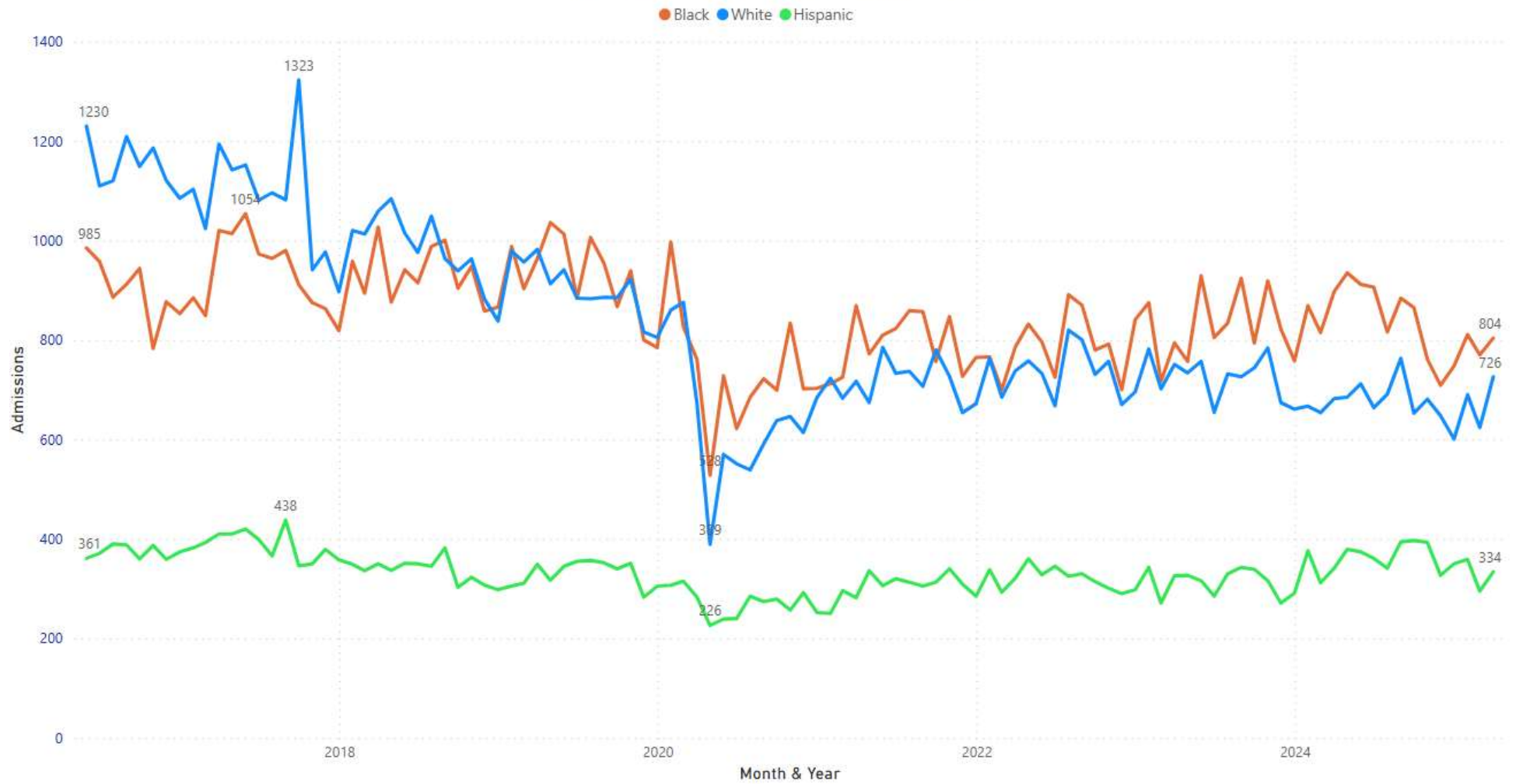
PBSO - Incarceration Management and  
Cost-Recovery System ( IMACS )

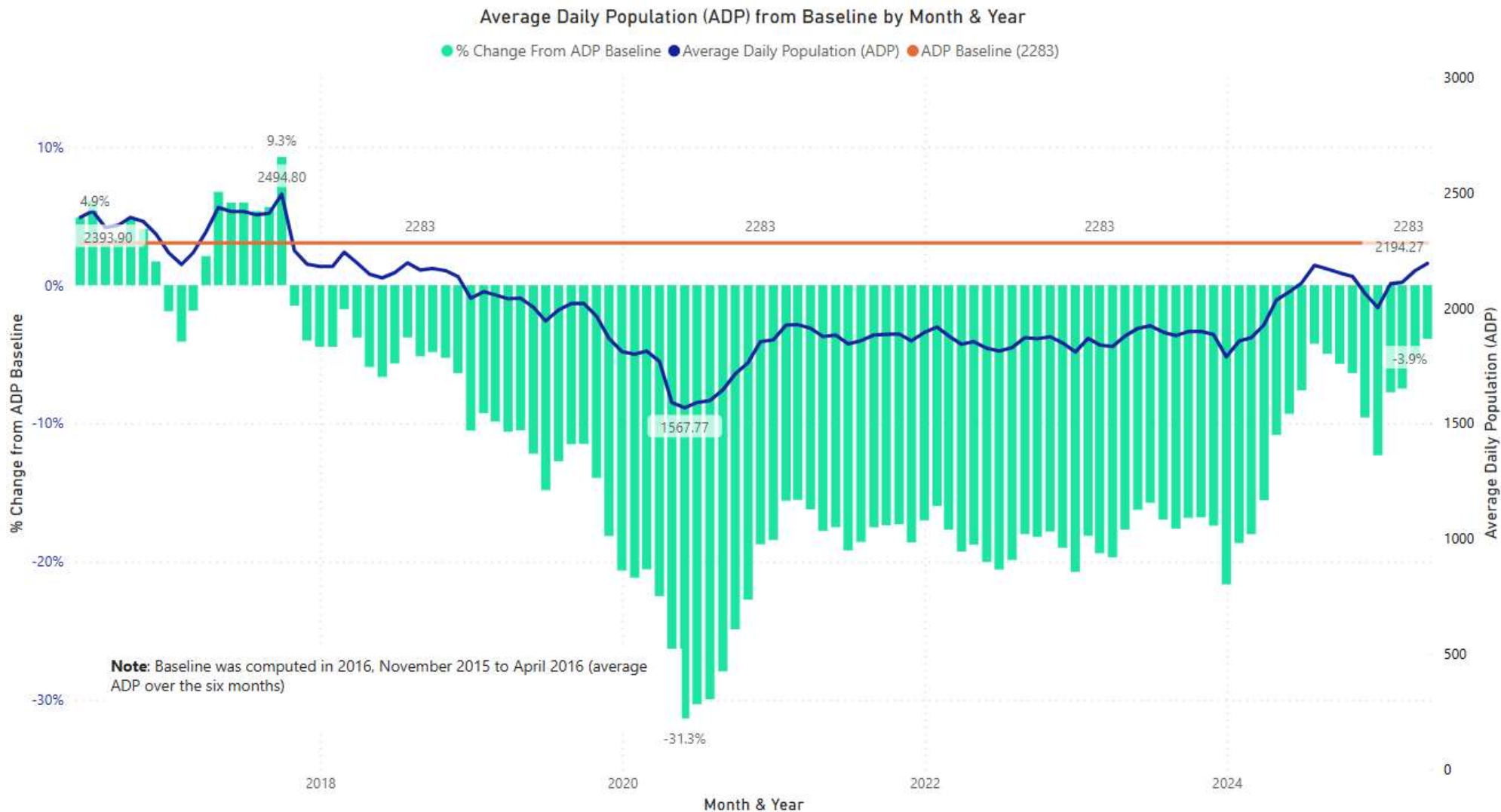
Power BI



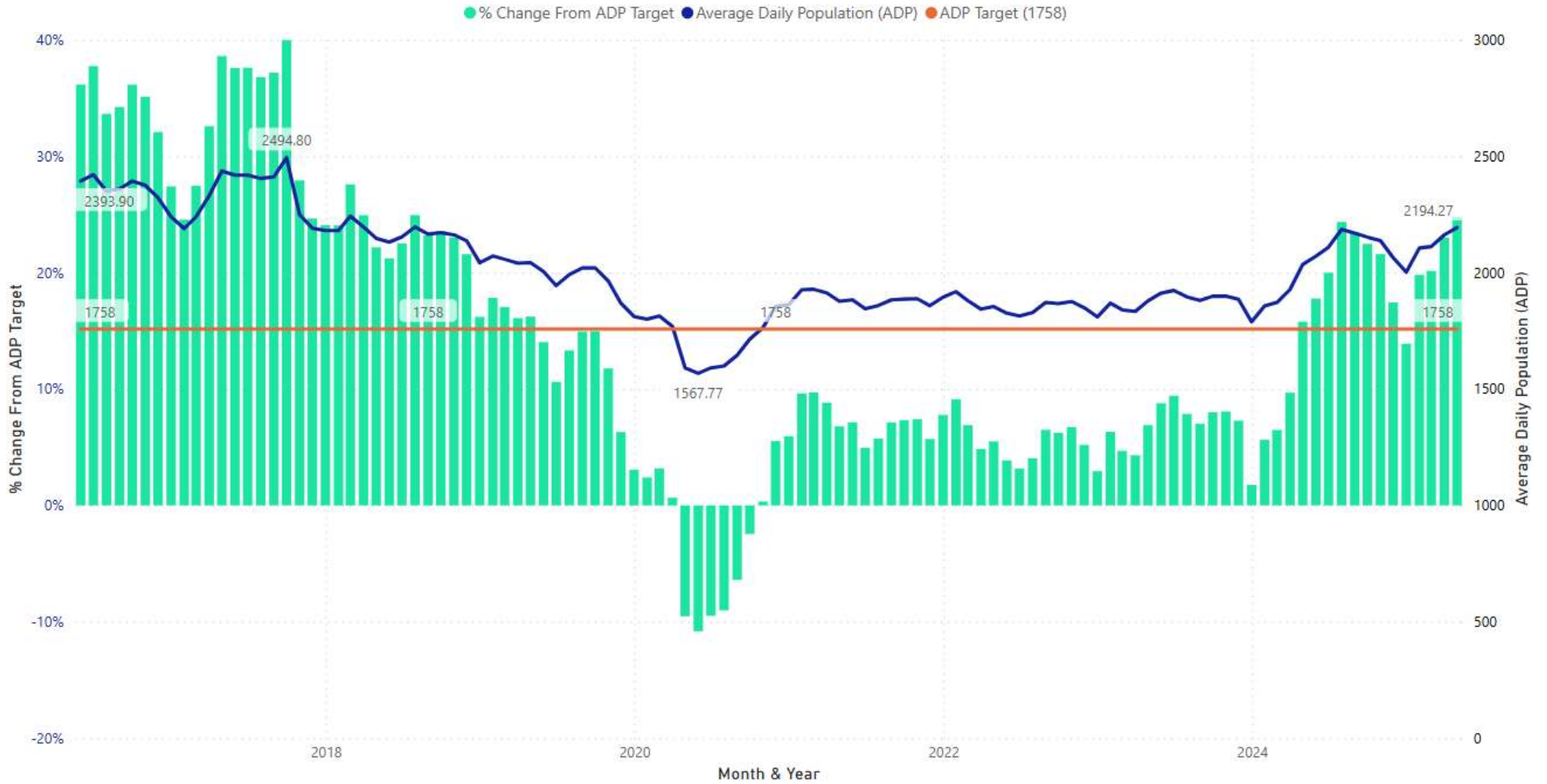


Admissions by Race & Ethnicity by Month & Year





Average Daily Population (ADP) from Target by Month & Year



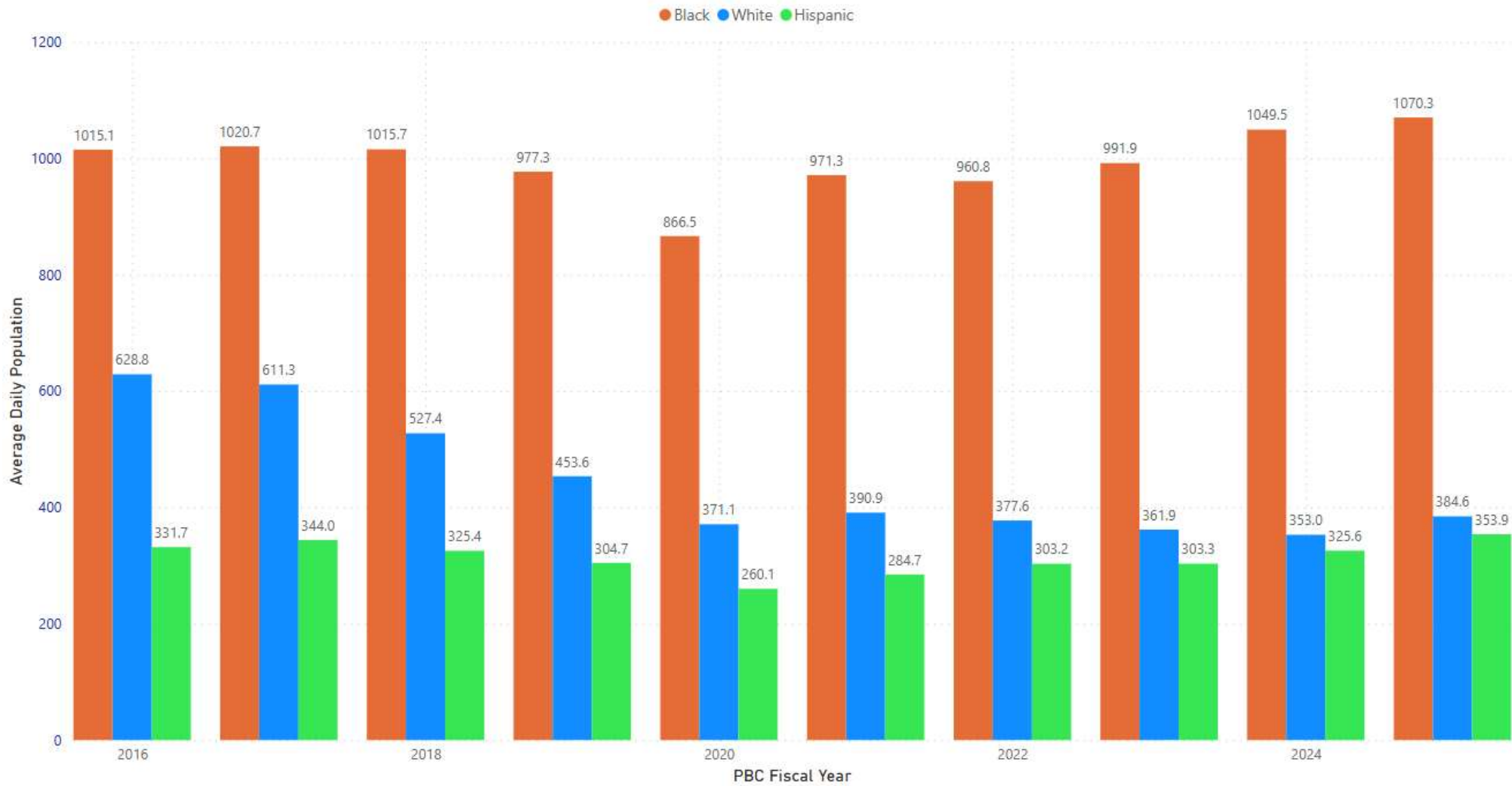
Average Daily Population (ADP) by Felony & Misdemeanor by Year

● Felony ● Misdemeanor

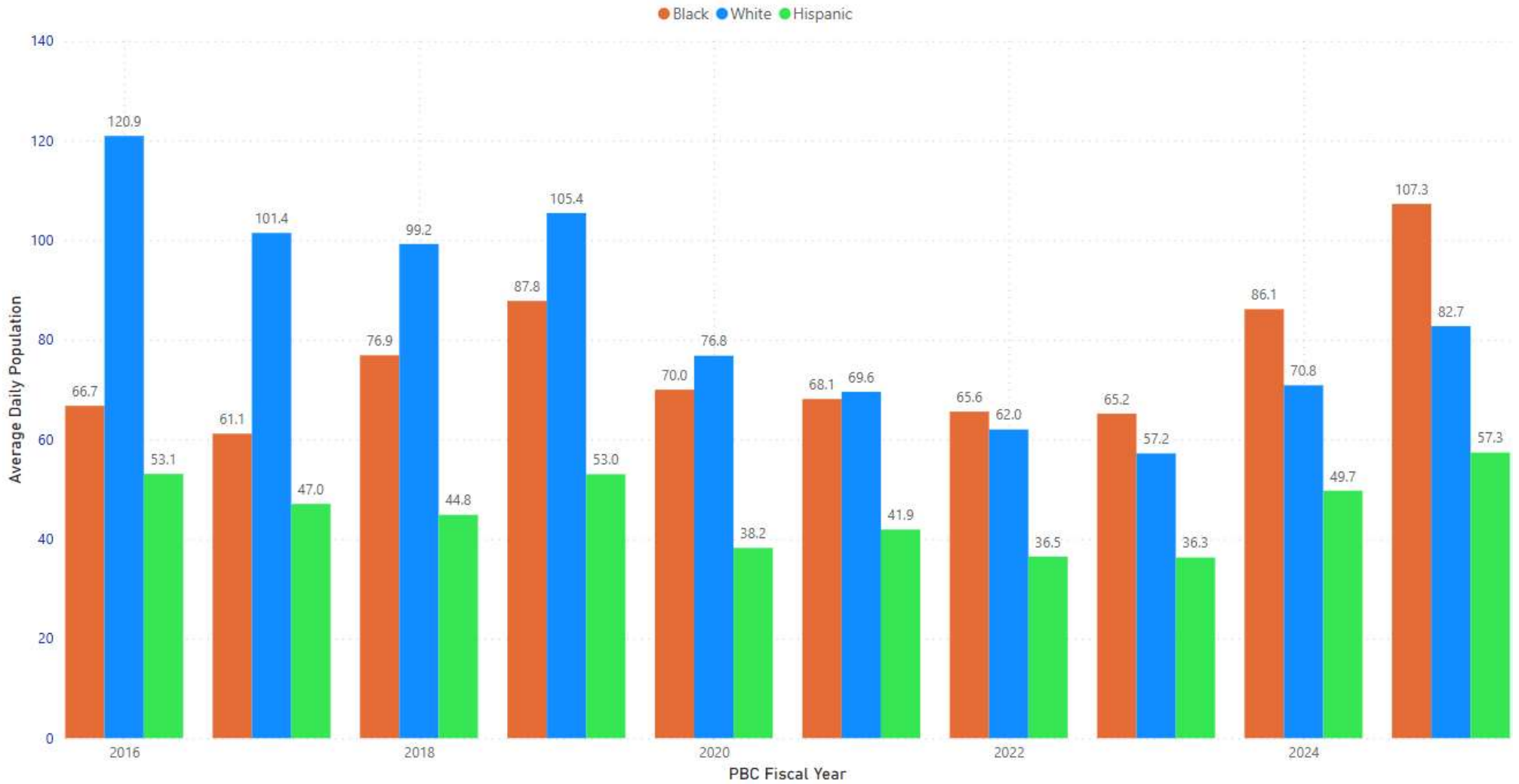


\*This figure represents the ADP specifically for those with a definable Felony or Misdemeanor charge as their most serious offense. "Other" have been excluded from these values.

Felony - Average Daily Population (ADP) by Race & Ethnicity by Year



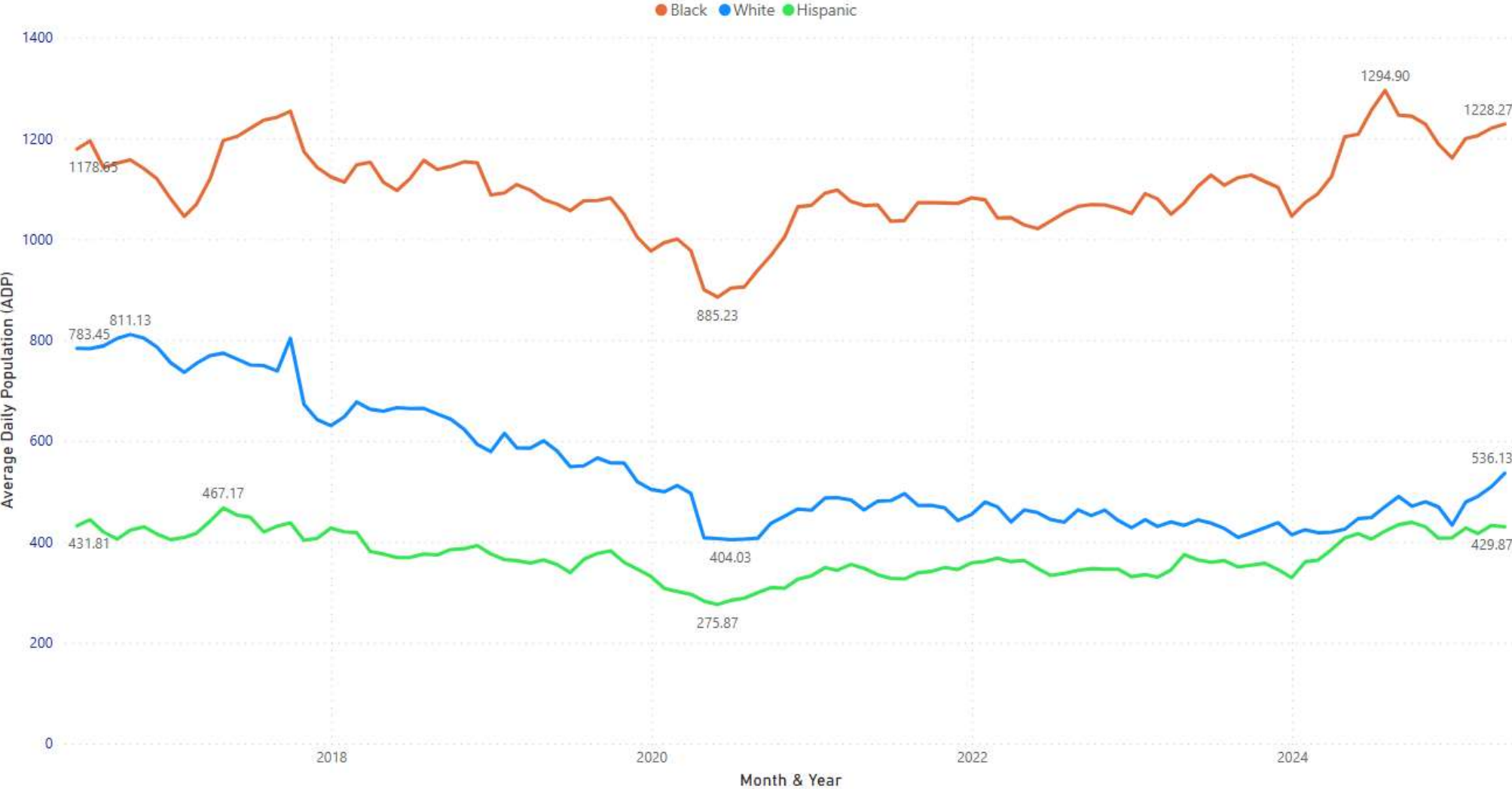
Misdemeanor - Average Daily Population (ADP) by Race & Ethnicity by Year



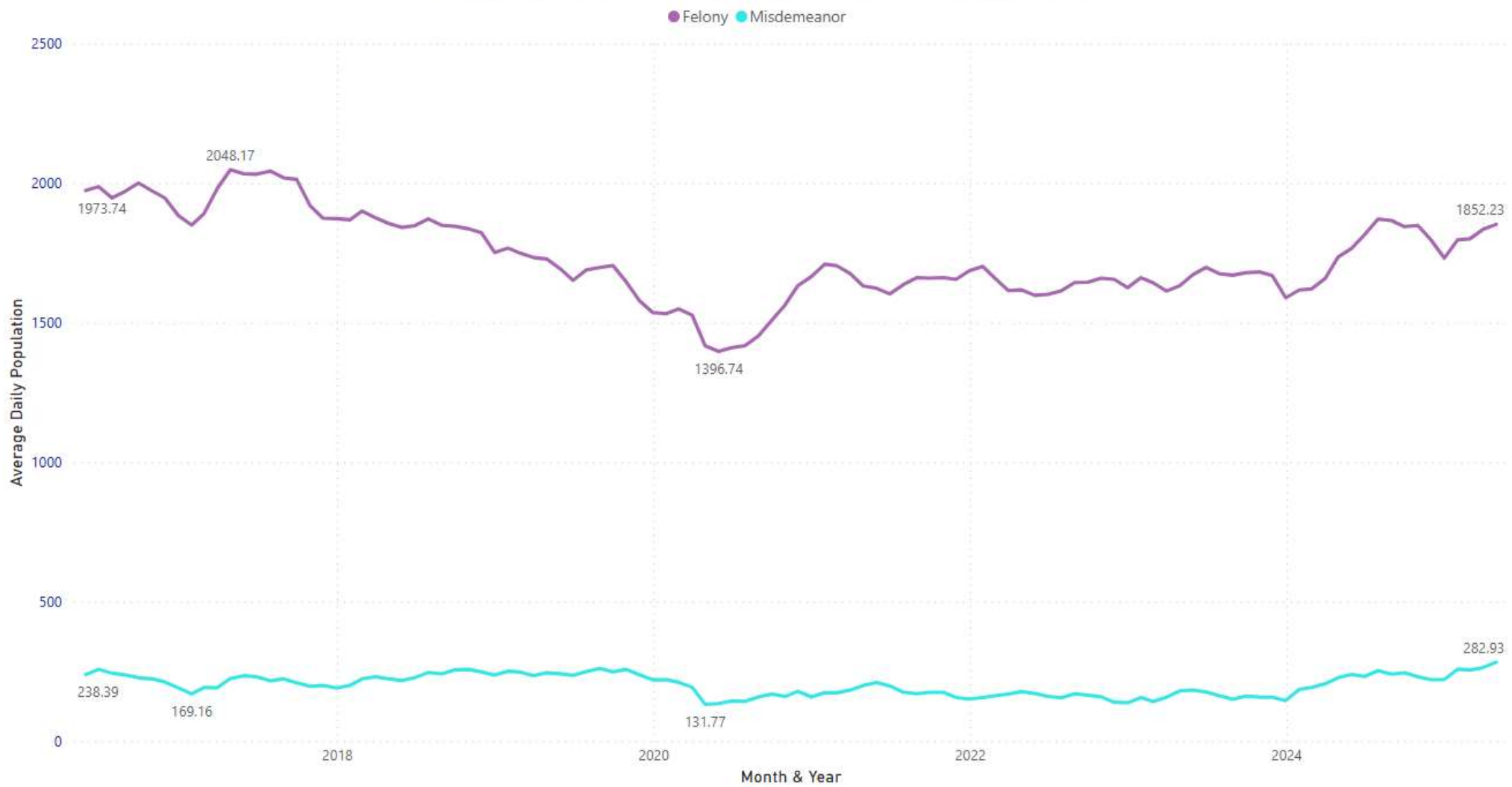
As of: 04/30/2025 | SOURCE: IMACS



Average Daily Population (ADP) by Race & Ethnicity by Month & Year

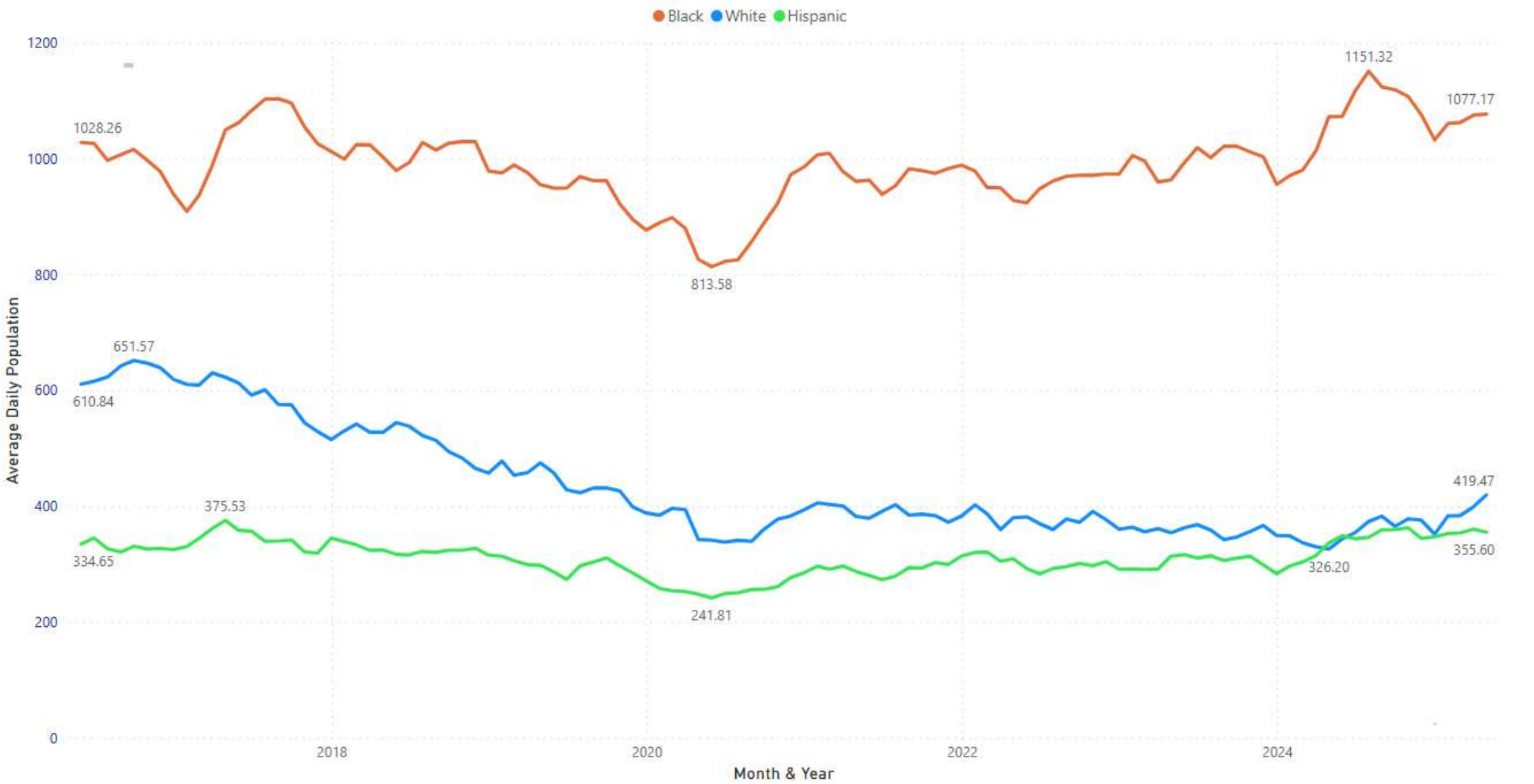


Average Daily Population (ADP) by Felony & Misdemeanor by Month & Year

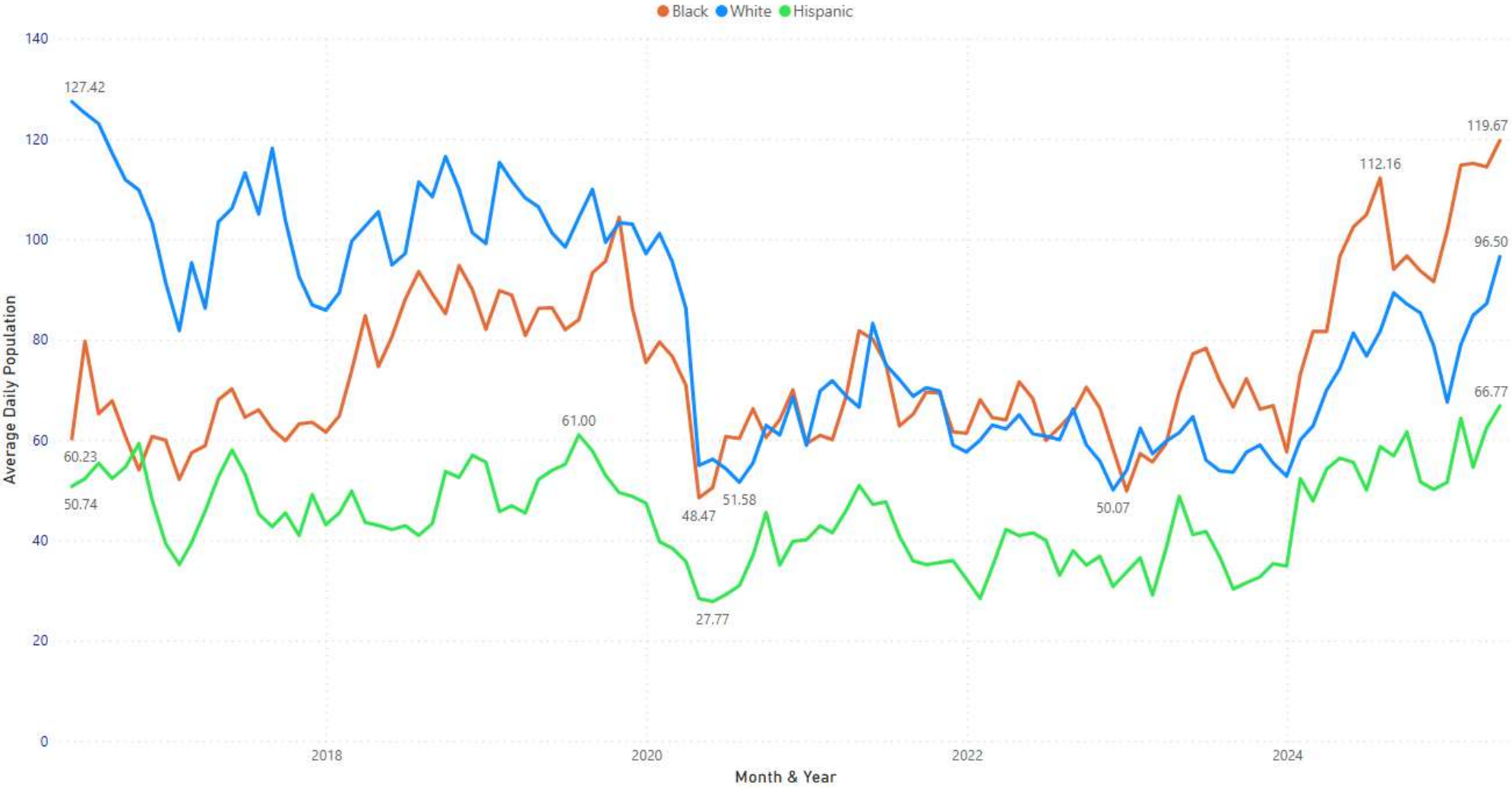


As of: 04/30/2025 | SOURCE: IMACS

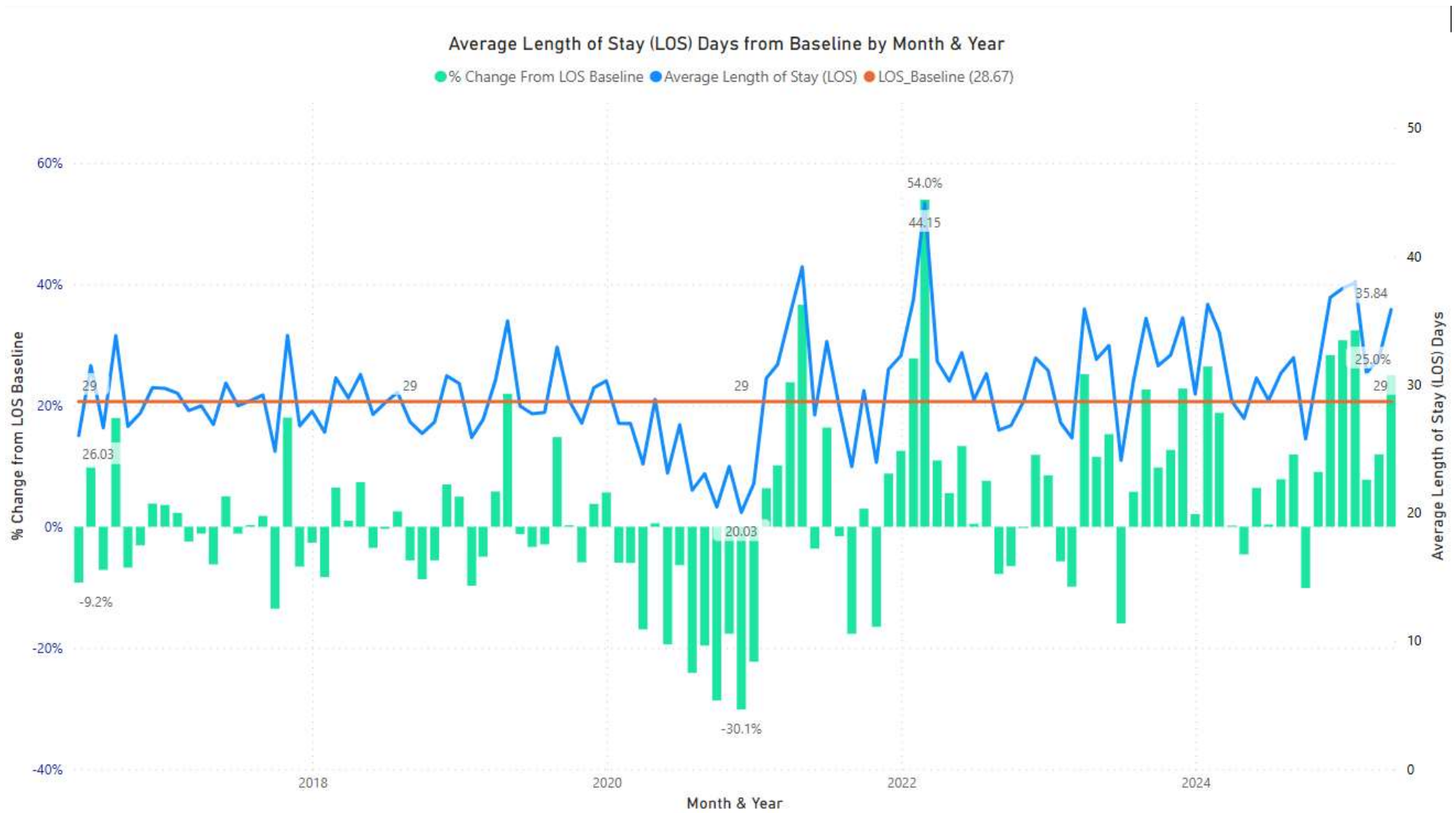
Felony - Average Daily Population (ADP) by Race & Ethnicity by Month & Year



Misdemeanor - Average Daily Population (ADP) by Race & Ethnicity by Month & Year

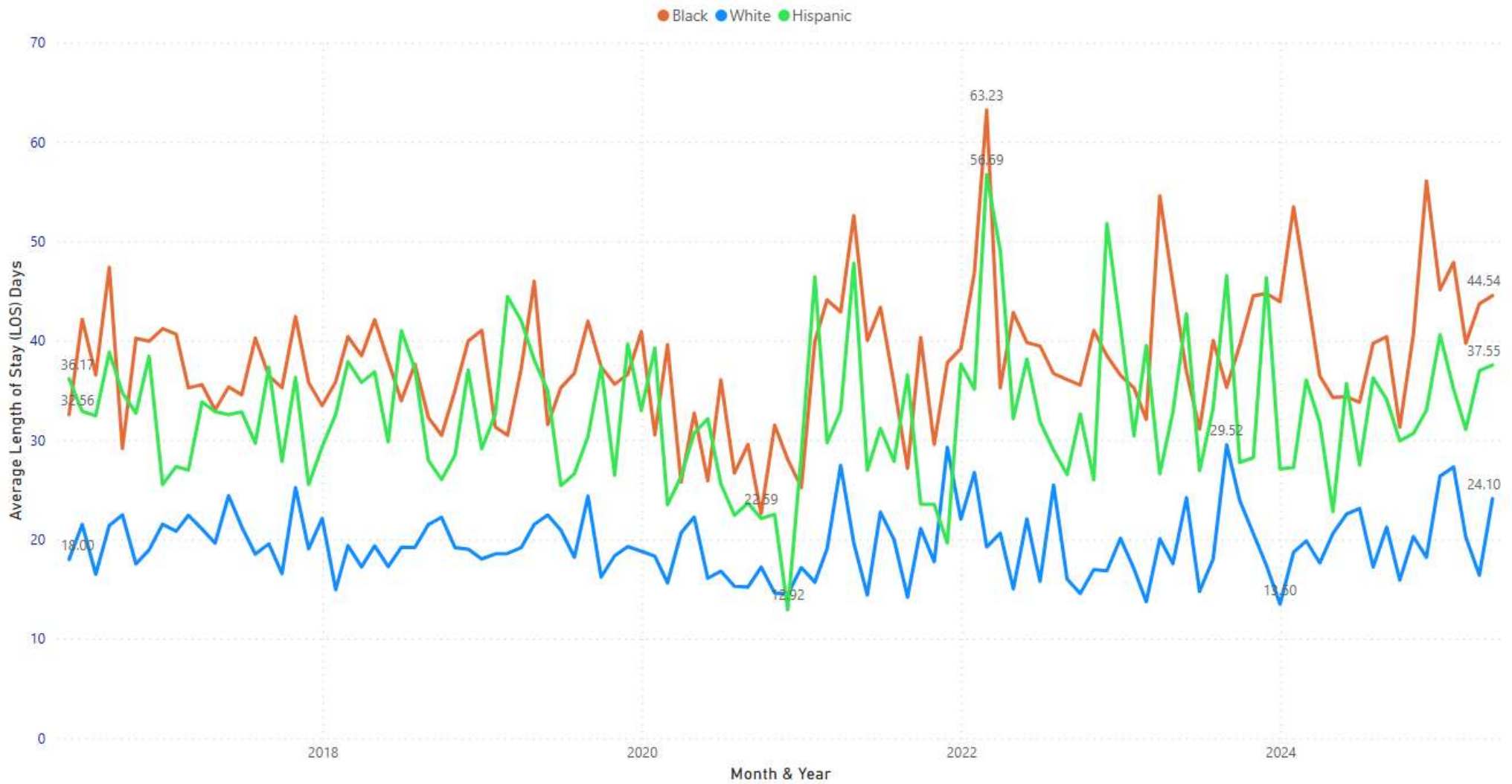


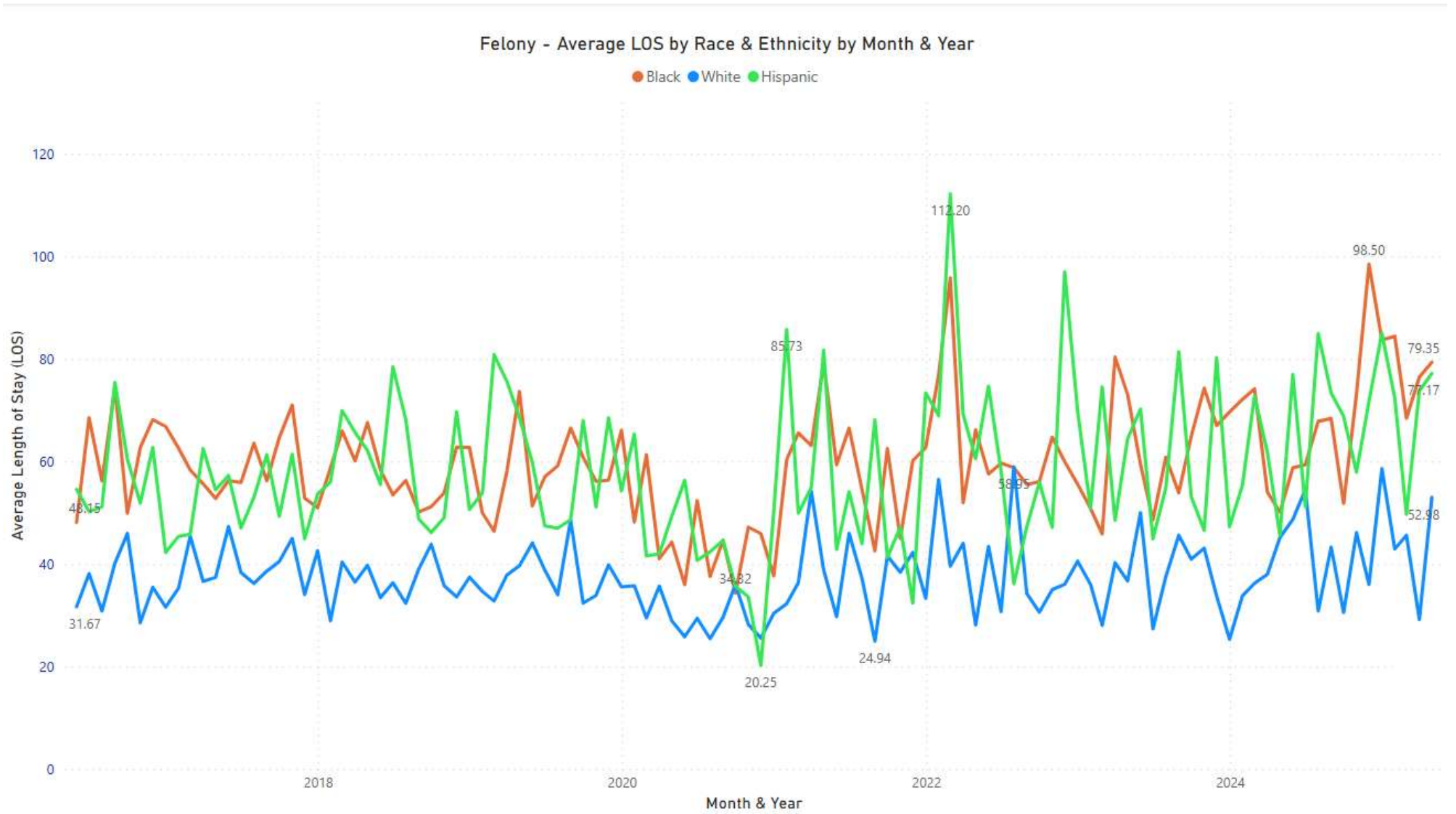




As of: 04/30/2025 | SOURCE: IMACS

Average Length of Stay (LOS) by Race & Ethnicity by Month & Year





As of: 04/30/2025 | SOURCE: IMACS

Misdemeanor - Average LOS by Race & Ethnicity by Month & Year

