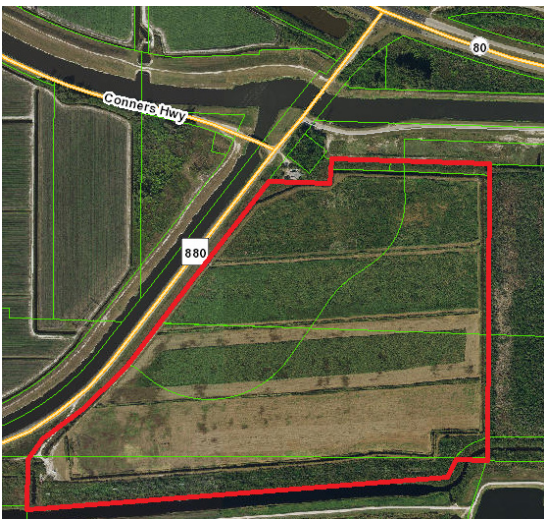




Town Hall MEETING

Regarding:
Off Highway Vehicle Park



Commissioner Melissa McKinlay cordially invites you to a town hall meeting to receive information and provide input regarding the future **Off Highway Vehicle Park** located at Twenty Mile Bend, near the intersection of State Road 80 and State Road 880 in Central Palm Beach County.

DATE: Thursday, August 19, 2021

TIME: 7-8:30pm

LOCATION: Acreage Library
15801 Orange Boulevard
Loxahatchee, Florida 33470

PALM BEACH COUNTY



PARKS & RECREATION

National Gold Medal Award Winner



Palm Beach County Board of County Commissioners

Dave Kerner, Mayor, Robert S. Weinroth, Vice Mayor, Maria G. Marino
Gregg K. Weiss, Maria Sachs, Melissa McKinlay, Mack Bernard

Verdenia C. Baker, County Administrator

In accordance with the provisions of the ADA, this document may be requested in an alternate format.
Please call 561-966-6664.