



CITIZENS ADVISORY COMMITTEE ON HEALTH AND HUMAN SERVICES



Palm Beach County
COMMUNITY
SERVICES

Helping People Build Better Communities

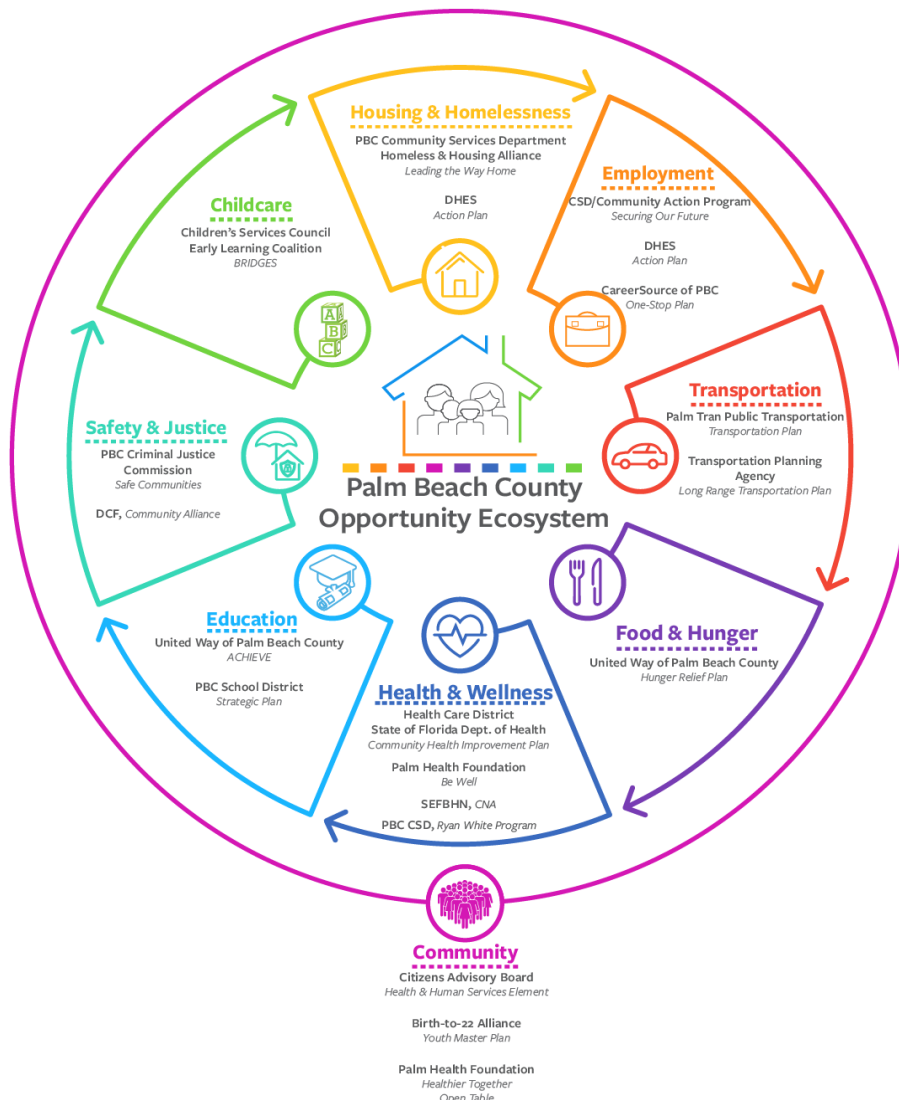
Mission: To promote independence and enhance the quality of life in Palm Beach County by providing effective and essential services to residents in need.

OPPORTUNITY ECOSYSTEM

The Palm Beach County Opportunity Ecosystem is a visual that portrays the CAC/HHS's effort to create integrated systems that maximize the opportunity for all residents to reach their fullest potential. The eight (8) domains represent health and human services delivered within each system of care. The role of the backbone organizations identified within each domain is defined in the Health and Human Services Element. Backbone organizations are responsible for ensuring a safety net for vulnerable populations as defined by the Element. Each domain represents a system of care with a backbone organization(s) that focuses on Quality of Services, Accessibility, Availability, Accountability, and Coordination.

CORE VALUES THAT GOVERN OUR APPROACH

- Efforts to promote racial equity and reduce discrimination must be intentional to address the disparities that currently exist
- Services should be provided in the least restrictive environment
- Person-centered approach
- HHS are interdependent and must be integrated to maximize opportunity



HEALTH AND HUMAN SERVICES

Health and Human Services (HHS) focuses on physical and behavioral health as well as other human needs. An effective HHS System of Care focuses on prevention and intervention of services for vulnerable populations. It not only addresses the quality of direct services, but also accessibility, availability, accountability, and coordination among professionals, agencies and users within the service continuum.

CITIZENS ADVISORY COMMITTEE ON HEALTH AND HUMAN SERVICES

The Palm Beach County Board of County Commissioners (BCC) established the Citizens Advisory Committee on Health and Human Services (CAC/HHS) on November 13, 1990, pursuant to Resolution R-90-1978. The mission of the CAC/HHS is to assist the BCC in the assessment of need, planning, implementation, and evaluation of the System of Care, as defined in the Health and Human Services Element (Element) of the Palm Beach County Comprehensive Plan.

The CAC/HHS provides recommendations to sustain core services within the systems of care by defining basic needs; surveying emergent/urgent needs; prioritizing resources to address the needs; and making funding recommendations to the board of county commissioners to fill critical service gaps. The CAC/HHS advises the BCC on an annual basis regarding the system of care issues based on the assessment of gaps in core services. The Community Services Department collects and analyzes data in collaboration with the CAC. This data is used to coordinate with other health and social service organizations in order to foster a seamless service delivery system.

HEALTH AND HUMAN SERVICES ELEMENT

The Element identifies the County's role in funding, providing and/or supporting the delivery of Health and Human Services; it also defines the County's relationship with other funders and providers of services for the purpose of maximizing the resources and benefits available to Palm Beach County residents. The Element aligns Financially Assisted Agency (FAA) investments with the BCC strategic priorities.

CITIZENS ADVISORY COMMITTEE MEMBERS

Dr. Merlene Ramnon
Chair

Dr. Christine Koehn
Vice-Chair

Dr. Thomas Cleare

Charlotte Leonard

Randy Palo

Scot Kannel
(Ex-Officio)

Houston Tate
(Ex-Officio)

Inger Harvey

Elisa Cramer

Anne Caroline Valtin

Dr. Barbara Cox Gerlock

Dr. Constance Siskowski

Andrea Stephenson
(Ex-Officio)

Marie Presmy
(Ex-Officio)

Aruna Gilbert
(Ex-Officio)



Main Office:

810 Datura Street

West Palm Beach, 33401



561-355-4700



www.facebook.com/pbccsd



www.twitter.com/pbccsd



www.instagram.com/pbccsd



www.pbcgov.org/communityservices