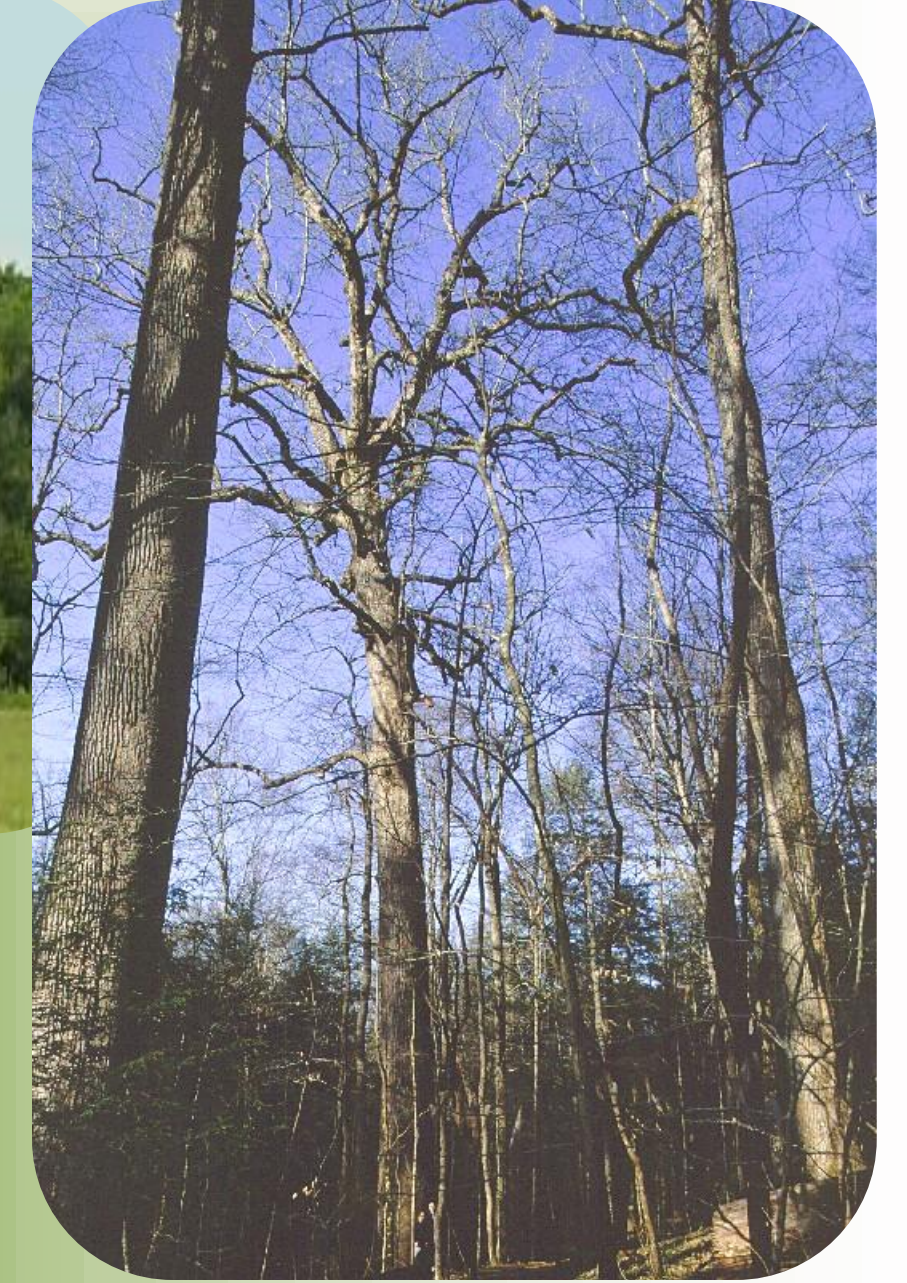


Strengthening our Community Tree Canopy Through Education - Module #1 Tree Growth & Biology in an Urban Environment

Trees in a Natural Environment

- Trees grow in groups
- Trees compete with each other for sunlight
- Trees develop single, central trunks



Low, codominant trunks



Trees in a Urban Environment

- Trees planted singularly
- No competition for sunlight
- Trees develop multiple, codominant trunks



What to Look For in a Tree

- Single, straight trunk
- Good branch attachment
- Evenly spaced branches

This project is made possible by a grant through the 2011 National Urban and Community Forestry Grant Program and the Florida Department of Agriculture and Consumer Services, and the Florida Forest Service.

UF | **IFAS Extension**
UNIVERSITY of FLORIDA



For more information:
<http://fyn.ifas.ufl.edu>
[http:// palm-beach.ifas.ufl.edu](http://palm-beach.ifas.ufl.edu)
<http://edis.ifas.ufl.edu>