

Section K - 25' Perimeter Incompatibility Buffer

Planting for this buffer shall consist of:

- Canopy trees 20' on center.
- A minimum 6' ht. continuous solid opaque visual screen composed of hedges or shrubs, either alone or in combination with a wall, fence and/or berm. A wall counts as 1 layer of planting; however, a wall shall require a continuous hedge along both sides of the wall and shall then satisfy the shrub planting requirement in lieu of the following:
- For each 100 linear feet of buffer length the following plants shall be provided:

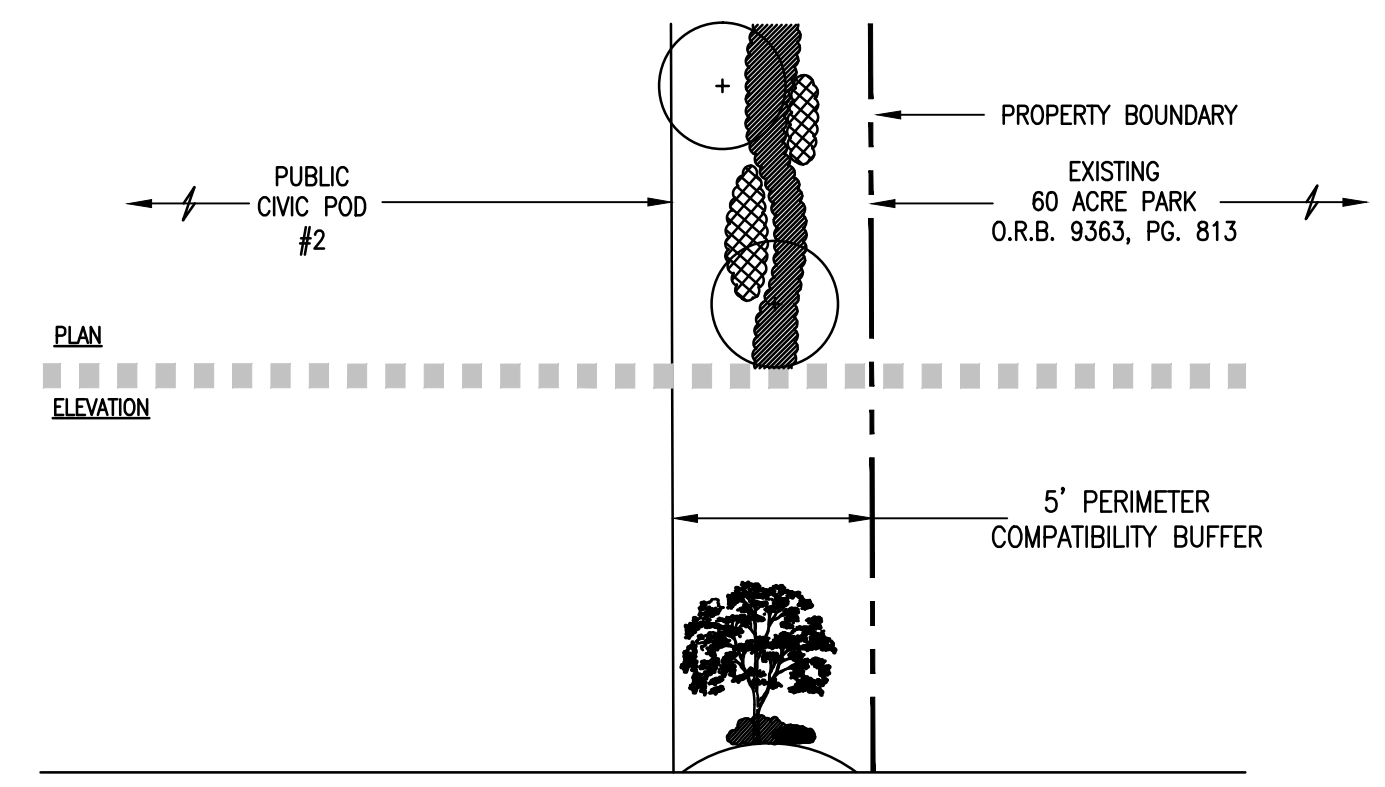
25 large shrubs (36" ht) spaced 48" oc minimum

25 medium shrubs (24" ht) spaced 30" oc minimum

50 small shrubs (18" ht) spaced 24" oc minimum

200 ground cover (6" ht) plants

K - 25' Perimeter Incompatibility Buffer



Section N.1 - 5' Perimeter Compatibility Buffer

Planting for this buffer shall consist of:

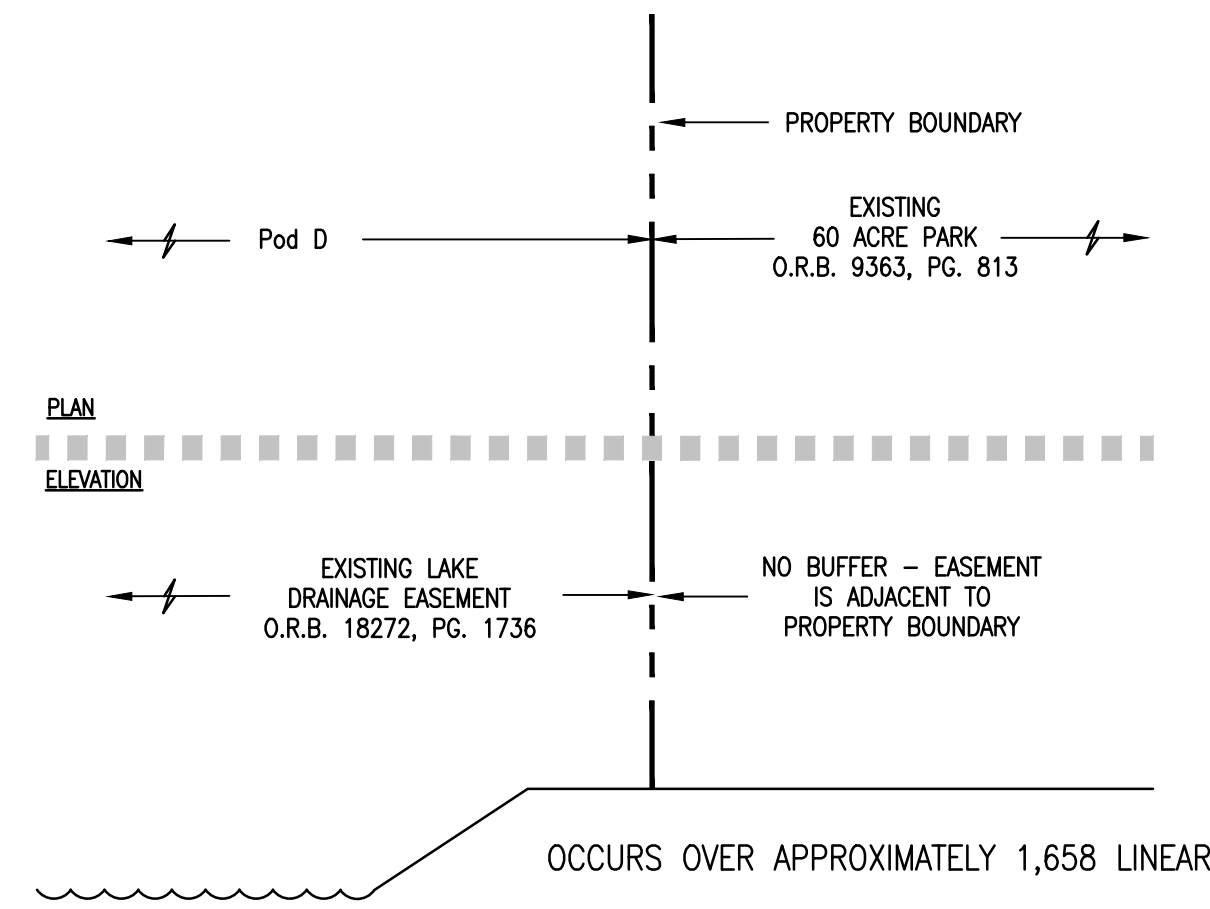
- A minimum 2' ht. continuous opaque visual screen composed of planting alone or in combination with a fence/wall/berm.
- 1 Canopy tree per 25 linear feet.
- For each 100 linear feet of buffer length the following plants shall be provided:

25 medium shrubs (24" ht) spaced 30" oc minimum

50 small shrubs (18" ht) spaced 24" oc minimum

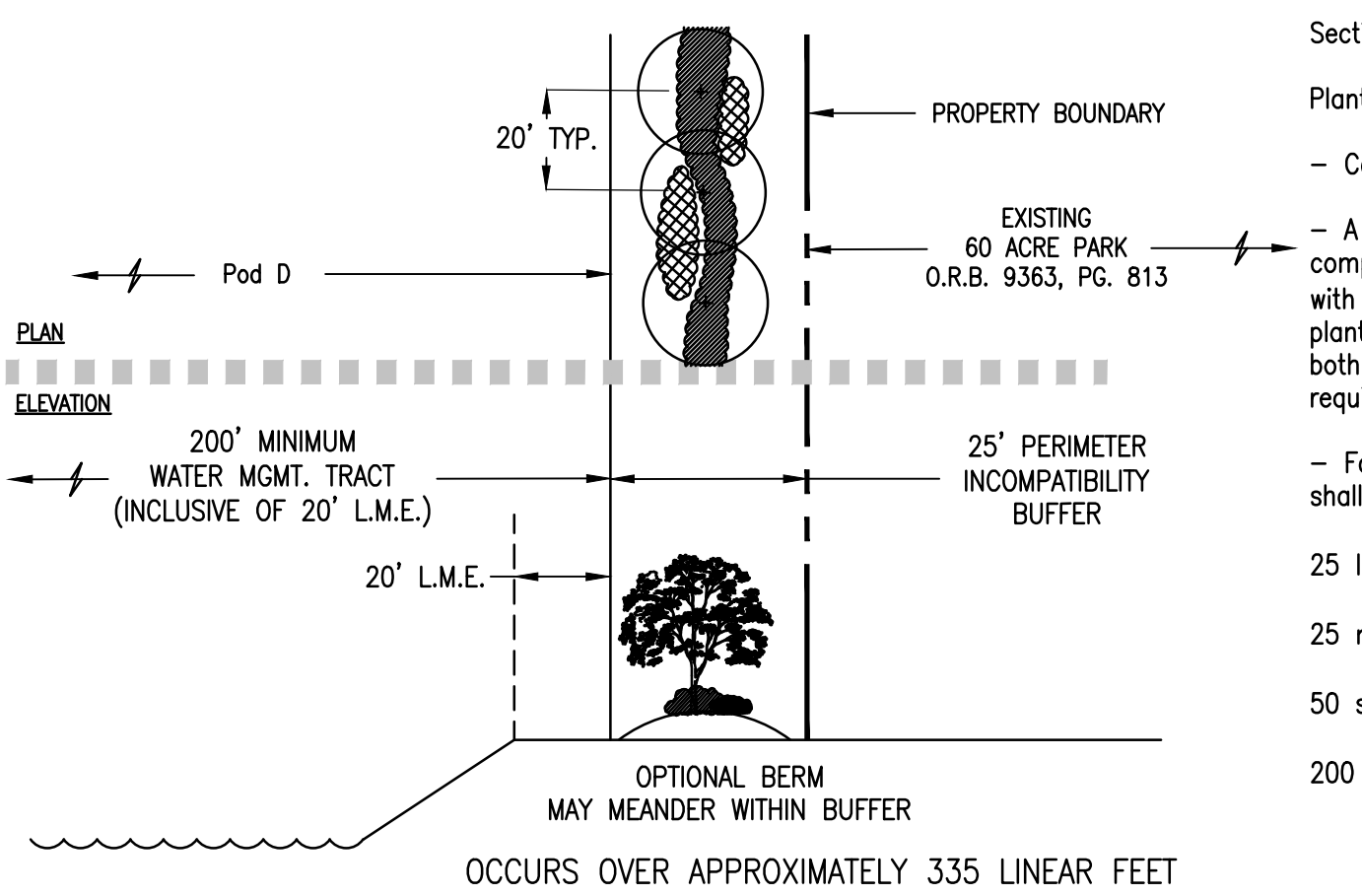
200 ground cover (6" ht) plants

N.1 - 5' Perimeter Compatibility Buffer



L - No Buffer

OCCURS OVER APPROXIMATELY 1,658 LINEAR FEET



Section M - 25' Perimeter Incompatibility Buffer

Planting for this buffer shall consist of:

- Canopy trees 20' on center.
- A minimum 6' ht. continuous solid opaque visual screen composed of hedges or shrubs, either alone or in combination with a wall, fence and/or berm. A wall counts as 1 layer of planting; however, a wall shall require a continuous hedge along both sides of the wall and shall then satisfy the shrub planting requirement in lieu of the following:
- For each 100 linear feet of buffer length the following plants shall be provided:

25 large shrubs (36" ht) spaced 48" oc minimum

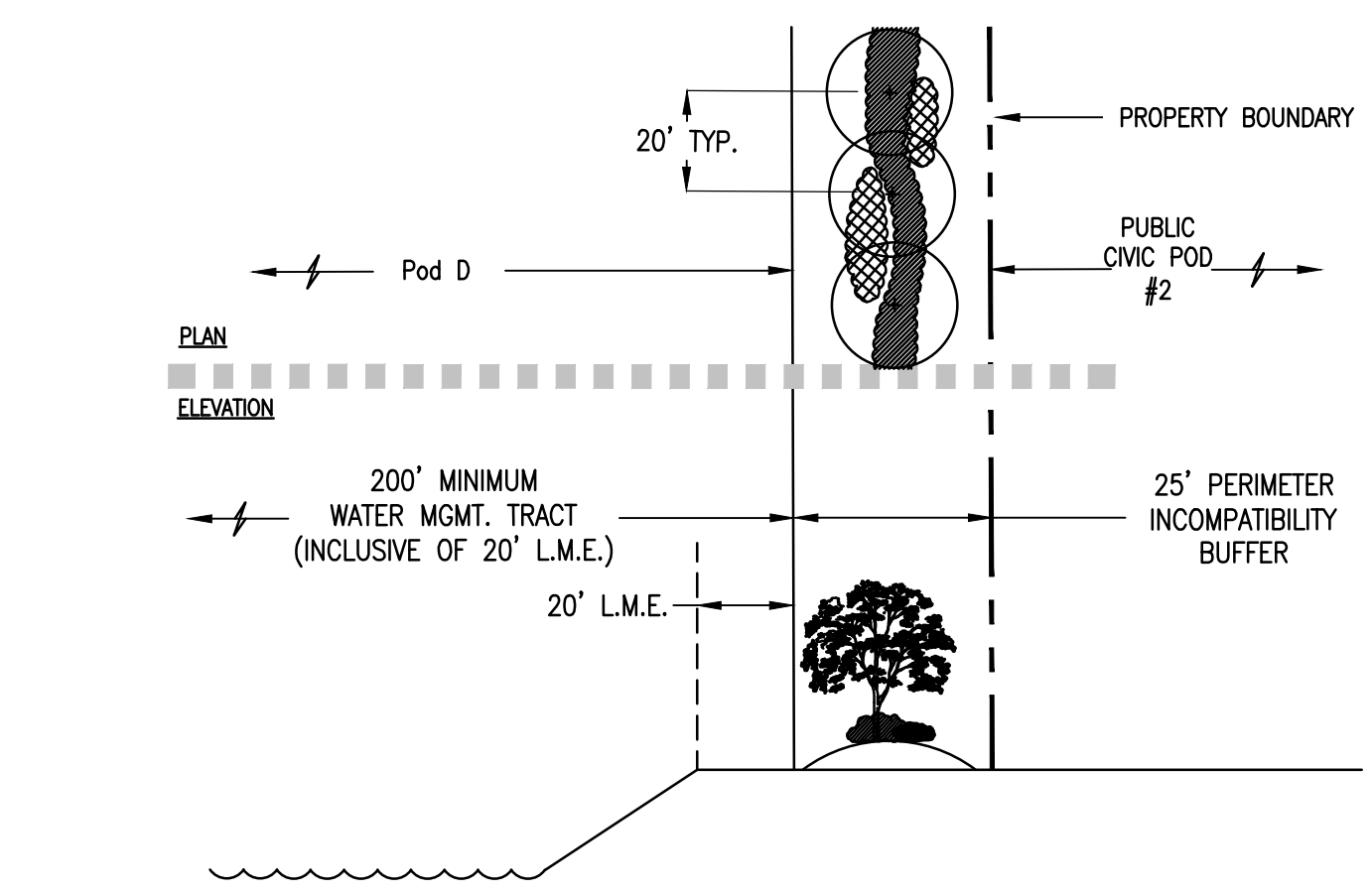
25 medium shrubs (24" ht) spaced 30" oc minimum

50 small shrubs (18" ht) spaced 24" oc minimum

200 ground cover (6" ht) plants

M - 25' Perimeter Incompatibility Buffer

OCCURS OVER APPROXIMATELY 335 LINEAR FEET



Section N - 25' Type 2 Incompatibility Buffer

Planting for this buffer shall consist of:

- Canopy trees 20' on center.
- A minimum 6' ht. continuous solid opaque visual screen composed of hedges or shrubs, either alone or in combination with a wall, fence and/or berm. A wall counts as 1 layer of planting; however, a wall shall require a continuous hedge along both sides of the wall and shall then satisfy the shrub planting requirement in lieu of the following:
- For each 100 linear feet of buffer length the following plants shall be provided:

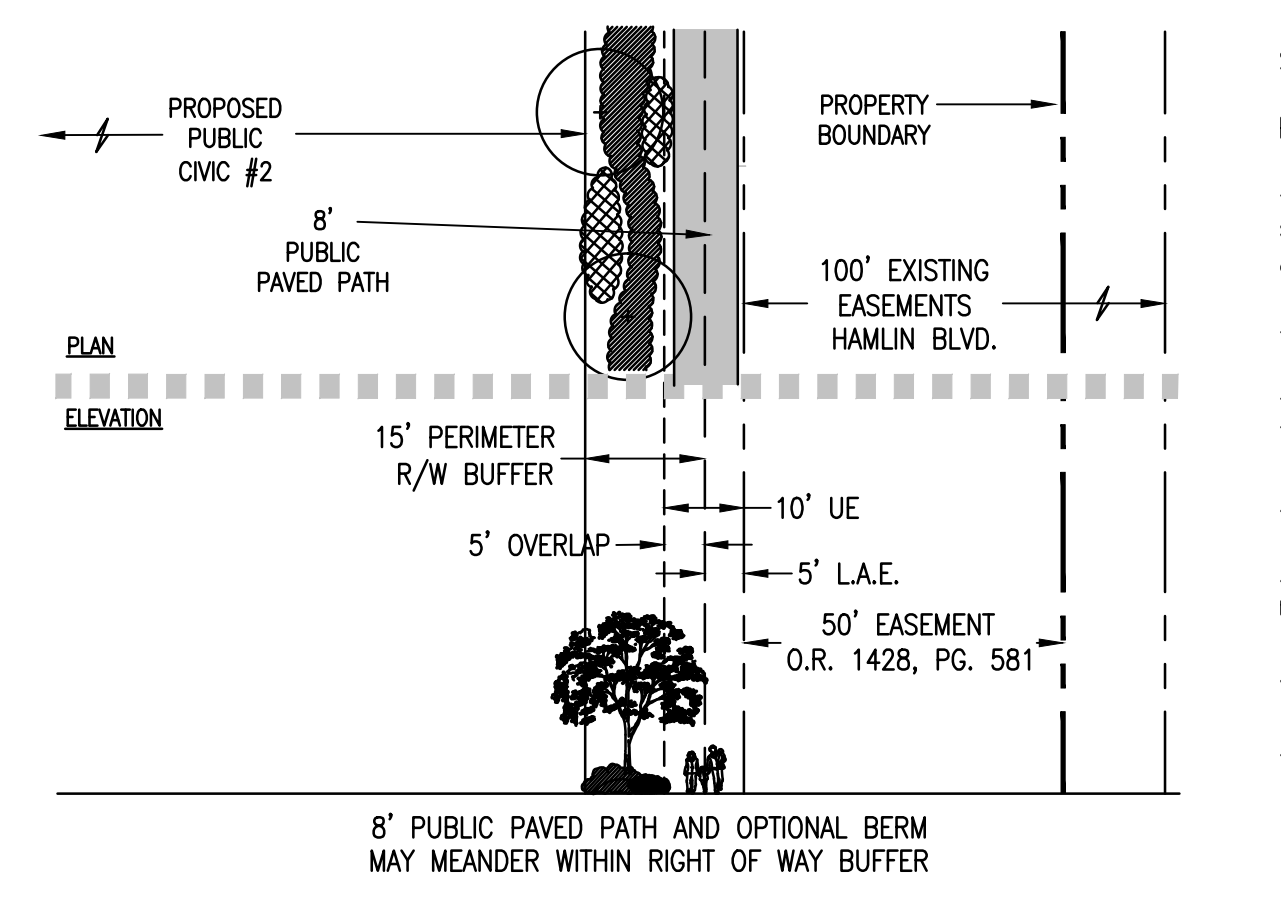
25 large shrubs (36" ht) spaced 48" oc minimum

25 medium shrubs (24" ht) spaced 30" oc minimum

50 small shrubs (18" ht) spaced 24" oc minimum

200 ground cover (6" ht) plants

N - 25' Type 2 Incompatibility Buffer



Section N.2 - 15' Perimeter Right of Way Buffer

Planting for this buffer shall consist of:

- A minimum 2' ht. continuous opaque visual screen composed of planting alone or in combination with a fence/wall/berm.
- 1 Canopy tree per 25 linear feet.
- For each 100 linear feet of buffer length the following plants shall be provided:

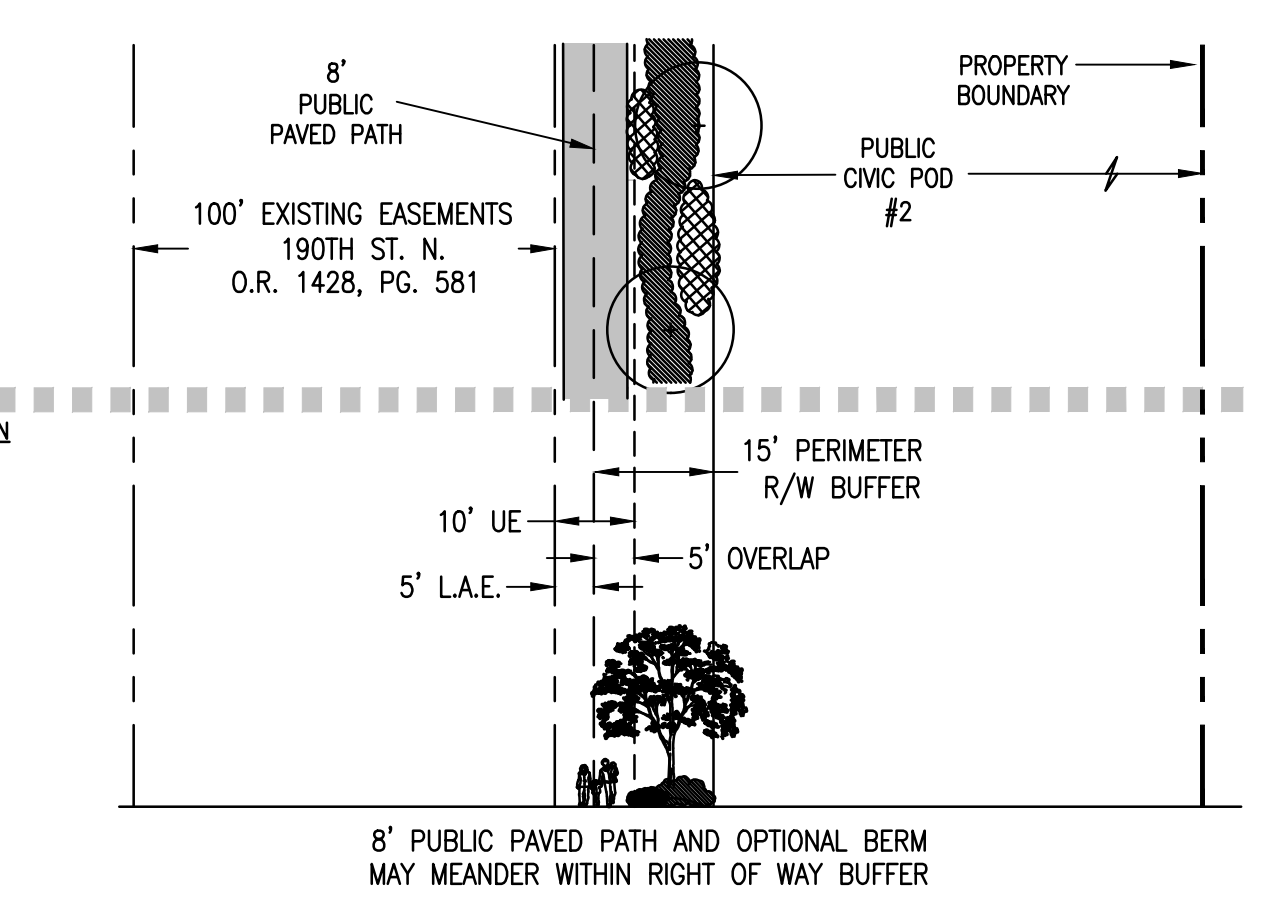
25 large shrubs (36" ht) spaced 48" oc minimum

25 medium shrubs (24" ht) spaced 30" oc minimum

50 small shrubs (18" ht) spaced 24" oc minimum

200 ground cover (6" ht) plants

N.2 - 15' Perimeter R/W Buffer Public Civic Pod #2



Section N.3 - 15' Perimeter Right of Way Buffer

Planting for this buffer shall consist of:

- A minimum 2' ht. continuous opaque visual screen composed of planting alone or in combination with a fence/wall/berm.
- 1 Canopy tree per 25 linear feet.
- For each 100 linear feet of buffer length the following plants shall be provided:

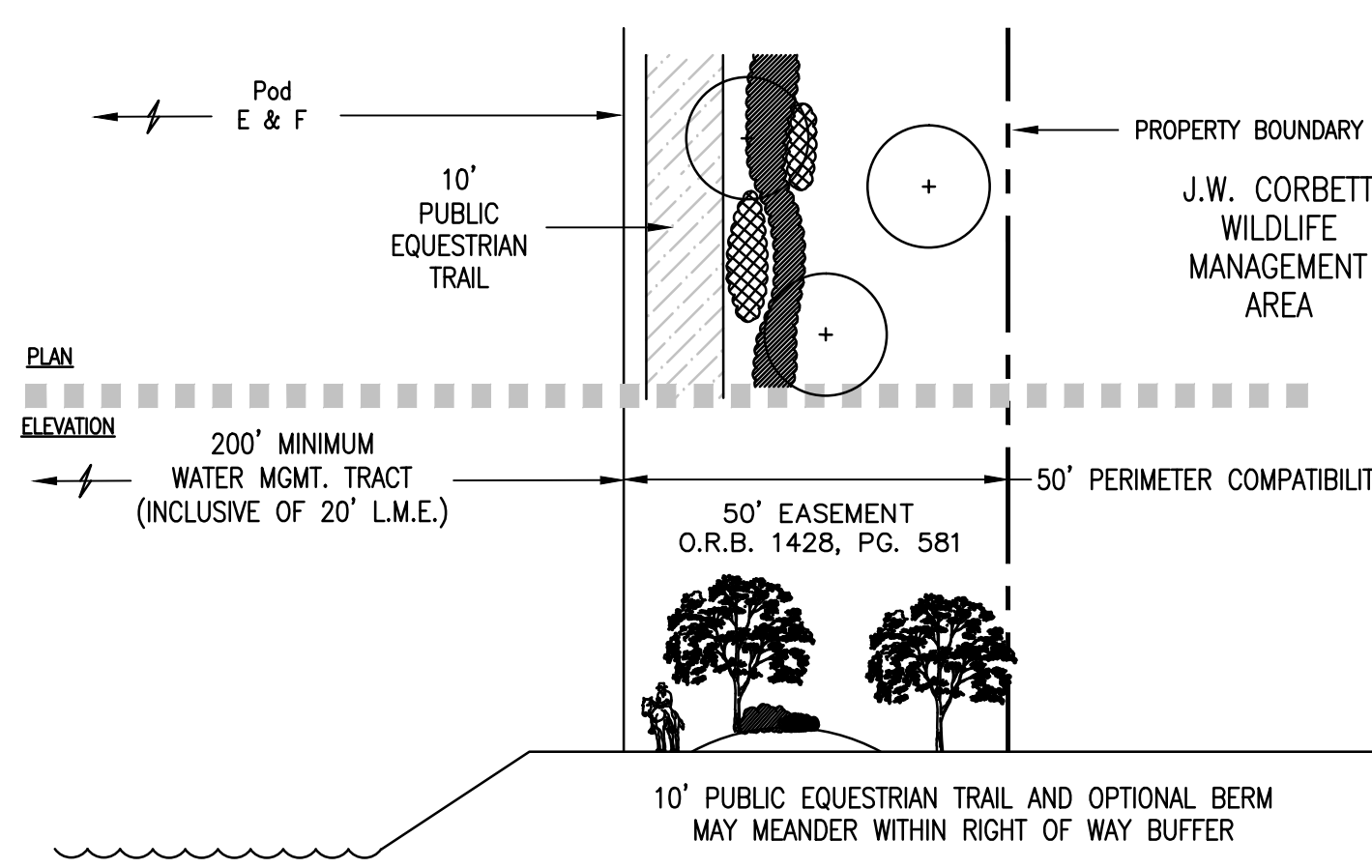
25 large shrubs (36" ht) spaced 48" oc minimum

25 medium shrubs (24" ht) spaced 30" oc minimum

50 small shrubs (18" ht) spaced 24" oc minimum

200 ground cover (6" ht) plants

N.3 - 15' Perimeter R/W Buffer Public Civic Pod #2



Section O - 50' Perimeter Compatibility Buffer

Planting for this buffer shall consist of:

- A minimum 2' ht. continuous opaque visual screen composed of planting alone or in combination with a fence/wall/berm.
- 1 Canopy tree per 25 linear feet.
- For each 100 linear feet of buffer length the following plants shall be provided:

25 medium shrubs (24" ht) spaced 30" oc minimum

50 small shrubs (18" ht) spaced 24" oc minimum

200 ground cover (6" ht) plants

O - 50' Perimeter Compatibility Buffer

PALM BEACH WEST ASSOCIATES I, LLLP
 1600 SAWGRASS CORPORATE PKWY SUITE 400
 SUNRISE, FLORIDA 33323
 954-753-1730

Consultants:

CIVIL ENGINEER
 GLH Engineering, LLC
 1600 Sawgrass Corporate Pkwy Suite 400
 Sunrise, FL 33323
 954-753-1730

SURVEYOR
 Sand and Hills Survey, Inc.
 8461 Lake Worth Road, Suite 410
 Lake Worth, FL 33467
 (561) 209-6048

TRAFFIC ENGINEER
 Simmons and White
 2581 Metrocentre Blvd. Suite 3
 West Palm Beach, FL 33407
 (561) 478-7848

PLANNERS
 Urban Design Kilday Studios
 610 Clematis Street, Suite CU02
 West Palm Beach, FL 33401
 (561) 366-1100

Project:
INDIAN TRAILS GROVE - PUD

Palm Beach County, Florida
 Sheet title:
PRELIMINARY Regulating Plan

Date:
2015-07-15

Revisions:
 2015-09-28 Resubmittal

Amendments:

Zoning Stamps:

Sheet number:
PRP-4