



# JOHN PRINCE PARK CAMPGROUND DISTRIBUTION

**"We create opportunities  
for healthy, happy living!"**

PARKS & RECREATION DEPARTMENT  
PALM BEACH COUNTY BOARD OF COUNTY COMMISSIONERS

## PROJECT FACT SHEET

TIMELINE

PHASE 1  
Concept

PHASE 2  
Funding

PHASE 3  
Design & Construction

PHASE 4  
Completion

## PROJECT DESCRIPTION

### PROJECT SCOPE

This project involves the upgrade and expansion of the electrical distribution system within the John Prince Park Campground. The project will allow for the safe and efficient distribution of electrical service throughout the campground. This project is expected to begin in May 2016 and end in November 2016.

### PROJECT NEED & PURPOSE

The electrical distribution system within the campground has become outdated and is unable to service the growing needs of modern recreational vehicles. A complete replacement of the existing overhead distribution system will increase the power available to each site and eliminate ongoing safety issues.

## PROJECT COSTS & IMPROVEMENTS

**Estimated at  
\$1.1M**

Funded By

Impact Fees

Upgraded Electrical Distribution

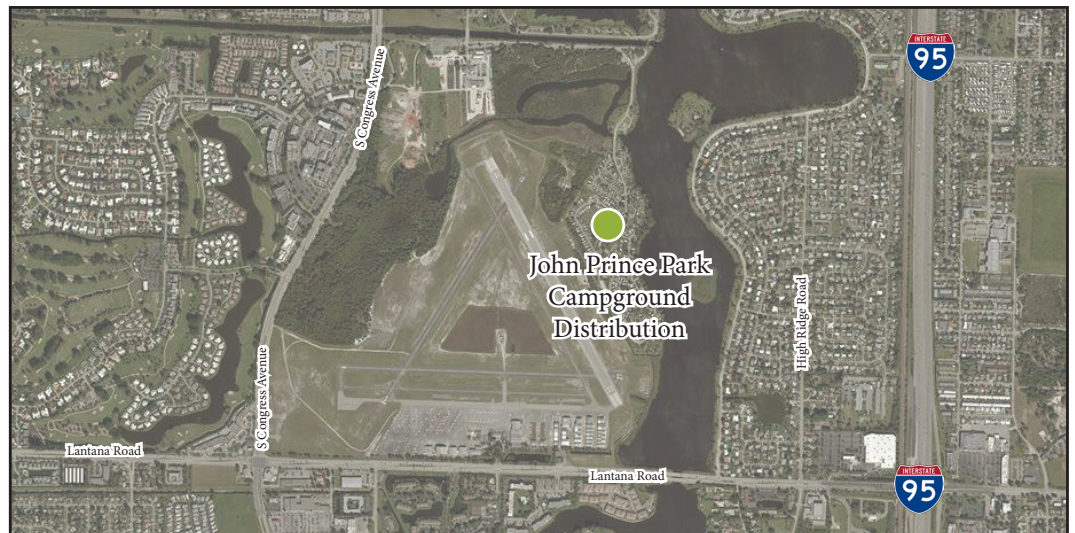
Additional Power Flow

Safe & Efficient Service

## DEVELOPMENT PLAN



## PROJECT LOCATION



## CONTACT

www.pbcparcs.com

2700 6<sup>th</sup> Ave South, Lake Worth, FL 33461

(561) 966 - 6600