

Pântano Trail

Connecting *NENA* Places

What Is NENA?

- The Northeast Everglades Natural Area (NENA) is a collection of conservation lands (165,000 acres) as well as activity and education centers in northern Palm Beach County and southern Martin County.
- NENA provides residents and visitors with a wide range of nature-based outdoor recreational opportunities.

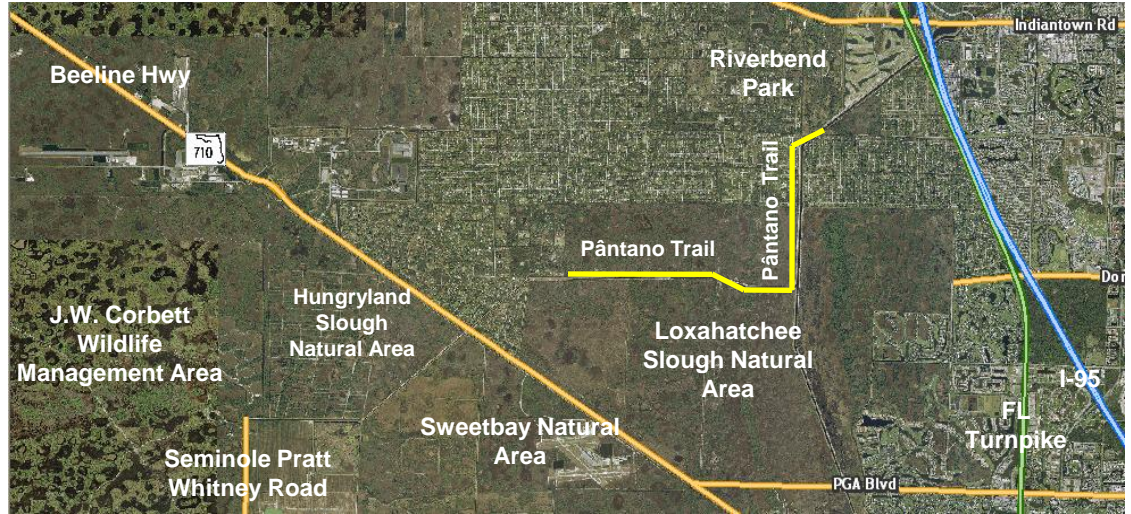
Pântano Trail

- Located between Riverbend Park and J.W. Corbett Wildlife Management Area.
- 10-mile multuse trail.

Project Benefits

- Offers multi-user access to four conservation lands and visitor facilities: Riverbend Park, Loxahatchee Slough Natural Area, Hungryland Slough Natural Area, and J.W. Corbett WMA.
- Provides recreational opportunities such as wildlife viewing, bird watching and nature photography.

Connect with the Department of Environmental Resources Management and download our mobile maps.



Riverbend Park



Pântano Trail Opening Event



Loxahatchee Slough Natural Area

Project Overview

- The trail extends approximately 5.6 miles from Palm Beach County's Riverbend Park in Jupiter southwest through the Loxahatchee Slough Natural Area on the C-18 Canal bank.
- Construction was completed in July, 2014. Pântano Trail together with Bluegill Trail provides access to hiking and equestrian trails in the Loxahatchee Slough Natural Area from Riverbend Park utilizing the C-18 canal.
- Project improvements include:
 - ✓ Accessible surface for cyclists and hikers
 - ✓ Shade shelter
 - ✓ Bike racks at trailheads to natural area trails
 - ✓ Informational kiosks and signage
- Future plans will connect Loxahatchee Slough Natural Area to Hungryland Slough Natural Area and J.W. Corbett Wildlife Management Area

Project Partners

PBC Environmental Resources Management, PBC Parks & Recreation, South Florida Water Management District, PB Metropolitan Planning Organization, Florida Department of Transportation (Transportation Alternatives program)



Palm Beach County Board of County Commissioners
 Department of Environmental Resources Management
 2300 North Jog Road - Fourth Floor, West Palm Beach, FL 33411
 Phone: 561-233-2400 www.pbcgov.org/erm/
 Find us on Facebook www.facebook.com/PBCERM