

Jupiter Stepping Stone Artificial Reef

Creating Habitat

- Due to the small amount of natural reef located in mid-depth ocean waters, juvenile fish exiting estuaries, such as Lake Worth Lagoon, have to travel great distances to reach available food and shelter.
- By constructing artificial reefs outside each inlet in the mid-depth range (25 to 45 feet) habitat is created that serves as “stepping stones” for juvenile fish.

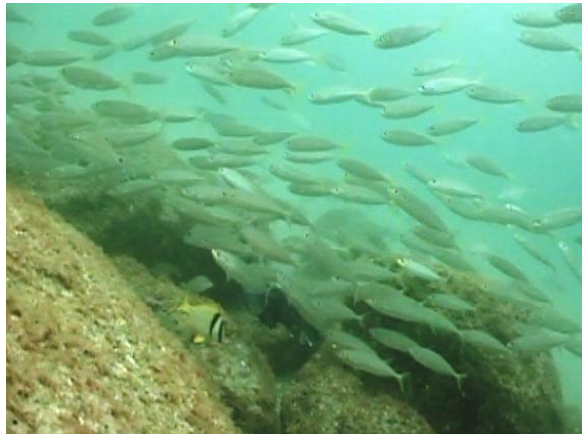
Project Location

- Approximately 1 mile northeast of the Jupiter Inlet.
- 26° 57.907 N
80° 03.922 W
- 26° 57.904 N
80° 03.545 W
- 26° 57.896 N
80° 03.734 W
- 26° 57.210 N
80° 03.730 W

Benefits

- Provides habitat for hundreds of species of fish, crustaceans, and other marine organisms.
- Creates additional areas for snorkeling, diving, and fishing, reducing pressures on natural reef systems.
- Because of the depth of the reef, it will make a great site for introductory dive classes taking their first open water dives.

Connect with the Department of Environmental Resources Management and download our artificial reef map.



Round scad (cigar minnows)



Beaugregory juvenile damselfish



Concrete/limestone rock deployed in 2010



A rare sight, numerous black sea bass

Project Overview

- The total project area encompasses about 400 acres in 25 to 45 feet of water.
- Concrete and limestone rock boulders will be placed to create multiple reefs.
- The reefs will be spaced approximately 1000 feet apart which will provide “edge” space to enhance habitat value.
- The distance from the ocean floor to the top of the reef will vary from 3-15 feet.
- In August 2010, 3 reefs were constructed at the north end of the project area.
- Just 3 ½ months after deployment, a site inspection found hundreds of fish representing 32 species and 18 families and many invertebrates already encrusted on the rocks.
- It is anticipated that as reef coverage increases, so too will overall diversity and biomass that the site supports.
- Additional reefs are planned as current permits allow additions to be made at this site until 2018.

Project Partners

Palm Beach County Department of Environmental Resources Management, Florida Power and Light, and Florida Fish and Wildlife Conservation Commission



Palm Beach County Board of County Commissioners
Department of Environmental Resources Management
2300 North Jog Road - Fourth Floor, West Palm Beach, FL 33411
Phone: 561-233-2400 <http://www.co.palm-beach.fl.us/erm/>