

Historic Jupiter-Indiantown Trail

Connecting NENA Places

What Is NENA?

- The Northeast Everglades Natural Area (NENA) is a collection of conservation lands (165,000 acres) as well as activity and education centers lying in northern Palm Beach County (PBC) and southern Martin County.
- NENA provides residents and visitors with a wide range of nature-based outdoor recreational opportunities.

Historic Jupiter-Indiantown Trail

- Located between Riverbend Park in Jupiter and the St. Lucie Canal in Indiantown.
- 16.5-mile multiuse trail.

Project Benefits

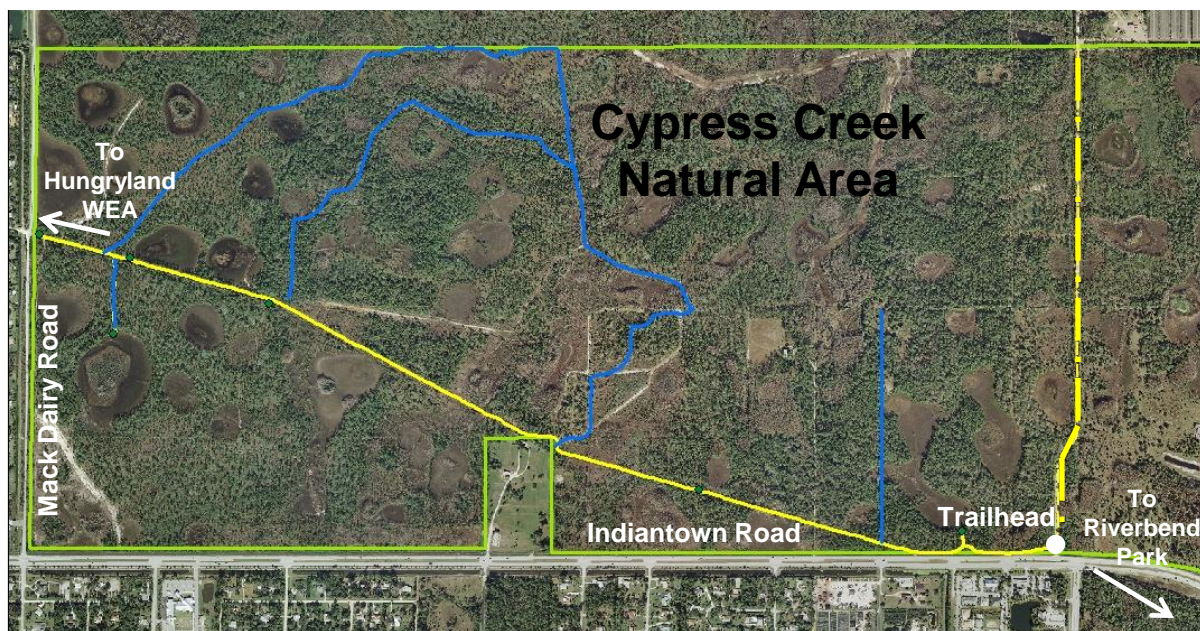
- Restores a historic connection between Jupiter in Palm Beach County and Indiantown in Martin County.
- Offers backcountry multi-user access to three conservation lands and visitor facilities: Riverbend Park, Cypress Creek Natural Area, and Hungryland Wildlife and Environmental Area (WEA)
- Preserves historic route for future interpretive trail rides.

Natural Areas Mobile Map



www.pbcgov.com/erm/natural/naturalareasmobilemaps.htm

Trail Map



- Historic Jupiter-Indiantown Trail (multiuse)
- Hiking Trail (pedestrian only)
- Jessup Trail (multiuse)
- Natural Area Boundary

Project Overview

- Historic Jupiter-Indiantown Trail is being built in phases along a 16.5 mile historic road used from the turn of the century to the late 1950s for travel between Jupiter and Indiantown. It is open to travel by foot, bicycle, and horseback.
- Each of the conservation lands accessed by this trail is subject to its own rules of use:
 - Riverbend Park www.pbcgov.com/parks/riverbend
 - Cypress Creek Natural Area www.pbcgov.com/erm/natural/natural-areas/cypress-creek/
 - Hungryland Wildlife & Environmental Area www.myfwc.com/viewing/recreation/wmas/lead/jones-hungryland/
- Construction of the trail from Cypress Creek Natural Area to Riverbend Park (Phase 2) is anticipated to begin in Fall 2013.

Phase 1 Trail Features Now Open

- 2 miles through Cypress Creek Natural Area
 - ✓ Trailhead/off-street parking at Indiantown Rd., chickee shade shelter, information board, & equestrian pitcher pump well.
 - ✓ Elevated, fully accessible trail surface composed of crushed rock. NOTE: Trail surface may not be suitable for thin-tired bicycles or unshod horses.
 - ✓ Way-finding signage and shade shelters.
 - ✓ Bike racks, horse hitches and mounting blocks at access points to hiking trails and wildlife observation platforms.
- 5 miles through Hungryland WEA
 - ✓ Trailhead/information kiosks/off-street parking off CR 711 at Gates 3 & 4 and Old Indiantown Road at Gate 9.
 - ✓ Trail surface is mostly elevated, packed dirt/grass. Some areas have exposed roots, loose gravel, or are subject to seasonal flooding.

Project Partners

Palm Beach County Departments of Environmental Resources Management and Parks and Recreation, South Indian River Water Control District, South Florida Water Management District, Florida Fish and Wildlife Conservation Commission, PB Metropolitan Planning Organization, Martin County, Florida Department of Transportation (Florida Stimulus Scenic Enhancement Program)



Palm Beach County Board of County Commissioners
 Department of Environmental Resources Management
 2300 North Jog Road - Fourth Floor, West Palm Beach, FL 33411
 Phone: 561-233-2400 www.pbcgov.com/erm/nena/