



**Palm Beach County**  
**Board of County Commissioners**  
**Engineering and Public Works Department**  
 2300 North Jog Road  
 West Palm Beach, FL 33411-2741

PRST STD  
 ECRWSS  
 US POSTAGE  
 PAID  
 PERMIT #685  
 WEST PALM BEACH, FL  
 EDDM

\*\*\*\*\* ECRWSSEDDM \*\*\*\*\*

TO: Residential and Business Customers

**NOTICE TO RESIDENTS AND BUSINESSES**

**WESTGATE CRA  
 SEMINOLE BOULEVARD  
 FROM OSWEGO AVE. TO OKEECHOBEE BLVD.  
 PEDESTRIAN LIGHTING & MULTI-USE TRAILS**

Palm Beach County is currently designing the Seminole Boulevard Pedestrian Lighting and Multi-Use Trails project. The project limits are from Oswego Avenue to Okeechobee Boulevard. The construction is anticipated to begin Spring of 2023.

The project includes adding a 12 foot multi-use trail on the west side of Seminole Boulevard and a 10 foot multi-use trail on the east side of Seminole Boulevard. Pedestrian lighting will be added along both trails.

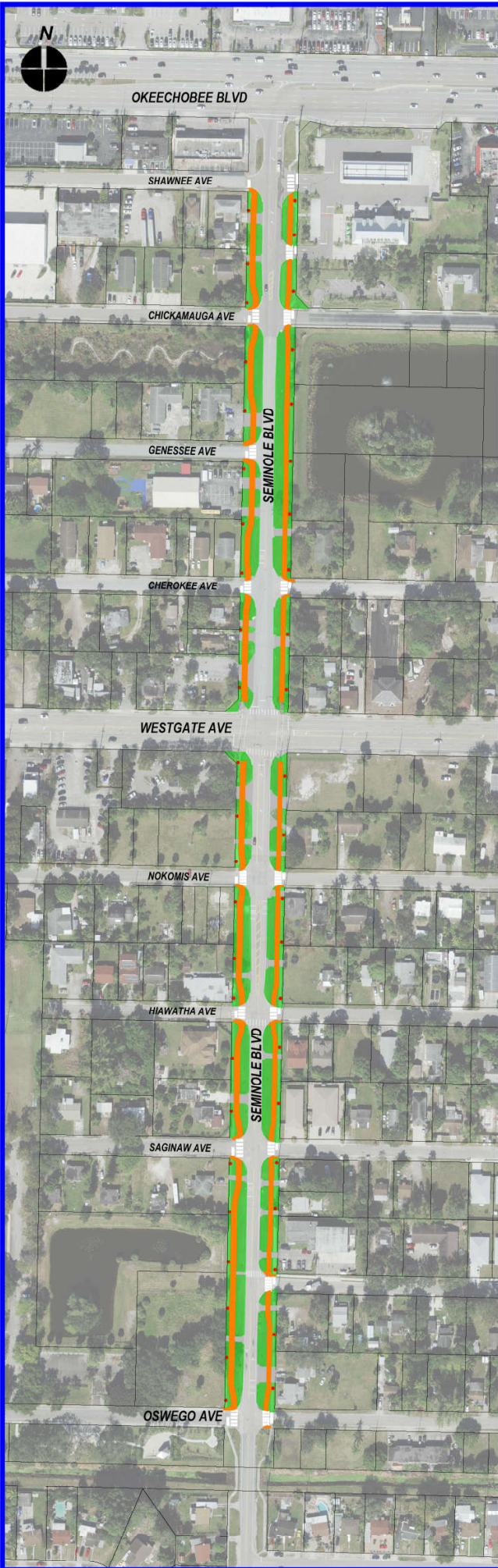
**Additional information is available for viewing  
 on the Roadway Production webpage at:  
[www.pbcgov.com/engineering/roadwayproduction](http://www.pbcgov.com/engineering/roadwayproduction)**



SCAN WITH SMARTPHONE









**Palm Beach County**  
**Board of County Commissioners**  
 Robert S. Weinroth, Mayor, Gregg K. Weiss, Vice Mayor  
 Maria G. Marino, Dave Kerner, Maria Sachs  
 Melissa McKinlay, Mack Bernard  
**County Administrator** Verdenia C. Baker