



Improper Disposal of Equestrian Waste

Cypress Grove Community Development District
August 24, 2016 Equestrian Waste Management Meeting

Why It's A Concern

- Water Quality

- Health issues related to contamination of surface water and ground water with bacteria, nutrients and toxic chemicals
 - Surface Waters (canals) are used for drainage, irrigation and potable water supply
 - Ground water is used for irrigation and potable water supply
- Clean Water Act Violations

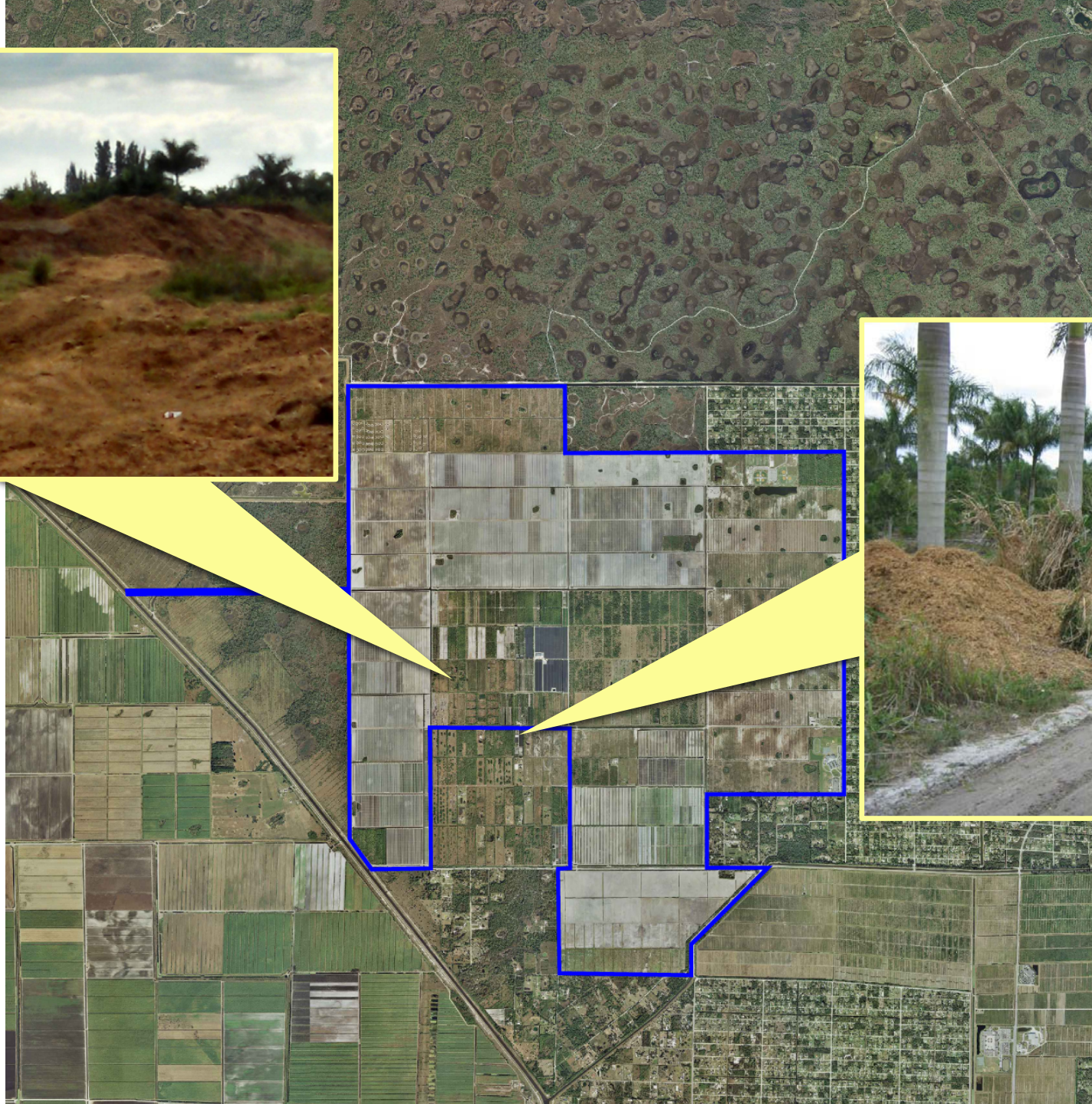
- Economic

- Lost revenue from contaminated crops
- Billions of dollars for surface water restoration



Specific Cases in CGCDD

- **May 2015:**
PBC Code Enforcement contacted 2 properties accepting equestrian waste material
- **Within one month:**
Code Enforcement issued notice to both property owners that were in violation of the County's Livestock Waste Ordinance, which requires setbacks and a Nutrient Management Plan
- **Fourteen months later:**
Both properties are in compliance



Equestrian Waste is a Growing Problem

- It is estimated that yearly 230,000 tons (17,000 dump trucks) of equestrian waste is generated in PBC
- That equates to 218 metric tons(mt) of phosphorus
- STA 1E (5,000 acres) treats 20 mt.
- Treating 218 mt of phosphorous would require 55,000 acres
- FDEP estimates that the cost to meet the state's surface water quality standards for phosphorus is \$25.7 million per 1 mt, or \$5.6 billion for 218 mt
- Pay me now or pay me later

Improper Disposal is a Growing Problem

- There is a need for ...
 - more public education, awareness and timely enforcement before the water quality problem escalates
 - more approved disposal sites
 - cooperation amongst all governmental and inter-governmental agencies
- There are technologies that will remove not only the waste from our environment, but also the phosphorus